

Optical module and SPF slot





Overview

Note that the QSFP/QSFP+/QSFP28/QSFP56 are designed to be electrically backward compatible with SFP/SFP+/SFP28 or SFP56 respectively.

Overview Small Form-factor Pluggable (SFP) is a compact, network interface module format used for both and applications. SFP transceivers are available with a variety of transmitter and receiver specifications, allowing users to select the appropriate transceiver for each link to provide the required optical or electrical reach over.



Optical module and SPF slot

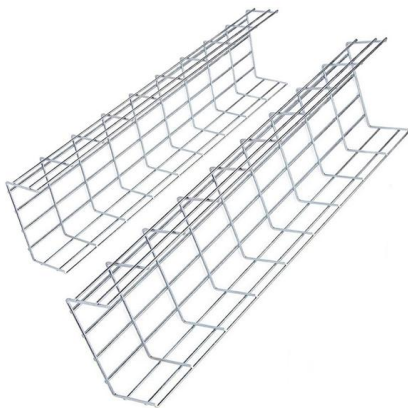


What is SFP Module? An Ultimate Guide (2024)

An SFP module is a small, pluggable optical transceiver that fits into the SFP port of a networking switch or other device. Sometimes, it is known as

The Ultimate Guide to SFP Modules (2026): Types,

Confused by SFP vs SFP+? Read the definitive 2026 guide on SFP modules. We explain Single Mode vs Multimode, DDM diagnostics, and how to choose the right

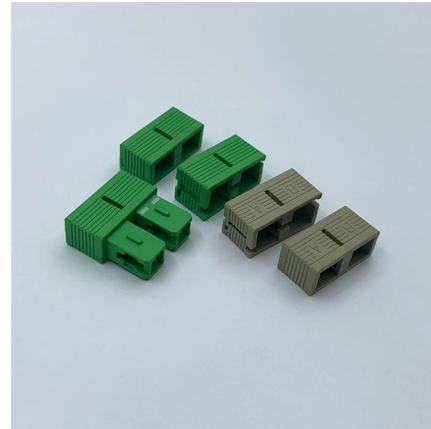


What is SFP+ Module? An Ultimate Guide (2024)

The SFP+ module is also called the SFP+ transceiver, SFP+ optical module, SFP+ optics, or SFP+ fiber transceiver. Although they have several

What is SFP: SFP Meaning, SFP Types, SFP Port

SFP fiber module is used to complete the electrical-optical/optical-electrical conversion of optical signals. Specifically, the SFP fiber module was inserted in



What Is an SFP Module? Complete Guide

SFP modules, or Small Form-factor Pluggable modules, are essentially the workhorses of modern networking. They facilitate data



optical transceiver sfp+ 10g single mode module 1310nm 10km lc

Upgrade networks with our optical transceiver sfp+ 10g single mode module 1310nm 10km lc. This LC transceiver delivers effortless 10km connectivity for data centers and servers.



Application Of 8G SFP+ FC Optical Module In SAN

Because the SAN network uses optical fiber transmission, it can realize long-distance device interconnection. At this time, we can select the corresponding





SFP vs SFP+ vs SFP28 vs QSFP+ vs QSFP28

To explore the compatibility between SFP and SFP+, SFP28 and SFP+, as well as QSFP28 and QSFP+, check out this post for detailed insights.



What is an SFP (Small Form Factor Pluggable) Port?

An SFP port is a slot on a network device or computer into which small form-factor pluggable (SFP) transceivers are inserted. An SFP transceiver,

What is an SFP Module? An Ultimate Guide , SFP

What is an SFP Module? Small Form-factor Pluggable (SFP) module is a compact, hot-swappable transceiver used for both telecommunication and



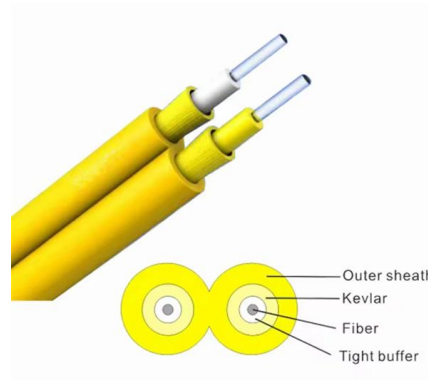
Unlocking Hyperscale Potential: The Strategic Evolution of 800G

Discover the details of Unlocking Hyperscale Potential: The Strategic Evolution of 800G QSFP-DD DR8 Optical Interconnects at LonRise Equipment Co. Ltd., a leading supplier in China for



SFP Modules SFP and SFP+ Modules Small Form-Factor

Features Industrial standard small form-factor pluggable (SFP) package Wide specifications and fiber types available Provides digital diagnostics monitoring (DDM) functionality



SFP vs. SFP+ Modules: Key Differences and How to

SFP modules, integral to fiber optic communication systems, are compact optical devices that house both laser and photodiode semiconductors.

Custom 1.25G -T RJ45 SFP MODULE , Copper SFP Module

????????? ?????????? When bridging modern optical switches to legacy copper-based servers, generic copper transceivers often face auto-negotiation failures or hardware rejection. The Wolon



What is a SFP Module and How to Choose The Right

What is a SFP Module? A SFP (Small Form-Factor Pluggable) module is a compact, hot swappable transceiver used in networking to connect devices like switches,



SFP vs RJ45 Module: 5 Advantages & Best Use Cases

Compare SFP vs RJ45 modules for Ethernet. Learn 5 key advantages, power/cost tradeoffs, and best use cases to choose the right option.



SFP vs SFP+: A Complete Guide to Compatibility and

Explore the ultimate guide to SFP vs SFP+ compatibility, covering interoperability and backward compatibility of SFP+ modules for seamless high

The Big Differences Between SFP, SFP+, SFP28,

Delve deep into the world of optical modules. From SFP to the latest QSFP-DD, explore their differences, applications, and what to consider for your



QSFPTEK Gigabit Ethernet Media Converter with SFP Module,

About This 1x Multimode Dual LC fiber Optical Port: 1.25Gbps, 850nm wavelength, support Gigabit Ethernet; 1x RJ45 Port: 10M/100M/1000M, supports Full/Half Duplex auto-negotiation and MDI/MDIX



How to interconnect the Gigabit RJ45 port with the SFP

It needs to be connected to an optical module first, and then it can be transmitted with an optical fiber patch cord. The RJ45 port is for copper cable



Installing Optical Module Tutorial For HUAWEI Switch

Module installation is an important factor affecting the service life of switches and modules. In the installation process, be sure to follow the installation steps

Fiber Optic Only SFP-1G-SX Compatible 1000BASE-SX SFP 850nm

For 1 Gb/s LC duplex optical links on multimode fiber Meets 1000BASE-SX (850 nm, up to 550 m) specifications with DOM/DDR support Compatible with 1 Gb/s Ethernet ports using the SFP form



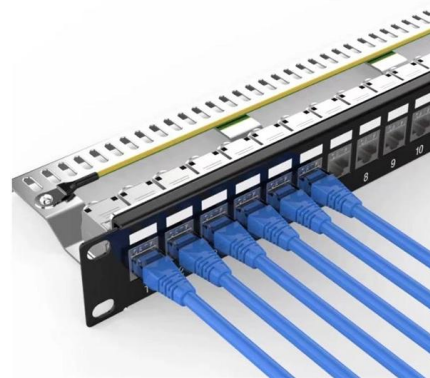
Troubleshooting Tip: SFP/SFP+ transceivers port/fiber link is not

Check whether SFP or SFP+ transceivers are used, and slots for SFP and SFP+ modules look exactly the same. Additionally, run the below commands to check the transceiver's status. get



What Is an SFP Module? -- Complete Guide to SFP, SFP+ & SFP28

For optical modules, the SFP contains a TOSA (Transmit Optical Subassembly) and ROSA (Receive Optical Subassembly) to handle the fiber signal. For copper SFP modules (RJ-45), the module

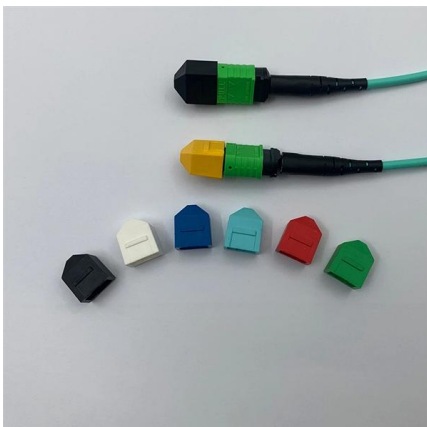
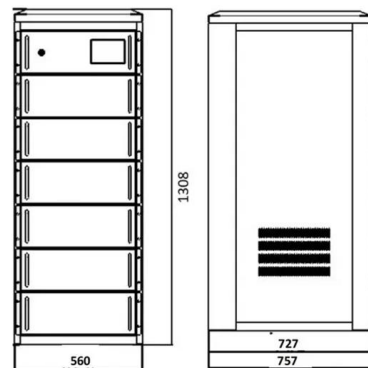


How to Install and Remove Optical Modules Safely

Install optical modules safely with ESD protection, proper handling, and dust control. Follow these steps to avoid damage and ensure network reliability.

SFP vs SFP+ vs SFP28 vs QSFP+ vs QSFP28 vs

These compact and easily interchangeable modules serve as interfaces between devices like network switches and routers, converting both



Transceivers Explained: SFP vs SFP+ vs SFP28 vs QSFP+ vs QSFP28

In this guide, we break down the differences between these modules and help you make the best decision for your infrastructure--whether you're upgrading a legacy system, increasing the



Contact Us

For datasheets, pricing, or custom high-speed optical interconnect solutions, please visit:

<https://www.syropy.com.pl>