

# Optical module LOS error





## Overview

---

RX LOS (Receiver Loss of Signal) indicates the module's receiver (RX) is not detecting sufficient optical power to establish a valid link. When TX Fault is asserted (usually "HIGH"), it means the transmitter cannot operate within its normal specifications. During the deployment of the OSN 6800, the SLQ4 board of the OSN 3500 interconnected with the TOM board reports an R\_LOS alarm. LOS Alarm = Missing signal on opposite end! Quickly enter the interface view [for example interface GigabitEthernet 0/0/1], Hit display this. Upon inserting the transceiver, the device displays errors such as "Not Supported," "Unknown,". The article Digital Diagnostic Function (DDM) For Optical Modules describes that DDM function can be used for real-time monitoring and fault location of the module's working status, in which the optical module's transmitting optical power and receiving optical power are the key parameters for.



## Optical module LOS error

---



### What Is LOS in a Wi-Fi Router? Why It's Blinking and

What Does LOS Mean in Wi-Fi? LOS stands for Loss of Signal. When this light appears on your fiber router or ONU (Optical Network Unit), it indicates

### OFC 2026 Heralds Optical Shift for AI Factories

This week's OFC conference in Los Angeles offers a potential watershed moment for optical networking, as vendors unveil a raft of new technologies designed to improve the power



### Optical Transceiver Failure: How to solve it?

This article summarizes two common issues with optical modules and the corresponding solutions during the use of optical transceiver.

### Troubleshooting and Repairing Optical Transceiver Failures in

SFP or SFP+ optical transceiver failure can happen in multiple recognizable ways. The most notable fault is the "module not detected" error, which describes a situation in which a switch



### Troubleshooting Your Optical Transceiver: A

Optical transceivers play a crucial role in modern data communication networks, enabling the transmission and reception of optical signals across fiber

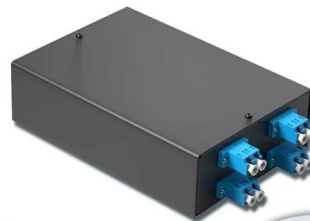


### Optical Transceiver Failure: How to solve it?

Optical transceivers must be in anti-static packaging during transportation and transfer before use, and must not be removed or placed at will.

4-port 8-core LC wall-mounted fiber terminal box (empty frame)

Surface painted    Scientific plate fiber    Cold-rolled steel plate



Lifetime quality assurance

Free shipping

Customizable for telecommunications

### WO2023098466A1

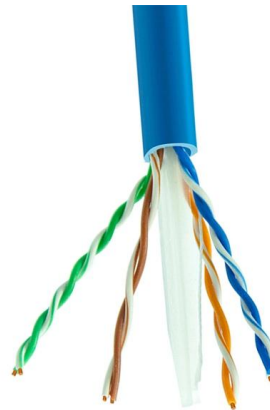
The present application provides an optical module and a LOS optimization method for the optical module.



### Solved: FTTP



This is displaying a solid red LOS light - which I understand to stand for Loss of Service. The FTTP installers never mentioned what to do should an issue arise.

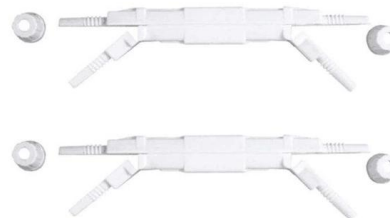


### Common Optical Transceiver Failures and Effective Troubleshooting

Discover the most frequent optical transceiver failures and learn how to diagnose, test, and solve them using proven techniques. Includes expert insights and testing methods for fiber optic

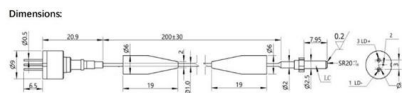
### The SDH Board Interconnected with the TOM Board Reports an

If no services are configured, the optical board does not report an R\_LOF alarm but reports an R\_LOS alarm when it receives an all-0s or all-1s signal. To solve this problem, configure services for the



### OFC 2025: Interoperability demos Martin Rowe OFC

Indeed, 1.6T (Tb/sec) products -- optical modules -- were all over the exhibit hall although not yet in deployment and not demonstrated by these two





## Optical link instability leads to 10G XFP optical module tx fault alarm

1. TxFault optical module status is automatically detected by the XFP module inside and send it out via pin NR (NOT READY), software is responsible for the results of the display module

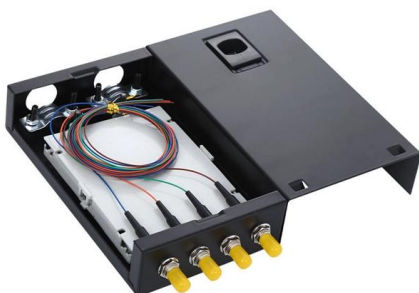
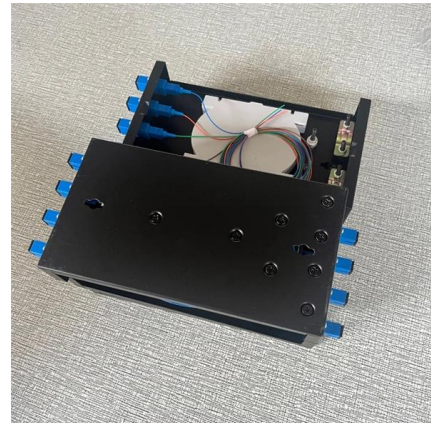


## 16 Tips to Troubleshoot Your Optical Transceiver Issues

Optical transceivers are delicate devices and need to be handled with care. Following the tips above can avoid many common problems and ensure

## Diagnosing and Solving Common Optical Transceiver Failures

In this article, we discuss the main reasons and solutions for optical transceiver connection failures, which may help you with diagnosing common module issues.



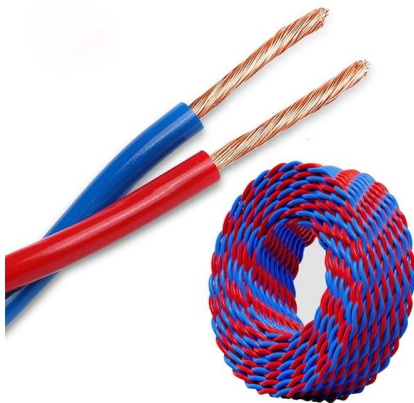
## Optical module common faults and solutions

In this article, we will focus on teaching you how to troubleshoot and solve the common three categories of optical module failure. First, the transmission class of the optical module fault

## What are the most common fiber optics problems?



Fiber optic communication uses pulses of light to transmit data along thin strands of glass or plastic. Because the technology is reliable and supports

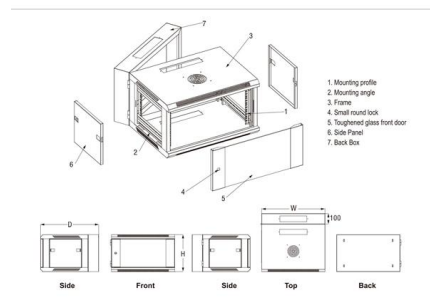


### Why is the LOS light red on my ONT or router?

If the LOS (Loss of Signal) light on your ONT (Optical Network Terminal) or router is red or blinking, it means your device is not receiving a stable fiber signal from Mahek Broadband's network. This is

### Displaying Optical Module Information

When certifying an optical module, Huawei comprehensively verifies the functions of the optical module to ensure the optical module quality. The functions include the installation and removal, transmit and



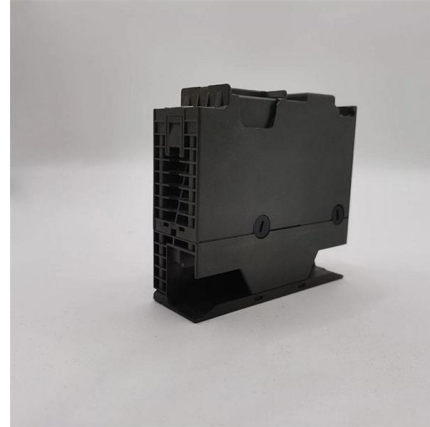
### WO2023098466A1

The present application provides an optical module and a LOS optimization method for the optical module. The optical module comprises: a photodetector, used for converting an optical signal into an



## Troubleshooting Guide for Cisco NCS 1010, IOS XR Releases 7.9.x

The INGRESS-AMPLI-GAIN-LOW alarm is raised when the Ingress EDFA module cannot reach the gain setpoint. This condition occurs if the amplifier reaches its range boundaries.



### Analyzing Abnormal Situations During Installation and Use of Optical

As core components of optical communication systems, the proper installation and use of optical modules directly impacts network stability. This article systematically identifies common

### Optical Module: Typical Optical Module Troubleshooting Procedure

If it is not a Huawei-certified optical module, replace it with a Huawei-certified optical module. If the optical module is installed on a GE port, run the display interface GigabitEthernet x/x/x command to



### ASR9000/XR optic related errors explained

Clocking issue inside Optics). Try replacing Optics. RX\_LOS - Optics is seeing receive Loss-of-Signal (will cause LASI and HW\_LINK Defects). Check fiber XCVR\_SECURITY - Not a



## Summary of common problems in the use of optical modules

First, what are the common problems in the use of optical modules? 1, the causes of compatibility problems: A. Errors in the process of compatibility code import; B, the software update



## How to Diagnose Optical Module Failures

Learn to diagnose optical module failures with 2 critical commands. Fix LOS alarms, interpret TX/RX power thresholds, prevent signal loss or module damage. Professional tips from

## What Are TX Fault and RX LOS in Optical Transceivers?

Discover how TX Fault and RX LOS affect optical transceivers. This guide explains their functions, common triggers, and practical troubleshooting steps.



## Optical Module Common Failure Of Optical Power

When the transmit optical power exceeds the nominal working range, it may cause the optical module to work abnormally, thus affecting the network data



## Contact Us

---

For datasheets, pricing, or custom high-speed optical interconnect solutions, please visit:

<https://www.syropy.com.pl>