

Optical Module Power Accuracy





Optical Module Power Accuracy

Product Catalog



Minimum Receiver Power vs. Receiver Sensitivity: A

Learn the key differences between Minimum Receiver Power and Receiver Sensitivity in optical modules. Discover why using Minimum Receiver

The need for current sensing in optical modules for 100G and beyond

In this post, I'll discuss various current-sensing functions in high-bandwidth data communication applications for pluggable optical modules.



Design of Fiber-Longitudinal Optical Power Monitor

This paper presents analytical results on the accuracy of fiber-longitudinal optical power monitoring (LPM) at arbitrary positions. To quantify the accuracy, the position-wise variance and power-profile

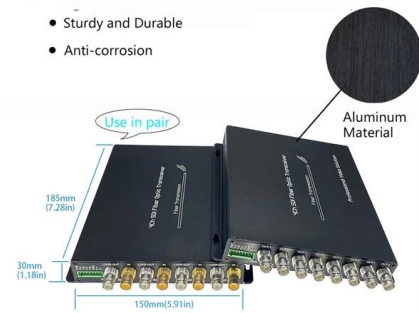
Smallest Thinnest Power Modules for Data Center Optical Modules

Renesas's Smallest Thinnest Modules for Optical modules Renesas proudly offers RAA210040 and RAA210030 power modules that are compact, synchronous step-down, non-isolated complete power

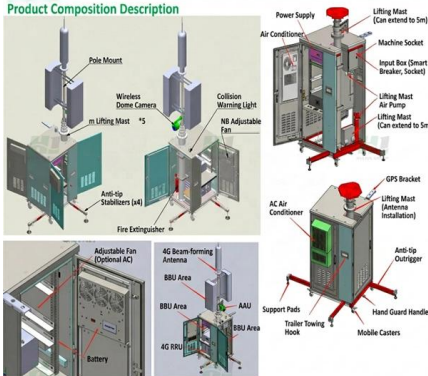


High Quality Aluminum Housing with Compact Size

- Sturdy and Durable
- Anti-corrosion



Product Composition Description



A method for detecting the accuracy of optical measurement module

Abstract: In order to test the accuracy of an optical measurement module, from the perspective of practicability, this paper uses photoelectric theodolite and mirror to build an autocollimation optical

Techniques for Higher Accuracy Optical Measurements

Figure 12 shows the available data rates and typical power range for each of the modules, tabulated based on an extinction ratio greater than 10dB. The average optical power is the power level at



Understanding Optical Modules: Working Principles,

Explore the working principles, structures, and performance metrics of optical modules, essential components of optical fiber communication systems. Learn





Digital Diagnostic Monitoring (DDM) in Optical Modules:

Digital Diagnostic Monitoring (DDM), also known as Digital Optical Monitoring (DOM), is a key feature in modern optical transceivers. It allows real



Design of Fiber-Longitudinal Optical Power Monitor

Abstract--This paper presents analytical results on the accuracy of fiber-longitudinal optical power monitoring (LPM) at arbitrary positions. To quantify the accuracy, the position-wise variance and

Google's High-Speed Interconnect Architecture to Push

Google's next-generation TPU, Ironwood, integrates a 3D Torus network topology with the Apollo optical circuit switch (OCS) all-optical network,



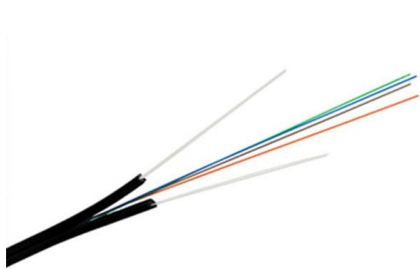
The key points for optimizing the performance of optical

The key performance metrics that affect the performance of optical modules include average transmit optical power, extinction ratio, optical signal



Optical Power Meters: Understand Their Uses and

Optical power meters are indispensable instruments for testing and maintaining modern fiber optic communication and other systems. Learn all about



Optical Module Performance: Key Power and Sensitivity Metrics

In modern optical communication systems, optical modules serve as the core photoelectric conversion components whose performance metrics directly impact the efficiency and

The need for current sensing in optical modules for 100G and beyond

In this post, I'll discuss various current-sensing functions in high-bandwidth data communication applications for pluggable optical modules. These pluggable modules remain relatively the same size



Test Specification for 800 Gbit/s PAM4 Optical Module at 100 Gbit/s

The specification is designed for 800 Gbit/s PAM4 optical modules operating at 100 Gbit/s per lane, detailing test procedures for optical and electrical interfaces, power consumption, and both



What Are the Key Parameters of Optical Modules

Understand the key parameters of optical modules, including transmission rate, distance, wavelength, and fiber compatibility, for better network

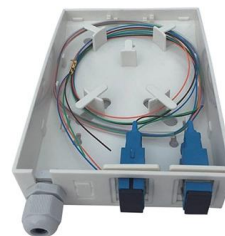


How to Test Transmitted Power of Optical Modules

Test transmitted power of optical modules using an optical power meter or DOM to ensure signal strength, network reliability, and compliance with

Designing a Module for High-Speed Optical

This article explores MPS optical module solutions to meet the design requirements of high-speed optical communication as well as different laser diode applications.



- Full Customization Support
- Free Design & Fast Sample Service
- Eco-friendly & Certified Materials
- Strict Quality Control

SGS CE ISO 9001:2015
BSCI GCC

Optical Module Performance: Key Power and Sensitivity Metrics

This article provides an in-depth analysis of two key performance indicators of optical modules: transmitter power and receiver sensitivity.



How to Understand the Performance Parameters of Optical Modules

The performance parameters of optical modules are important indicators for evaluating their performance. Parameters such as transmission rate, wavelength, numerical aperture, output



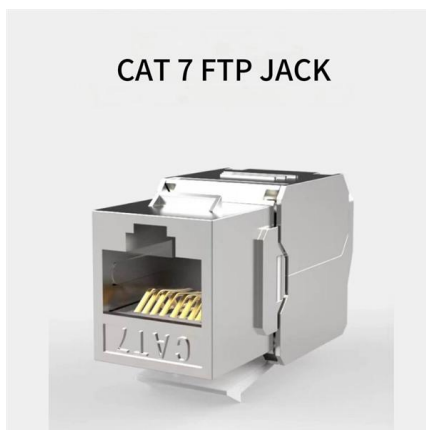
LASER TREE Laser Engraver Module, 10W (10000mW)

LASER TREE Laser Engraver Module, 10W (10000mW) Optical Power Laser Engraver Module w/Air Assist, Built-in FAC, Double Ultra-Fine



MPM38222 - A Simple, Compact Power Solution for Optical Modules

This article introduces the MPM38222, a high-performance, 6V input, dual 2A power module, which is suitable for optical modules and other space-limited applications. The total solution for a dual 2A



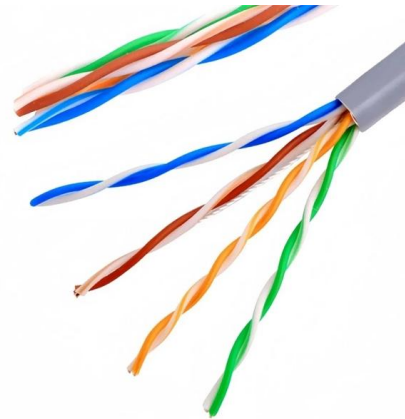
Wide Dynamic Range Optical Power Monitor

These optical power monitors are particularly useful for the linear measurement and monitoring of optical power. The fast response time at high signal-noise-ratio makes the OPM400 series particularly useful



The Most Comprehensive Guide Of Optical Modules

Explore the ultimate guide to optical modules. Learn types, functions, performance metrics & how to choose the right module for your fiber network.

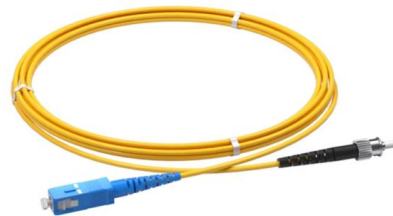


Buck-Boost Converters Solving Power Challenges in Optical Modules

This application note gives a short introduction to optical modules and the need of an optimized power tree in them and then concentrates on the use cases and benefits of four-switch and inverting buck

Laser Engraver Module, 5000Mw Optical Power, 450Nm Wavelength

Laser Engraver Module, 5000Mw Optical Power, 450Nm Wavelength for Cubiko, 3018-PRO & 3018-Prover, 3018-Prover V2, 3020-PRO MAX, 3020-PRO MAX V2 CNC Machines. Laser



Contact Us

For datasheets, pricing, or custom high-speed optical interconnect solutions, please visit:
<https://www.syropy.com.pl>