

Optical Module Parameter Settings



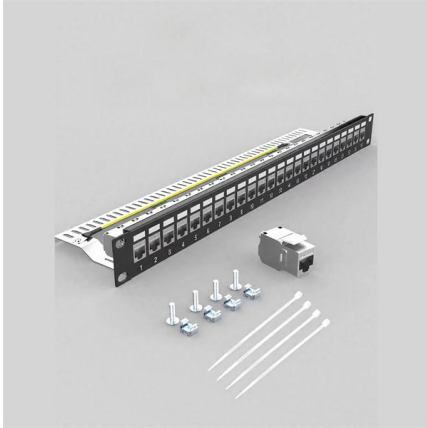


Overview

If you know the model or type of an optical module, you can view the section "Pluggable Modules for Interfaces" in the Hardware Description to look up parameters of the optical module, including the center wavelength, transmission distance, fiber types supported, receive optical. This chapter describes how to configure the Optical Amplifier Module and Protection Switching Module (PSM). If one of the five parameters is abnormal, ONU registration will be abnormal or packet nt are all for the PON port. Optical modules are crucial for today's communication systems as they convert electrical signals into light signals for rapid data transfer. Commonly used wavelengths include 850nm, 1310nm, and 1550nm, as well as the CWDM wavelengths ranging from 1270nm to 1610nm.



Optical Module Parameter Settings

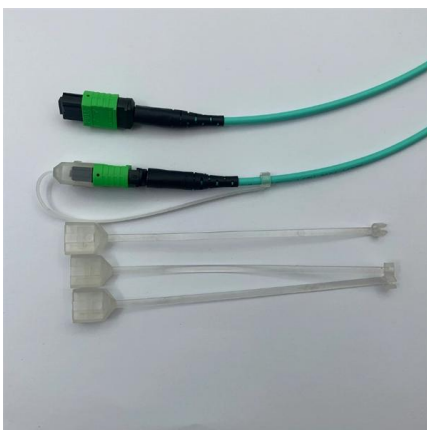


Explanation of Optical Module Parameters

The core technical parameters of optical modules include: transmission rate, encapsulation, transmit optical power, receive sensitivity, transmission distance, center wavelength,

Optical Flow , PX4 Guide (main)

The image below shows an optical flow setup with a separate flow sensor (PX4Flow) and distance sensor (Lidar-Lite): Setup An Optical Flow setup requires a



What are the detailed parameters of the optical module

What are the detailed parameters of the optical module? Optical module center wavelength, transmission distance, loss and dispersion, laser type, fiber interface, etc. Let's take a

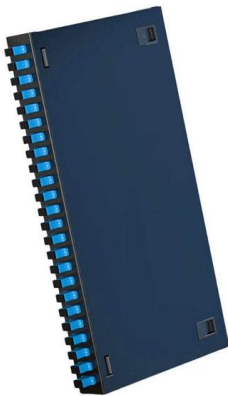
Optical-Module Parameter Inquiry and Alarm Configuration

Browses all parameters of optical module including the transmitting optical power, the reception optical power, the temperature, the power-supply voltage and the bias current. Note: The transmitting optical



Looking for Optical Transceiver Modules? 8 Essential

When buying optical transceiver modules, there are several parameters to consider to ensure compatibility and optimal performance. Here



How to View Optical Module Parameters

Using a Command If an optical module is installed in a running router, you can run the display transceiver command to view parameters of the optical module, including the center wavelength,



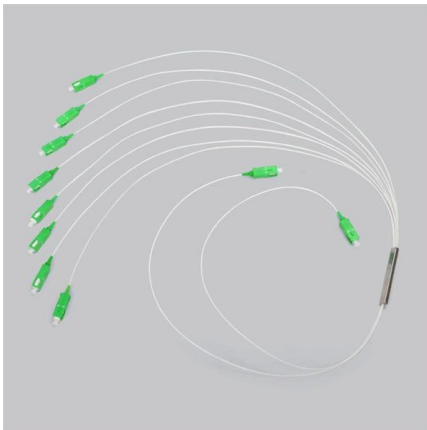
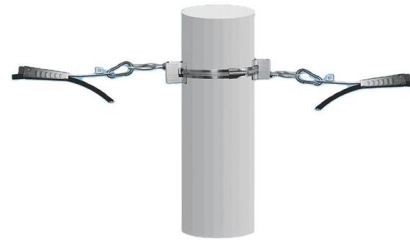
How to View Optical Module Parameters

If an optical module is installed in a running device, you can run the display transceiver command to view parameters of the optical module, including the center wavelength, transmission



Optical-Module Parameter Inquiry and Alarm Configuration

The parameters of optical module include the light transmission power, the light reception power, the temperature, the power-supply voltage and the bias current.



How to View Optical Module Parameters

Using a Command If an optical module is installed in a running router, you can run the display transceiver command to view parameters of the optical module, including the center

Optical-Module Parameter In

1.4.2 Example of Setting the OLT Optical-Module Alarm The following example shows how to enable the light transmission power alarm on port e0/1, set the minimum and maximum values, and clear the



Interface and Hardware Component Configuration Guide for Cisco

Instructions for configuring controllers, managing optical modules, and monitoring coherent optical transceiver parameters.



Configure Optical Modules

This chapter describes how to configure the Optical Amplifier Module and Protection Switching Module (PSM). When you plan to replace a configured optical module with a different type of optical module,



What are the optical module parameters?

The optical module realizes the conversion of photoelectric signals in an optical communication network and is one of the main components of optical

Laser Settings , Fiber Laser Engraver Parameters , OMG Laser

Complete fiber laser settings for tumblers, coins, stainless, brass, aluminum, guns & jewelry. JPT/Raycus/MOPA, Ezcad & LightBurn parameters by OMG Laser.



From standard 1U to 8U sizes to fully customized Non-standard enclosures.

Everything You Need to Know About Optical Modules

Upgrading optical modules involves replacing the module with a higher-capacity module or adding modules to the communication system. Care should





Parameter setting of optical fiber laser cutting machine

The parameters of optical fiber laser cutting machine include cutting speed, power, gas cutting, etc. Laser cutting analyzes the cutting quality and cutting efficiency respectively, and



What Is an SFP Module? Complete Guide

SFP modules, or Small Form-factor Pluggable modules, are essentially the workhorses of modern networking. They facilitate data

What Are the Key Parameters of Optical Modules

Understand the key parameters of optical modules, including transmission rate, distance, wavelength, and fiber compatibility, for better network



Checking Parameter Settings of the Optical Modules

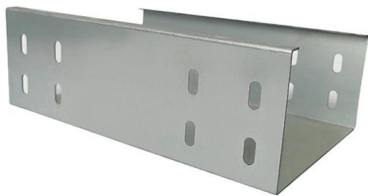
Check the parameter settings such as rate, wavelength, and transmission distance of the interconnected optical modules. Using the optical modules from the same vendor is recommended.



Optical-Module Parameter In

1.1 Introduction of Optical Module's Parameters

The parameters of optical module include the light transmission power, the light reception power, the temperature, the power-supply voltage and the

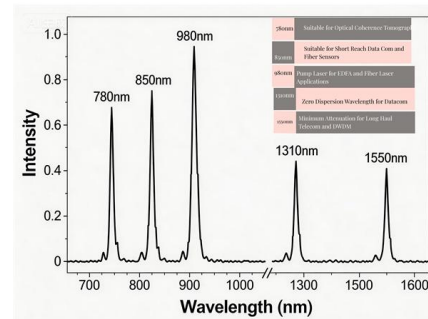


Configuration Guide for Cisco NCS 1001, IOS XR

When you plan to replace a configured optical module with a different type of optical module, you must clear the configurations of the old module before

Looking for Optical Transceiver Modules? 8 Essential

These modules convert electrical signals into optical signals for transmission and then convert received optical signals back into electrical signals.



What Is an Optical Module and Its FAQs (V200)

What Is an Optical Module and Its FAQs (V200) Describes what an optical module is and FAQs, including the fundamentals, appearance and structure, key performance counters, common types,



Checking the Working Modes

Procedure Run the display transceiver interface interface-type interface-number verbose command to view the optical module parameter settings. All the parameters of each optical module

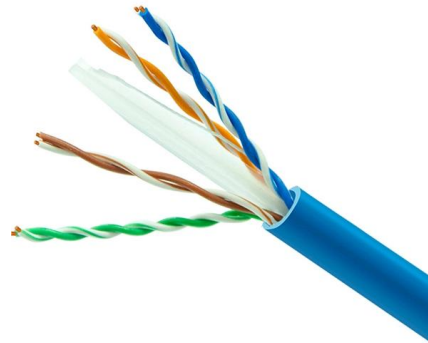


Configure OTDR Module

Configure OTDR Module This chapter describes how to configure the Optical Time Domain Reflectometer (OTDR) module. Note When you plan to replace a configured optical module with a

Wave Optics Software for Analyzing Micro

Simulate and optimize optical devices by combining the COMSOL Multiphysics® software and the add-on Wave Optics Module. Learn more here.



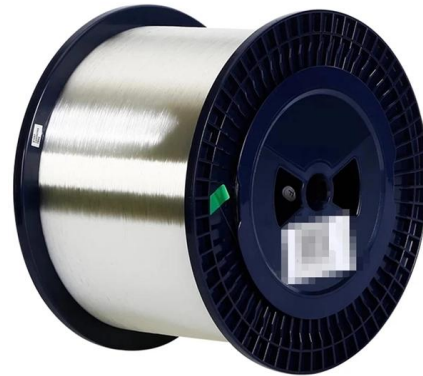
The key points for optimizing the performance of optical

This article discusses the performance metrics for optical modules and how to achieve higher transmission speeds for optical modules.



Configure Optical Modules

Configure Optical Modules This chapter describes how to configure the Optical Amplifier Module and Protection Switching Module (PSM). Note When you plan to replace a configured optical module with



Understanding Optical Modules: Working Principles,

Explore the working principles, structures, and performance metrics of optical modules, essential components of optical fiber communication systems. Learn

Contact Us

For datasheets, pricing, or custom high-speed optical interconnect solutions, please visit:

<https://www.syropy.com.pl>