

Optical Module Configuration and Wavelength Selection





Optical Module Configuration and Wavelength Selection

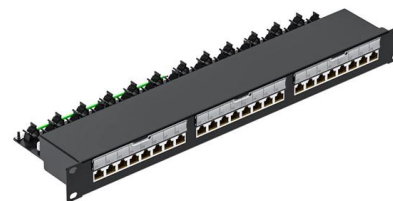


A Guide to Selecting Optical Transceivers for DWDM

This article help you to master optical transceivers selection for DWDM multiplexer and demultiplexer with a focus on wavelengths and transmission

Optical Design of a Wavelength Selective Switch

This work proposes a new hybrid WSS architecture that leverages the beam shaping and steering features of uniform silicon nitride-based end-fire



Configuring the Center Wavelength of a WDM Optical Module

The system has 80 channels, each corresponding to a wavelength and frequency. You can set the center wavelength of a WDM optical module by setting the channel ID, frequency, or wavelength.

The Most Comprehensive Guide Of Optical Modules

Explore the ultimate guide to optical modules. Learn types, functions, performance metrics & how to choose the right module for your fiber network.



Exploring the Correlation Between Optical Module Wavelength and

This article delves into the correlation between optical module wavelength and transmission distance, shedding light on the complexities that impact the efficiency of data transmission.



How to Choose Optical Transceiver Modules

Before buying optical modules, you should first understand the network environment and use requirements. For example, optical transceiver



Wavelength Selective Switch (WSS) Modules

Wavelength Selective Switches (WSS) provide agility in optical networks via their ability to reconfigure traffic and enable bandwidth sharing at the optical layer.





A Brief Introduction to Wavelength Selective Switch

By incorporating WSS modules, they gain the ability to selectively manage specific wavelengths of light, improving signal reconfiguration and

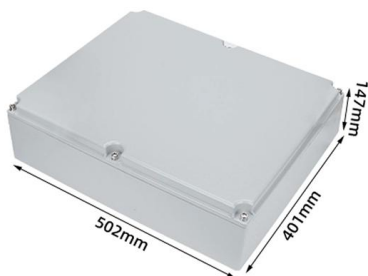


SR SFP Module: Specs, Compatibility, and Selection Guide

This guide explains SR SFP modules, including wavelength, fiber requirements, typical reach, compatibility issues, and selection tips for short-range optical networking.

Overview of Common Wavelength Selective Switch (WSS) Module

MEMS-based WSS modules utilize micro-electro-mechanical systems with a micromirror array to achieve wavelength selection. Input light is dispersed into different wavelengths by a grating,



What Are the Key Parameters of Optical Modules

Understand the key parameters of optical modules, including transmission rate, distance, wavelength, and fiber compatibility, for better network



Automated optical monitoring wavelength selection for thin-film filters

In this paper we study the wavelength selection process for optical monitoring of thin film filters. We first discuss the technical limitations of monitoring systems as well as the criteria defining the sensitivity of



SFP Wavelength Guide: 850nm vs. 1310nm vs. 1550nm

SFP wavelength refers to the nominal center wavelength of the laser transmitter inside a Small Form-factor Pluggable (SFP) optical transceiver. It

Understanding Optical Modules: Working Principles,

Explore the working principles, structures, and performance metrics of optical modules, essential components of optical fiber communication systems. Learn



Wavelength Selective Switch (WSS) in Fiber Optics

Learn about Wavelength Selective Switches (WSS) used in fiber optic networks, including their functions in wavelength switching and optical power control for



Understanding and Selecting Optical Fibre and Cable

OPTICAL FIBRE AND CABLE This document will provide an understanding of optical fibre, optical fibre cable (OFC), application standards, and key considerations that one should make before selecting

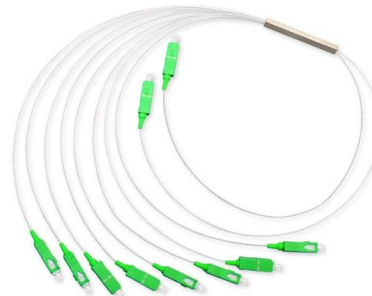


Understanding Optical Transceiver Modules: A Comprehensive Guide

In the world of fiber optic communications, optical transceiver modules play a pivotal role as interfaces that convert electrical signals to optical signals and vice versa.

ROADM and Wavelength Selective Switches

This configuration verifies the ability of the WSS to completely remove a channel and ensures minimal residual signal is present when or if the wavelength is added back into the system at a later node.



ROADM and Wavelength Selective Switches

ROADM and Wavelength Selective Switches Perspectives for Fiber Optic Manufacturing Test Engineering With almost all new system deployments leveraging ROADM-based AON networks,



How to Choose the Right Optical Transceiver Module

Learn how to select the ideal optical transceiver module based on speed, fiber type, compatibility, and real deployment scenarios. Includes expert recommendations and trusted Cisco



Fundamentals and Design Guides for Optical Waveguides

guides of optical waveguides, including state-of-the-art and challenges, fundamental theory and design methodology, fabrication techniques, as well as materials selection for different level waveguide

Wavelength selective switching

Wavelength selective switching components are used in WDM optical communications networks to route (switch) signals between optical fibres on a per-wavelength basis.



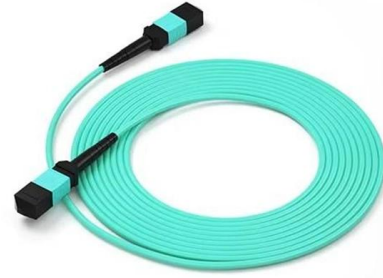
7.3: Wavelength Selectors

In this section devices and optical elements used to select a band of wavelengths from a broadband or multi-line optical source are described. These devices and



Understanding Wavelength Selective Switches for ROADMs

These modules let you independently switch each wavelength of a DWDM signal to various output ports. This feature



A Brief Introduction to Wavelength Selective Switch

Explore the Wavelength Selective Switches (WSS) in Reconfigurable Optical Add-Drop Multiplexers (ROADMs). This brief introduction covers WSS

Contact Us

For datasheets, pricing, or custom high-speed optical interconnect solutions, please visit:
<https://www.syropy.com.pl>