

Optical Flow Module Return Values





Optical Flow Module Return Values



Estimating optical flow: A comprehensive review of the state of the art

Notably, the state-of-the-art performance achieved by VideoFlows (Shi et al., 2023) is attributed to its utilization of a TRi-frame Optical Flow module (TROF), a technique that jointly

Key Parameters Interpretation of Optical Modules

The optical module works at the physical layer of the OSI model and is an important part of optical fiber communication. Its main function is to realize the photoelectric

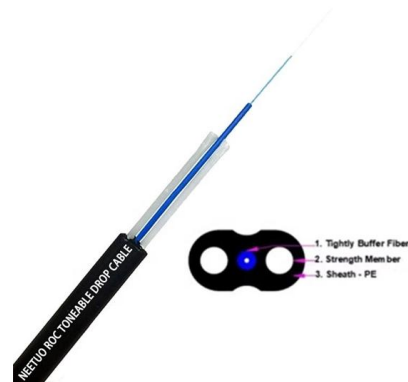


What Is ORL in Fiber Optics? A Guide to Optical Return Loss

ORL Thresholds and What They Mean Optical Return Loss (ORL) is a critical metric in fiber optics network, directly influencing signal

Reflectance and Optical Return Loss (ORL) Measurement and Testing

Optical return loss is given in units of dB and always a negative value for passive optics, with values closer to 0 representing larger reflections (poorer connections). Return loss for the entire fiber under



OpenCV

Optical flow is known as the pattern of apparent motion of objects, i.e, it is the motion of objects between every two consecutive frames of the sequence,

OpenCV: Optical Flow Algorithms

The function stores a flow field in a file, returns true on success, false otherwise. The flow field must be a 2-channel, floating-point matrix (CV_32FC2). First channel corresponds to the flow in the horizontal



Optical flow

Optical flow or optic flow is the pattern of apparent motion of objects, surfaces, and edges in a visual scene caused by the relative motion between an observer and a scene. Optical flow can also

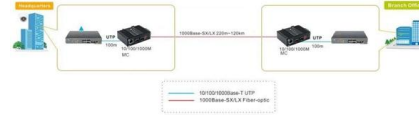


Optical Flow Sensor Testing and Setup --



Plane documentation

Optical Flow Sensor Testing and Setup Be sure you have setup the sensor specific parameters according to its wiki page. If the sensor is mounted to a stabilized gimbal or mount, set

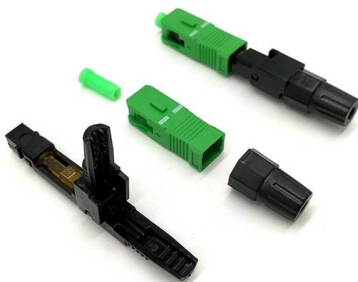


Optical Flow -- OpenCV-Python Tutorials beta

It returns next points along with some status numbers which has a value of 1 if next point is found, else zero. We iteratively pass these next points as previous points

The FOA Reference For Fiber Optics

The Optical Time Domain Reflectometer (OTDR) is useful for testing the integrity of fiber optic cables. It can verify splice loss, measure length and find faults. The



How to Set Up Optical Flow & Rangefinder Sensors in

Learn how to set up a rangefinder optical flow sensor in iNav for enhanced FPV drone stability in Position and Altitude Hold modes.



What Are the Key Parameters of Optical Modules

Understand the key parameters of optical modules, including transmission rate, distance, wavelength, and fiber compatibility, for better network

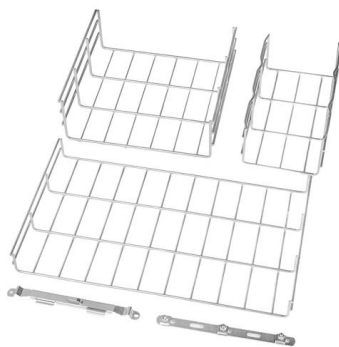


Problem in converting the MSPv2 to get flow X, flow Y,

ProjectsProgramming vjkin July 13, 2024, 10:32am 1 Hi, I currently using the module "optical flow lidar sensor" of MATEK SYS to read the flow X,

High Performance Analog Interface and Clock Products

It is typically measured as an rms value and caused by electronic (thermal) or optical noise in the system. Random jitter will increase with increasing system bandwidth and decreasing received



Understanding Optical Return Loss (ORL) in Optical

Understanding Optical Return Loss Optical fiber communication professionals might have heard about ORL (Optical Return Loss) during design



Python OpenCV

For OpenCV's implementation, the magnitude and direction of optical flow from a 2-D channel array of flow vectors are computed for the optical flow problem. The angle (direction) of flow



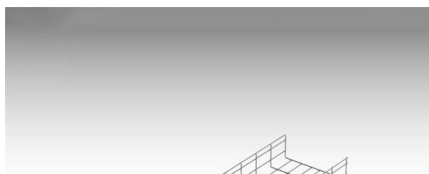
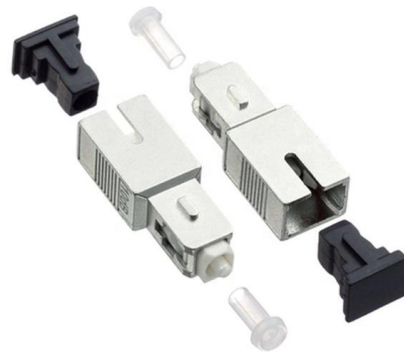
What is Return Loss in Optical Transceivers? (RL / Back

Understand optical return loss in transceivers, why it matters for network stability, and how LINK-PP modules deliver high RL performance.



NVIDIA OPTICAL FLOW SDK

NVIDIA GPUs starting from Turing generation contain a hardware-based optical flow accelerator (hereafter referred to as NVOFA). The NVOFA hardware accepts a pair of YUV/RGB frames as input



Grid Cable for marine and offshore applications

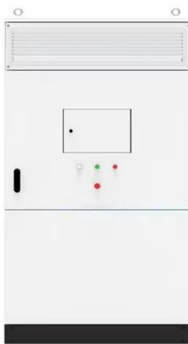
The FOA Reference For Fiber Optics

Measuring Reflectance or Return Loss
Reflectance Reflectance (which has also been called "back reflection" or optical return loss) of a connection is the amount



Optical Flow Algorithms

The function finds all of the motion segments and marks them in segmask with individual values (1,2,). It also computes a vector with ROIs of



Optical Flow in OpenCV (C++/Python) , LearnOpenCV

In this post, we will take a look at the theoretical aspects of Optical Flow algorithms and their practical usage with OpenCV.

OpenCV Optical Flow , Working , Examples of OpenCV

In this article, we have seen the concept of optical flow based on Lucas kanade algorithm with corresponding programming examples and their outputs to



Optical Flow

Optical flow is the pattern of apparent motion of image objects between two consecutive frames caused by the movement of object or camera. It is 2D



How To View Port Status And Optical Module Information On

When optical modules are installed on switches, it is necessary to read internal module parameters to monitor operating status, including link connectivity, real-time transmit/receive optical



AWS Builder Center

Connect with builders who understand your journey. Share solutions, influence AWS product development, and access useful content that accelerates your growth.

The Most Comprehensive Guide Of Optical Modules

Explore the ultimate guide to optical modules. Learn types, functions, performance metrics & how to choose the right module for your fiber network.



NVOFA Programming Guide

NVOFA engine's capabilities can be accessed using the NVIDIA Optical Flow APIs (hereafter referred to as NVOF APIs), exposed via NVIDIA Optical Flow SDK. This document



Optical Flow

Optical Flow Prev Tutorial: Meanshift and Camshift Goal In this chapter, We will understand the concepts of optical flow and its estimation using Lucas-Kanade



Contact Us

For datasheets, pricing, or custom high-speed optical interconnect solutions, please visit:

<https://www.syropy.com.pl>