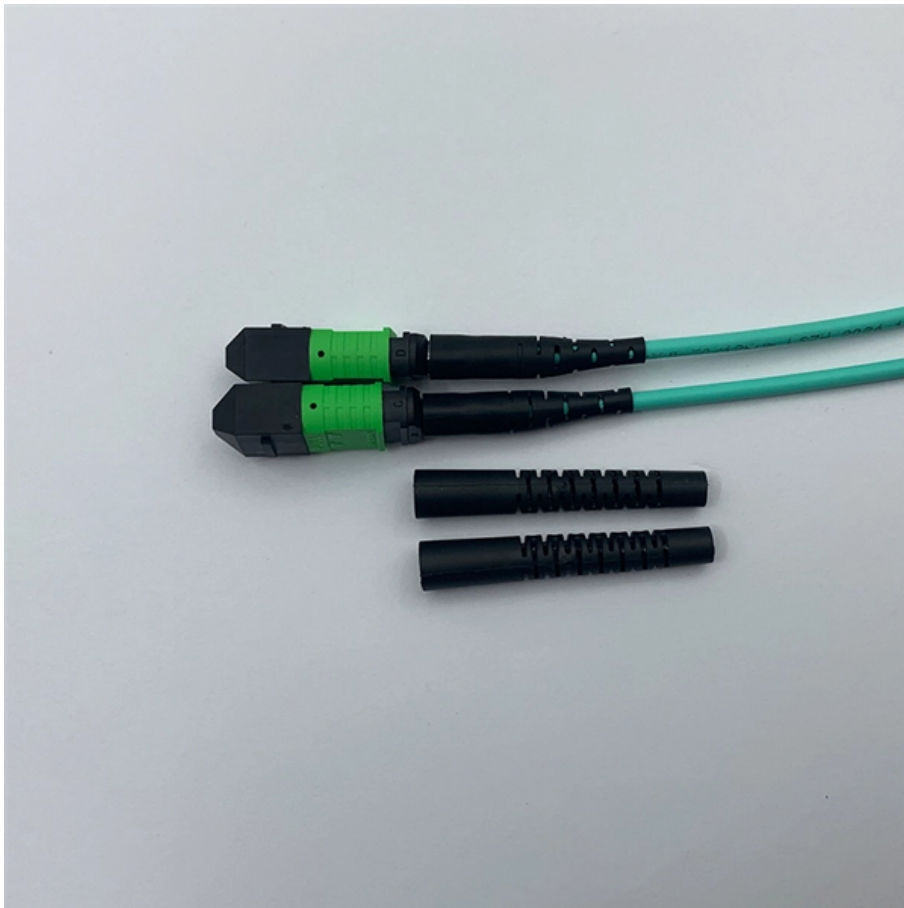


One switch aggregates data



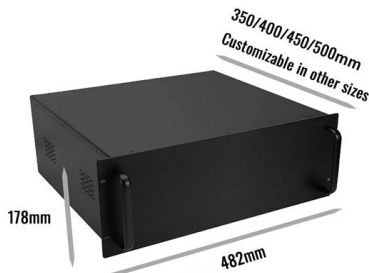


Overview

An aggregation switch is a network device that consolidates traffic from multiple access switches, wireless access points, or other edge devices and forwards it to core switches or routers. By bundling multiple network connections into a single high-bandwidth link, aggregation switches help. Amounts or summary statistics are used in place of atomic data rows, which are often collected from several sources when data is aggregated. 3ad link aggregation enables you to group Ethernet interfaces to form a single link layer interface, also known as a link aggregation group (LAG) or bundle.



One switch aggregates data



Aggregation layer , FortiSwitch 7.6.0 , Fortinet Document Library

Its primary goal is to increase network scalability by providing a single place to interconnect multiple access switches and the core layer.

Aggregate bandwidth of a gigabit switch

This one might be the dumber question ever asked in this place, but here it is: If I have 20 machines, all equipped with gigabit ethernet NICs, all connected to a gigabit switch, is the maximum



What is Aggregation Switch? Role in Network Connection

An Aggregation Switch is a type of Network Switch that allows multiple network connections to be combined into a single link. This helps to

What Is an Aggregation Switch and How to Choose?

So, what exactly is an aggregation switch, and how do you choose the right one? Let's examine it in detail.



Ubiquiti Unifi Aggregating Switch ports - Understanding

Unifi switches require the aggregate ports to be Sequential (physically near each other) Devices, Ports, Edit the 1st port in your bundle, Profile Overrides,

Everything You Need to Know About Aggregation Switch

The primary function of an aggregation switch is to aggregate and forward data from multiple network devices, such as access switches, wireless



Interfaces User Guide for Switches

The topology used in this example consists of one switch with a LAG configured between two of its 10-Gigabit Ethernet interfaces. The switch is connected to an aggregation switch.



How To Set Up Switch Link Aggregation

This simple test also illustrates an important concept regarding Link Aggregation. A single data flow between two end points will travel over a single link in the LAG.



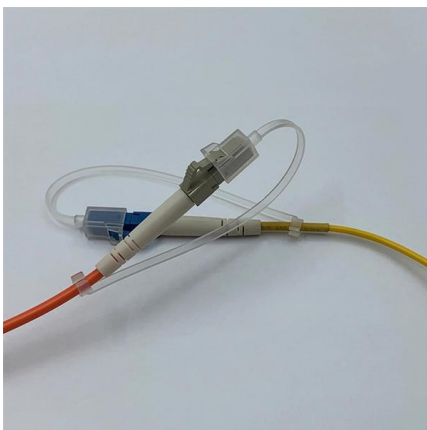
SMB Network Design: Core vs. Distribution vs. Access Switches

What Is a Distribution Switch? The Policy Enforcer The distribution switch is the network's middle manager. It aggregates all traffic from multiple access switches and intelligently routes it



What Is an Aggregate Switch?

Discover the role of an aggregation switch and its function in a network. Explore differences between aggregation, access, and core switches.



What is an Aggregation Switch?

The aggregation switch's main function is to aggregate the data of the access layer switch and forward it to the core switch.



Understanding the Role of Aggregation Switch in

Aggregation switches, often referred to as distribution switches, play a pivotal role in the hierarchical network architecture. These switches serve as



Understanding Ethernet Port Aggregation: Benefits,

In summary, Ethernet port aggregation offers numerous benefits such as increased bandwidth, improved switching and routing, enhanced connectivity,

In-network aggregation for data center networks: A survey

In switch data plane, NetSHA can reduce query results which do not meet TOP-K requirement with sort-reduce method, and can also aggregate query results to reduce network traffic.



Aggregation layer , FortiSwitch 7.6.0 , Fortinet Document Library

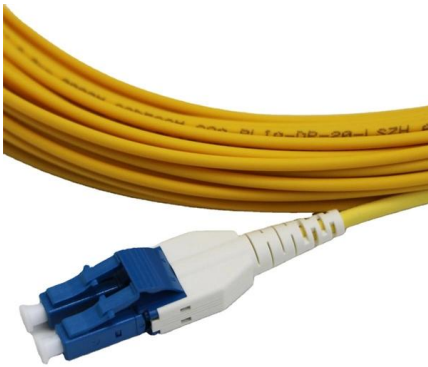
The following figure shows the aggregation-layer design, including the data center building block. Fortinet recommends that no access devices (including wireless access points, surveillance

What is Aggregation Switch? Role in



Network Connection

Currently, most switches on the market have wire-speed switching capabilities. Therefore, when choosing an Aggregation Switch, we should select



Port Aggregation: Boosting Throughput and Redundancy in Enterprise

Port aggregation is a networking technique that combines multiple physical ports on a switch into a single logical link. By splitting traffic across these aggregated ports, it increases

What is an Aggregate Switch?

An aggregate switch consolidates traffic from access switches, while a core switch forms the backbone of the network, interconnecting multiple aggregate switches and providing access to



How Switch Aggregation Works -- In One Simple Flow

Switch aggregation is transforming how networks handle data traffic. By combining multiple switches into a cohesive system, organizations can



Aggregated Ethernet Interfaces Overview

All links in the LAG are permanently operational unless the switch detects a link failure within the Ethernet physical layer or data link layers. The topology used in this example consists of one switch



Data Center Design: Basic 3 Layers, Core, Aggregation,

Data Center Basic Layered Design of Core, Aggregation, and Access The data center network design is based on a proven layered approach, which

Cisco Switch Port Aggregation

How to configure an etherchannel link between 2 cisco 2960 switches. The etherchannel allows to combine several physical switch ports into one logical port.



In-depth analysis: What is an aggregation switch?

In many network constructions, we have all heard of switches. So do you really understand switches? Why are aggregation switches often overlooked?



Port Aggregation Configurations

Port Aggregation Port aggregation allows you to group multiple physical ports into one unit. Port aggregation is useful for implementing load balancing and provides a redundant link backup.



What Is an Aggregation Switch?

What Is an Aggregation Switch? Unveiling the Network's Backbone An aggregation switch is a powerful networking device that consolidates connections from multiple access switches,

What is an Aggregation Switch? , Features and Practical Benefits

It is a networking tool called an aggregation switch that enables the consolidation of several network connections into a single link. This makes it possible to boost bandwidth and



Link Aggregation: What is it, and How Does it Work?

Link aggregation groups can also be coupled together onto one network switch, creating a link aggregation switch. The rule that defines which



Enhance Your Network with a Link Aggregation Switch:

Discover the benefits, configuration, and best practices of using a link aggregation switch to enhance your network. Combine multiple Ethernet links into



Core, Aggregation, or Access Switches? Choose the

Aggregate and connect access switches for users into aggregation switches and within the data center to achieve a high availability, high

Switch Stacking vs Link Aggregation , Cycle.io

Learn more about how switch stacking and link aggregation serve different purposes, but they are often used together to build resilient and scalable networks.



Contact Us

For datasheets, pricing, or custom high-speed optical interconnect solutions, please visit:
<https://www.syropy.com.pl>