

# **One H3C optical port on the switch**





## One H3C optical port on the switch

---



### Switches-H3C

Data Center Switches Campus Network Switches AON Network Industrial Switches Ultra-wideband: 400 G Based on the industry-leading 400 G platform, H3C

### H3C ES4200 Gigabit Switch Series-H3C

H3C ES4200 series is the latest development of Gigabit speed managed Ethernet switch. Besides high-performance access, it also offers abundant security access policy control and enhanced network

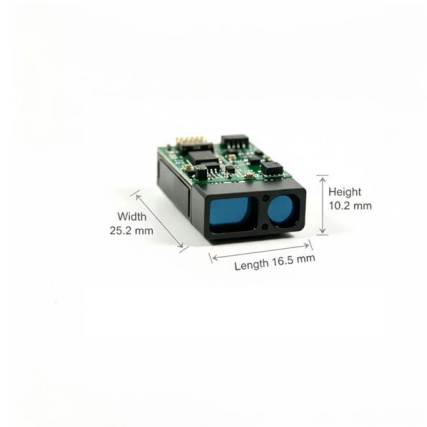


### Support

Home Support Switches H3C S3100 Switch Series Reference Guides Command References H3C S3100-52P Ethernet Switch Command Manual-Release 1500 (V1.01)

### Support

1 Port Correlation Configuration The term switch in this document refers to a switch in a generic sense or an access controller configured with the switching function unless otherwise specified. When



### Optical Transceiver Manufacturer, H3C Switch

am user-bind ip-address 10.1.1.2 mac-address 00e0-fc22-f8d3 H3C switch configuration description: the above configuration completes the global binding of



### Optical Transceiver Manufacturer, H3C Switch

H3C switch configuration description: Due to the use of port parameters, the port will be taken as a reference, that is, at this time, port E0 / 1 only allows PC1 to access



### Support

The 10/100Base-TX and 1000Base-T ports of the H3C S7500E switches use RJ-45 connectors and support MDI/MDI-X auto-sensing. Use category-5 twisted pair cables or above to connect the



### H3C S5830 Switch Series Configuration Examples

The authentication port (UDP) used by RADIUS servers is 1812 according to standard RADIUS protocols. However, the port (UDP) is set to 1645 on an H3C device that functions as the

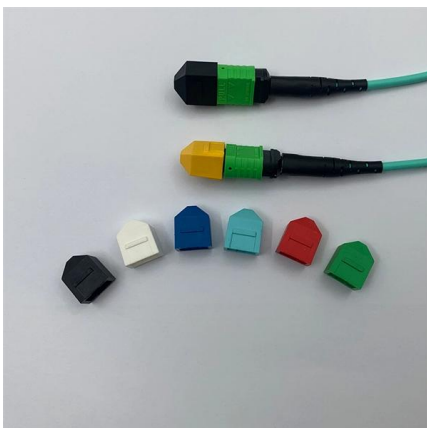


### H3C Ethernet Switch Combo Port Configuration and

This video provides a comprehensive guide on configuring and troubleshooting Combo ports on H3C Ethernet switches. It covers the different operational states of Combo ports, including electrical port,

### How To Read Optical Module Information On H3C Switches

The following uses the Moduletek QSFP-40G-LR4 module connected to an H3C S6820 switch as an example to introduce how to read information of the connected optical module on an H3C switch.



### Support

1 Connecting your switch to the network This chapter describes how to connect your switch to a network. The first time you access a switch you must log in through the console port. On the switch,



## Switches-H3C

H3C industrial switches can operate in  $-40^{\circ}\text{C}$  -  $75^{\circ}\text{C}$  environments for a long time, and use industrial components to reach IP40 rating. At the same time, with shockproof, anti-electromagnetic



### Support

4 Connecting your switch to the network This chapter describes how to connect your switch to a network. The first time you access the switch, you can only log in to the CLI through the console port

### H3C Device Optical Copper Multiplexing Port Configuration Guide

In H3C network devices, a combo port (optical-copper multiplexing port) is a multifunctional interface that integrates two physical media: optical fiber and copper cable.



### Support

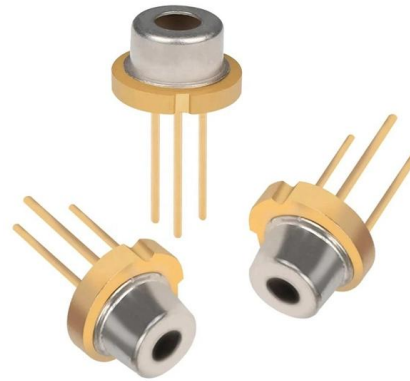
A console cable is an 8-core shielded cable, with a crimped RJ-45 connector at one end for connecting to the console port of the switch, and a DB-9 female connector at the other end for connecting to the

### How to Master H3C Device Switch



## Commands: A

Ready to optimize your network management? Explore our comprehensive guide to H3C device switch commands. Upgrade your skills and

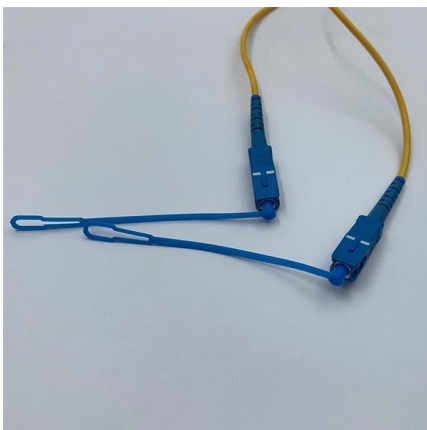


## H3C Products Catalogue

The H3C S5170-EI switch adopts the industry-leading ASIC technology to develop a new generation of high-performance, high-port density, high-security and easy-to-install intelligent network-managed

## H3C S5560X-HI SERIES INSTALLATION MANUAL Pdf

Disconnected optical fibers or transceiver modules might emit invisible laser light. Do not stare into beams or view directly with optical instruments when the switch is



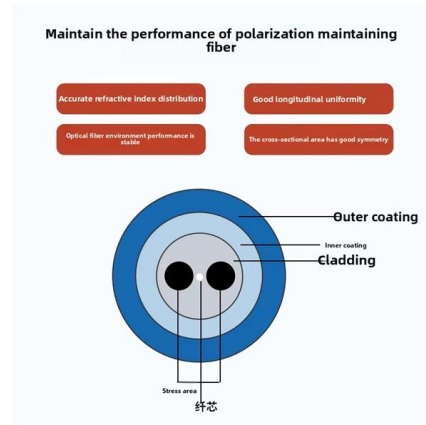
## Support

You can configure all the three types of ports on the same device. However, note that you cannot directly switch a port between trunk and hybrid and you must set the port as access before the



## Basic CLI Commands on H3C Switch

Learn how to create users, VLANs, enable Telnet and SSH, configure Spanning Tree Protocol, enable DHCP snooping, define trunk ports, and create access ports on

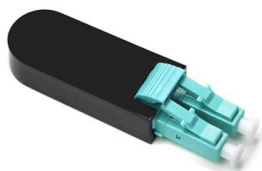


## H3C & NVIDIA Networking Reference Solutions Guide

Mellanox intelligent interconnect solutions increase data center efficiency by providing the highest throughput and lowest latency, delivering data faster to applications and unlocking

## H3C confirms performance of its new 800G CPO

H3C completed a massive test of its co-packaged optics (CPO) enabled Ethernet switch (H3C S9827) driving traffic across 64 800G ports. The



## Support

4 Connecting your switch to the network This chapter describes how to connect your switch to a network. Accessing the switch for the first time The first time you access the switch you must use a



### H3C Device Optical Copper Multiplexing Port Configuration Guide

In H3C network devices, a combo port (optical-copper multiplexing port) is a multifunctional interface that integrates two physical media: optical fiber and copper cable. The combo enable copper and combo



### Support

01-Access Volume Home Support Switches H3C S7500E Switch Series Configure & Deploy Configuration Guides H3C S7500E Series Ethernet Switches Operation

### How To Read Optical Module Information On H3C Switches

Optical modules are widely used in switches, network cards, routers, and other communication equipment. Reading optical module information during use helps understand its real-time operating



### Support

To make some other ports have the same configuration as that of a specific port, you can copy the configuration of the specific port to the ports. Specifically, the following types of port configuration can



## H3C All-Optical Network Technology White Paper-6W100

In contrast, the EPON-based POL solution leverages the EPON OLT's enhanced Ethernet forwarding and switching capabilities. iOptic network devices H3C provides an extensive array of iOptic Ethernet



## Contact Us

---

For datasheets, pricing, or custom high-speed optical interconnect solutions, please visit:  
<https://www.syropy.com.pl>