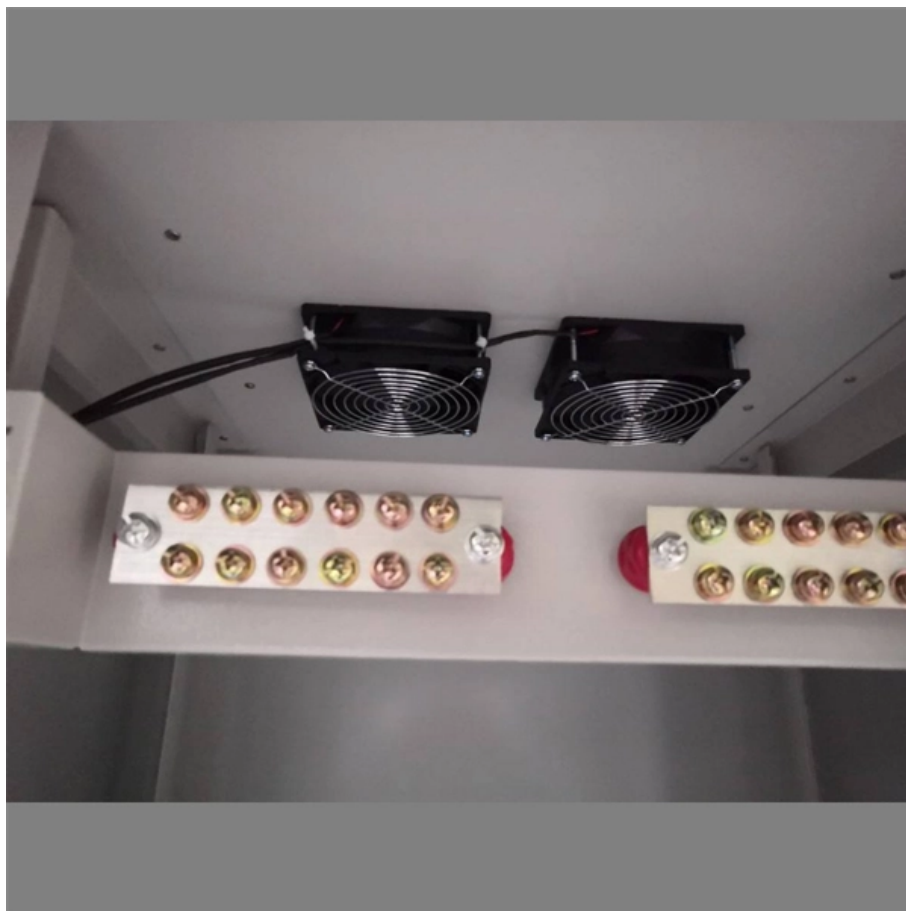


OTDR damages optical module





OTDR damages optical module



OTDR Theory and Operation

OTDR Theory and Operation The optical time-domain reflectometer (OTDR) is used to test the light-transmission ability of an optical fiber cable or span, and to determine the location and magnitude of

OTDR

Ensure the integrity of your fiber optic network with an Optical Time Domain Reflectometer (OTDR). OTDR testing analyzes fiber optic cable performance

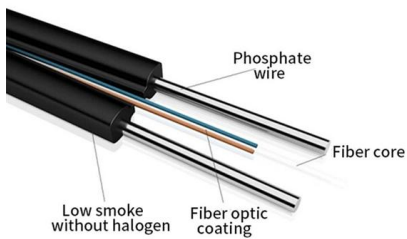


What Is OTDR: A Comprehensive Overview

Picture an OTDR as the sharp-eyed detective of fiber optic networks--a tool that uncovers the hidden details of cables carrying data across

Fundamentals of an OTDR

This parameter reveals the maximum optical loss an OTDR can analyze from the backscattering level at the OTDR port down to a specific noise level. In other words, it is the maximum length of fiber that

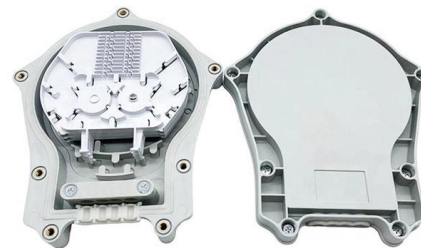


Important Factors for Choosing an Optical Time Domain Reflectometer (OTDR)

Important Factors for Choosing an Optical Time Domain Reflectometer (OTDR) This white paper provides key information about OTDRs and guidance to newcomers in the telecommunication fiber

OTDR measurements: The complete guide to

DIN EN 61280-4-2 is the definitive standard for OTDR measurements on single-mode optical fibers. As the VDE publishing house explains, this



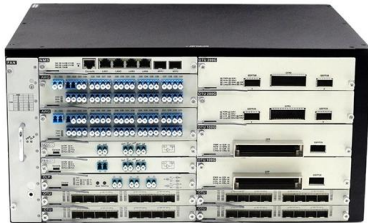
Optical Time-domain Reflectometers - OTDR, operation

Optical time-domain reflectometers inspect fiber-optic links, measuring losses and reflections from faulty connections or splices.



Europacable Technical newsletter Optical time domain reflectometer

Readers of this document are encouraged to seek information on specific matters regarding Optical cables and components from the manufacturer or provider and to consider the Technical Standards



OTDR: Your Ultimate Troubleshooter

The OTDR calculates the reflectance of an event by comparing output power to the reflected light, excluding backscatter. Problems with fiber links often

Mastering Fiber Optic Testing: A Comprehensive Guide

Enter the Optical Time-Domain Reflectometer (OTDR) --a powerful tool for diagnosing, testing, and maintaining fiber optic cables. This guide dives



OTDR Testing for Fiber Optic Networks: A Beginner's

Introduction In fiber optic network installations, ensuring the highest level of performance and minimizing downtime is critical. Optical Time-Domain



OTDR testing

Unlike sources and power meters which measure the loss of the fibre optic cable plant directly, the OTDR works indirectly. The source and meter duplicate the



The FOA Reference For Fiber Optics

Coherent OTDRs For Testing Transoceanic Cables
Take the FOA Self-Study Program on OTDRs or the MiniCourse on Reading An OTDR Trace at Fiber U.

SFP-based integrated OTDR for 1:64 TDM-PON testing and diagnose

An OTDR integrated in the SFP optical transceiver module re-using the upstream wavelength is proposed for TDM-PON testing and diagnose from the Central Office without modification of



What Is OTDR In Optical Fiber

OTDR (Optical Time-Domain Reflectometer) is a critical tool for assessing fiber optic cable integrity. It works by launching high-powered light



Fiber Optic Testing: Understanding Key OTDR Event Types

The OTDR is used frequently to determine length and loss characteristics, including testing optical fibers for faults and related issues that can negatively affect network performance.

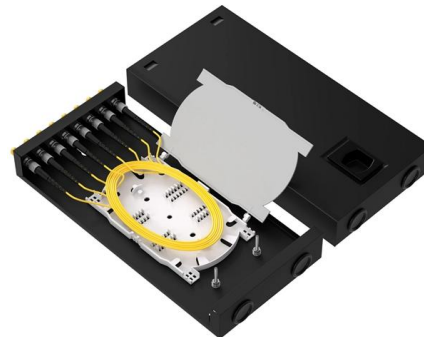


OTDR Meaning: What It Is & Why It Matters

Learn the OTDR meaning and how this essential tool is used for testing and troubleshooting fiber optic networks with precision.

A guide to OTDR technology for fibre optic networks

In essence, an OTDR serves as the guardian of network performance, ensuring that data flows smoothly and efficiently. Innovations in OTDR devices As



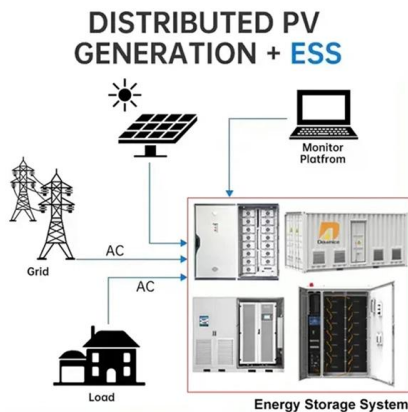
The FOA Reference For Fiber Optics

The FOA Reference Guide To Fiber Optics Frequently Asked Questions On OTDRS And Hints On Their Use OTDRs, also known by their technical name optical time



What Are the Common Problems Experienced with an Optical Time

An Optical Time Domain Reflectometer (OTDR) is an important tool in fibre optic network testing, but if not used correctly, it can cause inaccurate readings. Learn about the common

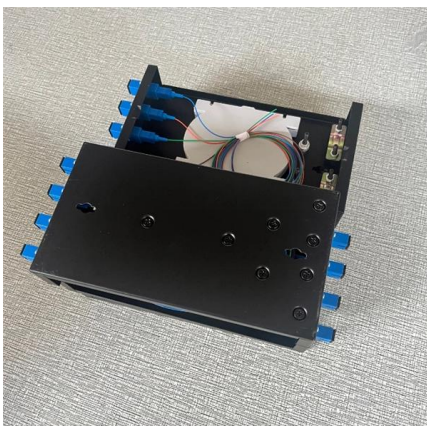


How to Use an OTDR to Locate Splice Loss and Connector Issues

Discover how an Optical Time Domain Reflectometer (OTDR) helps identify splice loss and connector issues in your fibre optic installations. Learn tips and FAQs from CMW.

OTDR: Your Ultimate Troubleshooter

You're ready to use an optical loss test set (OLTS) for Tier 1 fiber certification. If some critical fiber links exceed the application's loss budget,



Maintenance and Troubleshooting of a PON Network with an OTDR

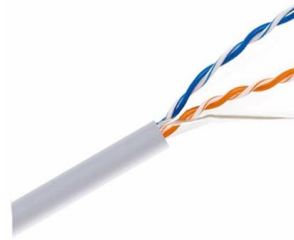
Troubleshooting a faulty passive optical point-to-multipoint network (PON) can be more complex than a point-to-point network. This application note looks at the use of non-intrusive or active fiber testing for

What Is an OTDR? How to Locate Fiber



Breaks and Splice Losses

Understanding OTDR Technology An Optical Time-Domain Reflectometer (OTDR) is an essential tool for anyone working with fiber optic networks. It is used to characterize and troubleshoot



OTDR Basics for Fiber Testing and Network Fault Location

Essential OTDR fundamentals, including working principles, dead zones, fiber attenuation, and accurate troubleshooting methods in optical networks.

SFP Transceiver Micro-OTDR Improves Network Reliability

Detecting optical fiber faults can be a real hassle - Use micro-OTDR for fiber fault detection in your remote monitoring to improve network reliability.



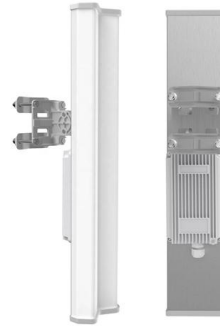
Understanding OTDRs

the OTDR detector. The resultant multiple received signal levels could produce unpredictable results on the OTDR display and could affect level measurements. It could also produce "ghosts"



OTDR Testing Solutions , EXFO

Optical return loss (ORL): The loss of signal power resulting from the reflection caused at a discontinuity in an optical fiber. It represents a ratio of the power that is reflected over the power that goes in.



Optical Time-Domain Reflectometer (OTDR)

An OTDR (Optical Time Domain Reflectometer) measures the loss of signal in an optical fiber by sending a pulse of light down the fiber and analyzing the reflections that come back. The device

Contact Us

For datasheets, pricing, or custom high-speed optical interconnect solutions, please visit:
<https://www.syropy.com.pl>