

ONU splitter OLT connection method





Overview

The detailed connection process is as follows: Hardware Equipment OLT Device: OLT3610-08GP4S ONU Device: TA1910-4GVC-W PLC Splitter RJ45 Network Cable, Console Cable Software and Tools. Our goal is to help you better understand the management process of FS OLT and ONU. How to Connect Fiber Splitter & Configure ONU with OLT | Onu connected Vsol olt through splitter. ONU (Optical Network Unit): The ONU is installed at the customer's premises and connects the fiber optic line from the OLT to the customer's local network (such as routers, switches, and computers). Based on passive optical networking technology, Fiber-to-Home (FTTH) access network is a point-to-multipoint network structure, which utilizes optical splitters to transmit central station signals to multiple end-users. The connection between the OLT and ONU is mainly completed through the ODN (Optical Distribution Network), and the process is as follows: - Physical Link Setup: A single-mode optical fiber is led out from the OLT's PON port.



ONU splitter OLT connection method

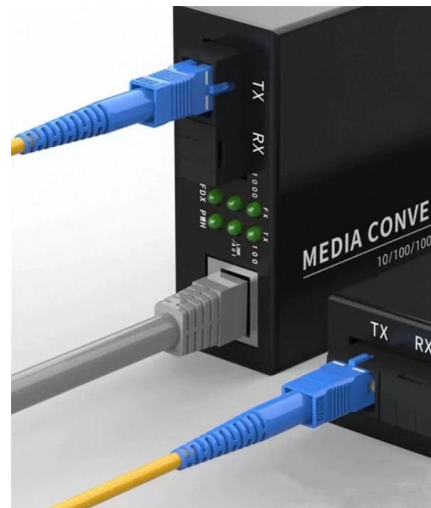


Guide to Easily Onboarding & Configuring ONU: Case of FS

In a single system, one OLT can support multiple ONUs through a splitter. This article will use the FS OLT3610-08GP4S and the TA1910-4GVC-W ONU as examples to illustrate the

ABC of PON: Understanding OLT, ONU, ONT and ODN

OLT supports bandwidth allocation that allows to make smooth delivery of data float to the OLT, that usually arrives in bursts from customer. ONU could be connected by various methods



Understanding OLT-ONU Synchronization: A

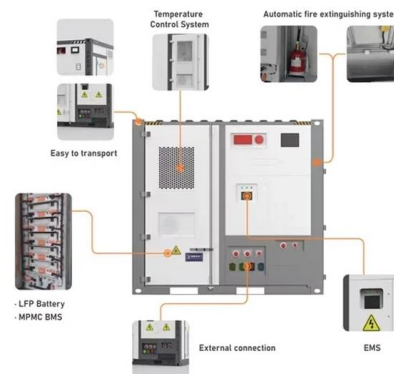
Q5. Who should understand OLT-ONU synchronization? Network administrators, technicians, and individuals involved in fiber optic network management should

PON Network Components Overview: OLT, ONU, ONT,

ODN is also an indispensable part of the PON system, which serves as the physical



transmission medium between the ONU and the OLT and the

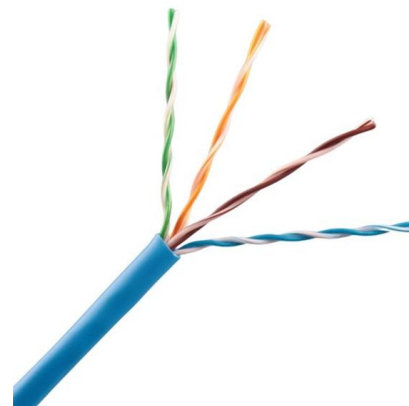


Optical splitter

Optical splitter is a component of PON network. It is a passive device connecting OLT and ONU. Its function is to distribute downstream data and concentrate upstream data. The optical

Home -The Fiber Optic Association

The OLT is installed at the headend and each OLT port connected into the fiber to the designated service area and the splitters installed to serve the intended



What is OLT, ODN, ONU and ONT in FTTH Network?

OLT supports bandwidth allocation that allows making smooth delivery of data float to the OLT, that usually arrives in bursts from the customer. ONU



ABC of PON: Understanding OLT, ONU, ONT and ODN

ABC of PON: Understanding OLT, ONU, ONT and ODN Fiber to the Home (FTTH) has started to be taken seriously by telecommunication companies around the world, enabling



PON Network Components Overview: OLT, ONU, ONT,

This article will introduce passive optical networks (PON), in which we will introduce everything about OLTs, ONTs, ONUs, and ODNs, including their

FTTH Products , OLT, ONU, Optical Splitters, Fiber

Discover essential FTTH products like OLT, ONU, optical splitters, and fiber distribution boxes. Learn how to design and deploy an efficient FTTH network for



PON Network Structure: Understanding ODN,OLT,

The PON Network will be introduced in this article, which mainly involves the basic components and related technology including OLT, ONT OR



Understanding OLT, ONU, ONT and ODN in PON

OLT supports bandwidth allocation that allows making smooth delivery of data float to the OLT, which usually arrives in bursts from the

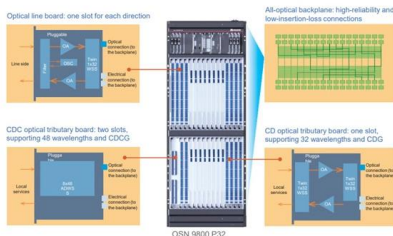


PON Network: Understanding OLT, ONU, ONT and ODN

The PON Network will be introduced in this article, which mainly involves the basic components and related technology including OLT, ONT, ONU, and ODN. What

How to Connect Fiber Splitter & Configure ONU with

How to Connect Fiber Splitter & Configure ONU with OLT , Onu connected Vsol olt through splitter more.



Understand GPON Technology

The OLT is connected to the optical splitter through a single optical fiber, and then the optical splitter connects to ONUs/ONTs. GPON adopts WDM



What is OLT, ODN, ONU and ONT in FTTH Network?

A Gigabit Ethernet Passive Optical Network (GEAPON) system is generally composed of an optical line terminal (OLT) at the service provider's



OLT and ONU Installation Practices: How to Deploy

Deploying an FTTH network with OLT and ONU components can seem complex, but by following the best practices outlined here, you can ensure



Level 1 and Level 2 Splitting in FTTH Networks-BLOG-Grandway

In the application of one-stage splitting in the FTTH network, the optical splitter can be centrally installed at the central station, but in order to save the cost of the fiber, the optical splitter is usually installed



What are OLT, ONU, ONT and ODN in PON?

An optical distribution network (ODN) mainly has primary splitting and secondary splitting, or centralized splitting and cascade splitting. The structure of primary light splitting is an



optical line termination

OLT (Optical Line Terminal) is the equipment located at the service provider's central office. It serves as the main connection point for multiple ONU



Guide to Easily Onboarding & Configuring ONU: Case of

In a single system, one OLT can support multiple ONUs through a splitter. This article will use the FS OLT3610-08GP4S and the TA1910-4GVC-W

Optical line terminal for managing link status of optical network units

3. The OLT as set forth in claim 2, wherein said link status discriminator is adapted to determine the link status of said identified ONU to be normal if the report signal is received at a start time of the



How Does An OLT Connect To An ONU?

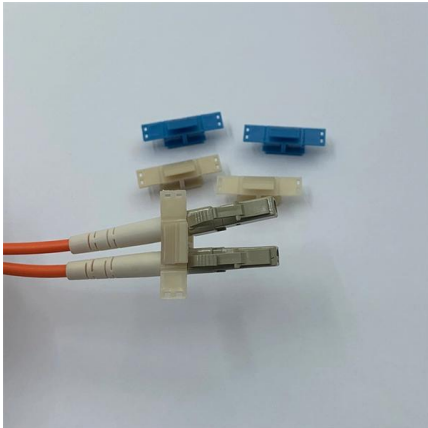
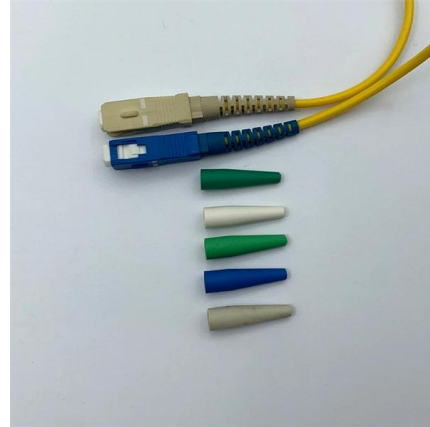
How the OLT Connects to the ONU. The connection between the OLT and ONU is mainly completed through the ODN (Optical Distribution Network), and the process is as follows: -





Understanding OLT, ONU, ONT, and ODN in PON

OLT supports bandwidth allocation, allowing data to be smoothly sent to the OLT, usually in a bursty manner from customers. ONUs can be connected

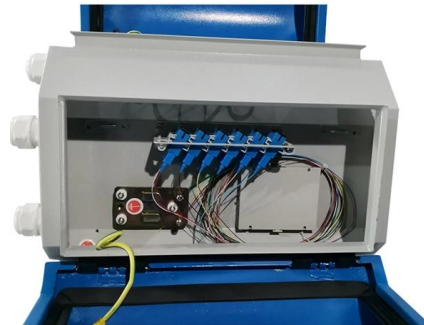


Guide to OLT and ONU Interoperability

How to Solve OLT-ONU Interoperability Facing interoperability issues between OLT and ONU, network protocol organizations and many service

Optical Line Terminals Selection Guide: Types, Features

Operation Passive optical networks are telecom systems that route data through fiber optic connections. They are referred to as passive due to their use of unpowered



Contact Us

For datasheets, pricing, or custom high-speed optical interconnect solutions, please visit:
<https://www.syropy.com.pl>