

OLT Optical Signal Amplifier





Overview

These devices are used to amplify optical signals between OLT and ONU in ODN link, to extend transmission distance and increase optical ratio. The laser driver provides optimum performance with reliable dual loop extinction ratio control and eye-shaping. The MAX3632 burst-mode limiting amplifier is designed specifically for 622Mbps or 1244Mbps GPON (G. An OLT (Optical Line Terminal) is the core device in a Passive Optical Network (PON) — the interface between the core network and the subscriber's optical access network. It aggregates multiple ONUs/ONTs through optical splitters and handles data distribution, management, and synchronization.



OLT Optical Signal Amplifier

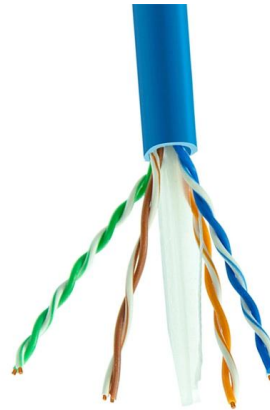


Optical Line Terminal: Key to Modern Fiber Networks

Optical Line Terminals (OLTs) are key in Fiber Optic Communication. They connect service providers to subscribers. These devices are part of Passive Optical Networks (PON). They

16 Port High Power Fiber Optical Signal Amplifier Patch Panel Olt

The WS-57EYAx series high-power optical amplifier is a high-power multi-port output fiber amplifier with a gain spectrum bandwidth of 1535~1565nm. It is mainly designed for applications

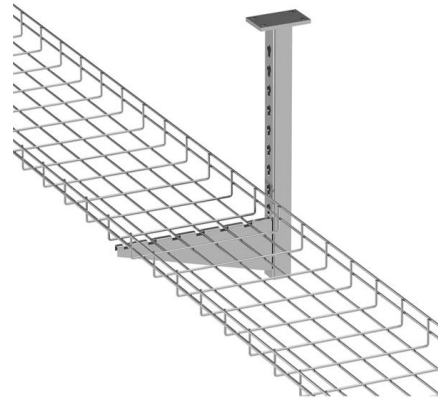


OLT (Optical line terminal)

The OLT typically consists of three major components: the optical interface, the switching fabric, and the network management system. The optical

GPON OLT Basics and Beyond: A Comprehensive Introduction

Downstream (1490nm wavelength): The OLT transmits optical signals in broadcast mode to all ONTs. Each ONT extracts its own data packets based on a unique identifier. Upstream



Optical Amplifiers for Access and Passive Optical

Passive optical networks are able to transmit signals from the optical line terminal (OLT) to optical network unit (s) (ONUs) up to 20 km, but in some

GPON OLT Combined DML Laser Driver , Semtech

GN25L99 is a combined a 2.5Gbps DML Driver and 1.25Gbps burst mode limiting amplifier for gigabit passive optical network (GPON) optical line terminal (OLT) applications. The laser driver provides



#fiberoptic #ftth #gpon #telecom #networking #olt #ont #onu

Fiber Optic is one of the most advanced communication technologies used today to deliver ultra-fast and stable Internet connections. Unlike traditional copper cables that transmit electrical





Experimental results for the OLT-Rx configurations. The best signal

Optical line termination transmitter (Tx) and receiver (Rx) concepts using a semiconductor optical amplifier (SOA) for the next generation of passive optical networks (NG-PON2) are

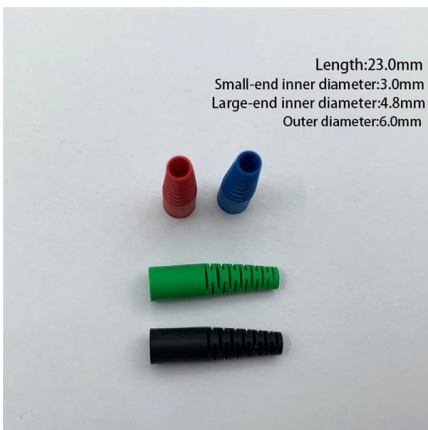
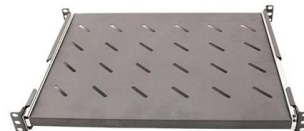


XPon Repeater, Gpon/Epon Amplifier

These devices are used to amplify optical signals between OLT and ONU in ODN link, to extend transmission distance and increase optical ratio.

Optical Line Terminal (OLT)

OLT Module - It is the key component of the OLT which converts electrical signals into optical signals. Uplink Interfaces - Uplink interfaces are the



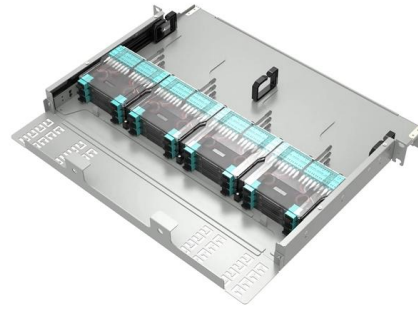
PON-X GPON OLT Combo , GN25L80B , Semtech

GN25L80B is a combined 2.5Gbps DML driver and 1.25Gbps burst mode limiting amplifier for gigabit passive optical network (GPON) optical line terminal (OLT) applications.



What is an Optical Line Terminal (OLT)?

The Optical Line Terminal (OLT) is a crucial component in Passive Optical Networks (PON), responsible for managing and distributing fiber-optic signals from an



What is an Optical Line Terminal? - OLT Working Principle

An Optical Line Terminal (OLT) consists of the following components - CPU, power supply, fan unit, service frame, and other uplink boards. Data is

Read the Key Functions of the Optical Line Terminal

Explore the essential functions of Optical Line Terminals (OLTs) in GPON networks. Learn about data transmission, authentication, bandwidth



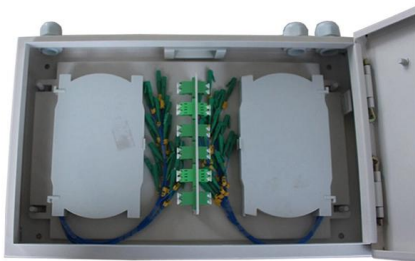
What Is an OLT? , Definition, Function & Role in GPON

In short: The OLT (Optical Line Terminal) is the central control unit of a Passive Optical Network (PON). It converts data signals, manages bandwidth,



Lecture 8: Intro to Optical Amplifiers

Optical Amplifiers Three classes Booster (power) amplifiers: Boost power into transmission fiber, low NF, high Psat. In-line amplifiers: Periodically amplify signal due to fiber attenuation, high G, high Psat.



Defining OLT: Optical Line Terminal

Optical Signal Generation: Once the data is encapsulated, the OLT generates optical signals by modulating laser diodes or light-emitting diodes (LEDs) at specific wavelengths. Each wavelength

OLTS: Optical Line Termination Systems Guide

Dive into OLTS (Optical Line Termination Systems) with our comprehensive guide. Explore this vital part of fiber optic networks.



AOC
QSFP28 to 4*SFP28
100G
OM3/OM4



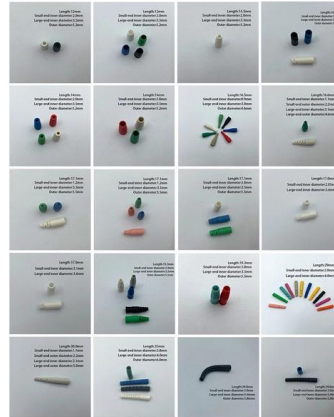
PON-X GPON OLT Combo , GN25L80B , Semtech

Overview GN25L80B is a combined 2.5Gbps DML driver and 1.25Gbps burst mode limiting amplifier for gigabit passive optical network (GPON) optical line terminal (OLT) applications. The laser driver



Repeater Amplifier GPON , 2 PON OLT Extender

The 2 PON OLT extender device can effectively save OLT quantity and extend network transmission distance. The OEO fiber repeater equipment have been widely applied for long-distance



MAX3632 DS

The MAX3632 burst-mode limiting amplifier is designed specifically for 622Mbps or 1244Mbps GPON (G.984) optical line terminal (OLT) receiver applications.



Optical Line Terminal (OLT) The Ultimate Guide

The guide demystify what an OLT is, how it operates, the different technologies and the knowledge for configuration, and compatibility.



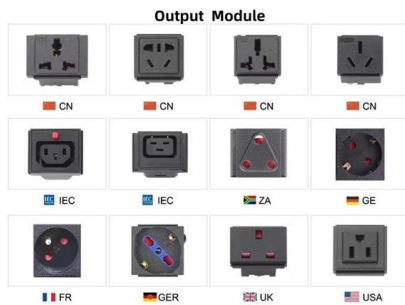
Optical power meter

An optical power meter (OPM) is a device used to measure the power in an optical signal. The term usually refers to a device used for measuring the average power in fiber optic systems.



Optical line termination

An optical line termination (OLT), also called an optical line terminal, is a device which serves as the service provider endpoint of a passive optical network.



Why Choose Us

- 20 Years of OEM/ODM**
20 Years factory manufacturing experience.
- Professional R & D team**
30 years experience in optical electronic engineer.
- Fully Certified**
Our are certified CE, UL, TUV, ISO9001, ISO13193 etc.
- Timely Delivery**
21 production line, 500+ employees, timely delivery guaranteed.
- Quality Assurance**
Professional QC team with full process inspection.
- After sales service**
After Sales Service for Customer Satisfaction.

What is OLT (Optical Line Terminal)? Types, Features

What is an OLT The full form of OLT is Optical Line Terminal. It serves as the service provider's endpoint in a PON architecture, managing signal

Optical Line Terminals Selection Guide: Types, Features

Optical line terminals, also called optical line terminations (OLTs), serve as endpoints for passive optical networks (PONs). They convert electrical signals from



The Comprehensive Guide to PON Architecture: Mastering OLT,

Comprehensive guide to Passive Optical Networks (PON), covering OLT, ODN, ONU/ONT, GPON/XGS-PON/NG-PON2 standards, deployment strategies, and FTTH network



2PON OEO GPON Repeater Amplifier

BAUDCOM's GPON OEO equipment is an optical transmission equipment which magnify and reshape signals during optical transmission process. It can



OLT in Telecommunications: A Comprehensive Guide

OLT acts as the interface between the optical network and the service provider's infrastructure, facilitating the transmission of data, voice, and video services. Overview of OLT's

Contact Us

For datasheets, pricing, or custom high-speed optical interconnect solutions, please visit:
<https://www.syropy.com.pl>