

North Africa Through-beam Fiber Optic Sensor Platform





North Africa Through-beam Fiber Optic Sensor Platform

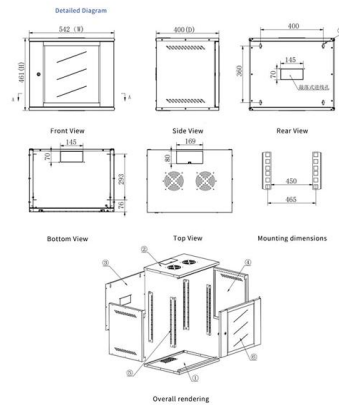


Through-Beam Fiber Optic Amplifier Sensor Market

According to our latest research, the global Through-Beam Fiber Optic Amplifier Sensor market size is valued at USD 1.42 billion in 2024, with a robust compound annual growth rate (CAGR) of 8.3%

E20827

All information about the E20827 at a glance. We assist you with your requirements. Technical data Instructions Scale drawings Accessories.



Fiber Sensors

The sensing section of a Fiber Unit has no electric circuits. This makes it highly reliable even under severe environmental conditions, such as temperature,

Through-Beam Fiber Optic Amplifier Sensor Market Research Report

According to our latest research, the global through-beam fiber optic amplifier sensor market size reached USD 1.74 billion in 2024, reflecting robust demand across diverse industrial sectors.



fiber optic through-beam and dif. reflection sensors

The ipf plastic fiber optic systems consist of a flexible plastic fiber with a sensing head and an optoelectronic fiber optic amplifier. The principle of operation is similar to a through-beam sensor or



Thru-Beam/Opposed Mode Sensors , TRI-TRONICS

Self-contained, easy-to-use sensors available in a wide variety of sensing models (thru-beam, retroreflective, proximity and fiber optic) to fit virtually any application.



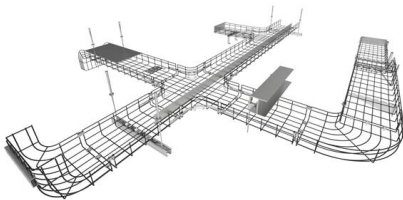
How to Specify Fiber Optic Sensors

Fiber optic sensors, sometimes called fiber photoelectric sensors, include two devices which are typically specified separately: the amplifier and the



Through-Beam Fiber Optic Sensors

When it comes to Through-Beam Fiber Optic Sensors, you can count on Grainger. Supplies and solutions for every industry, plus easy ordering, fast delivery and 24/7 customer support.

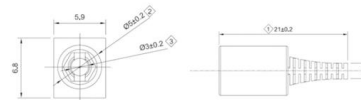


Products

photoelectric sensors including fiber sensors, displacement sensors, vision sensors, LED lightings for machine vision, non-contact thermometers and accessories for

Fiber Optic Sensing Association (FOSA)

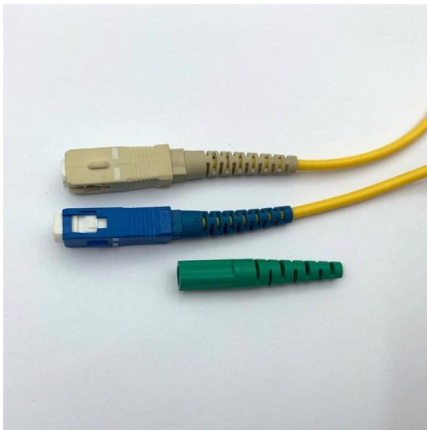
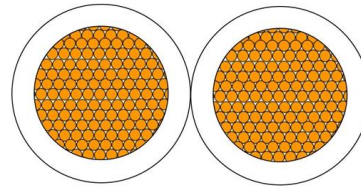
Fiber optic sensing works by measuring changes in the "backscattering" of light occurring in an optical fiber when the fiber encounters vibration, strain or temperature change.



E21317

ifm efector, inc. 1100 Atwater Dr. Malvern, PA 19355 Phone 800-441-8246 email cs @ifm

Discover tailored solutions for your fiber infrastructure needs. From consulting to supplying top-quality accessories, we're your trusted partner in Africa. Unleash



Understanding Fiber Optic's Role in Photoelectric Sensing

Photoelectric sensors and fiber optic sensors are very similar in a lot of ways, but which one is superior in function and durability, and under what

E20606

For installation with limited mounting space
Operation as through-beam sensor Long range
For cutting to size Small bending radius

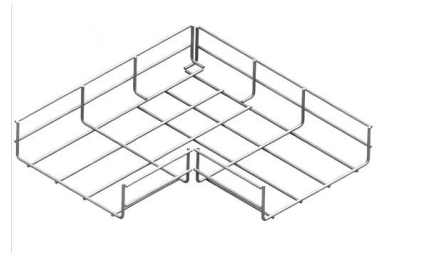


Fiber Optic Sensor Cable, 2M Array-type, Thru-beam,

Our thru-beam fiber optic sensor cable can detect an object with a minimum size of 30 mm. This 2M array-type sensor cable is ideal for industrial automation,



ifm efector, inc. 1100 Atwater Dr. Malvern, PA 19355 Phone 800-441-8246 email cs @ifm



FT Thru-Beam Type Fiber Optic Sensors

Panasonic Industrial Automation FT Thru-Beam Type Fiber Optic Sensors feature tough, high-quality fiber and a reduced risk of breaking and

Through-beam sensors

Through-beam sensors from Balluff serve to detect objects reliably, regardless of surface, color, material - even with a heavy gloss finish. They consist of separate



Through Beam Fiber Optic Sensors - Mouser

Through Beam Fiber Optic Sensors are available at Mouser Electronics. Mouser offers inventory, pricing, & datasheets for Through Beam Fiber Optic Sensors.



Telco Sensors South Africa

Telco has become one of the most sought after, high performance optical sensors manufacturers in the world. The Telco products are globally recognized as the



Array Through-beam Fiber Optic Sensor

Engineered for seamless integration, this sensor is fully compatible with all standard fiber optic amplifiers, including both conventional and analog output amplifiers,



Fiber-optic leap bridges African digital divide

Anchored in Kenya, the fiber-optic cable will run through Uganda, Rwanda, the Democratic Republic of Congo (DRC), Zambia, Zimbabwe and



Through Beam Fiber Optic Proximity Sensors , GlobalSpec

Fiber optic through beam sensor -- E20059 from ifm efector inc. For installation with limited mounting space. Operation as through-beam sensor. Long range. Resistant to various aggressive chemicals.



Fiber Optic Sensors

This is a series of fiber optic sensor heads designed to be connected to a fiber optic sensor amplifier. The FU Series offers a wide variety of options including thru-beam, reflective, retro-reflective and



Global Info Research focusing on Industry Analysis, Market Research

Global Info Research owns large basic databases and expert resources. Global Info Research owns large basic databases and expert resources, focusing on Industry Analysis, management consulting, IPO

Contact Us

For datasheets, pricing, or custom high-speed optical interconnect solutions, please visit:
<https://www.syropy.com.pl>