

Nordic QSFP28 Optical Module NRZ





Nordic QSFP28 Optical Module NRZ



50G Optical Transceiver Modules , Broadex Technologies

These reliable and robust QSFP28 modules support high speed bit rates up to 50Gb/s over link distances up to 40km and can be offered with a choice of 1-lane

Optical module

The earliest forms of optical modules had an analog NRZ electrical interface. In the transmit direction, the optical module would directly drive the laser or LED with the analog signal coming from the front



200G QSFP28-DD SR8 100M Optical transceiver

Mechanical Diagram Compatible with the QSFP28-DD Type 2 Specification for pluggable form factor modules.

2m (7ft) 100G QSFP28 to 4X25G SFP28 Passive Direct Attach

Cisco QSFP-100G-SR4-S Compatible 100GBASE-SR4 QSFP28 4x25G NRZ 850nm 100m MMF DOM MPO-12/UPC Optical Transceiver Module Cisco QSFP-4SFP25G-CU1M Compatible 1m (3ft) 100G



400G Optical Modules Explained: SR4 Vs. DR4 Vs. FR4

Key differences between SR4, DR4, FR4, and LR4 400G optical modules. Expert advice from Asterfusion engineers to optimize your data center

Custom 100G QSFP28 Single Lambda Module , DR/FR/LR , WolonFiber

Interface legacy 100G ports with 400G hardware. The 100G QSFP28 Single Lambda Module utilizes PAM4 DSP technology for 500m to 10km single-mode connections.



50G Optical Transceiver Modules , Broadex Technologies

Broadex Technologies' high performance and cost effective 50G Optical Transceiver Modules are built utilizing our innovative COB technology. These reliable and

What Are the Key Parameters of Optical

Understand the key parameters of optical modules, including transmission rate, distance, wavelength, and fiber compatibility, for better network



QSFP28-50G-ER Optical Transceiver Module

TARLUZ 50GBase-ER QSFP28 transceiver module is designed for 50 Gigabit Ethernet, it transmits over single mode fiber up to 40km. This 50G QSFP28



Complete Guide to QSFP-DD, QSFP28, QSFP56,

Complete Guide to QSFP-DD, QSFP28, QSFP56, SFP56, and SFP28 Optical Modules As high-speed networks continue to evolve, optical transceivers like



SFP-DD vs QSFP28: 100G Interface Comparison

To bridge these two ecosystems, 100G SFP-DD to QSFP28 Active Optical Cables (AOCs) have emerged as a practical cross-standard interconnect. This article examines the technical





Single-Lambda 100G Pluggable Optics Solution

It shows what goes into today's 100G QSFP28 pluggable optical modules. Notice that they are inherently four-channel devices, both in the optical

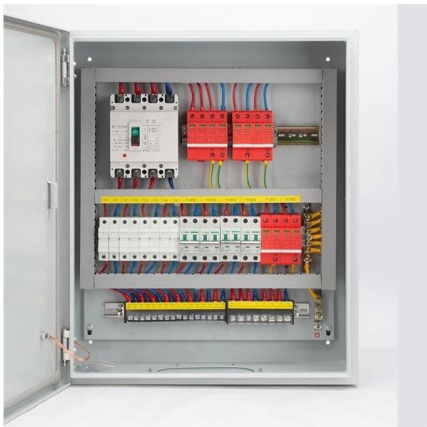


Optical module - A comprehensive exploration

The optical module is one of the core devices of the optical communication system, and its development has a vital impact on its related

QSFP28 Transceiver: Complete 100G Connectivity Guide (2026)

QSFP28 transceiver guide covering module types, pricing, compatibility, and deployment. Learn how to choose, deploy, and troubleshoot 100G QSFP28 optics.



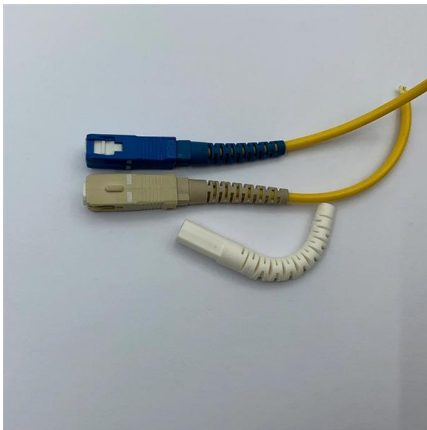
QSFP28 Transceiver: Complete 100G Connectivity Guide

This guide equips network engineers with everything they need to know about QSFP28 optical transceivers -- from module types and specifications to switch compatibility, power



100G QSFP28 Transceivers: Types, Specs and How to Choose

A complete guide to 100G QSFP28 transceivers covering types, specs, reach, compatibility, and how to choose the right module for data center and telecom networks.



What is QSFP28? Guide to 100G Ethernet , NetAlly

The QSFP28 interface specifies NRZ encoding, how do I get PAM4? The standard QSFP28 electrical interface uses NRZ encoding. If a specific application requires PAM4, the

QSFP28 optical transceivers , Smartoptics

QSFP28 are part of Smartoptics's hot-swappable small form-factor family of optical transceivers and cables.



Custom 100GBASE-SR4 QSFP28 Module , MPO 100m/300m

Order customized 100GBASE-SR4 QSFP28 modules. Available in standard 100m, eSR4 300m, and Industrial-grade options for dense spine-leaf interconnects.



100G-QSFP28-AI and Data Center Networking

These products feature four channels of 25G NRZ electrical signals and four channels of 25G NRZ optical signals, a duplex LC connector, a distance of up to



100GBASE-LR4 QSFP28 4 x 25G NRZ 1310nm 10km DOM Duplex

100GBASE-LR4 QSFP28 Optical Transceiver Module (SMF, 1310nm, 10km, LC, DOM) The QSFP28 module provides 100GBase-LR4 throughput up to 10km over a standard pair of single mode fibre



100G QSFP28 Transceiver Modules , Optical

FS offers a growing portfolio of 100G QSFP28 modules. The 100G QSFP28 module solution provides high-performance 100GbE connectivity for data centres,



Contact Us

For datasheets, pricing, or custom high-speed optical interconnect solutions, please visit:
<https://www.syropy.com.pl>