

Nicaragua Cold Aisle 1U





Nicaragua Cold Aisle 1U

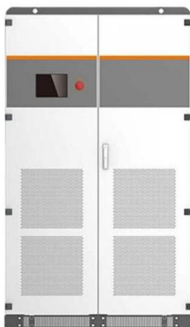


Explore hot and cold aisle containment for your data center

Hot and cold aisle containment can help you maintain the best air flow, temperature and humidity in the data center to keep servers running efficiently.

Blanking Panel

Designed to effectively seal openings in IT equipment cabinets and control airflow for optimized cooling effectiveness. The HotLok® Blanking Panel reduces hot spots



Cool Shield 23? Blanking Panels (1U)

The use of blanking panels is a best practice for any data center implementing hot and cold aisles and is a necessity for any facility which implements aisle

Approaches to Data Center Containment

The issue with hot aisle/cold aisle designs is that the air is free to move wherever it will. In a cold aisle containment approach, the data center installs end of row



Cold Aisle Containment , Legrand

By maintaining consistent, predictable temperatures, cold aisle containment minimizes thermal stress and reduces the risk of overheating, improving reliability and extending equipment lifespans.



HotLok SwitchFix Passive Network Switch Cooling

This allows cold air from the cold aisle to reach the network switch for proper cooling. HotLok SwitchFix's passive airflow system channels air from the cold aisle to the



Modular Cold Aisle Containment w/ 45U Server Rack

AZE offers smart modular customizable hot and cold aisle containment solutions with 42U to 52U floor standing server rack enclosures. Save energy, reduce hotspots

1U Cable Pass-Through Panel, Brush Strip ,



SmartRack® SR1UBRUSH is a 1U cable pass-through panel with brush strip. The brush strip blocks unwanted airflow inside rack enclosures and server cabinets.



Data Center Hot/Cold Aisle Containment Systems , Eaton

An aisle containment system is a simple way to improve cooling efficiency in hot aisle/cold aisle rack configurations. Essentially creating a room within the aisle,



Vertiv(TM) SwitchAir , Data Center Rack Cooling Solutions

Improves equipment efficiency by providing network equipment with the same cold aisle air temperature as other devices in the rack. Decreases wraparound hot



Cool Shield Blanking Panels

Cool Shield Individual Blanking Panels are fire-rated plastic panels which install quickly to fill unused rack spaces within server cabinets. Available in 19" or 23",

Cold Aisle Containment in Data Centers ,

Cold aisle containment systems use doors at aisle ends, ceiling panels or lids above racks, and structural frames to create enclosed zones where cold supply air flows



Cold Aisle Containment

Modular designed frame made of cold roll steel, with thickness $\geq 1.2\text{mm}$ to ensure the firmness and security. Aisle containment in the data center requires that

Hot and cold aisle cooling containment

In most cases, the rack mount can be used within these aisle cooling containment solutions. Below are general guidelines for assessing the installation of a rack mount in a hot or cold aisle cooling



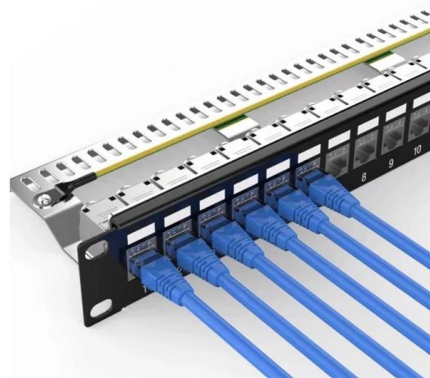
Aisle containment system buying guide

Aisle containment system buying guide Discover the key factors to consider when choosing a hot aisle/cold aisle containment system. This buying guide will help you understand the features of an



48U Rack Cabinet Data Center Hot And Cold Aisle

High quality 48U Rack Cabinet Data Center Hot And Cold Aisle Containment Systems Modular Data Center from China, China's leading product market 48U



What are hot and cold aisles in the data center?

Using hot and cold aisles in a data center is part of an energy-efficient layout for server racks and other computing equipment. Find out more here.

Aisle containment

Door and roof components separate hot and cold air in the data centre. Such a separation is pivotal to increasing the efficiency of climate control technology. It may be used as a hot or cold aisle



Thermal Solutions for Servers Part 1

Figure 1. Hot aisle/cold aisle room layouts are widely regarded as the starting point for heat management and energy efficiency in server rooms. [42U

HotLok Blanking Panels



HotLok ® blanking panels are a snap-in blanking panel that provides a 99%+ effective seal in IT equipment cabinets. The state-of-the-art technology, designed



PNL-BRSH-1

As an alternative to blanking panels, 1U Brush Guard Panels allow pass through of cables between the front and rear of a rack or cabinet while still providing thermal protection to maintain hot aisle/cold

What is the standard distance between Hot Aisles and between Cold Aisle

When you consider current and future growth and rack dimensions what is the recommended or required distance for staff to have to work in a hot or cold aisle?



Cold-Aisle Rack Support , Dell PowerEdge CSP Edition Servers

Rack rails are leveraged from Dell PowerEdge HS5620: To support serviceability from only the front of the system (Cold Aisle Serviceability) for R670 and R770 only where the cold-aisle storage modules



MKLS-FS-CA-SYST2FS Minkels Nexpanse

All modular product options for the Next Generation Cold Corridor® introduced last year can be integrated. The Minkels Free Standing Cold Corridor® is a fully free



General guidelines for data centers

Equipment layout and air delivery paths The hot-aisle, cold-aisle arrangement that is explained in the ASHRAE publication, "Thermal Guidelines for Data Processing Environments",

dataracks

Products Modular Security Cages Aisle Containment Racks & Cabinets Cabinet Accessories Wallboxes Retrofit Solutions Electromechanical Solutions



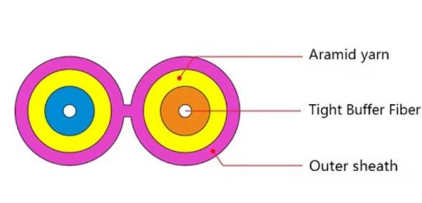
Improve Row Airflow Management with Aisle Containment

Firstly, ensure a hot-aisle-cold-aisle layout is utilised to improve Raised Floor Airflow Management. Place floor grilles only in cold aisles, replacing them with solid tiles



Data Center Design: Hot Aisle & Cold Aisle - Length

Efficient airflow management in data centers relies heavily on proper Hot Aisle and Cold Aisle configurations. To maintain thermal performance, equipment



Hot Aisle vs Cold Aisle Containment Explained (Data Center Cooling)

In this guide, we'll break down how hot aisle and cold aisle configurations work, what containment systems do, and why airflow management is critical in today's high-density data centers.

Contact Us

For datasheets, pricing, or custom high-speed optical interconnect solutions, please visit:
<https://www.syropy.com.pl>