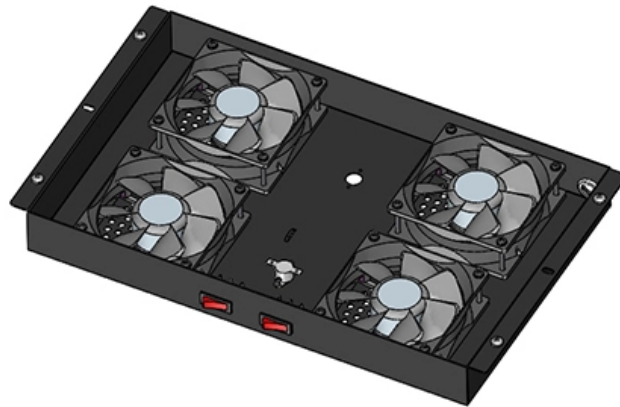


New remote power supply model for subway use





Overview

This review introduces an innovative approach by integrating multi-agent systems (MASs) with advanced artificial intelligence (AI) algorithms, focusing on their potential to create fully autonomous self-healing control architectures for subway power networks. The subway power supply system, as a critical component of urban rail transit infrastructure, plays a pivotal role in ensuring operational efficiency and safety. Taking a certain subway line as an engineering example, this paper first introduces the power supply scheme of the general traction rectifier unit, and then proposes and expounds a flexible DC traction power supply system that uses a bidirectional converter device to replace the general rectifier. This article discusses the outcomes of a study conducted to explore new power supply sources for subway trains. The continuously increasing passenger traffic in metropolitan cities makes it necessary to build new subway lines and upgrade existing ones, taking into



New remote power supply model for subway use



Research and Design of a New Generation Intelligent Monitoring

In response to the low level of intelligence, harsh operating environment, and high failure rate of the existing subway power supply system (SPSS), this article proposes a new generation of subway

Application of Traction Power Supply for Metro Rail

Based on the traction environment of metro rail transit in the field of urban public safety, this paper studies and analyzes the application of



The New York Subway: Chapter 05, System of Electrical

The New York Subway: Chapter 05, System of Electrical Supply 5,000 Kilowatt Alternator - Main Power House. Energy from Engine Shaft to Third Rail THE

Integration of Multi-Agent Systems and Artificial

To address these critical challenges, this review presents a novel approach for integrating multi-agent systems (MASs) with advanced artificial



Intelligent control strategy for subway overhead line substation

2.1 Model structure In current subway operation routes, the prevalent practice is to use a dual-side power supply system. This configuration ensures that each section is supported by

Research on state monitoring method of subway DC traction power supply

In this paper, the existing rules and principles of line test are summarized, the simulation model of subway traction power supply system and locomotive is established, and the results of line test under



Energy Storage in the Subway Electric Drives Power Supply System

The article concentrates on building an energy-saving model for the subway power supply system, which, combined with modern adjustable speed induction motor drives, controls current flows





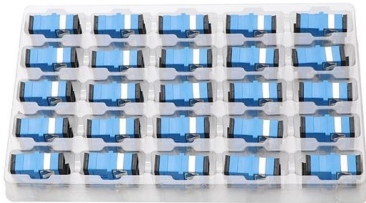
Electric Stock Digital Twin in a Subway Traction Power System

Abstract An approach to designing subway traction power supply facilities with an 825-V traction power system is considered in a general digital model. The continuously increasing



Application of Traction Power Supply for Metro Rail

It improves the efficiency of traction power supply detection, stabilizes the running track of subway traffic, and is conducive to the protection and



KR20180104875A

The present invention relates to a power supplying and controlling system of a subway DDC, which has an ESS, comprising a battery unit, a super capacitor, a bidirectional inverter, a battery management



Subway Traction Power Supply System Based on PWM

The energy supply system of subway traction power supply system based on PWM rectifier shows the topology of a dual transformer with three



Reuters , Breaking International News & Views

Find latest news from every corner of the globe at Reuters , your online source for breaking international news coverage.



Subway DC Power Supply System Solution

7. Application Benefits This DC power supply system effectively addresses the power reliability issues in subway systems, ensuring continuous operation of lighting,

A Three-Wire Traction Power-Supply System for a Subway Train

Modern subways use a decentralized power-supply system, according to which a traction substation is located at each station. There are several lines with sections of centralized power supply, where



Research on the Application of Flexible DC Power Supply

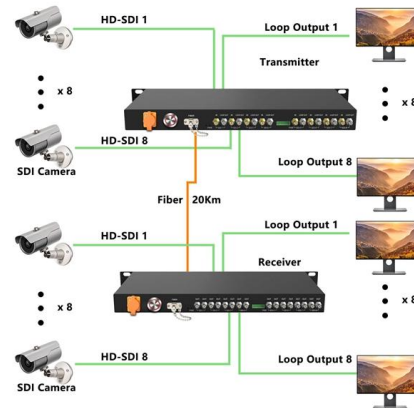
Taking a certain subway line as an engineering example, this paper first introduces the power supply scheme of the general traction rectifier unit, and then proposes and expounds a flexible DC traction





An In-Depth Investigation of Innovative Electric Traction Power Supply

This article discusses the outcomes of a study conducted to explore new power supply sources for subway trains. The power supply system for traction is an integral and inseparable

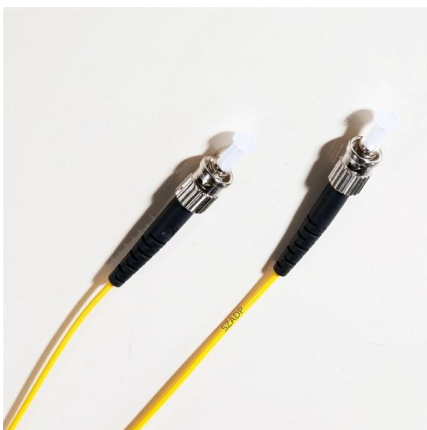


The Working Principle of Subway Charging Systems and the Role of

Subways generate substantial regenerative braking energy. Future modular supplies will interface with energy storage to harvest and reuse this power, reducing grid dependency.

A subway traction power supply system and control method

The present invention discloses a subway traction power supply system and control method, and relates to the technical field of urban rail transit traction power supply.



Superconducting DC power transmission for subway lines that can

To analyze the energy-saving and suppression of voltage drop effect in subway line, we design a superconducting feeder system for subway line and conducted power-transmission tests



Energy Storage in the Subway Electric Drives Power Supply System

The article concentrates on building an energy-saving model for the subway power supply system, which, combined with modern adjustable speed induction motor dri



Analysis of Subway Power Supply Compensation System Based on

The subway provides a high-speed, safe and convenient solution to urban traffic problems and becomes the infrastructure of urban development in our country. However, the electronic devices in the

The Working Principle of Subway Charging Systems and the Role of

This article presents a comprehensive overview of subway charging systems, focusing on the architecture, challenges, and performance of Modular Power Supply solutions in railway



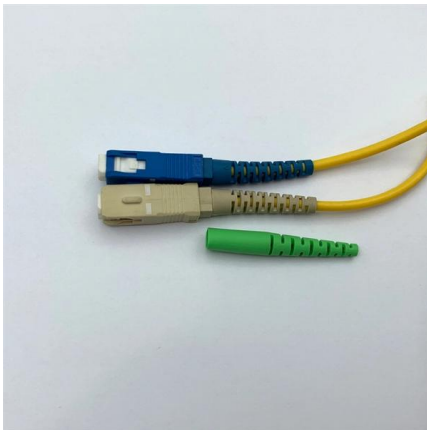
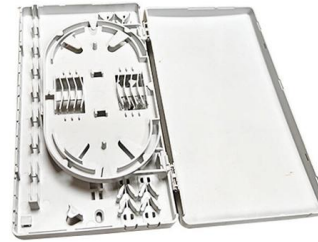
Traction power supply system in subway adopting three-level voltage

The paper proposes a novel subway traction power supply system (DC 1500 V) based on three-level voltage source PWM rectifier. It has many merits, such as energy saving, high power



A Methodology for the Evaluation of the Power Supply

The power supply capability serves as a pivotal element in the operational evaluation of subway traction power supply system. The results can



Design and Health Evaluation of Monitoring Test Platform for Metro

This paper aims to design a practical test platform through MATLAB modeling, so as to establish a simulation model of subway traction power supply system, and comprehensively monitor

Electric Stock Digital Twin in a Subway Traction Power System

Abstract An approach to designing subway traction power supply facilities with an 825-V traction power system is considered in a general digital model.



(PDF) Stray Current Distributing Model in the Subway

In this paper, the existing stray current distributing model is firstly reviewed and analyzed. Secondly, rail potential problem analyzed by means of





Contact Us

For datasheets, pricing, or custom high-speed optical interconnect solutions, please visit:

<https://www.syropy.com.pl>