

Network Rack Side Panel Installation Method





Network Rack Side Panel Installation Method

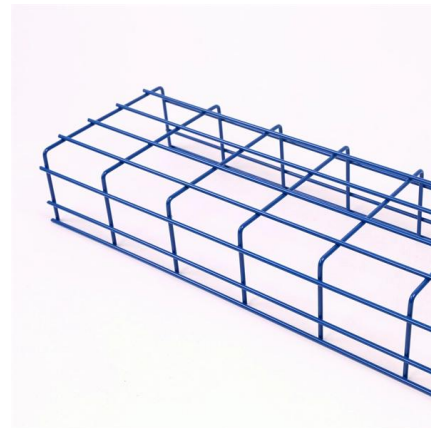


Complete Guide to Patch Panels: Types, Benefits, and

Discover everything you need to know about patch panels, including different types, their benefits, and installation tips. Enhance your network

Network Rack Installation 101 - VCELINK

In this guide, we'll see the tools you'll need, the best and proven practices for server rack setup and network rack setup, and the detailed steps

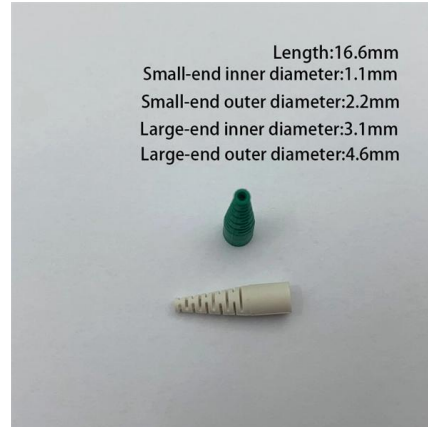


How To Wire a Server and Network Rack , Tips & Best

What we present here are suggestions and not rules, and there might be a strategy that works out better for your particular installation. Always have

Structured Cabling Patch Panel Setup Guide for Your

Our guide delivers actionable, step-by-step best practices for rack layout, cable management, and patch panel installation. Following these steps

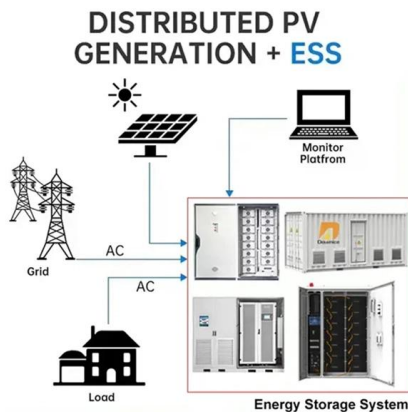


How to Correctly Wire a Network Rack? - VCELINK

A network rack, also called a server rack, is a structure or framework designed to contain the network equipment (for example, routers, servers,

How To: Dressing Ethernet Cables into Patch Panels

This blog post provides a step-by-step guide on how to dress Ethernet cables into patch panels. The post covers the following topics: preparing the



Microsoft Word

Install the server only in a rack that has perforated doors. Do not block any air vents, usually 15 cm (6 inches) of air space provides proper airflow. Plan the device installation starting from the bottom of



Types of Panels for Server Racks , Sysracks

Left and right side panels for the rack enclosures placed on both sides; middle partitions are not required since they will be bundled together. This allows

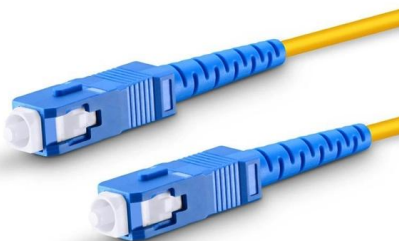


Eaton REC Series IT Rack

SAFETY WARNINGS This manual contains important instructions that you should follow during installation and main-tenance of the REC Series Enclosure. Please read all instructions before

How to Rack a Server: Step-by-Step Guide & Best

Learn how to rack a server with this detailed step-by-step guide. Includes setup tips, cable management, cooling, and safety practices.



Installing the in the side of a rack

Align the blank filler panel on the outside of the rack flanges. Attach the filler panel to the rack flanges and then to the long mounting-bracket with one M6 screw per bracket.



A Cabinet and Rack Installation

Requirements Specific to Standard Open Racks
In addition to the requirements listed in the "General Requirements for Cabinets and Racks" section on page A-1, if mounting the chassis in an open rack



How to Install a Rack Mount Patch Panel?

When a patch panel associated with the rack mount, it refers specially to a kind of patch panel connecting with racks or rack mount enclosures in a

Server rack cabling best practices

So we just ordered upgrades for all of our switches and firewalls in our main rack in the server room which, to be honest, is a rats nest of cables. I've



Patch Panels: A Complete Guide

Patch Panel Size However, if you are looking to connect a large number of devices, there are plenty of options for expansive patch panel designs.



Rack Mounting and Enclosure Options: A

Whether you're setting up a new network or reorganizing an existing one, mounting racks and enclosures effectively is crucial for maintaining a clean, efficient, and



High-quality ceramic ferrule



Replacing Components

Removing and Installing Side Panels (if included)
The Cisco R-Series Racks may come with side panels installed. You may find it easier to remove the panels as you are unpacking the rack or before

RACK INSTALLATION Best Practice Guide

The steps below will ensure your installation promotes the best environment for your equipment; is compliant with facility rules; and, will not require adjustment or re-installation.



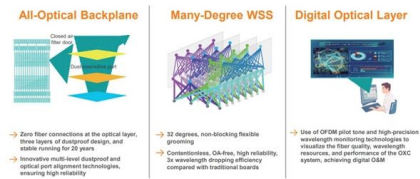
Network Rack Installation 101: Basics You Need to Know

Read the article to know the basics of network rack installation, from choosing the right rack type to cable management and maintenance tips.



Eaton RE Series IT Rack

This manual contains important instructions that you should follow during installation and maintenance of the RE Series Enclosure. Please read all instructions before operating the equipment and save this



Guidelines for Server Rack Organization

Without an effective rack cable management solution, the cables inside a server rack can quickly turn into a tangled mess, creating significant

Network Cabinet Cabling: Guide & Documentation Tips

The most important thing in brief: Network cabinet cabling describes the structured connection and arrangement of all IT components in a server rack. The aim is a secure, maintainable and scalable



25 Steps For Installing New Server Racks

Intimidated by all of the planning that goes into installing up a new server rack? Use this checklist as your guide.



Tips and Guide for Server Rack Cable Management

Due to rotation around its axis, rings are set in the desired position. Patch panels. The patch panel is one of the main components in the construction



Complete Guide to Patch Panels: Types, Benefits, and Installation Tips

Discover everything you need to know about patch panels, including different types, their benefits, and installation tips. Enhance your network efficiency with our comprehensive guide.

How to Setup a Server Rack: Tips and Tricks {Step-by

This article outlines the steps to setup a server rack and offers the tips and tricks for securely building the rack.



Easy Rack Side Panel Kits Installation

Date: 05 August 2021, Type: Instruction sheet
Languages: English, Version: 1.0 Document
Reference: 990-91530_EN Files Related products
Product Ranges: Easy Rack Create your
Schneider Electric



Rack Installation Guide

Do not place any objects on the top of the rack-mounted devices. Connect all power cords to properly wired and grounded electrical outlets. Do not overload the power outlet when installing multiple



How to Mount a Network Rack , Mount a Network Wall Cabinet , Easy

In this video I show you how I mounted a Tripp Lite SRW12US SmartRack 12U Wall Mount Rack Enclosure Cabinet. It has a nice wall plate that you can install so you don't have to struggle to get

Contact Us

For datasheets, pricing, or custom high-speed optical interconnect solutions, please visit:
<https://www.syropy.com.pl>