

National Standard Distribution Box Cover Plate





National Standard Distribution Box Cover Plate

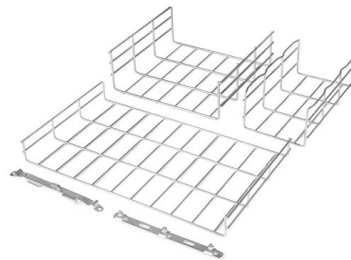


A Guide to Light Switch and Outlet Covers

A single-gang plate covers one device, a double-gang covers two devices side-by-side, and so on, dictating the width required to fit the electrical box opening. Understanding the type of

Distribution Box Guide: Types, Components & Solutions

Understand distribution boxes (DB boxes) in 5 minutes. Learn about types, components, functions, and uses. Find the perfect DB box for your needs.



OS 1

The publication has been promulgated with a view towards reducing the hazard to persons and property when boxes and covers conforming to these standards are properly selected and installed in

Faceplates & Boxes , Eaton

Need Help Finding Face Plates & Boxes? Tripp Lite presents a diverse line of face plates and boxes, including back boxes and surface-mount boxes, as well as distribution enclosures for protection.



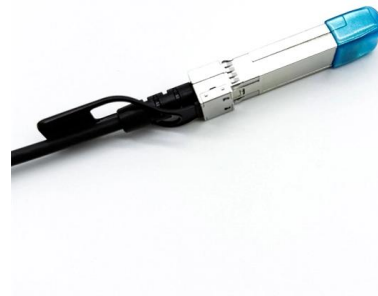
26 05 33.16 Boxes for Electrical Systems

National Electrical Manufacturers Association (NEMA) OS-1 Sheet-Steel Outlet Boxes, Device Boxes, Covers, and Box Supports FB-1Fittings, Cast Metal Boxes, and Conduit Bodies for Conduit, Electrical



OS 1

The National Electrical Manufacturers Association (NEMA) Standards and guideline publications, of which the document herein is one, are developed through a voluntary Standards development



Valve, Meter and Telecom Boxes with Durable Covers , NDS

NDS valve, meter, and telecom boxes with durable covers protect utilities. Sizes and colors fit water, sewer, electric, ICV, and telecom



How to Choose and Install a Junction Box Cover Plate



A junction box cover plate is a finishing barrier secured over an electrical junction box, which houses the splices and connections of electrical wiring. The primary function of this plate is



Title

1. Introduction This specification covers the manufacture, testing at works, user documentation, supply and delivery to Eskom's sites and off-loading of Optical Distribution Frames or Patch Panels/Boxes.

Cover Plates

Discover ARB's extensive range of cover plates for switches, sockets, and isolators, ensuring a neat and professional finish to your installations.

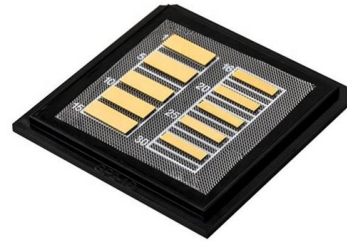


Order top Quality Plate Boxes and Cover Plate, Mate mart

Shop a variety of plate boxes, including Anchor and Legrand cover plates, modular switch cover plates, and stylish cover plates for every need. Buy plate now.



Distribution box Rubber Handy 6 Robust full rubber housing, impact resistant, oil-, UV- and acid resistant. Protected with a ground fault interrupter and circuit breaker. All protections covered by



CBP , Electrical box covers , Steel City , Boxes

Electrical box covers View Larger Representative Image Catalog No. : CBP



Electrical Box Covers

Metal Electrical Box Covers & Device Plates - Made in the USA Durable galvanized steel covers and device-mount plates, sized for standard 4" square metal-electric



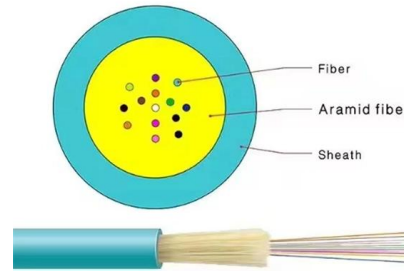
The installation requirements for the distribution box

Learn how to install a distribution box safely and correctly. Covers wiring, placement, standards, and expert tips for a compliant setup.



Amazon : Electrical Box Cover Plate

ENERLITES Blank Wall Plate Cover, Gloss Finish, Standard Size 1-Gang 4.50" x 2.76", Polycarbonate Thermoplastic, Electrical Covers for Unused Outlets/Switches, 8801-W-5PCS, White 5 Pack 1K+



The Best Solution to Install Components Inside The

What is the trickiest installation problem of components inside the distribution box? When we were installing circuit breakers and switches under

How to Properly Cover an Electrical Box

The National Electrical Code (NEC) makes a clear distinction between the types of electrical boxes that are considered permanently accessible and those that are finished with a



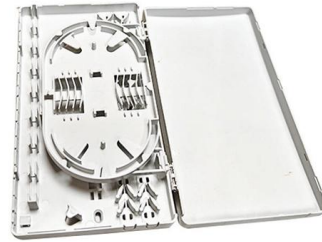
electrical distribution board cover installation

How Much Does It Cost to Replace an Electrical Distribution Board (DB) Box Cover? To replace an electrical distribution board (DB) box cover, it costs S\$109.00 to



Circuit Numbering and Labeling for Electrical Equipment

LLNL-MI-823076 This standard describes requirements for numbering and labeling of real property electrical distribution equipment, circuits, and site lighting at Lawrence Livermore National Laboratory.



Blank Electrical Box Covers

These covers fit and close existing boxes and covers to support electrical devices, such as switches or receptacles. Electricians and contractors use covers when installing electrical and wiring systems to

Blank Cover Plates , McMaster-Carr

Choose from our selection of blank cover plates, including blank covers for steel outlet boxes, blank wall plates, and more. Same and Next Day Delivery.



NEC Reference Metallic Boxes

Box and cover material and plating specification; .062" minimum thickness, hot rolled, pre-galvanized steel, minimum spangle. ASTM G-60-U, AISI C-1008



Mounting Plates

Different plates for different uses: Stainless steel: is used to protect and protect electronic components and prevent their manipulation. Galvanized: it is the most



TECHNICAL SPECIFICATION FOR LT DISTRIBUTION BOX

The materials covered under this Specification shall comply with the requirement of the latest version of the following standards as amended up to date, except where specified otherwise.

Valve, Meter and Telecom Boxes with Durable

NDS valve, meter, and telecom boxes with durable covers protect utilities. Sizes and colors fit water, sewer, electric, ICV, and telecom



Metal Board Accessories and Labels , YESSS Electrical

Metal Board Accessories provide the essential components needed to upgrade, adapt, and maintain metal consumer units and distribution boards. Designed for both residential and commercial



Identifying our equipment

These lids cover boxes which generally contain small customer connections. Previously the boxes and lids were made of concrete, but the current footway boxes are made of fibreglass and have steel lids.



Electrical

Cover plate receptacle labels shall indicate panel and circuit identification for all receptacles. In addition to receptacle labels, provide labels for fixed equipment at a visible location mounted on or near the

Distribution Boards

Distribution Boards NHP offers a range of distribution switchboards solutions, starting with compact pole covers and increasing to loadcentres right through to



Contact Us

For datasheets, pricing, or custom high-speed optical interconnect solutions, please visit:

<https://www.syropy.com.pl>