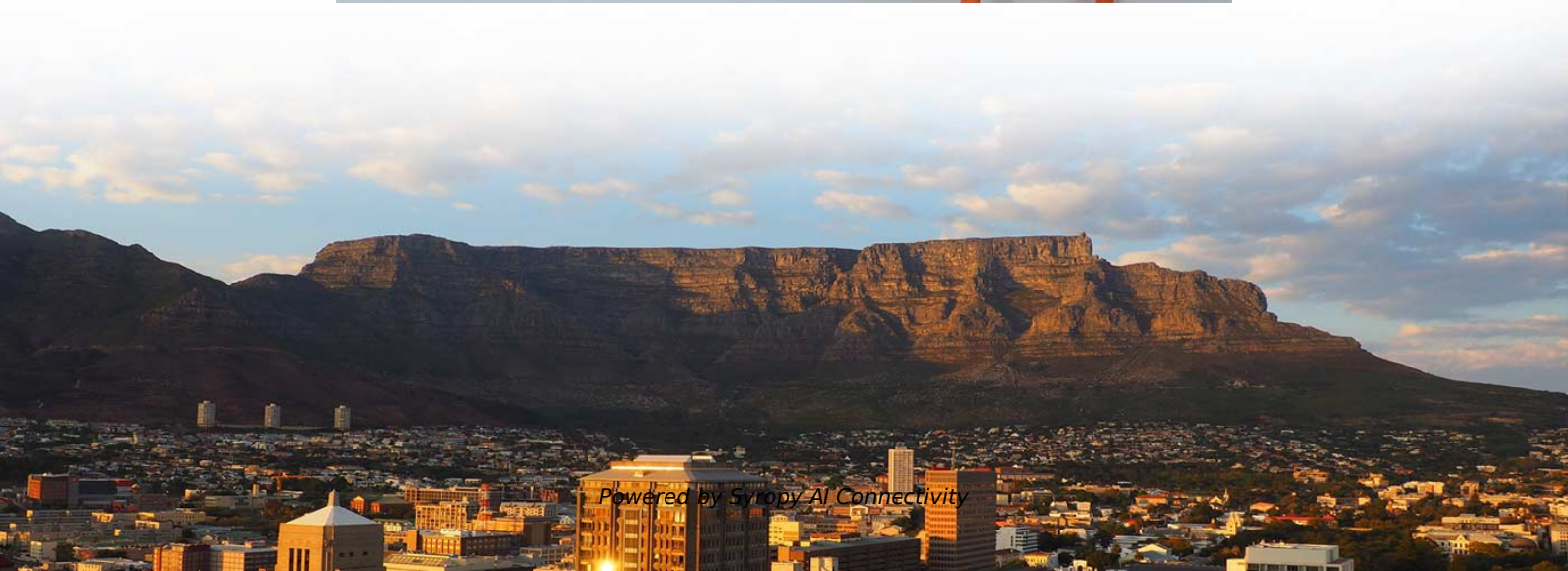


National Standard Cable Tray Support Arm





Overview

41x21mm horizontal support for wall fixing of cable trays, electrical conduits and other heating pipe installations, A/C, fire protection systems, etc. OBO BETTERMANN has offered products and solutions for electrical installation for over 100 years. Cable supports are manufactured according to common standards from high quality raw materials. With the RS 60 cable tray installation system, we offer you the last installation type of the standard support construction, so that you can implement all installations required in the building project with circuit integrity maintenance on the basis of the standard support construction. In addition to the cantilever arms listed, there are many other specialist support brackets for use with cable tray or cable ladder.



National Standard Cable Tray Support Arm

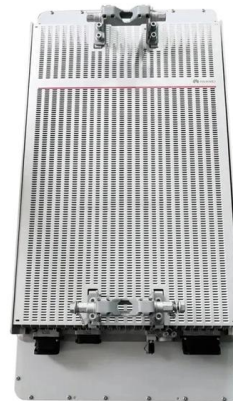


CABLE TRAY SYSTEM

Available for cable tray of widths from 50mm to 900mm, the Vantrunk tray arms have M10 clearance holes for fixing to the supports and M6 clearance holes to allow for fixing through the bed of the cable

Explaining NEC Article 392 on Cable Trays

NEC Article 392 explains cable trays, their components, appropriate wiring methods for cable trays, and instances where they are and are not



Miscellaneous support

When the mould is removed, the result is a strong, flexible support rail system encased in the concrete wall, ceiling or floor. The rail system can be used for

Document DICOS

The National Electrical Manufacturers Association (NEMA) Standards and guideline publications, of which the document herein is one, are developed through a voluntary Standards development



Standard Support Construction Of The Cable Tray RS

With the RS 60 cable tray installation system, we offer you the last installation type of the standard support construction, so that you can implement all installations



Best practice guide to cable ladder and cable tray

Cable ladder and cable tray systems The following recommendations are intended to be a practical guide to ensure the safe and proper installation of



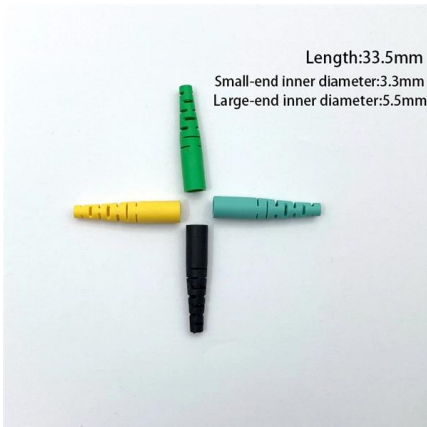
Cantilever Arms

These brackets are used to provide extra support to a horizontal run of channel. In addition to the cantilever arms listed, there are many other specialist support



Cantilever Arm 41x21

41x21mm horizontal support for wall fixing of cable trays, electrical conduits and other heating pipe installations, A/C, fire protection systems, etc. Excellent loading



Guide to cable support systems

The basis for the recommendation is not the standard load capacity of the brackets, as tested according to DIN-EN 61537, but rather the realistically occurring loads of a standard cable support system.

Codes and Standards , Cable Tray Institute

The Cable Tray Institute is making available the current edition of this practical guide for the proper installation of aluminum or steel cable tray systems. These guidelines will be useful to engineers,



CABLE TRAY

WARNING!--Do not use a cable tray as a walkway, ladder, or support for people; cable tray is a mechanical support system for cables and raceways. Using cable trays as walkways can cause

Best Practice Guide to Cable Ladder and



Cable Tray Systems

Introduction This publication is intended as a practical guide for the proper and safe* installation of cable ladder systems, cable tray systems, channel support systems and associated supports.



Cable Tray Technical Guide A practical guide to product selection and

SOLID-BOTTOM CABLE TRAY Providing additional cable protection, solid-bottom cable tray is sometimes preferred to support and protect numerous small instrumentation and control cables.

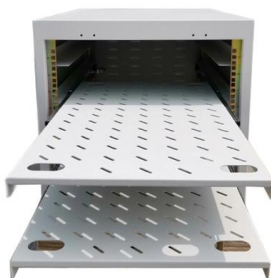
Best Practice Guide to Cable Ladder and Cable Tray Systems

This publication is intended as a practical guide for the proper and safe* installation of cable ladder systems, cable tray systems, channel support systems and associated supports.



Heavy Duty Cable Tray Cantilever Support Arm

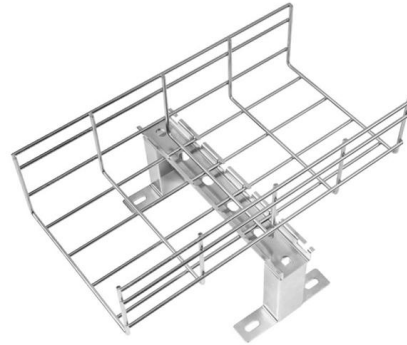
Professional-grade cantilever support arm specifically designed for cable tray installations. Features a welded flat mounting plate construction for secure





Cable Management Support Systems

Cable Support Systems are well designed to provide necessary support for cable trays, cable ladders and trunkings. Cable supports are manufactured according to common standards from high quality



Standard for Installing Metal Cable Tray Systems

Metal cable tray systems for power communications cabling shall be installed in accordance with NECA/NEMA 105, Standard for Installing Metal Cable Tray Systems (ANSI).

CABLE TRAY SYSTEMS GUIDE

Steel Ladder System Hubbell's NEXTFRAME® Ladder Tray is the effective and widely used cable runway that supports and delivers bundles of cable between cabinets, racks, and closets, along



Unistrut Cable Tray Support Structures

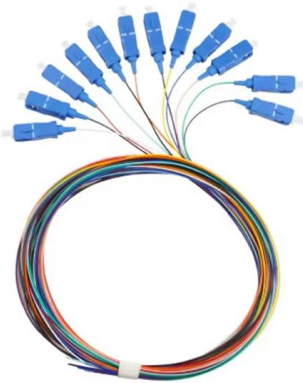
Cable Tray systems are often used to support electric power, signal, control, instrumentation, and communication cables used for power distribution and





Cable Tray Spacing Standards for Installation and Safety

National Electrical Code (NEC) Article 392 (USA): Provides comprehensive guidelines for cable trays, including fill capacity, support, and



RediRail master format 2004

Cable tray systems are defined to include, but are not limited to straight sections of single rail cable trays, fittings, drop-outs, supports and accessories.

Cable Support Systems, steel

Wide Span Systems Wide span cable trays and ladders, fittings, barrier strip, covers, accessories
Wide Span Cable Trays Wide Span Cable Ladders
Fittings Barrier Strips Covers System Accessories

02

High Quality Material

High hardness to resist external impact, Good Shaping Performance, Good Look and Anti-rust



5-INCH COLOR TOUCHSCREEN

Intuitive operation, easily accessible with just one touch



Industrial-grade CPU
sensitive response
1 second startup
Smooth experience

Cable Tray Width, Dimensions and Specifications as per

Learn about cable tray width dimensions and specifications as per NEC standards. Understand types, sizes, materials, and installation guidelines for safe and



Cable Trays and Accessories

Cable Trays and Accessories are designed to meet most requirements of cable and electrical wire installations and comply to local international standards of



Full cable tray systems specification document

B. Cable tray systems are defined to include, but are not limited to straight sections of [ladder type] [trough type] [solid bottom type] [channel type] cable trays, bends, tees, elbows, drop-outs, supports

The Standard for Cable Trays: How to Ensure Safe

Cable trays are essential components of electrical power and data communication systems that provide safe and reliable routing, support, and protection of cables



Cable tray manual

INTRODUCTION The B-Line series Cable Tray Manual was produced by our technical staff. We recognize the need for a complete cable tray reference source for electrical engineers and designers.

Cable Management Support Systems



Cable Management Support Systems Cable Support Systems are well designed to provide necessary support for cable trays, cable ladders and trunkings. Cable



A Guide to Installing and Supporting Electrical Cable Trays

A professional guide to installing electrical cable tray systems per NEC Article 392. Covers support, securing cables, and fill calculations.



Best Practice Guide to Cable Ladder and Cable Tray Systems

Introduction This publication is intended as a practical guide for the proper and safe* installation of cable ladder systems, cable tray systems, channel support systems and associated



Contact Us

For datasheets, pricing, or custom high-speed optical interconnect solutions, please visit:
<https://www.syropy.com.pl>