

Namibia s Export Optical Line Terminal DML





Overview

Namibia has started exporting green iron and plans to process manganese, lithium, and graphite locally. The project aligns with the EU's Global Gateway initiative for sustainable infrastructure investment. Namport Social Investment Fund (NSIF) Namport Port & Sycrolift Tariffs Booklet 2025-26 PE Board of Directors e-Recruitment Welcome to the Media center for Namport containing all the documents spread out all over the website. The EU and Port of Rotterdam will design a Green Minerals Terminal at Lüderitz's Angra Point. 2 of 1994, the Namibian Ports Authority (Namport) is a recognized public enterprise under the Public Enterprises Governance Act, No. The Port of Walvis Bay is strategically located halfway down Namibia's coast and provides an easy and fast shipping route between Southern Africa, Europe, the Far East, and the Americas.



Namibia's Export Optical Line Terminal DML

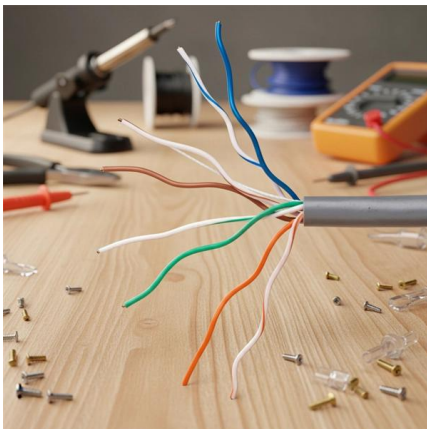


Welcome to the Port of Walvis Bay

The port is ideally situated to serve Southern Africa's landlocked countries with links to Namibia's air, rail and road networks. The port's main transport arteries are the

General Information on Import and Export Procedures

Namibia, being a member of the Southern African Customs Union (SACU) is obliged to apply a SACU -wide import and export management regime. All cross-border movement of goods are subject to a



US \$268m new container terminal launched at Walvis

The Namibia Port Authority (Namport) has launched its new US \$268m container terminal and cruise facility at Walvis Bay, built by China Harbour

Port of Rotterdam and European Union support development of critical

Plans are being developed to process these minerals locally, which will further strengthen Namibia's position in the global clean energy supply chain. Funding from the EU's Global



EU and Port of Rotterdam to Design Green Minerals

The terminal will handle exports of critical raw materials such as lithium, graphite, and manganese--resources central to Europe's clean energy



Namibian Ports Authority

Namport, operating as the National Port Authority in Namibia since 1994, manages both the Port of Walvis Bay and the Port of Lüderitz in Namibia.



NAMIBIA EXPORT IMPORT TRADE DATA

NAMIBIA EXPORT IMPORT TRADE DATA Namibia officially the Republic of Namibia, is a country in Southern Africa. Namibia western border is the Atlantic Ocean. Namibia shares land borders with





Namport and EU Partner with Port of Rotterdam for Lüderitz Green

Namibia has started exporting green iron and plans to process manganese, lithium, and graphite locally. The project aligns with the EU's Global Gateway initiative for sustainable

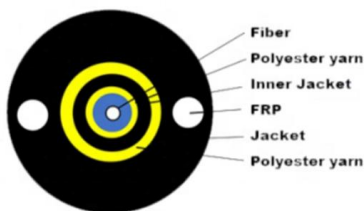


D Namibia Trade Statistics Bulletin

Namibia's trade composition by partner showed that Botswana emerged as Namibia's largest market for exports whereas South Africa maintained her position as the main source of imports. The

NAMIBIA STATE OF LOGISTICS 2018 REPORT

The liner shipping bilateral connectivity index (LSBCI) shows Namibia's integration level into global liner shipping networks (Figure 13), a vital part of the global supply chain for copper, wooden products and



Namibia

Namibia's principal port, Walvis Bay, is strategically located and supported by a network of well-maintained tarred roads that extend across Namibia into Angola, Botswana, South Africa,



Environmental Information Service Namibia , EIS: Choose option

Environmental Information Service Namibia , EIS: Choose option

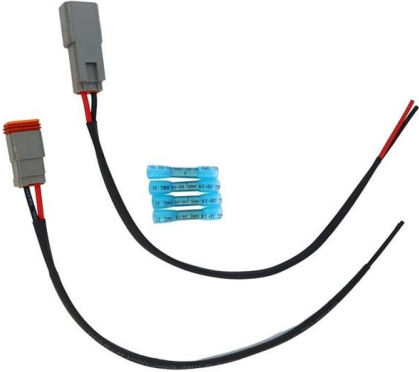


Namport to hand over new container terminal

The new container terminal, constructed at a cost of N\$4 billion, will be managed by Terminal Investment Namibia (TiN) from 1 October. TiN is a

Foreign trade figures of Namibia

Learn about the business environment of Namibia through key figures on international trade and main imports and exports of goods and services.



Namibia (NAM) Exports, Imports, and Trade Partners

The following section uses the most recent trade data from partners of Namibia, displaying Trade Value, which represents the total monetary value of traded



How to export from Namibia?

Explain the export methodology in Namibia. Information given here explains about step by step procedures that need to be finished with Namibia



Mesh door/glass door optional



Sp-601 glass door

Sp-602 mesh door

Terminal Investment Limited (TIL) wins bid to run container terminal in

Swiss-based container terminal operator Terminal Investment Limited (TIL) has been selected as the preferred bidder to run Namibia Ports Authority's (Namport) new container terminal. Namport CEO

Container terminal management talks almost complete

Africa-Press - Namibia. Negotiations for the management of the Port of Walvis Bay's new N\$4.2 billion container terminal seem to be nearing finality.



NAMPORT Terminal Investment Namibia JOINT PRESS STATEMENT BY NAMPORT & TERMINAL INVESTMENT NAMIBIA (TIN) 11 SEPTEMBER 2024, WALVIS BAY, NAMIBIA HANDOVER OF



Namibian Ports Authority

Namport, operating as the National Port Authority in Namibia since 1994, manages both the Port of Walvis Bay and the Port of Lüderitz in Namibia.



NAMIBIA STATE OF LOGISTICS 2018 REPORT

The first edition of Namibia State of Logistics (NSoL) report 2018 provides a comprehensive and the most up-to-date review of the status of

Documents and Downloads

Namport, operating as the National Port Authority in Namibia since 1994, manages both the Port of Walvis Bay and the Port of Lüderitz in Namibia.



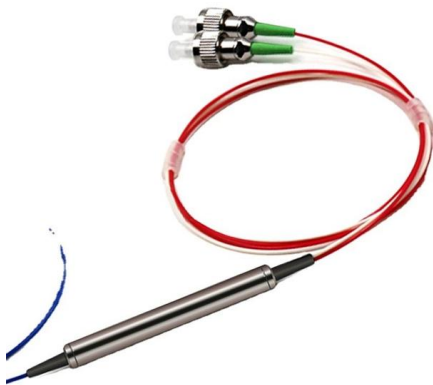
EU-NAMIBIA TRADE

ship that works. Trade between our regions has flourished since Namibia's independence, with European investments strengthening Namibia's private sector and creating jobs. This study was



Namibia Trade Summary 2020 , WITS , Text

Namibia top 5 Export and Import partners 2020
Top five countries to which Namibia exported in 2020 are below, along with the percent of total exports that went to that country: Namibia exports to China



At a glance: Namport Overview

Namport facilitates local and cross-border cargo imports and exports through four main trade corridors: the Trans-Kalahari, Walvis Bay-Ndola-Lubumbashi, Trans

Namibia Passive Optical LAN Market (2024-2030) , Share, Outlook

Market Forecast By Component (Optical Cables, Optical Line Terminal , Optical Splitter, Optical Network Terminal), By Type (GPON, EPON) And Competitive Landscape



Namibia Passive Optical Network (PON) Equipment Market (2025)

Historical Data and Forecast of Namibia Passive Optical Network (PON) Equipment Market Revenues & Volume By Optical Line Terminal (OLT) for the Period 2021- 2031



Trade Statistics

In October 2025, the country imported pesticides valued at N\$48 million, mostly sourced from South Africa and Spain. On the other hand, the country exported



Contact Us

For datasheets, pricing, or custom high-speed optical interconnect solutions, please visit:

<https://www.syropy.com.pl>