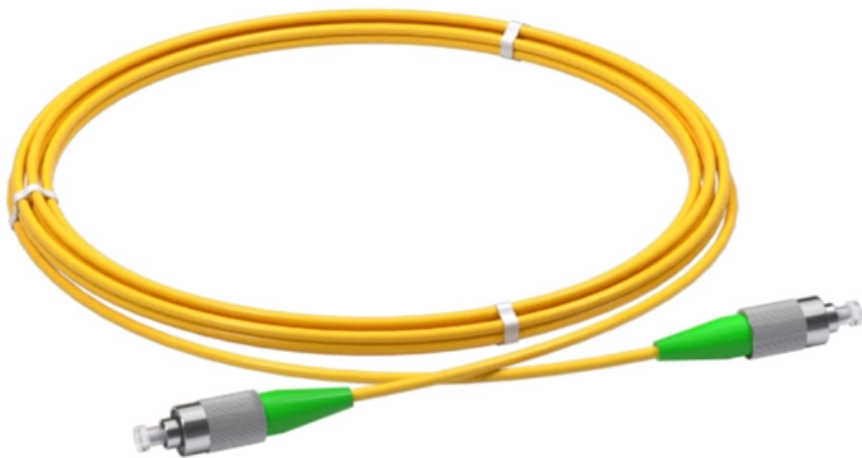
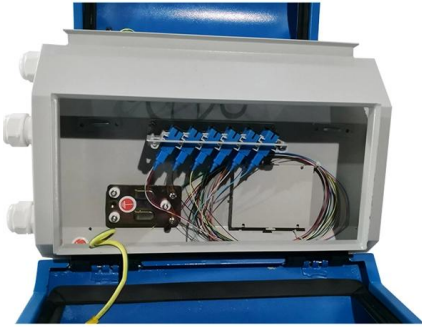


Nails for cable tray installation





Nails for cable tray installation

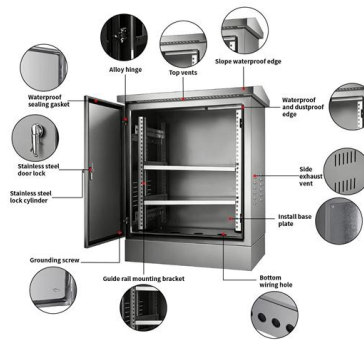


How To Install Cable Tray On Wall: A Step-By-Step Guide

Learn how to install a cable tray on a wall with this comprehensive guide. Step-by-step instructions, tools needed, and safety tips included.

CABLE TRAYS GENERAL INFORMATION AND

General information of Kiraç Metal Cable Trays and installation guide are arranged in accordance with IEC 61537 standards and this document has been prepared for

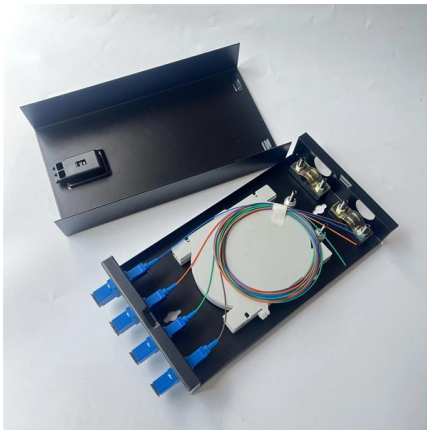


Mastering Cable Tray Installation , Step-by-Step Guide for a Seamless

Learn how to install cable trays correctly. Get the ultimate step-by-step guide on setting up a seamless and reliable cable management system.

Mounting instructions

Electrically trained specialists charged with installing cable support systems and cable trays. These instructions are based on the standards valid at the time of compilation (12/2023). Please read the

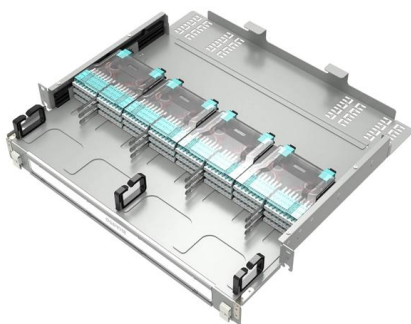


CABLE TRAY SYSTEMS GUIDE

Cable Tray Systems Guide HUBBELL Hubbell Wiring Device-Kellems and Hubbell Premise Wiring are divisions of Hubbell Incorporated, a U.S. headquartered manufacturer with over 130 years of

Kable Kontrol Cable Staple Nail Clips -- KABLE

Cable Nail Clips provide a clean, reliable solution for securing and organizing cables along walls, furniture, and floorboards. Designed for quick installation, each clip



Cable Tray Installation Guidelines

Addresses shipping, handling, storing and installing cable tray systems. Information on maintenance and system modification is also provided.



Fixings for electrical cables and other electrical

Approved metal anchors: concrete screws or female expansion anchors perfect for anchoring electrical cable trunking systems to different surfaces. Different coating



Metal Cable Tray Installation Guidelines , Cable Tray Institute

The Cable Tray Institute is making available the current edition of this practical guide for the proper installation of aluminum or steel cable tray systems. These guidelines will be useful to engineers,



Cable Tray Technical Guide A practical guide to product selection and

Cable tray length is selected based on the load to be supported, the distance between the supports (also referred to as the span), and handling and installation constraints.



DIY Installation: Mastering Light Duty Cable Tray Setup

Explore our comprehensive DIY guide to master the installation of light-duty cable trays. From planning to cable organization, follow step-by-step instructions for a tidy and efficient cable



Best Practice Guide to Cable Ladder and Cable Tray Systems

Introduction This publication is intended as a practical guide for the proper and safe* installation of cable ladder systems, cable tray systems, channel support systems and associated supports.

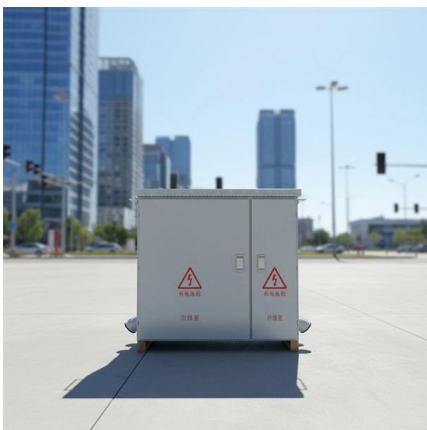


INSTALLATION GUIDE

Per NEMA V2, installing cover on outdoor cable tray systems is not common practice. Should they be required, proper attachment is required to protect them from the force of the wind.

Mastering The Art Of Installation Techniques For Cable Holding Nails

By mastering the techniques outlined above, you will have the knowledge and skills necessary for a successful cable holding nail installation. Remember to select the appropriate nails, adequately



Mastering Cable Tray Installation , Step-by-Step Guide for a Seamless

Mastering cable tray installation is crucial for creating a safe, organised, and efficient cable management system. By following this step-by-step guide, you can ensure a seamless setup that



Cable Tray and Conduit Installation Method Statement

Step-by-step cable tray and conduit installation method with safety, quality and inspection procedures as per IEEE standards.



Mounting instructions

1 About these instructions 1.1 Target group
These mounting instructions are intended for the following target group: Engineers and architects charged with the planning of cable support systems with cable

Best practice guide to cable ladder and cable tray

Cable ladder and cable tray systems The following recommendations are intended to be a practical guide to ensure the safe and proper installation of



Cable Tray Systems: Requirements and Best Practices

Comprehensive guide to cable tray systems requirements: tray types, materials, loading, supports, bonding, routing, and best practices for safe electrical cable management.



Cable Tray Installation Guidelines , PDF , Galvanization

This document provides details on installing cable trays and their support systems. It includes diagrams showing how to mount cable trays on walls using pre



INSTALLATION GUIDE

Center hung tray supports allow for quicker and easier cable installation by allowing cables to be deposited into tray systems from each side. There is a maximum load capacity per hanger of 318 kg

Cable Tray Installation

Whether you're building a commercial setup or upgrading an industrial plant, proper cable tray installation ensures neat wiring, safe access, and easy maintenance. But before you lay the first tray



Best Practice Guide to Cable Ladder and Cable Tray Systems

This publication is intended as a practical guide for the proper and safe* installation of cable ladder systems, cable tray systems, channel support systems and associated supports.



Contact Us

For datasheets, pricing, or custom high-speed optical interconnect solutions, please visit:

<https://www.syropy.com.pl>