

# **Myanmar ONT Optical Network Terminal 1G**





## Overview

---

The SNR-ONT-1G is comprised of one GPON uplink and Gigabit Ethernet downlink supporting 10/100/1000Base-T (RJ45). It helps service providers to extend their core optical network all the way to their subscribers, eliminating bandwidth bottlenecks in the last mile. Offering high performance, flexibility and reliability, the SDX 630 Series is built for a wide range of deployment scenarios. The ZXHN F401 is an EPON optical network terminal (ONU) designed by ZTE specifically for Fiber to the Home (FTTH). It apply in FTTH/FTTO to provide the data and video service based on the GPON network.



## Myanmar ONT Optical Network Terminal 1G

---

### Optical network terminals



Our next generation of multigigabit XGS-PON optical network terminals (ONTs) is here and ready to support the most bandwidth-intensive subscribers on your

### ZXHN F401 V6.0 EPON ONU , 1G Port FTTH Terminal

The ZXHN F401 is an EPON optical network terminal (ONU) designed by ZTE



### Optical network terminal unit (ONT) design resources , TI

View the TI Optical network terminal unit (ONT) block diagram, product recommendations, reference designs and start designing.



### Cisco 10G Routed PON ONT Data Sheet

These 10G optical network terminals for fiber-to-the-premises applications can be managed remotely and are interoperable with the Cisco Routed PON solution. Three models offer a



### What is Optical Network Terminals (ONT)?

Explore Optical Network Terminals (ONT), their functions, and how they support efficient, high-speed connectivity in modern fiber networks.

### A Quick Guide to ONT (Optical Network Terminal)

Understand how an Optical Network Terminal (known as an ONT) functions, how it differs from Optical Line Terminal (OLT), and its Role in



### Nokia ONT G-010G-A Quick Reference Guide

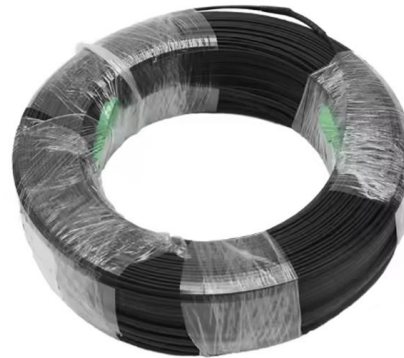
The ONT G-010G-A is suitable for indoor deployments and can be mounted on the desktop, wall or ceiling. The ONT supports a 1Gb/s upstream and 1Gb/s downstream line rate. It is compatible with





## What is an optical network terminal (ONT)?

What is an optical network terminal (ONT)? An optical network terminal (ONT) is a device that serves as the endpoint of an optical network,



### Data Sheet - SNR-ONT-1G

The SNR-ONT-1G is comprised of one GPON uplink and Gigabit Ethernet downlink supporting 10/100/1000Base-T (RJ45). It helps service providers to extend their core optical network all the way

## 6 Best Optical Network Terminals [2025 Bestseller]

Discover the 6 best optical network terminal modems from VSOL, offering high-speed connectivity, reliability, and advanced features for homes and



### Understanding ONTs: How They Work and Their Benefits

Learn about Optical Network Terminals (ONT), their role in fiber optic networks, and the benefits they offer for high-speed internet, voice, and TV services.



## ONT What is it and how is it used in a fiber network?

What Is an ONT? ONT stands for Optical Network Terminal. It's the device that: Connects directly to a fiber optic line run by your Internet provider  
Converts that

### Product Photography



## What is an Optical Network Terminal (ONT)? , Webopedia

The Optical Network Terminal (ONT) connects your home to fiber internet, converting light signals into usable data for high-speed, reliable

## TX-6610 , 1-Port Gigabit GPON Terminal

What This Product Does TP-LINK's TX-6610 is a next-generation Gigabit Passive Optical Network (GPON) terminal, ideal for Fiber to The Home solution. It's an incredibly robust device allowing users



## Optical Network Terminal (ONT) Units

Description An optical network terminal (ONT) unit is a device that connects fiber optics cables to other wiring such as Ethernet and phone lines by converting the signal from optical to electrical and vice



## Nokia ONT G-010G-R Quick Reference Guide

The Nokia Optical Network Terminal (ONT) G-010G-R is the answer for home networking delivered by Gigabit Passive Optical Network (GPON). It is designed to connect individual users to the network for



### OPTICAL NETWORK TERMINAL ONT

Optical network unit is used together with OLT in FTTH network, it provides data port, phone port and CATV port, 10/100M auto-negotiation, full bandwidth up to

### XPON Optical Network Terminal, Beam 1K00X - PPC Broadband

This ONT can act as a wire-speed L2 switch and L3 routing gateway with functions including port forwarding, NAT, NAPT, and PPPoE clients provide services. This model of ONT is equipped with



### GPON

GPON uses passive optical network (PON) is a fiber-optic access architecture in which a single optical fiber from a central location is shared by multiple end users through one or more passive optical



## Optical Network Terminal (ONT) Units

An optical network terminal (ONT) unit is a device that connects fiber optics cables to other wiring such as Ethernet and phone lines by converting the signal from optical to electrical and vice versa.



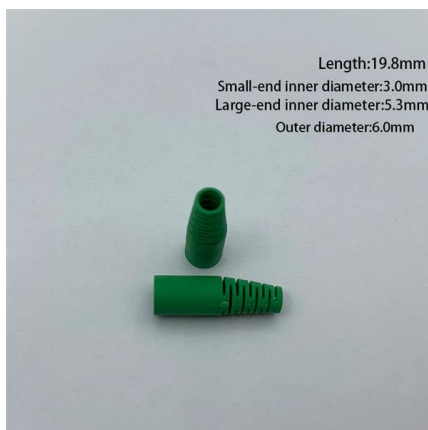
## What Is An ONT? - A Quick Guide

The Optical Network Terminal (ONT) is a cornerstone of contemporary fiber-optic communication networks. As the intermediary between

## Optical network terminals

Our optical network terminals (ONTs) are designed to address the market with industry-leading voice, data and video capabilities. They make it easier for

PRODUCT CATEGORY				
Open rack Series	Open rack	12U Open rack	18U Open rack	Adjustable Depth Open rack
Wall mount rack Series	Glass door Wall mount rack	Mesh door Wall mount rack	Double section Wall mount rack	Economic type Wall mount rack
Floor standing server rack	Glass door with casters	Mesh door with casters	42U Standard Server rack	Double open door Server rack
Outdoor cabinet	A/C conditioner Outdoor cabinet	Outdoor cabinet with plinth	Outdoor cabinet with fan cooling	Double Wall Outdoor cabinet
Splitter series	Bare Fiber Splitters	Blackless Fiber Splitters	ABS Splitter	Panor Splitters
Splitter series	LCX Splitters	Rack Mount Splitters	Mini Plug-in Type Splitter	Tray Splitters
Patch cord series	LC	SC	FC	ST
FTTH product series				



## ONT 1 Port Gbit PoE (IP30) , FiberLAN

The Nokia Optical Network Terminal (ONT) G-010P-A is designed to deliver gigabit speeds in an Optical LAN environment. The ONT provides a Gigabit Ethernet (GigE) user interface and delivers a



## 1GE GPON ONT Router modem FTTH Optical Network

Therefore, the BD-ONT-111-Z-B provides a perfect terminal solution and future-oriented service supporting capabilities for FTTH deployment. It has good third

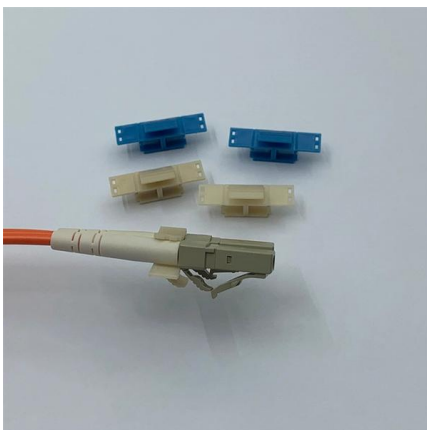


## What is ONU (Optical Network Unit)?

What is ONU? An ONU (Optical Network Unit) is a key device in Fiber-to-the-Home (FTTH) and other FTTx networks, operating within a Passive

## Exploring the Functions of GPON OLT and ONT in

Learn about the functions of GPON OLT and ONT in an optical line terminal network. Explore the roles they play in a gigabit passive optical network.



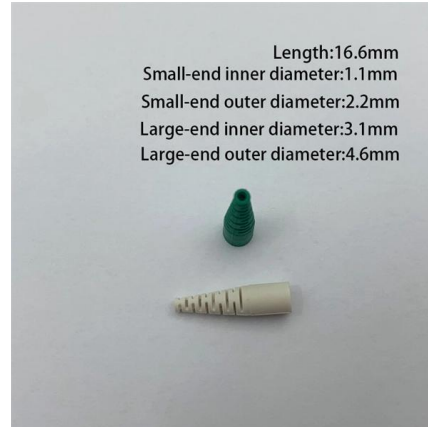
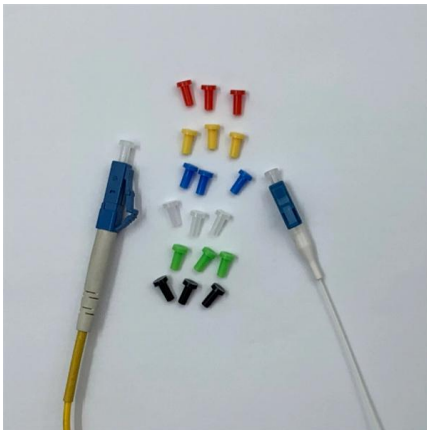
## 10G LAN XGS PON ONU & ONT OXG 99C

The OXG-99C is an Optical Network Terminal (ONT) equipped with XGS-PON technology, it supports 10Gbps speed for up/downlink, bringing the higher



## GPON OLT Basics and Beyond: A Comprehensive

In today's rapidly evolving optical networking landscape, GPON (Gigabit Passive Optical Network) technology stands as the mainstream solution

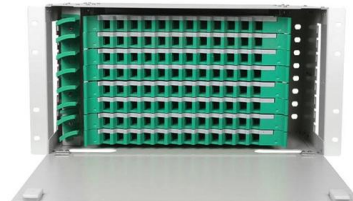


## Understanding GPON ONU: A Comprehensive Guide -

GPON ONU is a terminal device that converts optical signals into electrical signals, providing high-speed broadband connections with multiple service interfaces.

### NG XPON ONU G108 1G optical terminal

The new NG PON ONT GPON G108 1G subscriber terminal supports an asymmetric data transmission/reception rate up to 1 Gbps and is designed to work in both EPON and GPON networks



## Contact Us

For datasheets, pricing, or custom high-speed optical interconnect solutions, please visit:

<https://www.syropy.com.pl>