

Morocco RoHS Erbium-Doped Fiber Amplifier 100G





Morocco RoHS Erbium-Doped Fiber Amplifier 100G

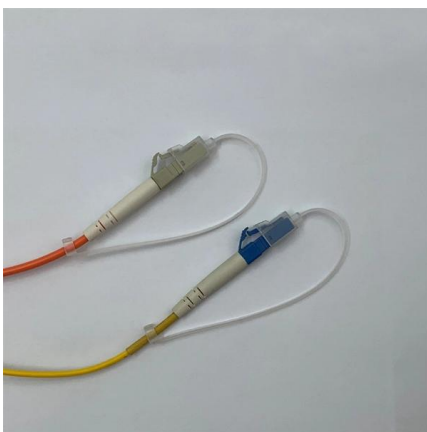


Datasheet

Fiber sensing Warning: High-power EDFA units are susceptible to damage from strong optical reflections, particularly those caused by improper connector mating. Agiltron's Erbium-Doped Fiber

Erbium Doped Fibers , Rare Earth Doped Optical Fibers

F-EDF erbium doped fibers provide the basic building block to fiber optic amplifiers used in broadband optical networks in the 1550 nm transmission window. These erbium doped fibers deliver gain

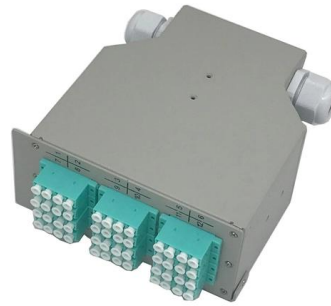


ERBIUM-DOPED FIBER AMPLIFIER

Erbium-Doped Fibre Amplifier (EDFA) High power Erbium-Doped Fiber Amplifier for signal power amplification in C and L bands with various control modes, including automatic gain control.

Performance of a High-Concentration Erbium-Doped Fiber Amplifier

The gain spectrum of the amplifier has a measured amplification bandwidth of 100 nm using a 980 nm laser diode with power of 150 mW. This silica-based EDFA shows lower noise figure,



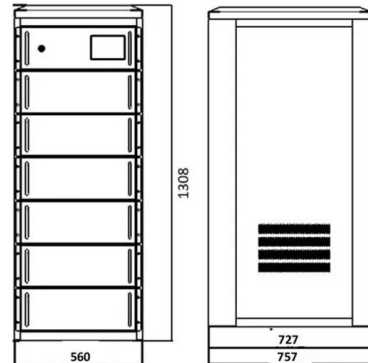
Doped Fiber Amplifier

A relatively recent advance in fiber optics is the development of the erbium-doped fiber amplifier (EDFA). A length of fiber with the element erbium added can act as an amplifier for light in



Optimizing Few-Mode Erbium-Doped Fiber Amplifiers for high-capacity

Within SDM systems, optical amplifiers are therefore critical to maintaining reliable, high-performance transmission across all spatial channels. Although erbium-doped fiber amplifiers



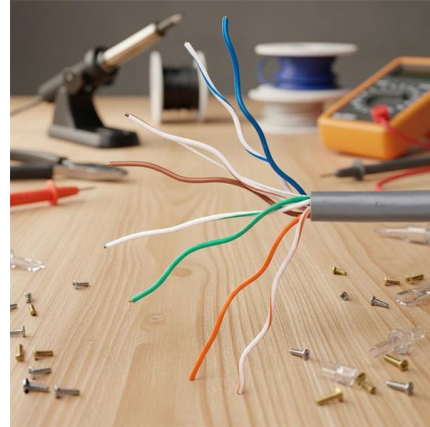
Erbium-Doped Fiber

Erbium doped fiber amplifier (EDFA) is defined as a crucial component in advanced wavelength division multiplexing (WDM) systems that provides optical gain over a wide wavelength range, typically



EDFA , Erbium-doped fiber amplifiers , NIR-SWIR

Shop our collection of EDFA erbium-doped fiber amplifiers: 1030-2054nm, -14 to +15dBm input, up to 40 W output. SLM narrow linewidth options. Browse at RPMC



Erbium-Doped Fiber Amplifiers (EDFAs): Foundations

Conclusion The erbium-doped fiber amplifier remains the cornerstone of optical communications, more than three decades after its invention. By directly

Doped Fiber Amplifier

18.5.2 Doped fiber amplifier When optical fibers are doped with rare-earth ions such as erbium, neodymium, or praseodymium, the loss spectrum of the fiber can be drastically modified. During the



Hier sollte eine Beschreibung angezeigt werden, diese Seite lässt dies jedoch nicht zu.



Erbium doped fibers , Exail

The amplification of optical transmission signals is enabled through our high efficiency erbium (Er) doped fibers. Our wide range of Er-doped optical fibers



EDFA (Erbium Doped Fiber Amplifier) - Physics and

EDFA (Erbium-Doped Fiber Amplifier) is an optical device used to compensate optical signal attenuation caused by fibers and components, to increase optical

Thorlabs

Thorlabs designs and manufactures components, instruments, and systems for the photonics industry. We provide a portfolio of over 22,000 stocked items, complimented by endless



A photonic integrated circuit-based erbium-doped amplifier

Abstract Erbium-doped fiber amplifiers revolutionized long-haul optical communications and laser technology. Erbium ions could provide a basis for



Erbium-Doped Fiber Amplifier (EDFA)

Erbium-Doped Fiber Amplifier (EDFA) is an optical amplifier used in the C-band and L-band, where loss of telecom optical fibers becomes lowest in



Erbium-Doped Fiber Amplifiers (EDFAs): Foundations

The combined beam passes through the erbium-doped fiber, where the signal is amplified through interaction with the excited erbium ions. The output

What is an Erbium-Doped Fiber Amplifier(EDFA) in

An Erbium-Doped Fiber Amplifier boosts optical signals in fiber networks, enabling long-distance communication with minimal loss and high



Compact and flat-gain fiber optical amplifier with Hafnia-Bismuth

For the first time, we demonstrated a compact Erbium-doped fiber amplifier (EDFA) using a newly developed Hafnia Bismuth Erbium co-doped fiber (HBEDF) as a gain medium. The HBEDF



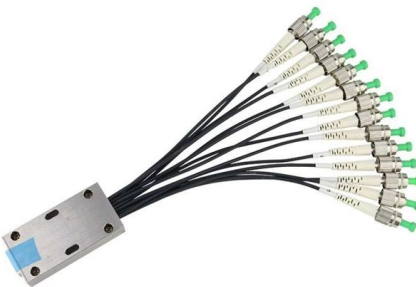
Erbium-Doped Fiber

An erbium-doped fiber amplifier is one of the most popular optical devices in modern optical communication systems as well as in fiber-optic instrumentation. EDFAs provide many advantages



Erbium-doped Fiber Amplifiers - Buying Guide & Suppliers

This erbium-doped fiber amplifiers buying guide provides technical background, comparison of major types, selection criteria, and an overview of suppliers.



Wall Mount Cabinet Server Racks



Erbium-doped Fiber Amplifiers (EDFA)

BaySpec supplies IntelliGain® series metro erbium-doped fiber amplifiers (EDFAs) designed for OEM integration into applications that require a high gain and a low



Optical Amplifier--EDFA (Erbium-doped Fiber Amplifier)

An Erbium-doped Fiber Amplifier (EDFA) is a device used to boost the strength of optical signals in fiber-optic communication systems. In EDFA in



Erbium-Doped Fiber Amplifiers (EDFA)

Thorlabs' core-pumped erbium-doped fiber amplifiers (EDFAs) provide high small signal gains and output powers in a compact, turnkey benchtop package or a plug-in PXIe module with FC/APC (2.0



Erbium-Doped Fiber Amplifiers (EDFA)

Each amplifier has a corresponding plug-in module that is designed to be operated in a PXIe chassis. These plug-in modules can operate in three modes, constant current, constant power, and constant

Erbium-Doped Fiber Amplifiers: Ultimate Guide

Discover the principles, applications, and benefits of Erbium-Doped Fiber Amplifiers in modern optics and telecommunications.



Erbium-doped Fiber Amplifiers

Erbium-doped fiber amplifiers are by far the most important fiber amplifiers in the context of long-range optical fiber communications; they can efficiently amplify light in the 1.5-um wavelength region, where



ERBIUM-DOPED FIBER AMPLIFIER

High output power Get up to 24.5 dBm amplified output power for all your high-power requirements. Simple, intuitive operation with CohesionUITM. CohesionUI makes it simple to control the instrument



Contact Us

For datasheets, pricing, or custom high-speed optical interconnect solutions, please visit:
<https://www.syropy.com.pl>