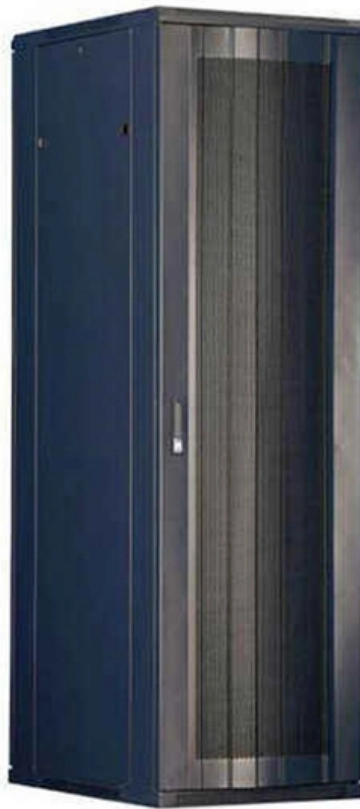
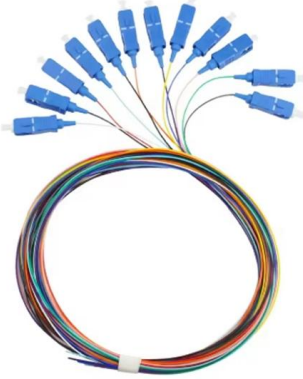


Monaco ONT Optical Network Terminal LPO





Monaco ONT Optical Network Terminal LPO



Optical Network Terminal explained , Pysmian

How does ONT work? The optical signal from the service provider's fibre optic network is received by the ONT and it translates the optical signals into data that

Optical Network Terminals Selection Guide: Types,

Optical network terminals (ONTs) are essential endpoint devices in fiber-optic communication systems, responsible for converting optical signals from fiber

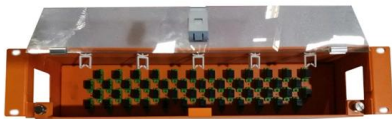
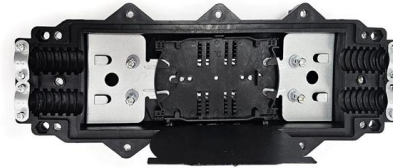


Optical network terminals (ONTs)

An optical network terminal (ONT) is a device used to "convert" the signals from the fiber network into a technology that end-users can use to connect their devices, like laptops, tablets, smartphones,

Full Guide of PON: OLT, ONT, ONU, ODN and other

This article will introduce the basic knowledge of PON, mainly involving OLT, ONT, ONU, ODN, and other basic components and related



What is ONT? Everything You Need to Know

ONT, short for Optical Network Terminal, is a vital component in fiber-optic communication systems. It acts as the endpoint device in a fiber-to-the-premises (FTTP) setup, translating optical

Optical Network Terminal(ONT)& Optical Network Unit (ONU)

FS provides Optical Network Terminal(ONT)& Optical Network Unit (ONU) XGSPON,GPON,EPON,XPON,XGPON (Free & Fast Delivery, Expert Tech Support, Outstanding



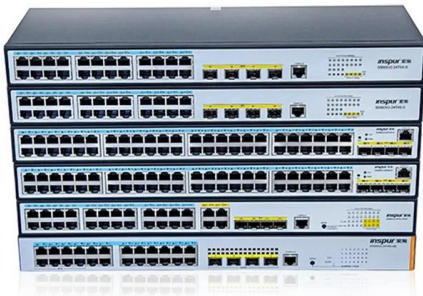
What Is an Optical Network Terminal?

Understanding the Role of the Optical Network Terminal The modern digital landscape relies on fast, reliable internet. Fiber optic technology is at the forefront of delivering this speed and

Optical network terminals (ONTs)



White paper An optical network terminal (ONT) is a device used to "convert" the signals from the fiber network into a technology that end-users can use to connect their devices, like laptops, tablets,



What is ONT? The Engineer's Guide to Optical Terminals

What is ONT and how does it work? Learn the engineering reality behind the Optical Network Terminal, ONT cables, photoelectric conversion, and LOS troubleshooting.

Optical network terminals

Our next generation of multigigabit XGS-PON optical network terminals (ONTs) is here and ready to support the most bandwidth-intensive subscribers on your



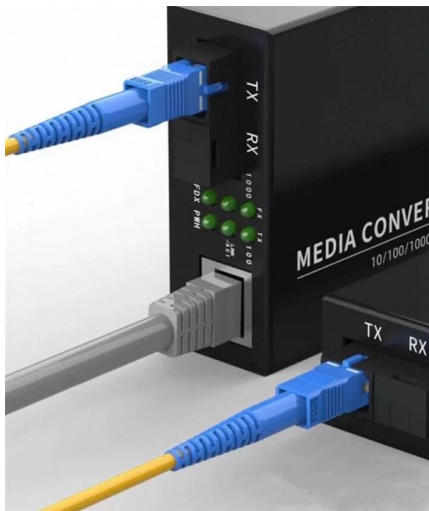
Optical Network Terminal (ONT) Units

These innovative, efficient components provide everything you need to reliably and safely power an ONT unit. Because our devices are optimized for low standby power and high power density in small



What Is An ONT? - A Quick Guide

The Optical Network Terminal (ONT) is a cornerstone of contemporary fiber-optic communication networks. As the intermediary between



GPON OLT and ONT Functions in Optical Line Terminal

It communicates with multiple ONTs (Optical Network Terminals), managing and controlling the entire PON network, and forwarding signals from

What is an optical network terminal (ONT)?

An optical network terminal is a device that connects a customer's premises to an optical network. Learn all about ONTs, how they work, and why



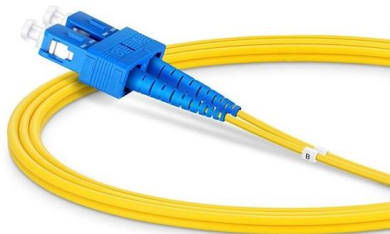
ONT

Der Optical Network Termination, kurz ONT, bildet in einem Glasfasernetz den teilnehmerseitigen Abschluss an einer Glasfaser. Der Glasfaser-Anschluss (GF-TA) wird per Glasfaser-Patchkabel mit



What is an Optical Network Terminal?

An optical network terminal, sometimes also known as an optical network unit, is a device utilised for optical fibre-based telecommunications.



GPON OLT Basics and Beyond: A Comprehensive Introduction

In today's rapidly evolving optical networking landscape, GPON (Gigabit Passive Optical Network) technology stands as the mainstream solution for delivering fast, stable, and high-capacity

What Is an ONT? Optical Network Terminals Explained I

An ONT (or optical network terminal) has a pivotal role in a fiber internet system. How exactly does it work? We explain in this guide.



Understanding GPON ONU: A Comprehensive Guide -

GPON ONU is a terminal device that converts optical signals into electrical signals, providing high-speed broadband connections with multiple service interfaces.



ONT What is it and how is it used in a fiber network?

What Is an ONT? ONT stands for Optical Network Terminal. It's the device that: Connects directly to a fiber optic line run by your Internet provider Converts that



Optical Terminal

The OptiXstar product series extends optical connectivity to every home, enterprise, and campus, bringing families closer and making enterprise operations far more

PON Network Components Overview: OLT, ONU, ONT,

This article will introduce passive optical networks (PON), in which we will introduce everything about OLTs, ONTs, ONUs, and ODNs, including their



What is GPON ONU(ONT) and GPON OLT?

1. What is GPON ONU (ONT)? A GPON ONU, commonly called an ONT (Optical Network Terminal), is the device installed at the user's premises. It



Monaco Passive Optical Network Equipment Market (2025-2031)

Monaco Passive Optical Network Equipment Market is expected to grow during 2025-2031

SUPPORTS DIN RAIL INSTALLATION



Optical network terminals

Our optical network terminals (ONTs) are designed to address the market with industry-leading voice, data and video capabilities. They make it easier for



How to hook up to the OpenNet Fibre Broadband

Once that is done, Nucleus Connect, the OpCo will install a box as shown in the picture below (left hand side). This box is known as the Optical



What is an Optical Network Terminal (ONT)? Your

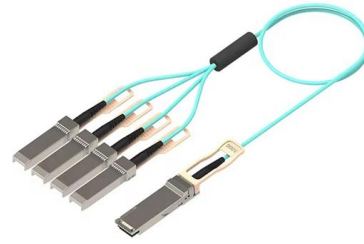
An ONT connects your home to fiber-optic internet by converting light signals into digital data for your devices, enabling fast and reliable service.





What is an Optical Terminal Network and Why Do I

Learn how an Optical Network Terminal -- also known as an ONT -- plays a vital role in providing fiber optic service to your home.



Exploring the Functions of GPON OLT and ONT in

Learn about the functions of GPON OLT and ONT in an optical line terminal network. Explore the roles they play in a gigabit passive optical network.

Learn about the fiber-optic ONT , Ziplly Fiber

The Optical Terminal Network (ONT) is a crucial component that makes fiber-optic internet work seamlessly. Learn about the ONT's role in delivering fiber



Contact Us

For datasheets, pricing, or custom high-speed optical interconnect solutions, please visit:
<https://www.syropy.com.pl>