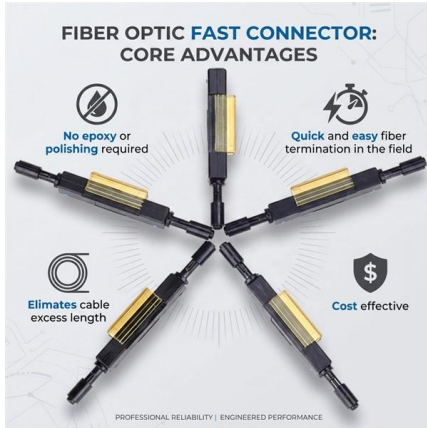


# **Modifying the pulse high beam module**





## Modifying the pulse high beam module

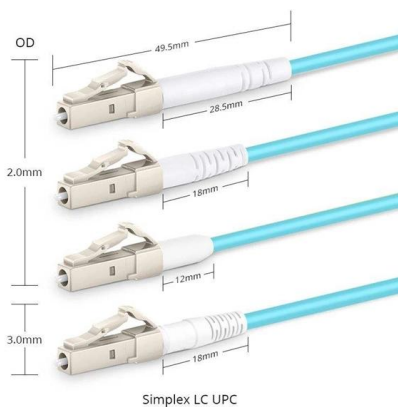
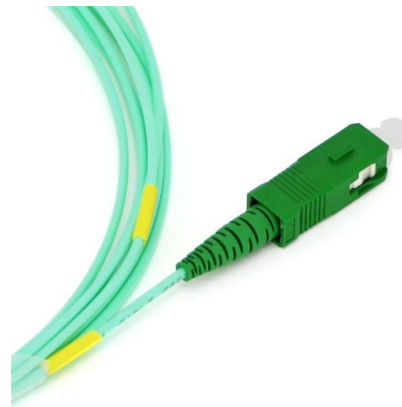


### Modifying Surfaces Using Intense, Pulsed Ion Beams

Introduction Recent advances in high average power, pulsed ion beam systems are enabling a new technology to achieve rapid melt and resolidification of surfaces. Researchers at Sandia National

### High-Voltage Pulsed Power Generator for Beam

This paper presents a novel high-voltage pulse power generator utilizing a distributed pulser architecture.

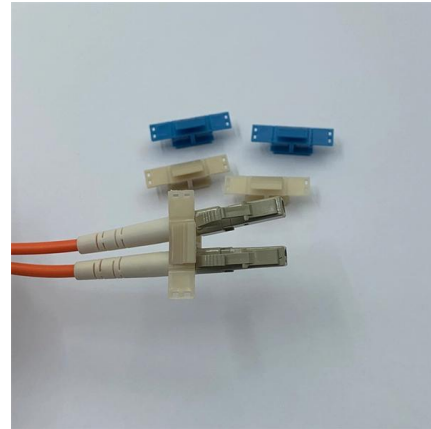


### The electronic modules used by the beam pulse monitor

The electronic modules used by the beam pulse monitor system. From left to right: high voltage supply for the BaF2 detector (Ortec 556), time-to-analog converter

### Pulsed RF Sources

A pulsed RF signal is periodic in that it has two distinct and recurring states; the on state state provides a stable medium or high power signal, the off state has much



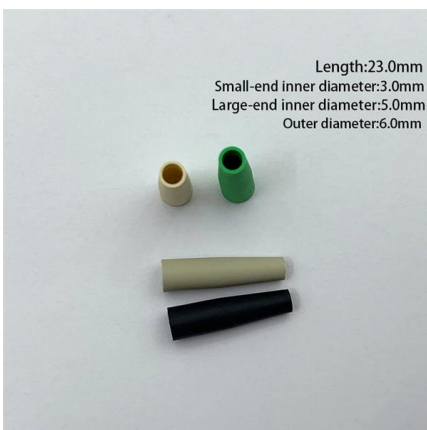
### BEAM QUALITY OF PULSED HIGH POWER CO2-LASERS

For average power repetition rate scaling effects are independent of pulse length. How much power can we gain by scaling the repetition rate? By scaling the repetition rate and simultaneously going to



### Frontiers , Beam control system and output fine-tuning

For UHDR delivery, an optocoupler facilitates external control of the accelerator's thyatron trigger pulses. A beam tuning process was established to



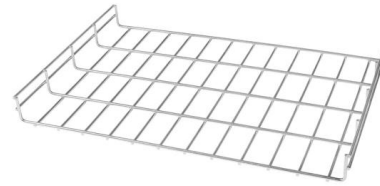
### Modifying a clinical linear accelerator for delivery of ultra-high dose

The aim of this work was to modify a conventional clinical linac, enabling the delivery of electron beams with dose rates high enough for FLASH-RT that can be controlled on electron pulse level, with a



### Highbeam 50% DRL mod, completed

What this mod does is run the two 9005 halogen bulbs used for the high beams at reduced power (approximately half power) like almost all of the cars sold with oem DRL lights.



### High-Intensity Implantation With an Ion Beam's Energy Impact on

This article describes a new method of modifying the properties of materials based on synergistic ion implantation and repetitively pulsed energy impact on the materials' microstructures

### A pulse power modulator system for commercial high

The ion beam surface treatment (IBEST™) process utilizes high energy pulsed ion beams to deposit energy onto the surface of a



### How Tunable Lasers Are Enabling High-Speed

Learn about tunable laser sources and the breakthroughs they allow in high-speed communication networks, high-power photonics, and scientific



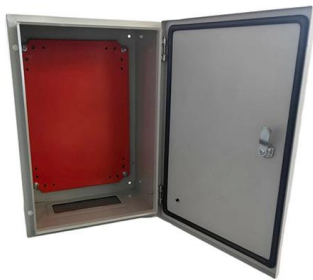
## Modulation

Nevertheless, in applications where intricate adjustments are required, such as in interferometers and pulse generators, external modulation proves indispensable.



### H4/9003 High Beam Light Fix Module

Designed - We have designed and produced these polarity canceller modules in-house to create a simple plug-and-play solution for all vehicles using an industry



### Pulse Engine Upgrade

Pulse Engine Upgrades, contained within Pulse Engine Modules, are procedurally generated upgrades granting bonuses to the in-system movement of



### 10MHz High-Power Pulse Generator on Boost Module

In this paper, a pulse generator based on the combination of the Blumlein pulse forming line and the boost method is proposed.





### High-energy, high-beam-quality, narrow-linewidth, nanosecond-pulsed

Our research shows that the SBS-induced pulse shaping can tailor the pulse shape during amplification of pulse energy. In the experiment, a nanosecond pulse amplifier was constructed



### Beam control system and output fine-tuning for safe and precise

Materials and Methods: The beam control system is designed to interrupt the beam based on 1) a preset number of monitor units (MUs) measured by a monitor detector, 2) a preset number of pulses



### Pulse Width Modulation (PWM): Working, Applications,

Explore Pulse Width Modulation (PWM) in microcontrollers: its operation, diverse applications, and significant benefits in embedded systems for efficient device



### OVERVIEW ON NEW HIGH VOLTAGE PULSE MODULATORS IN THE

Abstract Over the last 50 years, the technology of high voltage pulse modulators has undergone remarkable improvements thanks to the use of new semiconductor devices, high integration control





### High Beam Assist Module 20 (Low Line) Coding

I have been trying to find some instructions on how to code lowline module 20 HBA in the hope I can deactivate mine permanently as the control



### Looking for a pulse modifying module : r/arduino

I am looking for a module that can simply take an input pulse, and if it is above a given threshold, output a logic pulse with a time and a voltage long enough for the Uno to resolve. I'm sure these modules

### Modifying Surfaces Using Intense, Pulsed Ion Beams

beam systems are enabling a new technology to achieve rapid melt and resolidification of surfaces. Researchers at Sandia National Laboratories and Cornell University have developed the capability to



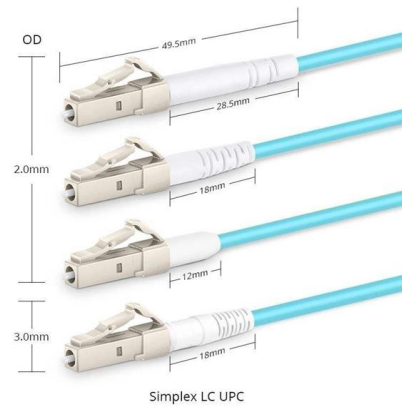
### (PDF) Developments of Pulsed Electron Beam Sources

Abstract and Figures High-current pulsed electron beam sources are the core components of high-power microwave systems.



## High Voltage Modulators

EHT modulators are designed to generate precision high voltage pulses for tube and grid driving applications. These units can respond to changing load on fast



## Application of high-current pulsed electron beams for modifying the

Experimental data on the influence of irradiation by high-current pulsed electron beams (HCPBs) on the physicochemical state of surface layers and operational properties of the blades of

## Pulse Engine Upgrade

Pulse Engine Upgrades are starship upgrades. Pulse Engine Upgrades, contained within Pulse Engine Modules, are procedurally generated upgrades granting bonuses to the in-system movement of a



## Modifying a clinical linear accelerator for delivery of ultra-high dose

The aim of this work was to modify a conventional clinical linac, enabling the delivery of electron beams with dose rates high enough for FLASH-RT that can be controlled on electron pulse



## Prototype Pulse Power Modulator

The transmission line based topologies have the advantage of higher voltages and faster rise times while the solid state modulators have the advantage of varying the pulse parameters namely the



## Frontiers , Beam control system and output fine-tuning for safe and

To enhance reliability in future clinical FLASH radiotherapy trials, the aim of this study was to introduce and evaluate an upgraded beam control system and beam tuning process for safe

## DIY Install/Enable Automatic High Beams

Limited with Auto High Beams: Auto High Beam Module Location: ECC\_AHBM I can collect the BCM settings related to auto high beams from the



## Contact Us

---

For datasheets, pricing, or custom high-speed optical interconnect solutions, please visit:  
<https://www.syropy.com.pl>