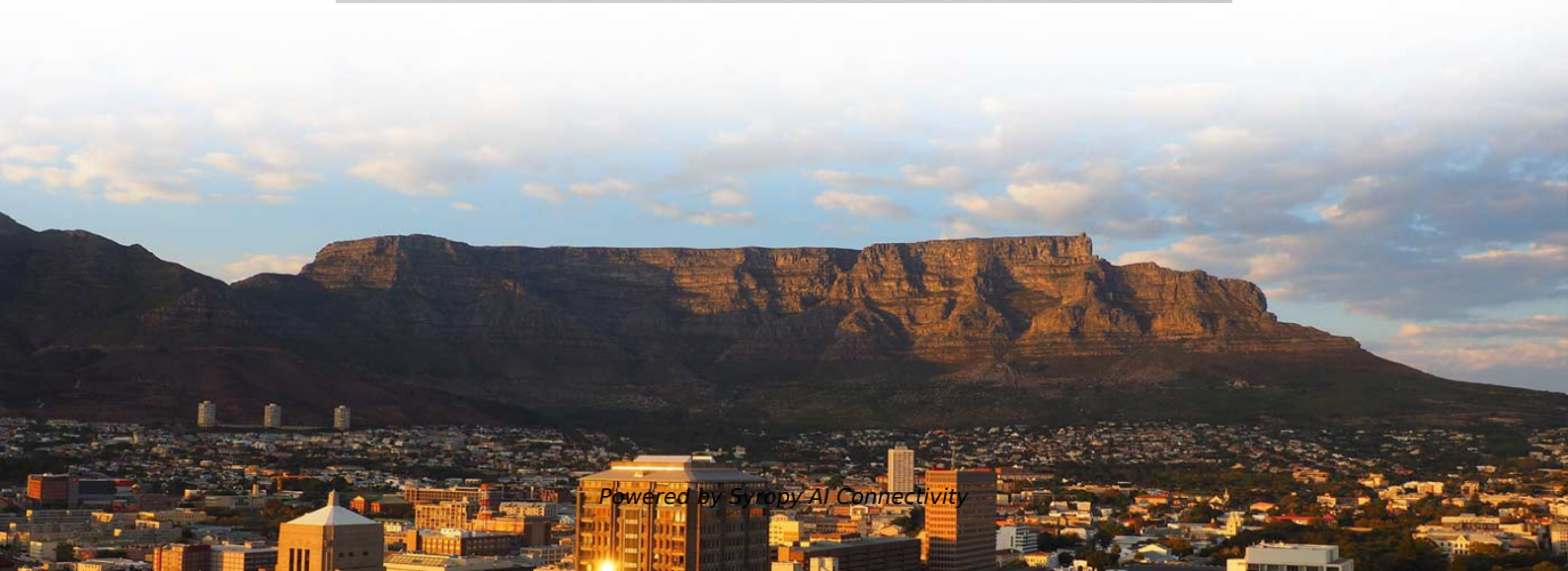
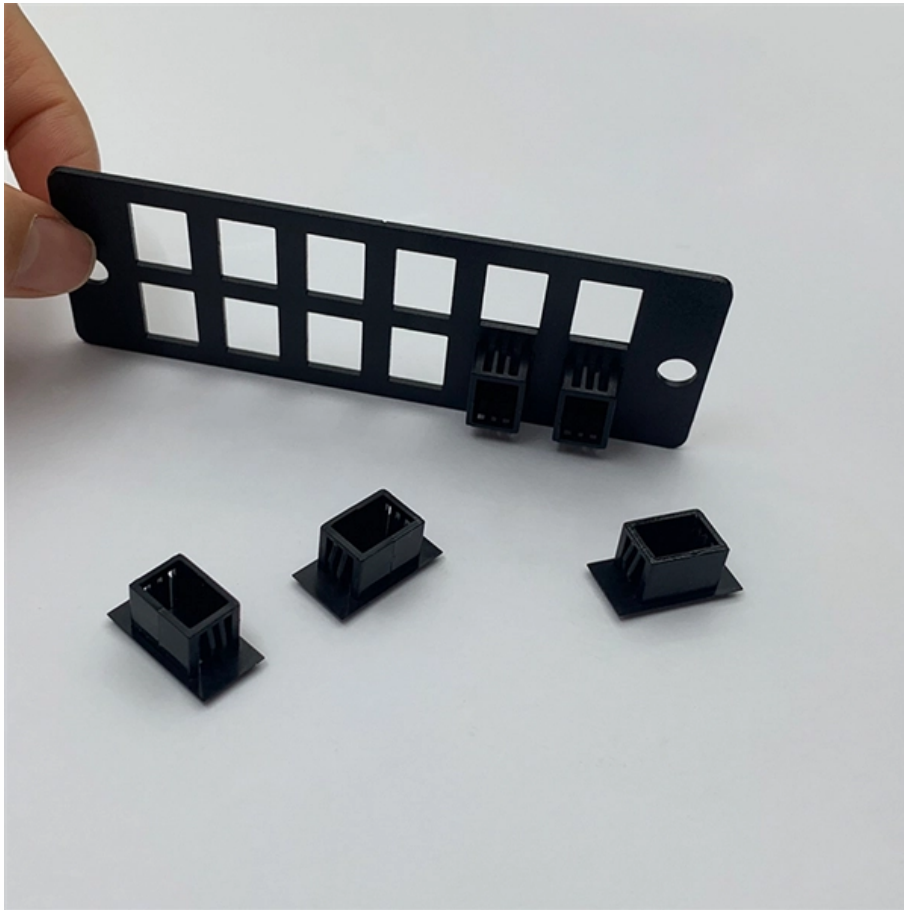


Mobile Communication Base Station Tower





Overview

According to documents leaked to Der Spiegel, the NSA sells a \$40,000 "active GSM base station" to be used as a tool to mimic a mobile phone tower and thus monitor cell phones. In November 2014, The Wall Street Journal reported that the Technical Operations Group of the U. Component typeCellular telephone siteFirst produced20th centurySummaryA cell site, cell phone tower, cell base tower, or cellular is a -enabled site where and electronic communications equipment are placed (typically on a, or other rai. A is a network of handheld (cell phones) in which each phone communicates with the by through a local antenna at a cellular base station (cell site).



Mobile Communication Base Station Tower



BTS (base station transceiver)

BTS, or Base Station Transceiver, is a critical component in modern mobile communication networks. BTS is responsible for transmitting and

What Is a Telecom Base Station and How Does It Work?

A base station (BS)--short for Base Transceiver Station--is a core component of a mobile communication network. It serves as the interface between mobile devices



and



Mobile base station

Explore STMicroelectronics' mobile base station solutions, enhancing connectivity and performance for telecom networks.

Mobile Base Stations: Cells, Sectors, Carriers Explained

Mounted on the tower are many antenna faces that belong to one or more base stations. A complete 4G base station typically consists of BBU, RRU,



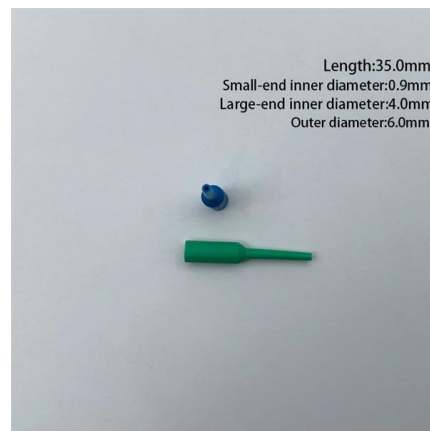
Base Transceiver Station: Core Functionality Explained

Discover what a Base Transceiver Station is and how it's pivotal in mobile communication networks. Unlock the essentials of BTS functionality here.



Understanding Base Transceiver Stations: The Backbone of Mobile

Simply put, a base transceiver station (BTS) is a vital component of mobile networks, serving as the communication hub that connects your mobile phone to the wider network. These



What is a Base Station in Telecommunications?

What is a Base Station? A base station is a critical component in a telecommunications network. A fixed transceiver that acts as the central





How Telecom Towers Work & The Key Benefits to UK

What are telecom towers? Telecom (cell) towers, also known as cell sites, base stations or masts (depending on where you are located) are tall structures

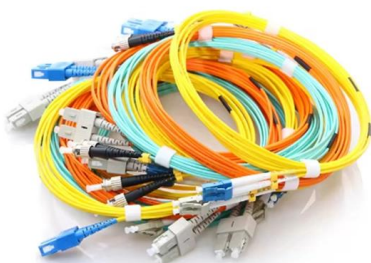


Types of Base Stations

Unlike base stations, which deal with direct communications between mobile devices and towers, Mobile Switching Centers (MSCs) oversee the routing

Base transceiver station

A base transceiver station (BTS) or a baseband unit (BBU) is a piece of equipment that facilitates wireless communication between user equipment (UE) and a network.



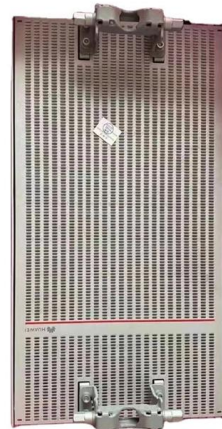
Base Transceiver Station

A base transceiver station (BTS) is defined as a network component that serves one cell within a base station system, which is part of a hierarchical structure for communicating with mobile terminals in a

What Is a Cell Tower and How Does a Cell Tower



What is a Cell Tower? A cell tower, also known as a cellular base station, is a critical component of the mobile communication infrastructure. It is a



Understand Cellphone Basestation Technology »

Tower: In order to raise the antennas to a sufficient height to gain the coverage required, the traditional approach is to use a tower, although the base stations



Base transceiver station

A base transceiver station (BTS) or a baseband unit (BBU) is a piece of equipment that facilitates wireless communication between user equipment (UE) and a network. UEs are devices like mobile



Base Stations and Cell Towers: The Pillars of Mobile Connectivity

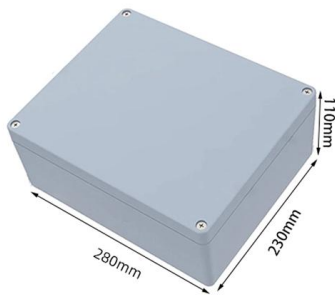
Base stations use antennas mounted on cell towers to send and receive radio signals to and from mobile devices within their coverage area. This communication enables users to make





How a 5G cell tower works , Deutschland spricht über 5G

These base stations generate the radio signals that ultimately constitute the cell. This is the only way to make sure transmissions from neighbouring network cells do

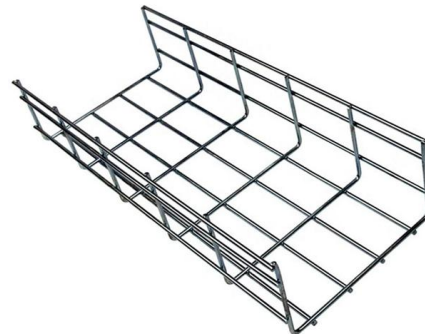


Understanding Base Stations in Mobile Communication

Explore the essential role of base stations in mobile communications. Understand their design, technology, and the shift to 5G ?. Discover the future impact and

Cell Tower Components: Antennas vs. Base Stations Explained

Before exploring antennas and base stations, let's briefly review what a cell tower is. Essentially, these structures facilitate wireless communication by transmitting and receiving radio signals.



Understanding the Basics of a Base Transceiver Station

The base transceiver station, commonly referred to as the BTS, is a fundamental component in modern telecommunications networks. Understanding the basics of a base transceiver



How Cell Towers Work to Keep Your Networks

Cell towers consist of various components such as antennas, base transceiver stations, masts, and ground-based equipment, enabling efficient



Cellular Base Stations

The base station, a wireless system, uses microwave radio communication. It is composed of several antennas mounted on a tower and a building with electronics in it at the base.

Understanding Base Station, Cell, and Sector Relationships

A base station is the outdoor tower or pole with mounted equipment and an equipment room, and can be classified as a macro site, microcell site, or indoor distributed antenna system (DAS).



Base Transceiver Stations (BTS)

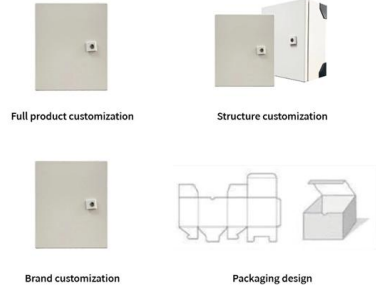
In the world of wireless communication, Base Transceiver Stations (BTS) play a crucial role in ensuring seamless connectivity, especially within buildings. Shared



Base Stations

The present-day tele-space is incomplete without the base stations as these constitute an important part of the modern-day scheme of wireless

OEM/ODM CUSTOMIZATION AVAILABLE



What Is A Base Station?

In summary, the base station is the active component responsible for network communication, while the tower is the physical structure that supports

Contact Us

For datasheets, pricing, or custom high-speed optical interconnect solutions, please visit:
<https://www.syropy.com.pl>