

# **Methods for wall-mounting electrical distribution boxes**





## Methods for wall-mounting electrical distribution boxes

---



### Mounting Electrical Enclosures , Education Series , RSP

But more specifically, we want to talk about some common methods that are used when mounting smaller and medium sized enclosures to either a wall or pole or

### Wall-Mounted vs. Floor-Mounted Distribution Boxes:

Compare wall-mounted vs. floor-mounted distribution boxes. Learn their key differences, uses, pros & cons to choose the right one for your space



### Power Distribution Equipment

Introduction Power Distribution Equipment is a term generally used to describe any apparatus used for the generation, transmission, distribution, or control of electrical energy. This section concentrates

### Wall-Mount Electrical Boxes , McMaster-Carr

Choose from our selection of wall-mount electrical boxes, including indoor enclosures, oil-resistant enclosures, and more. Same and Next Day Delivery.



### **Understanding Distribution Boxes: A Comprehensive Guide**

Learn what a distribution box is, its types, and how to choose the right one for your project. Includes clear examples and expert tips.

### **How to Mount a New Electrical Box**

Metal electrical box utilizes cable clamps to secure nonmetallic cable. This "four-gang" box is designed to hold four switches or receptacles.  
©HomeTips



### **Step-by-Step Guide to Install MCB Distribution Box**

How to Install an MCB Distribution Box Safely: A Step-by-Step Guide Electricity safety is the backbone of operational efficiency in today's fast-paced industrial



## 12 types of distribution boxes and how to choose them

In this guide, we'll break down the 12 main types of distribution boxes in a way that's easy to understand. We'll chat about what each one does, where it shines, and then dive into how to choose the perfect



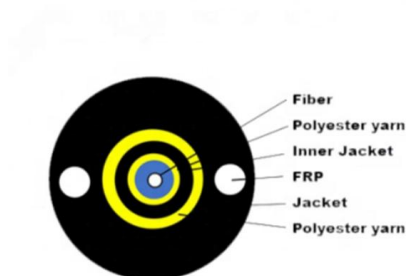
## Power Distribution Boxes Explained Simply

Learn what a power distribution box is, how it works, key components, types, and why it's vital for safe and efficient electrical systems.



## How to Install Electrical Boxes: 11 Steps (Ultimate Guide)

Its primary purpose is to protect electrical wiring connections and components from physical damage, environmental hazards, and unauthorized



## How to Choose the Right Wall-Mount Box for Compact

Discover how to select the perfect wall-mount box for machinery and control panels. Learn about footprint optimization, IP rating selection, and



### Installation process of distribution box

The wall mounted distribution box can be fixed on the wall with expansion bolts, but the dovetail bolts shall be embedded in the hollow brick or block wall or fixed with



[directory-list-2.4.txt/directory-list-2.4.txt at main](#)

Customer stories Events & webinars Ebooks & reports Business insights GitHub Skills

### Practical Guide to Electrical Enclosures for Industrial Applications

Wall-mount: Designed to mount directly on a wall and to house electrical controls, terminals, instruments and components while providing protection from dust, dirt, oil, and water. This type of enclosure can



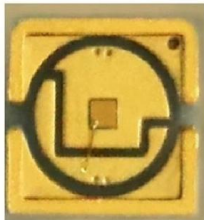
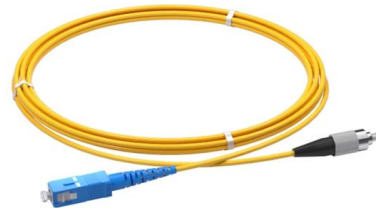
### Tips for Electrical Box Installation

Installing the electrical wall boxes is necessary for switches and receptacle outlets. Follow these tips for electrical box



## Surface-mounting enclosures , Gewiss

The offer consists of watertight boards (in technopolymer, fibreglass-reinforced polyester, metal and stainless steel), junction and connection boxes (in



## Installing a electrical mounting box

How to install an electrical mounting box, which is used behind sockets and switches to attach them to the wall

## Distribution enclosures » all types & all information

Our enclosures are suitable for all types of electrical installations and electromechanical applications. To cover the various areas of application, we



## Key Points Of Installation And Collocation Of Distribution Box In

Distribution box and switch box shall be made of iron plate or high-quality insulating material, and the thickness of iron plate shall be greater than 1.5mm The electrical equipment in the distribution box

## Wall-Mounted vs Floor-Mounted



## Distribution Boxes

Choosing between wall-mounted vs floor-mounted distribution boxes can have a big effect on the safety, economy, and bottom line of your project. This guide helps you compare both choices

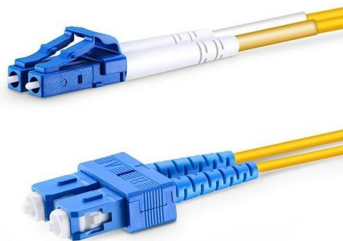
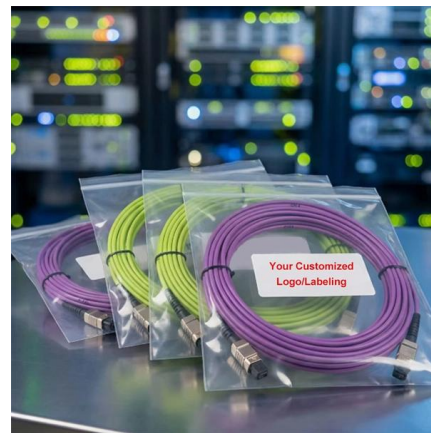


## How Mount An Electrical Enclosure

Wall mount electrical enclosure To mount an electrical enclosure on the wall, you will require hardware such as external tabs, pre-punched holes, or

## Stainless Steel Distribution Boxes Are Typically Installed On Building

Wall mounting is the most common installation method. Based on the installation form, it can be divided into surface mounting and concealed mounting methods, each with its own characteristics; the



## Mounting Electrical Enclosures

[0m:16s] In today's video, we are going to talk about electrical enclosures. But more specifically, we want to talk about some common methods that are used when mounting smaller and medium sized



## How to Install an Electrical Box in a Finished Wall

Follow these expert tips to install an electrical box into drywall or plaster without the need for wall studs or joists.



### Complete Accessories

A complete range of accessories can easily help you achieve the desired effect



## Complete Guide For Distribution Boxes Types

Distribution boxes, also known as electrical distribution boards or panels, are pivotal components in electrical systems, ensuring the safe and organized distribution of

## Contact Us

---

For datasheets, pricing, or custom high-speed optical interconnect solutions, please visit:  
<https://www.syropy.com.pl>