

# **Methods for horizontal fixing of cable trays**





## Overview

---

Fittings can, on the one hand, be used for horizontal or vertical changing of the routing direction or, on the other, to change the height or width of the dimension. When developing our cable support OBO can offer reliable solutions for systems, three attributes are at the routing and fastening cables securely core of what we do: efficiency, resilience and safety. Regarding cable management, the fixing and mounting you choose for your cable trays can make or break your setup. Cable ladder systems and cable tray systems shall be manufactured in accordance with BS EN 61537, channel support. The mechanical and electrical characteristics, tests, certifications, overall quality management, recommendations mentioned.



## Methods for horizontal fixing of cable trays

---



### **Cable Tray Technical Guide A practical guide to product selection and**

A practical guide to product selection and installation This guide for engineers and installers has been developed by ABB as a practical reference regarding cable tray characteristics, installation, and

### **Cable Tray Technical Guide A practical guide to product selection and**

The choice of method should be discussed with a local inspector. The best decision may be to extend only the cables, creating a discontinuity in the cable tray.



### **Method Statement for Installation of Cable Tray or Trunking**

On completion of cable tray/ ladder installation including fittings, inspect exposed finish. Remove burrs & construction debris and repair damages finishes

### **Cable Tray Installation and Cable Handling Method**

3. Cable Tray Support Locations Cable tray supports should be strategically positioned so that connectors between horizontal straight sections of the tray fall



### Cable Reference Installation Methods

Method C C - Single core or multi-core cable on a wooden wall This method also applies to cables fixed directly to walls or ceilings, suspended from ceilings, installed on unperforated cable trays (run



### Best Practice Guide to Cable Ladder and Cable Tray Systems

This guide covers cable ladder systems, cable tray systems, channel support systems and associated supports intended for the support and accommodation of cables and possibly other electrical



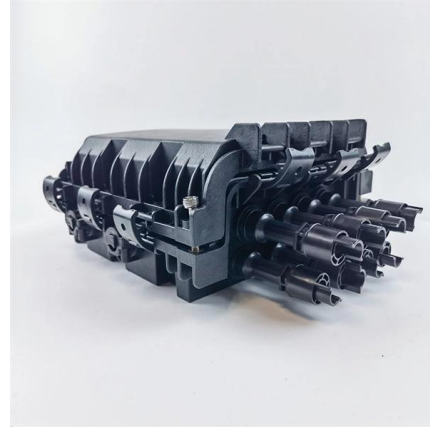
### CABLE TRAY SYSTEMS GUIDE

Cable Tray Systems Guide HUBBELL Hubbell Wiring Device-Kellems and Hubbell Premise Wiring are divisions of Hubbell Incorporated, a U.S. headquartered manufacturer with over 130 years of



## Beama Best Practice Guide , Installation Of The System , Cable

The following recommendations are intended to be a practical guide to ensure the safe and proper installation of cable ladder and cable tray systems and channel support and other support systems.



### Decoding Cable Tray Support Structures: Tips and Insights

Discover efficient cable tray support structures for optimal cable management. Learn about hanger, wall-mounted, and Unistrut systems for safer

### Best Fixing and Mounting Options for Cable Trays , CMW

Discover the best fixing and mounting options for cable trays and wire mesh basket trays. CMW shares tips for efficient cable management.



### Installation Of Cable In Cable Trays: NEC, Safety

Installation of Cable in Cable Trays ensures proper routing, cable management, NEC compliance, grounding, fire safety, and load capacity.



## Mastering Cable Tray Installation , Step-by-Step Guide for a Seamless

Learn how to install cable trays correctly. Get the ultimate step-by-step guide on setting up a seamless and reliable cable management system.

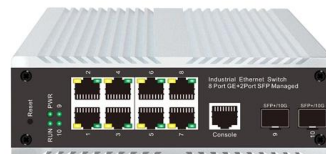


### Cable Tray Installation and Cable Handling Method

Cable tray supports should be strategically positioned so that connectors between horizontal straight sections of the tray fall between the support point and the

### Cable Support Distances

There are various ways of including strain relief sections, but the preferred method is to offset the cable by at least 2 cable diameters for each strain relief section.



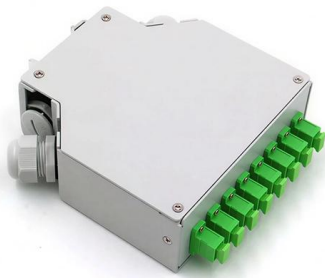
### Cable Tray Technical Guide A practical guide to product selection and

Cable Tray Technical Guide A practical guide to product selection and installation This guide for engineers and installers has been developed by ABB as a practical reference regarding cable tray



## Efficient Cable Tray Installation Methods for Organized

Discover efficient methods for installing cable trays to organize power, data, and security cables. Explore wall, ceiling, and floor mounting options



### Guide to cable support systems

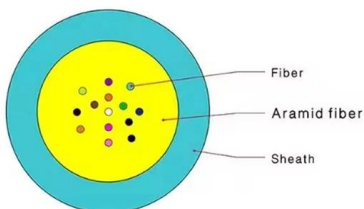
Fittings can, on the one hand, be used for horizontal or vertical changing of the routing direction or, on the other, to change the height or width of the dimension. Practical examples for this are horizontal or

### GENERAL INFORMATION

Cable trays or raceways often provide a convenient, safe and efficient method of fiber optic cable installation. Trays can be installed in ceilings, below floors and in riser shafts. When installing fiber



From standard 1U to 8U sizes to fully customized Non-standard enclosures.



### Cable Tray Installation Guidelines , PDF , Galvanization

This document provides details on installing cable trays and their support systems. It includes diagrams showing how to mount cable trays on walls using pre



### Cable Tray Installation 211215 , PPTX

- The steps for installing cable trays, which include marking, cutting, drilling holes, installing supports, and fixing fittings and accessories. - Common tools used for

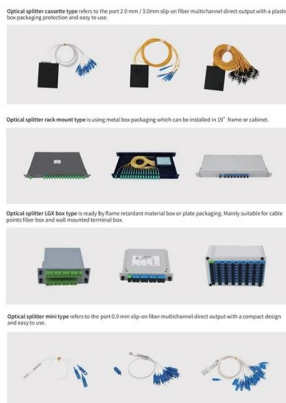


### Connecting Cable Trays: Your Guide to Secure and

Learn common methods for connecting cable trays safely and efficiently. Our guide covers splice plates, quick-connects, and key tips for secure

### Best Fixing and Mounting Options for Cable Trays , CMW

Regarding cable management, the fixing and mounting you choose for your cable trays can make or break your setup. Whether you're managing voice, data, or electrical cables, ensuring



### Cable tray manual

Instead of large conduits, cable channel may be used very effectively to support cable drops from the cable tray run to the equipment or device being serviced and is ideal for cable tray runs involving a



## Fiber Cable Tray System

Installation and maintenance of cable tray wiring systems should be performed by a minimum of two qualified technicians. For the purposes of this guideline, a qualified technician is one who is familiar



## GUIDE CABLE TRAYS TECHNICAL

NEMA VE 1-2017 Specifies requirements for metal cable trays and associated fittings designed for use in accordance with the rules of Canadian Electrical Code, Part I and the National Electrical Code®

## Contact Us

---

For datasheets, pricing, or custom high-speed optical interconnect solutions, please visit:  
<https://www.syropy.com.pl>