

Methods for fixing cable tray joints





Overview

The main cable tray connection methods include splice plates, bolted connections, quick connect systems, fish plates, clamps, and welding. Regarding cable management, the fixing and mounting you choose for your cable trays can make or break your setup. Whether you're managing voice, data, or electrical cables, ensuring your trays are installed correctly is essential to keeping everything neat, secure, and functional. Covers are available for 45° and 90° bends, angle-adjustable bends, T pieces, add-on tees and cross-overs. Cable ladder systems and cable tray systems shall be manufactured in accordance with BS EN 61537, channel support.



Methods for fixing cable tray joints



Guide to cable support systems

A cable support system consists of cable support lengths and system components, such as cable support fittings, support elements, mounting elements and system accessories. The cable support

Best Fixing and Mounting Options for Cable Trays , CMW

Discover the best fixing and mounting options for cable trays and wire mesh basket trays. CMW shares tips for efficient cable management.



Understanding Cable Joints and Preventing Failure in

Learn the proper techniques of avoiding cable joint failure through proper tray systems. Get professional secrets of heating regulation and

Cable Tray Technical Guide A practical guide to product selection and

A practical guide to product selection and installation This guide for engineers and installers has been developed by ABB as a practical reference regarding cable tray characteristics, installation, and



Best Practice Guide to Cable Ladder and Cable Tray Systems

This guide covers cable ladder systems, cable tray systems, channel support systems and associated supports intended for the support and accommodation of cables and possibly other electrical



Method Statement installation of Cable Trays and Ladders

Fixing cable Trays and ladders Sleeves shall be provided at all the wall crossings. Ensure the installation of trays/ladders is neat and in a straight



Connecting Cable Trays: Your Guide to Secure and

Learn common methods for connecting cable trays safely and efficiently. Our guide covers splice plates, quick-connects, and key tips for secure



Five Common Cable Tray Installation Defects and

Cable tray installation may seem straightforward, but field experience reveals the same five defects appearing repeatedly across projects worldwide.



Cable Tray Trunking & Ladder Installation Method Statement

Tray and Trunking joints are to be positioned as close to the supports as possible. Install 12.5mmx1.5mm copper earth bonding straps externally between all length of Cable Tray / Trunking &



Cable Tray Installation and Cable Handling Method

Efficient cable tray installation and proper cable handling are critical for ensuring the reliability and safety of electrical systems. Adherence to these guidelines is



INSTALLATION GUIDE

We have more than a decade's worth of experience making and designing quality cable tray and cable management systems. Our knowledgeable production team works closely with each customer to





GRP/FRP Mita Flex Installation Guidelines

The correct installation of cable ladders and cable trays is important to help maximize the safe working load as defined by our published load tables and to minimize deflection.



Beama Best Practice Guide , Installation Of The System , Cable

The following recommendations are intended to be a practical guide to ensure the safe and proper installation of cable ladder and cable tray systems and channel support and other support systems.

Installation of Cable Tray, Trunking And Accessories

2. Purpose This method statement for the Installation of Cable Tray, Trunking, and Accessories shows and explains the procedure must be followed to install the cable tray and



300mm Cable Tray Hanging & T-Joint Fixing in 60 Sec!#

Learn the fastest way to hang & fix a 300mm cable tray T-joint! Perfect for electricians & engineers. ? more



How to Fix Common Cable Management Issues using

Discover common cable management problems and how cable tray accessories effectively solve them to ensure safety and performance.



Cable Tray Trunking & Ladder Installation Method for

The purpose of this article is to define the sequence and methodology for the installation of electrical cable trays, cable trunking, cable raceways and boxes,



100+ Essential Questions Answered About Cable Trays:

Discover over 100 expert answers about cable trays, covering key topics like material selection, load capacity, installation methods, and maintenance.



Precautions for Cable Tray Installation

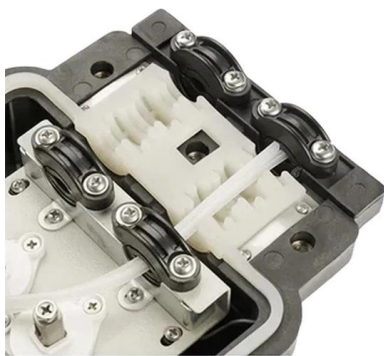
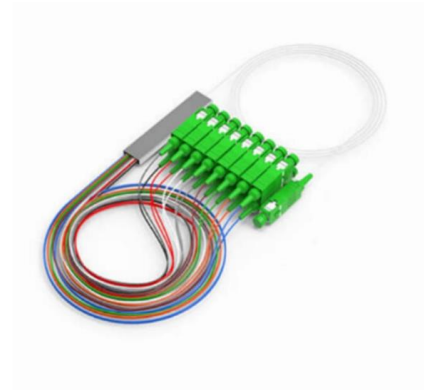
Cable trays installed in dusty environments. Special requirement locations. Cables laid inside the cable tray should be fixed with nylon straps, binding wires, or metal



Mounting instructions



For unperforated cable trays, pre-drill the connector perforation for the add-on tee and joint plate. Fig. 50: Screwing the add-on tee on a continuous cable tray

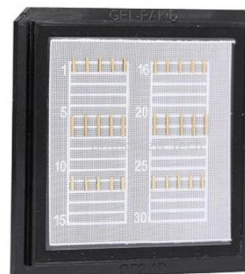


Cable Tray Technical Guide A practical guide to product selection and

The choice of method should be discussed with a local inspector. The best decision may be to extend only the cables, creating a discontinuity in the cable tray.

Cable Tray Systems: Requirements and Best Practices

Comprehensive guide to cable tray systems requirements: tray types, materials, loading, supports, bonding, routing, and best practices for safe electrical cable management.



Cable tray expansion joint setting method

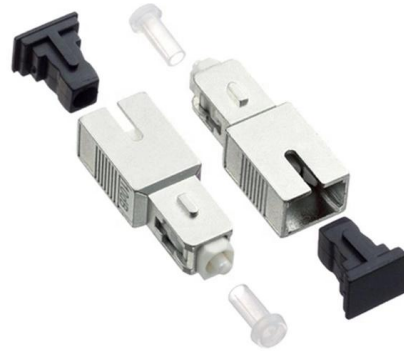
Reasonable setting of cable tray expansion joints is a key link to ensure the safe operation of the cable tray system, and factors such as thermal expansion compensation, vibration absorption





A Guide to Installing and Supporting Electrical Cable Trays

This guide covers the critical steps, from selecting the right electrical cable tray and performing accurate cable fill calculations to managing a safe cable pull through



Mounting instructions

Electrically trained specialists charged with installing cable support systems and cable trays. These instructions are based on the standards valid at the time of compilation (12/2023). Please read the



Method Statement for the Installation of Cable Tray, Trunking, and

Ensure cable tray, trunking or ladder are installed neatly on the surface and be truly vertical, horizontal or parallel with the features of the building. Wherever the accessories like Tees, Flat Elbows,



Contact Us

For datasheets, pricing, or custom high-speed optical interconnect solutions, please visit:
<https://www.syropy.com.pl>