

# **Methods for changing diameter tees in cable trays**





## Methods for changing diameter tees in cable trays

---



### **Cable Tray Technical Guide A practical guide to product selection and**

The choice of method should be discussed with a local inspector. The best decision may be to extend only the cables, creating a discontinuity in the cable tray.

### **Cable Tray Size Calculation for Project Engineers**

Cable tray size calculation is important for ensuring safe cable installation, proper heat dissipation, and enough spare capacity for future



### **Installation Of Cable In Cable Trays: NEC, Safety**

Installation of Cable in Cable Trays ensures proper routing, cable management, NEC compliance, grounding, fire safety, and load capacity.

### **Cable Tray Dimensions Guide: Standard Sizes, Tray**

Explore standard sizes by tray type, understand width and depth limits, and see how to calculate and choose compliant cable tray sizes for real projects.



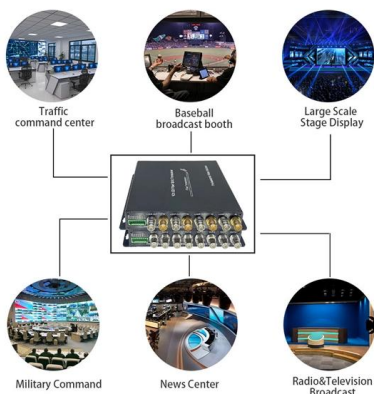
### Cable Tray Installation Guide , NEMA VE 2-2018

NEMA VE 2-2018 Cable Tray Installation Guidelines. Learn best practices for cable tray installation, support, and accessories.



### How to Install Cable Tray: A Comprehensive Guide to Different Cable

Welcome to our step-by-step guide on installing cable trays! In this video, we'll explore the different types of cable trays available and provide detailed instructions for their installation.



### CABLE TRAY

Figure 4.51 A channel cable tray can be added to an existing cable tray system using this method to add additional approved cabling systems. Refer to the loading information of the existing cable tray



## ITER Cabling Handbook

This document deals with cables trays, cables and connector installation and segregation, cable trays earthing and E.M.C. directives. These rules shall be applied in the cabling engineering workflow for

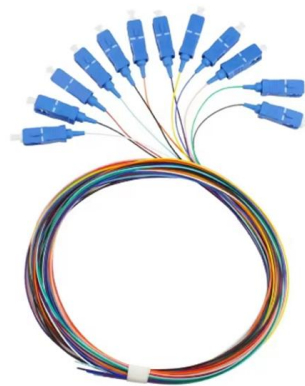


## Everything You Need to Know About Cable Trays

Discover everything you need to know about cable trays reducers. Learn about their types, selection, installation, and maintenance to ensure your

## Best Practice Guide to Cable Ladder and Cable Tray Systems

This publication is intended as a practical guide for the proper and safe\* installation of cable ladder systems, cable tray systems, channel support systems and associated supports.



## 100+ Essential Questions Answered About Cable Trays:

Discover over 100 expert answers about cable trays, covering key topics like material selection, load capacity, installation methods, and maintenance.



## IEC Standard for Cable Tray: Complete Technical Guide

The IEC standard for cable tray recognizes multiple tray types depending on application and structure. Each type serves a different purpose in



### Annex I

The cable tray walls must be higher than the external diameter of the cable or group of cables installed in it, respecting EMC 2014/30/UE. However, 50 mm height shall be the minimum required.

### Cable Tray SHIB NAL

Cable trays are not raceways, but they are treated as a structural component of a facility's electrical system. Cable trays are a part of a planned cable management system to support, route, protect and



### Best practice guide to cable ladder and cable tray

Cable ladder and cable tray systems The following recommendations are intended to be a practical guide to ensure the safe and proper installation of



### Cable Tray Fitting

Cable Tray Fitting - Tee NOTE : Equal or un equal tees can be supplied. When ordering state widths W1xW2xW3



### GUIDE CABLE TRAYS TECHNICAL

When fitting cable trays and their accessories, the products are cut on site to create changes of direction, adjust sections, etc. Damage can also occur during handling; as a result, both the

### cable tray system

A CABLE TRAY SYSTEM As technology advances, so too does the need for effective support systems. Today, plants and buildings are moving more and more towards automation.



### Cable Tray Sizing & Load Calculations Made Simple

You don't need a PhD--just a consistent method. This step-by-step approach helps you determine width, depth, support spacing, and allowable load with confidence. Step 1: Define Cable



## Cable Tray Design and Standards Guide

1. The document outlines codes and standards that must be followed for design and construction of cable trays and their components. Standards listed include those



## Cable tray manual

Instead of large conduits, cable channel may be used very effectively to support cable drops from the cable tray run to the equipment or device being serviced and is ideal for cable tray runs involving a



## Cable Tray Technical Guide A practical guide to product selection and

A practical guide to product selection and installation This guide for engineers and installers has been developed by ABB as a practical reference regarding cable tray characteristics, installation, and



## CABLE TRAYS

The lines we propose allow industrializing any type of cable tray. Our lines are suitable to manufacture cable trays, in different widths and heights, by just changing the coil and rollforming width.



### How to Manage Cables in Cable Trays: Principles and Methods

Learn how to manage cables in cable trays effectively with our comprehensive guide for cable classification, protection, and installation to ensure electrical system safety and efficiency.

### cable tray system

Fittings are sections of cable trays which are joined to other cable trays sections for the purpose of changing the direction, elevation or width of the cable run. All fittings are available in sizes



### Best Practice Guide to Cable Ladder and Cable Tray Systems

This guide covers cable ladder systems, cable tray systems, channel support systems and associated supports intended for the support and accommodation of cables and possibly other electrical



## Contact Us

---

For datasheets, pricing, or custom high-speed optical interconnect solutions, please visit:

<https://www.syropy.com.pl>