

Method for Assembling Electricity Meters in Distribution Boxes





Method for Assembling Electricity Meters in Distribution Boxes

Pre-Terminated Patch Panel

- Multi-application support
- Flexible configuration
- Modular design



Multi-functional Sliding Patch Box, Modular



Modular Sliding Patch Box



Sliding Patch Box, Modular

Wiring of the Distribution Board From Energy Meter to

Wiring of the Distribution Board (Single Phase Supply From Utility Pole & Energy Meter to the Consumer Unit While we have already discussed the distribution

technical guidance for developers domestic electricity

Please note that this information is for guidance only (as per Streetworks UK), and the adopting network owner may have specific requirements that will be shown on your electricity design, or other utility



energy meter connection with distribution box #electrical

This quick guide is perfect for DIY enthusiasts and homeowners looking to manage their electricity use better. Watch as we demonstrate step-by-step instructions, making complex tasks simple.



ADDC Guidelines for Smart Meter Installation (Rev)

Install 25mm dia. PVC conduit (Heavy grade 1250N compression force) horizontally between the water meter room to electricity meter room in each floor and install vertically between the floor-to-floor from



Electric Meter Box Installation Guide

The Definitive Guide to Electric Meter Box Installation Electric meter boxes are the unsung heroes of our power grid, safely housing the crucial metering equipment that tracks our energy consumption.



Meter Box Equipment Installation Guidelines , PDF

Guidance on equipment in meter boxes - Free download as PDF File (.pdf), Text File (.txt) or read online for free.



Meter Box vs Distribution Box: 8 Key Differences You Must Know

Understand the difference between meter boxes and distribution boxes, their roles, safety functions, standards, and correct applications in electrical systems.



How to Install an Electric Meter Box

What Is an Electric Meter Box? An electric meter box is a case that has an electric meter that keeps the track of energy you use. It protects the meter

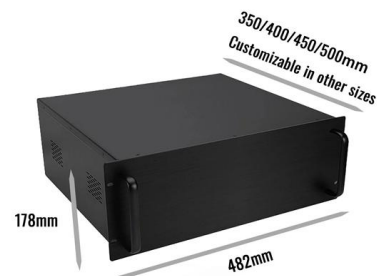


Single Phase Energy Meter and Distribution Board Wiring ,, Trade

single phase energy meter and distribution board wiring, trade electrician, iti, trade electrician channel, electrician, electrical, subhas hansda, D

Guidance on installing equipment within meter

The experts at NICEIC provide more detail on the installation of equipment in meter boxes. Electrical equipment associated with the consumer's



Size determination, installation method and wiring mode

The distribution box is the central hub of the home circuit and the general control of our daily power consumption. It is an indispensable electrical equipment. If there



PRACTICE OF INSTALLATION AND SEALING OF ENERGY METERS

At present, energy meters based on electromagnetic technology and static meters are being used in the Indian Distribution Network. Single-phase meters are being used for most of the domestic and some



How to Install a New Electric Meter Box

The electric meter measures the amount of electricity that is used by your home or business, which tracks it by a rate of kilowatts per hour as is the

Connecting the Meter to the Breaker Box: A Guide to

Learn about the important wire connection between the meter and breaker box for electrical systems. Ensure a safe and efficient power distribution.



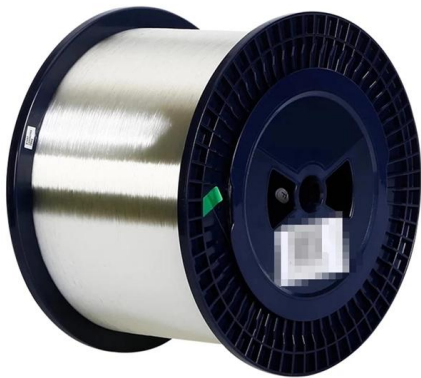
Single phase energy meter wiring from pole to Distribution box

3 phase energy meter wiring from pole to distribution box , Energy meter panel explanation



ADDC Guidelines for Smart Meter Installation (Rev)

The scope of these guidelines is to accept and ensure that all electricity and water meter installation requirements are met for installing the meter in accordance with the ADDC standard and regulations.



Step-by-Step Guide to Installing a Meter Box

Welcome to our comprehensive guide on installing a meter box, also known as a GRP (Glass Reinforced Plastic) electrical enclosure or electrical

assembling a distribution box with an electricity meter

Through the above steps, the assembly of the distribution box with an electricity meter that complies with the CE standard can be completed, ensuring safety, compliance, and easy



YOUR METER CABINET

The meter cabinet must be directly accessible from the main entrance driveway. A position on the house wall facing the driveway, or within 2m of either corner of this wall is normally acceptable subject to

How to install an electric meter in the meter box?



The steps for installing an electric meter in the meter box are as follows: Preparation stage: Firstly, check the voltage, current and other parameters of the energy



Microsoft Word

CT meter boxes for 200, 300 and 400 Amps may be used if required in conjunction with the Inside Room meter boxes to complete the installation as per SEC spec No. 42-SDMS-01 latest revision.

What Is a Meter Box? A Complete Guide to Types,

Learn what a meter box is, why it matters for electrical safety, its types, components, standards, and best installation practices for long-term reliability.



The installation requirements for the distribution box

A distribution box is the heart of any electrical system. It takes the incoming power and safely distributes it to different circuits throughout your



assembling a distribution box with an electricity meter

Through the above steps, the assembly of the distribution box with an electricity meter that complies with the CE standard can be completed, ensuring safety, compliance, and easy maintenance.



How to Install an Electric Meter Box 2026

Step-by-step guidance on installing an electric meter box safely--site prep, clearances, mounting height, wiring, grounding, permits, and code

Contact Us

For datasheets, pricing, or custom high-speed optical interconnect solutions, please visit:
<https://www.syropy.com.pl>