

Measurement of cable tray length for cable laying





Measurement of cable tray length for cable laying



How to Calculate Cable Tray Size? Know Here

How to Calculate the Right Cable Tray Size for Your Project? May 14, 2026 Every cable in your facility sits in a cable tray, and getting the cable tray size right is trickier than it looks. An

Cable Tray Load Calculation and Sizing: Your Easy Guide

Worried about cable tray capacity? Learn simple cable tray load calculation steps. This guide helps you pick the right tray every time, keeping



Best practice guide to cable ladder and cable tray

Cable ladder and cable tray systems The following recommendations are intended to be a practical guide to ensure the safe and proper installation of



Cable Tray Sizing Calculator , IEC 61537 & NEC 392 Guide

Use this cable tray sizing calculator to check fill %, select tray size, and comply with IEC 61537 & NEC 392 with formulas, example and checklist.



How To Calculate Cable Tray Size , Step-by-Step Guide

Learn how to calculate cable tray size step-by-step, including formulas, standard sizes, and practical tips. Find out the best practices for



Best Practices for Cable Laying by EVIO

Cable Tray Considerations When laying cables in trays, ensure that the trays are curved appropriately at right angles. This will help maintain the



Cable Tray Dimensions Guide: Standard Sizes, Tray

Many users focus only on tray width, assuming that a wider tray automatically means higher capacity. In practice, cable tray dimensions are a





Method Statement installation of Cable Trays and Ladders

This method statement covers the site installation of the cable tray & ladders and the requirements of checks to be carried out.



Cable Tray Size Calculation Guide , PDF , Length

It calculates the total diameter, weight, and width of the cables and then determines if two example cable tray sizes (300x100mm and 600x100mm) would be suitable

Cable Tray Capacity Calculator

A Cable Tray Capacity Calculator is an essential tool for electrical engineers, contractors, and project managers involved in the installation and



Best Practice Guide to Cable Ladder and Cable Tray Systems

This guide covers cable ladder systems, cable tray systems, channel support systems and associated supports intended for the support and accommodation of cables and possibly other electrical





Cable Tray Size Choosing: Key Factors for Electrical

The size of the cable tray you choose can significantly impact the performance and safety of your electrical system. Key factors that influence cable



Cable Tray Dimensions and Specifications as per NEC

The entire amount of the cross-sectional areas for all of the single conductor cables that are going to be positioned in the cable tray needs to be



Calculating Suitable Size of Cable Tray

Cable trays are essential components in electrical installations, providing a safe and organized way to route and support electrical cables. The suitable size of a cable tray is crucial for



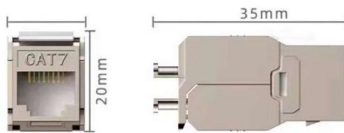
How to Calculate the Cable Tray Support Quantity

Learn how to accurately calculate cable tray support quantities in electrical installation projects. Our guide covers methods,



Cable Tray Size Chart and Selection Guide

Shallow trays of 50mm or less are limited to single-layer cable arrangements with small-diameter cables, while 100mm or deeper trays can accommodate multiple layers or large-diameter



Cable Tray Size Calculation for Project Engineers

Cable tray size calculation is important for ensuring safe cable installation, proper heat dissipation, and enough spare capacity for future

Cable Tray Technical Guide A practical guide to product selection and

Cable tray length is selected based on the load to be supported, the distance between the supports (also referred to as the span), and handling and installation constraints.



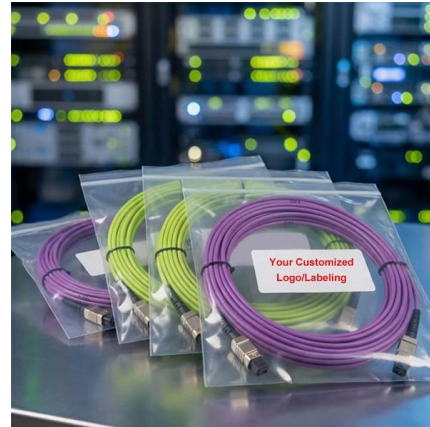
Free Cable Tray Sizing Calculator -- IEC, AS/NZS, NEC, BS

The cable tray calculator determines the required tray width and type based on the number and size of cables to be installed, ensuring adequate fill levels and derating compliance.



Cable Tray Size and Dimensions: How to Choose the

Learn how to calculate the perfect cable tray size and dimensions for your electrical project. This guide covers load capacity, fill ratios, and industry



GUIDE CABLE TRAYS TECHNICAL

When fitting cable trays and their accessories, the products are cut on site to create changes of direction, adjust sections, etc. Damage can also occur during handling; as a result, both the

Cable Tray Technical Guide A practical guide to product selection and

Cable Tray Technical Guide A practical guide to product selection and installation This guide for engineers and installers has been developed by ABB as a practical reference regarding cable tray



Huijue engineering specific Fiber optic

HJ GROUP offers a wide variety of product types for you to choose from.



Cable Tray Fill Calculator

Solid bottom trays: 30-40% for power cables, up to 50% for control/instrumentation The fill capacity of a cable tray refers to the maximum amount of space that can be occupied by cables while maintaining



Contact Us

For datasheets, pricing, or custom high-speed optical interconnect solutions, please visit:

<https://www.syropy.com.pl>