

Maximum Core Switch





Overview

Includes dual power supplies, hot-swappable modules, link aggregation (LAG), and support for HSRP/VRRP. Modular chassis or stackable designs make it easy to scale as your network grows. Engineered to aggregate massive volumes of data from distribution switches, it provides ultra-low latency and maximum throughput to ensure uninterrupted routing and packet. This help center can answer your questions about customer services, products tech support, network issues. The LANCOM core switch is the centerpiece of a network and offers enormous switch capacity, 100% reliability, and scalability for the entire campus LAN. As the top and highest-throughput layer of a three-tier switch architecture, this high-performance backbone forwards data packets efficiently and. The values provided in this guide should not be interpreted as theoretical system limits for Cisco NX-OS hardware or Cisco NX-OS software.



Maximum Core Switch



Data Center Switches

Why Ruijie Data Center Switches High-speed Interconnection Featuring Ruijie's highest density 400G data center core switch, our solution utilizes 25/56G SerDes technology evolving to 112G SerDes,

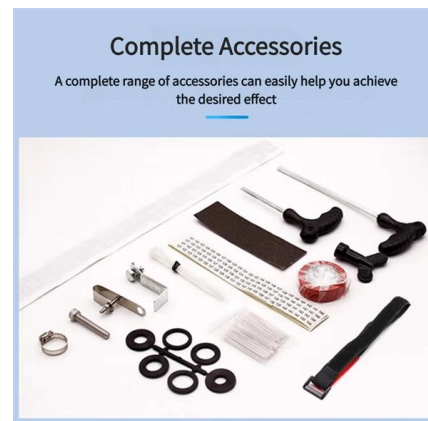


What Is a Core Switch in a Network?

Define the core switch--the central, high-speed backbone required for aggregating and routing massive volumes of enterprise network traffic.

What Is a Core Switch?

Explore what a core switch does, why it's essential for enterprise networks, and how to choose the right model. Includes real-world applications and Cisco/Huawei/Aruba model comparison.



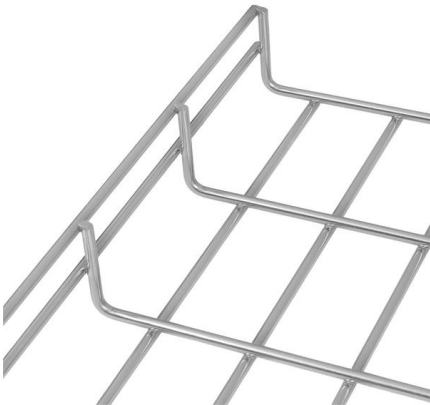
How To Enable All Cores in Windows

Core Settings In Windows 10 If you're using Windows 10, all of your processor cores will be fully utilized by default if your BIOS/UEFI is set correctly.



HPE Aruba Networking CX switches

Data center Additional campus and data center switches HPE Aruba Networking CX 6400 Switch Series High-availability modular chassis and line card switches for



VMware Configuration Maximums

This Configuration Maximums tool provides the recommended configuration limits for VMware products. When you configure, deploy and operate your virtual and physical equipment, it is highly



What is Core Switch and How to Choose?

Discover what a core switch is and learn how to choose the right one for your network. Explore key features in selecting a core layer switch. Make





How Many Core In Fiber Optic Cable Do I Need

For example, if you have three optical fiber access switches, you need to have three cores. (actually use a four core optical cable) This is because apart

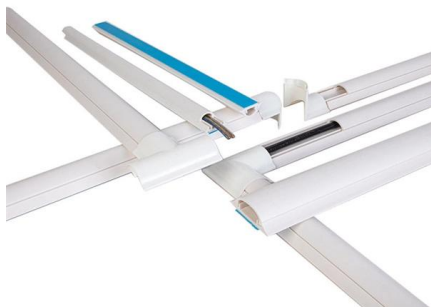


NVSwitch: Leveraging NVLink to Maximum Effect

NVSwitch Die Shot NVSwitch is implemented on a baseboard as six chips, each of which is an 18-port, NVLink switch with an 18x18-port fully

What Is a Core Switch? Network Backbone Architecture Guide

Think of a core switch as the high-speed interstate highway of your network. It does not inspect the cargo or check driver's licenses; its sole mandate is to move massive amounts of traffic



Understanding Core Switch: What It Is and How to

In the realm of system networking, three key types of switches are frequently mentioned: access switches, aggregation switches, and core switches.



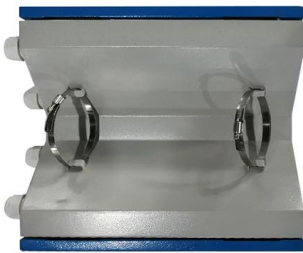
How to Choose the Right Core Switch?

Learn how core switches for enterprise networks and LAN campus networks function in the hierarchical internetworking model and how to choose



Understanding Core Switch: What It Is and How to

Typically, core switches are Layer 3 switches equipped with robust network management capabilities. They are characterized by numerous ports and



Configuration Maximums

Networking maximums represent achievable maximum configuration limits in networking environments where no other more restrictive limits apply (for example, vCenter Server limits, the limits imposed by



How to choose the right core switch for a medium to

In medium to large networks, core switches are key devices to ensure efficient, stable and secure network operation. Choosing the right core switch not

Core Switch



Core switches are defined as high-capacity switches located at the top of a cloud data center network, connecting aggregation switches and providing interfaces to wide area networks (WANs).



any idea if changing the "number of processors" thing in

any idea if changing the "number of processors" thing in msconfig/boot/advanced has any impact on performance? i enabled all 4 cores but havent noticed anything,

Best Core Switches for 2026 Enterprise Networks

Discover the best core switches for 2026 enterprise networks. Explore top-rated data center and modular options, key trends like 400G/800GbE, and expert recommendations.



Understanding the Core Switch: Key Differences and Uses

Explore the core switch's role as the backbone of your network. Discover key differences, uses, and insights into layer 3 core switch technology.



Core Switches: LANCOM Systems GmbH

The LANCOM core switch is the centerpiece of a network and offers enormous switch capacity, 100% reliability, and scalability for the entire campus LAN.

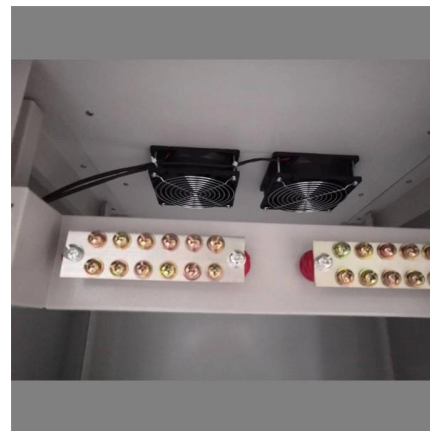


L2 SWITCHES

L2+/Lite L3 10G Multi-Gigabit Ethernet Switch
The Edgecore ECS5500-12P switch is a 10G Ethernet access switch with 8 x 10GBASE-T ports and 2 x 10G SFP+/2 x

Overview about power and performance tuning for the Windows Server

Processor performance core parking maximum and minimum cores Core parking is a feature that was introduced in Windows Server 2008 R2. The processor power management (PPM)



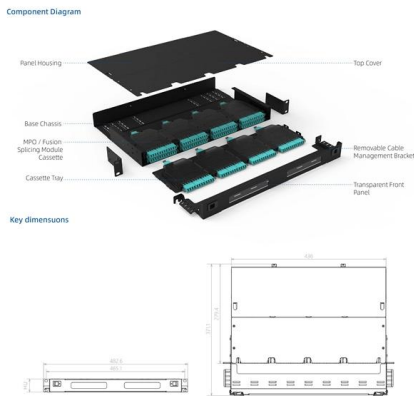
Best Core Switches for 2026 Enterprise Networks

Discover the best core switches for 2026 enterprise networks. Explore top-rated data center and modular options, key trends like 400G/800GbE, and expert recommendations. Click to find high



Den Core Switch verstehen: Wichtige Unterschiede und

Core-Switches und Access-Layer-Switches erfüllen in einem Netzwerk unterschiedliche Funktionen. Core-Switches bilden das Rückgrat des



Choosing Your Core Switches - Majornetwork

If you single-home your FEXes then you can have a total of 16 FEXes with each Nexus 5500 pair (you implement core switches in pairs, right?). When dual-homing the FEXes then the

How to Choose the Suitable Number of Fiber Cores for

Learn how to choose the suitable number of fiber cores for your network, ensuring optimal performance and future scalability.



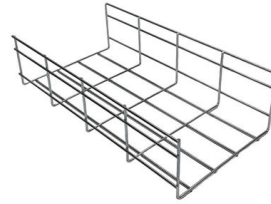
Cisco Nexus 9000 Series NX-OS Verified Scalability Guide, Release

Each number is the absolute maximum that is currently supported by this Cisco NX-OS release for the corresponding feature. If the hardware is capable of a higher scale, future software



Chapter 34. Tuning the network performance

34.2. Tuning IRQ balancing On multi-core hosts, you can increase the performance by ensuring that Red Hat Enterprise Linux balances interrupt queues (IRQs) to



Core Switch vs. Distribution Switch vs. Access Switch

Generally, multiple data switches are used at the core layer of a network so that a large amount of data can be routed to the layers in the hierarchy. Another reason

Was ist ein Core Switch? Grundlagen & Vorteile

Core Switch-Umgebungen im Überblick: Wie zentralisierte Netzwerke Stabilität, Geschwindigkeit und Effizienz für Unternehmen steigern können.



- IP65/IP55 OUTDOOR CABINET
- OUTDOOR CABINET WITH AIR CONDITIONER
- OUTDOOR ENERGY STORAGE CABINET
- 19 INCH

Contact Us

For datasheets, pricing, or custom high-speed optical interconnect solutions, please visit:
<https://www.syropy.com.pl>