

Manually adjust the optical module power





Manually adjust the optical module power



Buck-Boost Converters Solving Power Challenges in Optical Modules

Brigitte Hauke This application note gives a short introduction to optical modules and the need of an optimized power tree in them and then concentrates on the use cases and benefits of four-switch and

The need for current sensing in optical modules for 100G and beyond

In this post, I'll discuss various current-sensing functions in high-bandwidth data communication applications for pluggable optical modules.



Setting Optical Power Alarm Thresholds

The configured optical power alarm thresholds must be within the default range. The default optical power alarm thresholds are proper values verified by testing. Therefore, it is not recommended to

Configuration Guide for Cisco NCS 1001, IOS XR

This chapter describes how to configure the Optical Amplifier Module and Protection Switching Module (PSM).



Optical Power Meters: Understand Their Uses

Optical power meters are indispensable instruments for testing and maintaining modern fiber optic communication and other



Configuration Guide for Cisco NCS 1001, IOS XR Release 7.0.1

This chapter describes how to configure the Optical Amplifier Module and Protection Switching Module (PSM).



User Manual

The adjustment of RF output power is achieved by changing the resistance of a multi-turner : turn clockwise to increase the output power, turn counterclockwise to decrease the output power.





Understanding Optical Modules: Working Principles,

Explore the working principles, structures, and performance metrics of optical modules, essential components of optical fiber communication systems. Learn

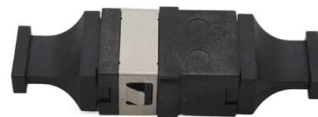


Enabling Higher Data Rates for Optical Modules With Small and Efficient

ABSTRACT A constant trend in optical modules is to offer higher data rates within the size-limited and thermally-limited form factor by using smaller, integrated Power and Data-Converter solutions.

Configure Optical Modules

NCS 1001 supports two methods to control amplifiers. Manual-All the amplifier settings are controlled by the user. Automatic-All the amplifier settings are controlled by the internal amplifier power regulator.



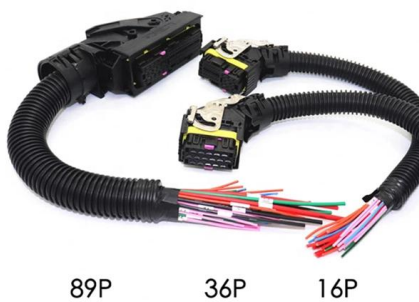
Fiber Optic Cable Installation and Handling Instructions

Introduction Fiber optic cables can be easily damaged if they are improperly handled or installed. It is imperative that certain procedures be followed in the handling of these cables to avoid damage



Configure Optical Modules

Configure Optical Modules This chapter describes how to configure the Optical Amplifier Module and Protection Switching Module (PSM). Note When you plan to replace a configured optical module with



1550nm external modulated optical transmitter operating manual

WT-1550-EM30 series transmitter has 7 function modules: RF control, DFB laser, optical modulator, SBS control, CSO control, communication/display control and power supply. Automatic gain control

Buck-Boost Converters Solving Power Challenges in Optical Modules

This application note gives a short introduction to optical modules and the need of an optimized power tree in them and then concentrates on the use cases and benefits of four-switch and inverting buck



ZEISS AXIO IMAGER 2 OPERATING MANUAL Pdf

Low resolving power/poor image contrast: This can be caused by immersion oil on a dry objective (clean the lens), incorrect cover-slip correction ring setting (adjust



Powering Optical Modules

Powering the Optical transceivers & Hardware used in the most advanced Telecom and Datacom Infrastructure Solutions for All Optical Modules for Today's and



Optical-Module Parameter Inquiry and Alarm Configuration

Chapter 1 Optical-Module Parameter Inquiry and Alarm Configuration 1.1 Introduction of Optical Module's Parameters The parameters of optical module include the light transmission power, the

Displaying Optical Module Information

If the connected optical modules have the same wavelength and provide short-distance transmission but alarms indicating low or high optical power occur, the two optical modules may be from different



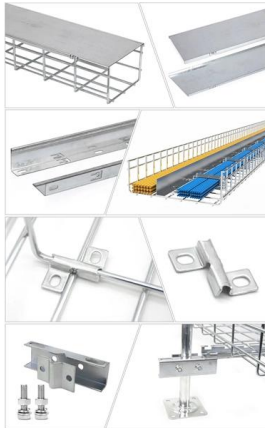
Huawei Technical Support

Learn how to display optical module information on Huawei devices using specific commands and understand the diagnostic details of optical modules.



DESIN SLUINS

How to Power Your QSFP-DD Optical Transceiver at data centers. Current speeds of 10Gbps, 40Gbps, and 100Gbps will soon be surpassed by 200Gbps and 400Gbps. With the increase in speed, the power



Optical Module Common Failure Of Optical Power

When the optical modules at both ends of the link work normally, the received optical power is within a certain range, which can be learned by checking the

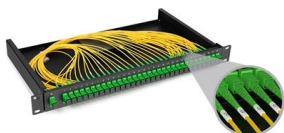
How Do I Ensure that the Transmit and Receive Optical Power of an

Use a cotton swab to clean the bores, and then check whether the transmit optical power of the optical module is within the normal range. If not, contact Huawei technical support personnel. If



Understanding Tx and Rx Power of an SFP Optical

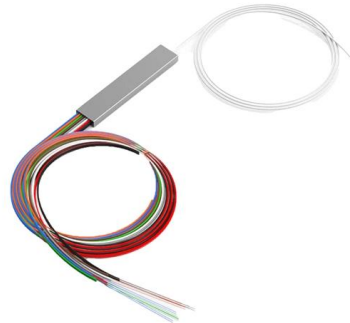
Learn about the TX and RX power of SFP modules, their key parameters, functions, and how to monitor them for stable network performance.





Multichannel Optical Power Meter Instruction Manual

Optical Power Meter, Channel Performance tical power level with the given sampling interval. Changes in light levels such as modula Instrument, Warm-up Time trument has to acclimate to a changing



Desktop Optical Fiber Amplifier

Make sure that no light is emitted from the optical connector end face before the observation by a microscope or other methods. Thoroughly read this operation manual before using this instrument.

Adjust Optic

Adjust Optic - OMNITEK manual book - Free download as PDF File (.pdf), Text File (.txt) or read online for free. When first using the system or if light throughput



Optical-Module Parameter Inquiry and Alarm Configuration

The following command shows how to enable the transmitting optical power alarm on port e8/1, set the maximum and minimum values, and clear the alarm thresholds.



Contact Us

For datasheets, pricing, or custom high-speed optical interconnect solutions, please visit:

<https://www.syropy.com.pl>