

Management Port of Aggregation Switch





Management Port of Aggregation Switch

Focus creates quality products



What are Link Aggregation Groups (LAGs) and how do

What are Link Aggregation Groups (LAGs) and how do they work with my managed switch? Link aggregation lets a switch treat multiple physical links

Switches: Link Aggregation

Link Aggregation is the process of combining multiple physical links (ports in the case of switches) to form one logical link, for purposes of increasing total available bandwidth, performance and reliability.



Aggregation layer , FortiSwitch 7.6.0 , Fortinet Document Library

The most appropriate FortiSwitch unit to form the aggregation layer comprises many 10/25/40 gigabit Ethernet ports to address the access layer and a few 100-GbE ports towards the core layer.



Understanding Switch Aggregation: A Comprehensive

: Unifi Switch Aggregation Review: This video review examines the Unifi switch aggregation, a new eight port ten gb sfp+ switch from



What is Switch Aggregation, Its Role and Selection Advice

Port types and numbers: Since aggregation switches need to aggregate data from multiple access switches and forward it to the core switch, the port types and numbers of both

Configure Aruba Aggregation Switch :: Cray System Management (CSM)

Three connections between the switches, two of these are used for the Inter switch link (ISL), and one used for the keepalive. The ISL uses 100GB ports and the keepalive will be a 25 GB port.



HPE Aruba Networking CX switches

HPE Aruba Networking CX 6300 Switch Series Layer 3 stackable access and aggregation switches with Multi-Gigabit Ethernet, High Power PoE, and up to



What is an Aggregation Switch?

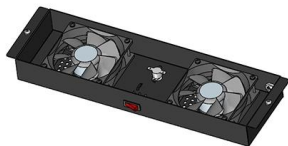
The aggregation switch is located in the middle of the network architecture, which is equivalent to a middle-level manager of a company. It

Motor protection controller



What Is an Aggregation Switch and How to Choose?

An aggregation switch is a network device that consolidates traffic from multiple access switches, wireless access points, or other edge devices and



How To Set Up Switch Link Aggregation

In this article, I'm going to describe how to set up Link Aggregation between two managed switches to provide connectivity, redundancy, and expanded



Length:19.3mm
Small-end inner diameter:2.0mm
Large-end inner diameter:3.5mm
Outer diameter:5.5mm



What is an Aggregation Switch? , Features and Practical Benefits

Additionally, the access switch includes user management features like address authentication, user authentication, and user information collection in addition to offering sufficient



JetStream 8-Port 10GE SFP+ L2+ Managed Switch

JetStream 8-Port 10GE SFP+ L2+ Managed Switch. As a 10G switch with full SFP+ ports that seamlessly integrates into the Omada Software Defined Networking

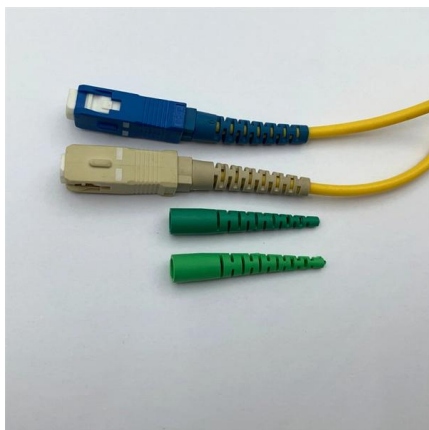
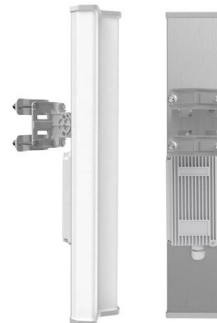


Aggregation Switch

An aggregation switch refers to a type of switch used to connect multiple ToR switches to a core switch/router in a cloud data center network. It enables high-bandwidth aggregation ports to be

Port Aggregation FAQs

Port Aggregation FAQs What is the benefit of aggregating ports? Port aggregation can increase maximum throughput, and allow for network redundancy. It does



Port Aggregation Configurations

Port aggregation is useful for implementing load balancing and provides a redundant link backup. To allow port aggregation, the basic configuration on all the ports must be consistent. The following list



Configuring Aggregation and Access Switches to Be Managed by the

Switch the management VLAN of the aggregation and access switches to the new management VLAN and configure static IP addresses. The following example describes how to

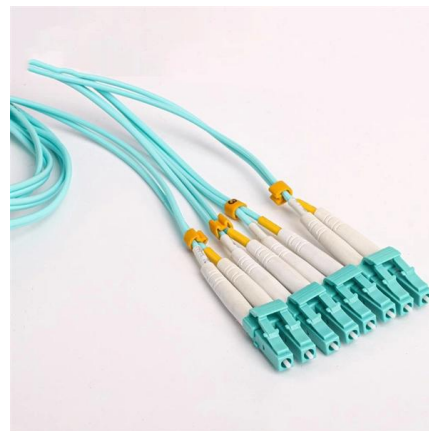


The Network DNA: Networking, Cloud, and Security

Master networking, cloud, and security with in-depth analysis, tutorials, and research. Stay ahead of the curve with our expert tech blog.

CMU School of Computer Science

å 10 ä ,EURå fä , ? 10 ä ,EURç(TM)¾ 100
ä ,EURç(TM)¾å s 100 ä ,EURå f 1000 ä ,EURå
få s 1000 ä ,EURâ--<ä ,EUR 101
ä ,EURç(TM)¾é>¶ä



What Is an Aggregation Switch and How to Choose?

An aggregation switch is a network device that consolidates traffic from multiple access switches, wireless access points, or other edge devices and forwards it to



What is an Aggregate Switch?

What is an Aggregate Switch? Understanding Centralized Network Management An aggregate switch is a high-capacity network switch that consolidates connections from multiple



Port Aggregation: Boosting Throughput and Redundancy in Enterprise

Final Thoughts: Is Port Aggregation Right for You? Port aggregation offers significant benefits for enterprise networks, including higher throughput, improved redundancy, and efficient

What is Switch Aggregation, Its Role and Selection Advice

This article wraps up "what is switch aggregation" and suggestions for choosing an aggregation switch. By considering these factors, network administrators can make informed



What Is an Aggregation Switch and How to Choose?

As the physical part of the aggregation layer, aggregation switches typically play a crucial part in the overall network architecture. So, what exactly is an aggregation



In-depth analysis: What is an aggregation switch?

In many network constructions, we have all heard of switches. So do you really understand switches? Why are aggregation switches often overlooked?



Mastering Fortinet FortiSwitch for Network Professionals

VLANs & Port Management: Master the creation and configuration of VLANs and switch ports to segregate traffic and enhance network security and organization. Essential Switching Features:

Medium Branch Switch Configuration

this section of the guide will demonstrate how to configure a Aggregation switch with dual purposes, providing power and layer 2 access to



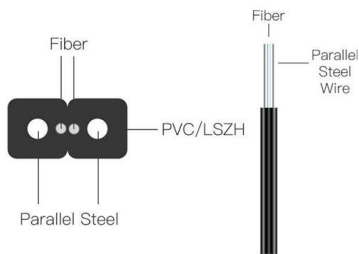
Everything You Need to Know About Aggregation Switch

A: Ubiquiti UniFi is a brand of networking equipment, including aggregation switches, that offers high-performance and easy-to-manage solutions



Port Aggregation FAQs

In what order should I configure port aggregation on my switches? You should be certain that configuration changes are first done on the most downstream switch,



What is an Aggregate Switch?

An aggregate switch is a high-capacity network switch that consolidates connections from multiple access switches, acting as a central point for managing network traffic and providing

Contact Us

For datasheets, pricing, or custom high-speed optical interconnect solutions, please visit:
<https://www.syropy.com.pl>