

Maldives OLT Optical Line Terminal 10G





Maldives OLT Optical Line Terminal 10G



Optical line terminals

Offering operator-specific 10G fiber platforms At the heart of a point-to-multi-point or passive optical network (PON) is the optical line terminal (OLT). Modern OLTs

Syrotech SY-GPON-4OLT-L3 Optical Line Terminal Loaded

The Syrotech Sy-Gpon-4olt-l3 Optical Line Terminal (Olt) is A High-Performance, Advanced Network Device Designed for Efficient & Scalable Fiber-To-The-Home (Ftth) Deployments.



What is ONU (Optical Network Unit)?

What is ONU? An ONU (Optical Network Unit) is a key device in Fiber-to-the-Home (FTTH) and other FTTx networks, operating within a Passive

40G-OCDMA-PON network architecture with optical line

40G-OCDMA-PON network architecture with optical line terminal (OLT), optical network unit (ONU), and remote node (RN).



Optical line termination

An optical line termination (OLT), also called an optical line terminal, is a device which serves as the service provider endpoint of a passive optical network.



1 PON GPON OLT: The Complete Guide to Choosing and

Discover everything about 1 Pon Gpon Olt, including setup guides for small businesses, scalable user limits, self-installation methods, and support for VLAN/QoS perfect for efficient single-fiber GPON



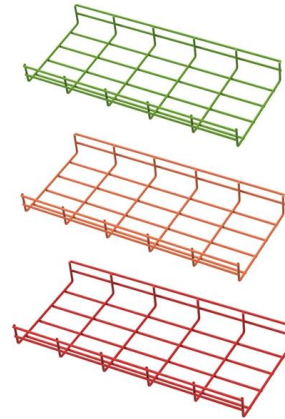
OLT Devices, High-Quality Optical Line Terminals

Explore our range of high-quality GPON, EPON, and XG (S)PON OLT products. Find the perfect Optical Line Terminal solutions for your network needs.



XGPL-16000

High-Performance 16-Port XGS-PON OLT with 40G/100G Uplink Capability. PLANET XGPL-16000 is a high-density 16-Port XGS-PON Optical Line Terminal



XGPL-16000

PLANET XGPL-16000 is a high-density 16-Port XGS-PON Optical Line Terminal (OLT) designed for next-generation fiber broadband access networks. It

Cisco Routed Passive Optical Network Deployment

Currently, these requirements are met by employing an Optical Line Terminal (OLT) chassis, which connects at the access layer of the network.



OLTs (Optical Line Terminals) , XGS-PON , Zyxel

With advanced signal-processing and seamless interoperability with existing GPON stacks, service providers can add 10Gbps symmetric service today and pivot to future technologies without going



GPON OLT Basics and Beyond: A Comprehensive

In today's rapidly evolving optical networking landscape, GPON (Gigabit Passive Optical Network) technology stands as the mainstream solution



Optical Line Terminal (OLT)

Cortina family of Optical Line Terminal (OLT) SoCs completes the end-to-end solutions for EPON and 10G-EPON applications. Our silicon devices have been

8-Port GPON OLT with 4 × Gigabit Combo, 4 × 1G SFP and 4 × 10G

Overview OLT3610-08GP4S GPON Optical Line Terminal (OLT) consists of 8× GPON ports, 4× GE COMBO ports, 4× GE SFP PORTS, 4× 10GE SFP+ ports, 1× CLI port, and 1× MGMT port. It is easy



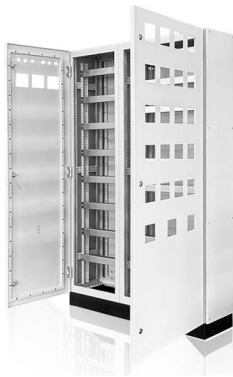
OLT (Optical line terminal) , G-PON (Gigabit passive optical network)

A gigabit passive optical network (G-PON) comprises optical line terminals (OLTs) and optical network units (ONUs), and Murata's lineup of products for use in OLTs is introduced here.



ZTE C300 Series SCTM Guide: OLT Control Board Architecture

ZTE C300 Series SCTM Deep Dive: Optimizing Carrier-Grade OLT Control & Switching Architecture The global expansion of ultra-broadband access networks is placing unprecedented



OLT

Our Optical Line Terminal (OLT) is the central controller of any Passive Optical Network--efficiently managing data, voice, and video across multiple

10G SFP+ OLT Module , Access Network , DAA , Harmonic

A 10G small form-factor pluggable (SFP) optical line terminal (OLT) to add passive optical network (PON) services for fiber-to-the-anything (FTTx).



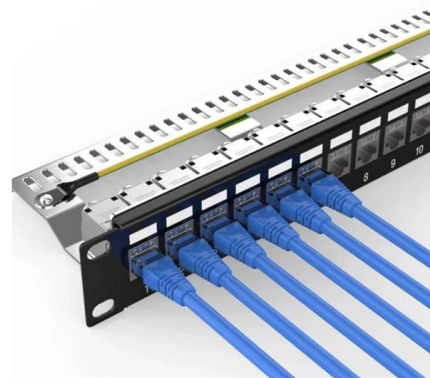
ZTE ZX10 C600 Optical Line Terminal

At the forefront of this evolution stands the ZTE ZX10 C600 Optical Line Terminal (OLT), a large-capacity optical access platform designed to meet

Cisco 10G Routed PON ONT Data Sheet



These 10G optical network terminals for fiber-to-the-premises applications can be managed remotely and are interoperable with the Cisco Routed PON solution. Three models offer a

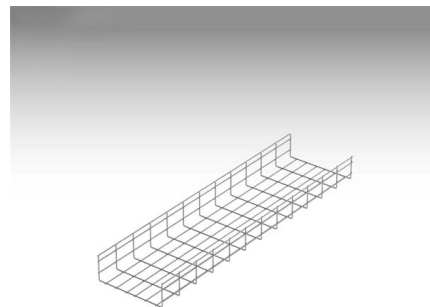


What is an Optical Line Terminal (OLT)?

Discover how an Optical Line Terminal (OLT) enables fiber-optic broadband, GPON, and XGS-PON networks for high-speed internet, IPTV, and VoIP services.

What is a Passive Optical Network (PON)? , Lightwave Online

From this central location, a single fiber-optic cable runs from the optical line terminal (OLT) to a passive optical beam splitter.



Grid Cable for marine and offshore applications



Optical Line Terminal SmartAX MA5800-X15 MA5800X17 10G OLT

Optical Line Terminal SmartAX MA5800-X15 MA5800X17 10G OLT MA5800 Provides GPON XG-PON XGS-PON and 10GE/2.5GE/GE Access

Guide to Optical Line Terminal (OLT)



Classifications:

In modern communication networks, optical line terminal (OLT) is the core device to realize point-to-multipoint (P2MP) in passive optical network (PON)



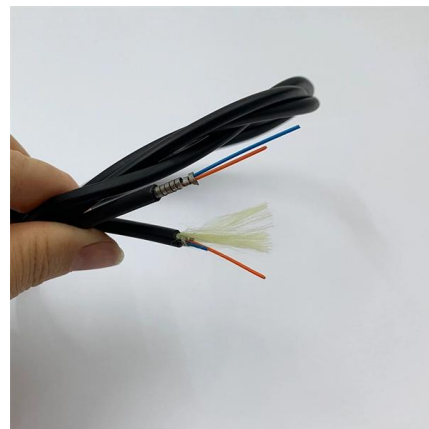
10G SFP+ OLT Module , Access Network , DAA , Harmonic

A 10G small form-factor pluggable (SFP) optical line terminal (OLT) to add passive optical network (PON) services for fiber-to-the-anything (FTTx).



Cisco NCS1K-OLT-C Optical Line Terminal 400G C-band QSFP-DD

Deploy Cisco NCS1K-OLT-C 1010 Optical Line Terminal with 400G line rate and 2x QSFP-DD for scalable C-band DWDM transport. Ensure high-capacity backbone and simple integration.



Product Photography



Guide to Optical Line Terminal (OLT) Classifications: Detailed Types

In modern communication networks, optical line terminal (OLT) is the core device to realize point-to-multipoint(P2MP) in passive optical network (PON) architecture. The OLT is responsible not only for



EPON, GPON, 10G EPON, 10G GPON OLT: How do

The Basic Concept of OLT OLT is optical line terminal. The PON network consists of OLT, ODN and ONU. OLT belongs to the service node side of



Pre-Terminated Patch Panel

- Standard 19" width
- Max 144 fibers in 1U
- MPO/Fusion Dual-Purpose



Removable Cable Management Tray



Transparent Front Cover



High-Quality Matte Coated Steel

OLT (Optical line terminal) , G-PON (Gigabit passive

A gigabit passive optical network (G-PON) comprises optical line terminals (OLTs) and optical network units (ONUs), and Murata's lineup of products for use in

Contact Us

For datasheets, pricing, or custom high-speed optical interconnect solutions, please visit:
<https://www.syropy.com.pl>