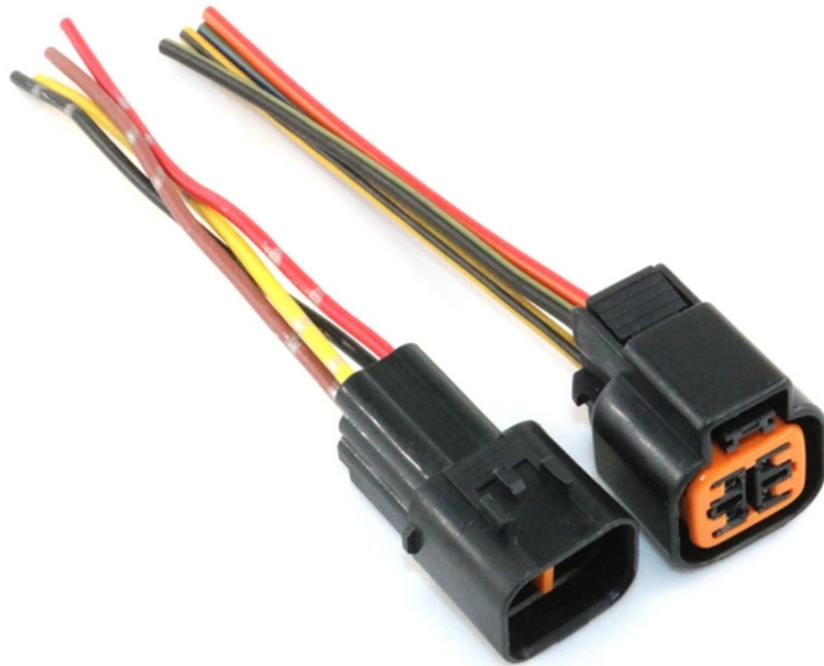


Making a mess with the electrical distribution box





Overview

Specific measures include: strictly follow the specifications for the installation and layout of the distribution box; strengthen electrical connection and grounding inspections to ensure that the wiring is firm and the grounding is good; regularly clean and inspect the. The fuse box is the heart of your home's electrical system, ensuring safe and reliable power distribution. When they start tripping, overheating, or making strange noises, it's more than just an inconvenience - it's your home's cry for help. Do not touch live parts, turn off the corresponding power switch to avoid the risk of electric shock.



Making a mess with the electrical distribution box

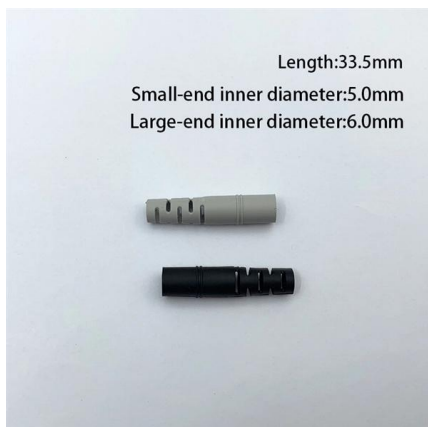


How to solve the problem of distribution box?

If you're not sure, it's best to contact a professional electrician for repairs. Preventive measures: Once the fault is resolved, regular inspection and maintenance of the distribution box is recommended to

Understanding Distribution Boxes: A Comprehensive Guide

A distribution box, also known as a power distribution box or electrical distribution box, is used to distribute electrical power safely to multiple

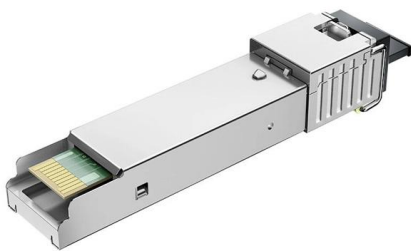


How to solve and prevent the failure of the distribution

To sum up, qualified construction and maintenance operations, in conjunction with standards and safety measures, can effectively prevent and solve distribution box

What Is an Electrical Distribution Box and Why Is It

An electrical distribution box distributes power safely, prevents overloads, and protects circuits, ensuring efficient and reliable electrical systems.



Where Is the Distribution Box Located and How to Find It

Learn where distribution boxes are typically located in homes and get step-by-step instructions for finding your electrical panel. Includes safety tips and

How to Install a Distribution Box--A Comprehensive

What is a Distribution Box? First of all, you need to have a simple understanding of the definition of a distribution box, and make it clear which kind



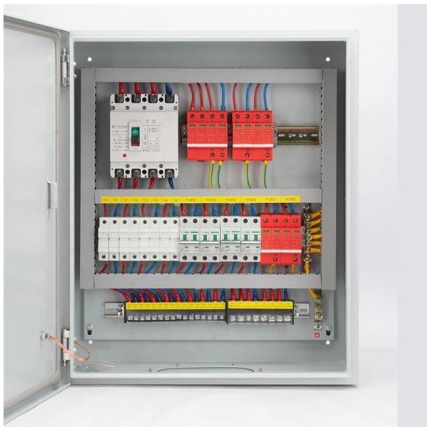
Common Issues with Distribution Boards and How to Address Them

However, like any other component of an electrical system, distribution boards can develop issues over time, affecting electrical safety and performance. We will explore some of the



The Importance of Distribution Boxes in Electrical Systems

Learn more about how distribution boxes play a critical role in the safe and efficient operation of electrical systems.

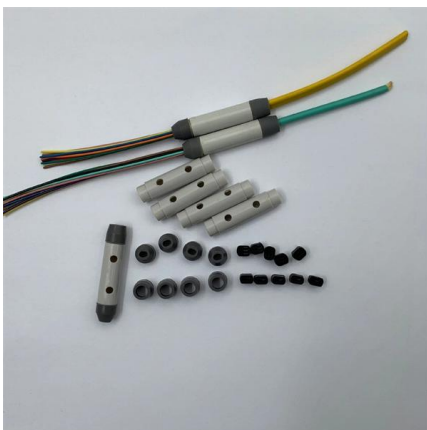


Common troubleshooting of distribution boxes: analysis of causes of

Distribution boxes are the unsung heroes of our electrical systems, quietly managing power until something goes wrong. When they start tripping, overheating, or making strange noises, it's more

on video How to Wire a Home Distribution Box

The above mentioned electrical wiring accessories and protective devices are used to control and distribute electric supply (safely to connected electrical appliances)



Should I be concerned about messy wiring in breaker box?

We recently opened our breaker box to add two new circuits to an area we were finishing in our basement. The internal wiring seems haphazard at



How to Troubleshoot a Newly Installed Electrical Box

If you just installed your own new electrical box, and things aren't working properly, it's not fun. The good news is that most issues are easy to

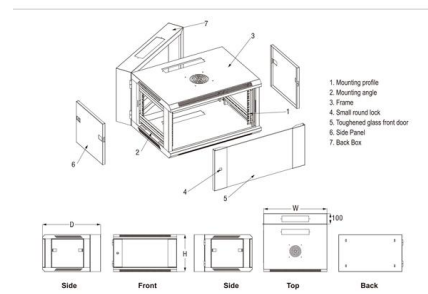


How to Install a Cable Distribution Box Safely and

In modern electrical systems, cable distribution boxes (also known as electrical distribution boxes or distribution boxes) play a crucial role as the key

Distribution Box Installation: A Complete Guide to Safe

The distribution box, often referred to as a breaker box, fuse box, or electrical panel, is a critical component of any electrical system. It acts as the central hub for



What Are Common Fuse Box Problems (With Solutions)

Discover common fuse box problems that can disrupt your electrical system. Learn the signs of fuse issues and how to address these box problems.



Electrical Distribution Box Installation Mistakes

The Electrical Distribution Box is a very important part of the power system, improper installation will cause a lot of danger and loss. Here are some things that go



15 Electrical Mistakes Homeowners Make , Family

Making Connections Outside Electrical Boxes Mistake: Not using an electrical box. "Electrical boxes, sometimes referred to as junction boxes, protect

A Step-by-Step Guide to Wiring an Electrical Panel Box

Find out how to properly wire an electrical panel box with a comprehensive diagram and step-by-step instructions.



The installation requirements for the distribution box

A distribution box is the heart of any electrical system. It takes the incoming power and safely distributes it to different circuits throughout your



The Common Fuse Box Problems To Be Aware Of

In this blog post we look at the most common fuse box problems to look out for. If you spot them in your home, then make sure you call in an expert, like the team

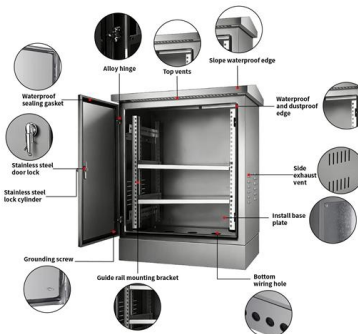


How to Choose a House Distribution Box , CHINT global

A well-chosen distribution box ensures the safety and efficiency of your household electrical system. This article guides you through selecting a

electrical distribution box preventive maintenance check list

Remove dust and debris from the enclosure and components. Clean any corrosion from terminals and connections. Ensure that ventilation openings are clear and unobstructed. Use appropriate cleaning



What Is an Electrical Distribution Box? A Complete Guide

An electrical distribution box is a centralized unit responsible for distributing electrical power across multiple circuits within various



Contact Us

For datasheets, pricing, or custom high-speed optical interconnect solutions,
please visit:

<https://www.syropy.com.pl>