

Maintaining a 25G SD-WAN device in Congo





Maintaining a 25G SD-WAN device in Congo

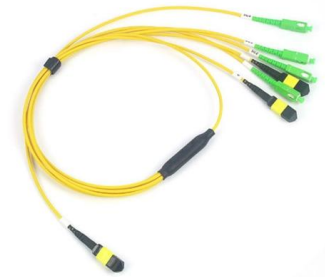


5 Best Practices for Implementing Secure and Effective

Since each SD-WAN device must be supported by a full security stack, the end result is deploying and operating several solutions at each location.

SD-WAN Device Upgrade

We are going to go over the steps to upgrade our head-end device running Cisco IOS XE SD-WAN (in controller mode). We will cover the procedure



Cisco SD-WAN

You can now save documents for easier access and future use. Saved documents for this product will be listed here, or visit the My Saved Content page to view and manage all saved

Cisco Catalyst SD-WAN Design Guide

It discusses the architecture and components of the solution, including control plane, data plane, routing, authentication, and onboarding of SD-WAN devices. It covers redundancy of SD



SD-WAN Mastery: The Ultimate 25+ Command Cheat Sheet For

Understand the core architectural components of an SD-WAN deployment and their security implications. Master the command-line interface (CLI) operations for configuring and troubleshooting



What Devices Are Needed for SD-WAN Technology?

The best way to successfully deploy SD-WAN technology into your organization is by partnering with a seasoned Managed Services Provider with



Cisco Catalyst SD-WAN Monitor and Maintain Configuration Guide

Read Me First Related References Cisco Catalyst SD-WAN Control Components Compatibility Matrix and Server Recommendations Cisco Catalyst SD-WAN Device Compatibility



Huawei SD-WAN Support Guide, Manuals & PDF - Huawei

SD-WAN: Access product manuals, HedEx documents, product images and visio stencils.

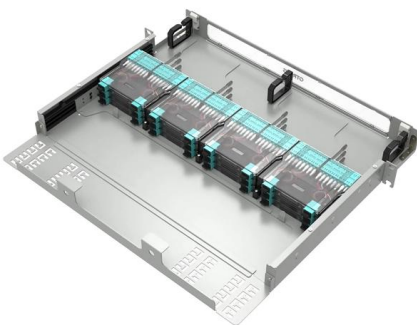


Cisco Catalyst SD-WAN High Availability Configuration

To provide a resilient control plane, the Cisco Catalyst SD-WAN Overlay Management Protocol (OMP) regularly monitors the status of all Cisco

Applications of SD-WAN Reference Architecture

Fundamentals of SD-WAN SD-WAN modernization is not just about replacing end-of-life hardware or software-- it is a business solution. Organizations are adopting DX because the way business users



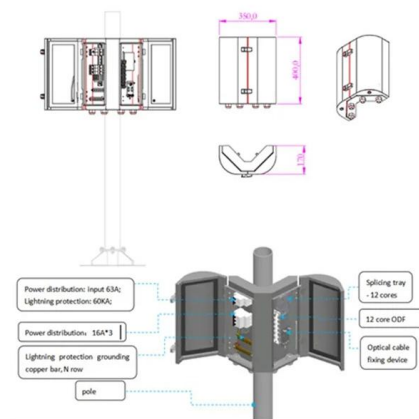
What is SD-WAN Security? A Comprehensive Guide to

Instead of focusing on maintaining security features at each endpoint, the centralized SD-WAN controller enhances network-wide security element



Cisco Catalyst SD-WAN Design Guide

WAN Edge devices onboard in a similar manner but drop the transient SD-WAN Validator connection and maintain DTLS/TLS connections with the SD-WAN Manager and Controllers.

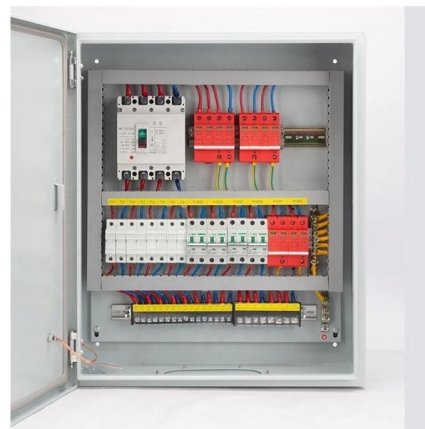


About SD-WAN

If you are an existing customer, you can choose to either let PAN-OS overwrite any existing virtual routers or use a new virtual router and new zones

What is SD-WAN (Software-Defined WAN)? Benefits

SD-WAN is a virtual network architecture that eliminates the need for traditional hardware-based configurations. Discover how SD-WAN optimizes network



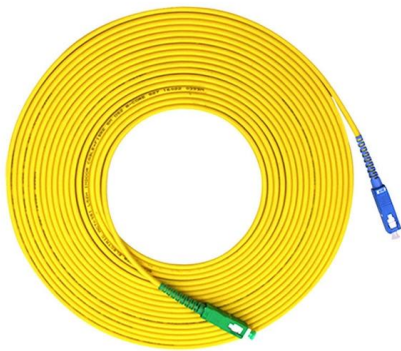
Cisco Catalyst SD-WAN Design Guide

It discusses the architecture and components of the solution, including control plane, data plane, routing, authentication, and onboarding of SD-WAN devices. It covers redundancy of SD-WAN components



SD-WAN: What It Is and How It Works

Learn how an SD-WAN (software-defined wide-area network) works and see what advantages this network type has over traditional WANs.



What SD-WAN devices do I need in an SD-WAN

SD-WAN controllers and routers constitute some of the SD-WAN devices you'll need in your SD-WAN deployment. Find out how these appliances

Cisco SD-WAN Migration Guide

Physical/L3 Connectivity WAN - Connect to SD-WAN Edge router and CE router LAN - Connect to Distribution/Access switches WAN Advertisements IN - From SD-WAN Edge router,



Business SD-WAN , Orange Business République Démocratique du Congo

Le SD-WAN permet d'interconnecter de multiples sites, quelle que soit leur technologie de connectivité, offrant ainsi un réseau agile et flexible. Il garantit une meilleure performance des applications, une



SD-WAN Best Practices , Kentik Blog

SD-WAN is a reliable, fast, and secure WAN network. In this guide, you'll learn some best practices for planning, monitoring, analyzing, and managing modern SD-WANs.

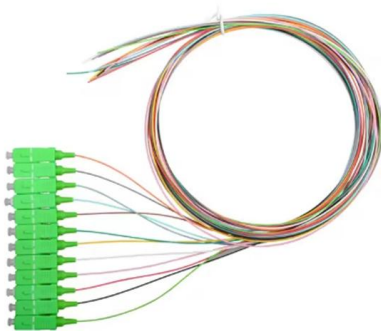


Migrating to and maintaining an SD-WAN solution

Migrating to and maintaining an SD-WAN solution doesn't have to be that migraine-inducing project everyone dreads. The right approach can transform it from "technical nightmare" to

A deep dive into SD-WAN troubleshooting and monitoring

Use these steps to conduct SD-WAN troubleshooting and pinpoint potential issues that can arise in software-defined WAN environments.



Harnessing the Potential of 5G With Secure SD-WAN

By leveraging purpose-built security ASICs, as opposed to commercial processors, Fortinet's Secure SD-WAN solution is the only device



Cisco Catalyst Software-Defined WAN (SD-WAN) FAQ

Cisco SD-WAN is a cloud-delivered overlay WAN architecture connecting branches to data center and multicloud environments through a single fabric. This FAQ answers questions about



Best Practices to Follow When Deploying SD-WAN

To get the most out of your SD-WAN infrastructure post-ins-tallation, you will need to ensure that the team managing the solution has in-depth knowledge of both the technology and the vendor's

What is SD-WAN (Software-Defined WAN)? Ultimate Guide

SD-WAN explained Software-defined WAN is a technology that uses software-defined networking concepts to distribute network traffic across a wide



Contact Us

For datasheets, pricing, or custom high-speed optical interconnect solutions, please visit:
<https://www.syropy.com.pl>