

MTP Interface Optical Module





MTP Interface Optical Module



40G QSFP+ Optical Module Interfaces

The interface of the 40G SR4 QSFP+ optical module is MPO/MTP. Its operation involves converting electrical signals to optical signals at the transmitting end using a laser array.

Product Spec Sheet G909024GPNDDU100F

G909024GPNDDU100F EDGETM MTP® trunks provide the backbone of the EDGE solution. With non-pinned MTP connectors on both ends, these fiber trunk cable assemblies are



MTP®/MPO-8/12/24: Application and Differences?

In QSFP deployments, MTP®/MPO-24 trunks provide a clear density advantage, offering up to three times the panel density of MTP®/MPO-8 and eight

EDGE8® Adapter Panels, MTP® , Corning

These MTP multi-fibre connectors provide data centres with the fastest and simplest installations for serial or parallel optic transmissions, with which data rates of 40G, 100G, 400G or 800G can be



MTP/MPO Transceivers

MTP/MPO Transceiver Modules are an essential piece of your fiber or copper network. Fiber optic transceivers or optical modules as often called, connect



Optical Transceiver vs. Fiber Optic Module: What's the Difference

Introduction Engineers, purchasing managers and installers often see the terms optical module and fiber optic module used interchangeably -- and that causes confusion. This article



1U 64-Fiber MTP/MPO to LC Sliding Patch Panel with 4 x 16-Fiber

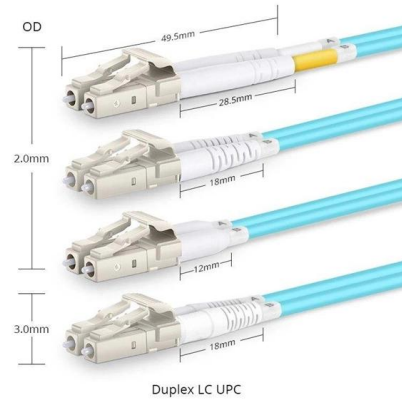
Rayoptic 1U 64-fiber MTP/MPO to LC sliding patch panel features 4 x 16-fiber cassette modules, 32 LC duplex ports, rear MTP/MPO ports, and a sliding tray for high-density data center





The Complete Guide to MTP® Connectors: High

The Definitive Guide to MTP® Connectors and Their Broader Implications In the rapidly evolving world of fiber optics and high-density

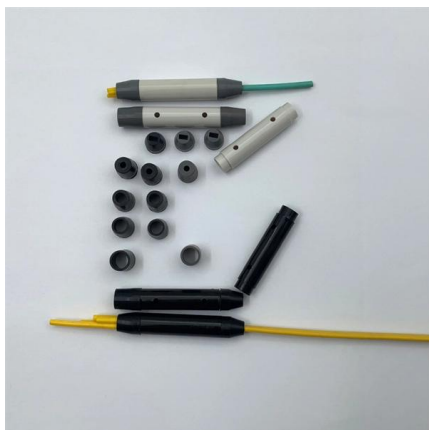
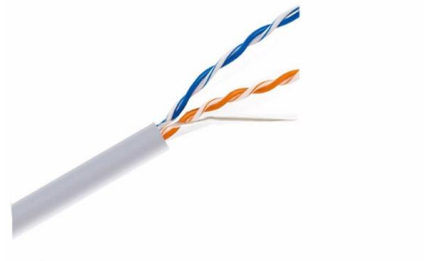


Comparison of Optical Module Connectors: SC vs LC vs

SC vs LC vs MTP/MPO: Performance Characteristics All three fiber optic connectors play a good role in the use process. The SC connector has

24-Fibers MTP®/MPO Female LSZH Multimode Fiber Loopback

MTP® Loopback modules are used widely within testing environment especially within parallel optics 100G networks. Devices allow verification and testing of transceivers featuring MTP® interface -



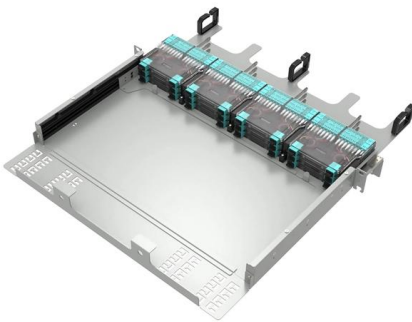
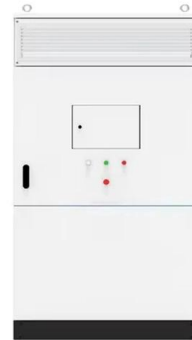
MPO/MTP Connectors - MapYourTech

MPO/MTP connectors are high-density multi-fiber optical connectors based on the MT (Mechanical Transfer) ferrule technology. They enable



**Cisco QSFP-100G-SR4-S Compatible
100GBASE-SR4 QSFP28 850nm 100m MMF
MTP**

Cisco QSFP-100G-SR4-S compatible optical transceiver is a parallel 103.1Gbps Quad Small Form-factor Pluggable QSFP28 module for use in 100GBASE Ethernet. QSFP28 SR4 provides 100Gb/s

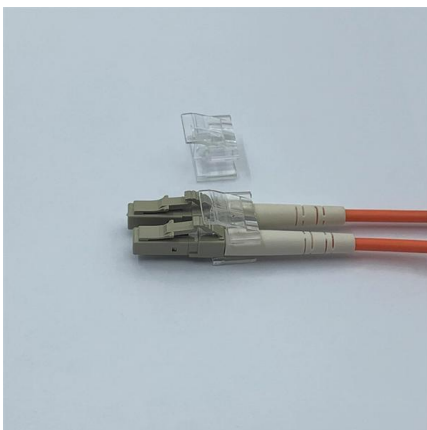


What is an MTP®/MPO Fiber Connector and How Does

Why MTP® fiber connector perform better than MPO connector, and why data centers prefer to use MTP® fiber cables in high-density cabling? Find

Product Spec Sheet G757512QPNDU100F

G757512QPNDU100F EDGETM MTP® trunks provide the backbone of the EDGE solution. With non-pinned MTP connectors on both ends, these fiber trunk cable assemblies are



MTP/MPO Transceivers

Fiber optic transceivers or optical modules as often called, connect ethernet and optical cords together. MTP/MPO connectors are the most common type of



Custom 100G QSFP28 PSM4 Module , MPO Breakout , WolonFiber

Enable dense single-mode breakouts. WolonFiber's 100G QSFP28 PSM4 utilizes an MTP/MPO APC interface and four 1310nm DFB lasers for seamless 4x25G routing.



How do you connect SFP to fiber optic cable?

To connect a Small Form-factor Pluggable (SFP) module to a fiber optic cable, follow these steps:

1. Ensure that the SFP module is

The Ultimate Guide to SFP Modules (2026): Types,

What is an SFP? SFP (Small Form-factor Pluggable) is a compact, hot-pluggable network interface module used to connect network devices (switches, routers,



Optical Solutions

supports MTP/MPO interfaces and LC output ports. They have a modular, scalable design that provides flexibility. o 5 mating cycles) VersaBeam MT Interconnects Offer a high-density optical interconnect



MTP Connector

performance. The MTP® connector enables high density, cost-effective solution like Plug & Play™, EDGE?.

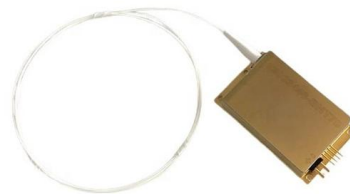


Product Catalogue MPO / MTP® Solution

For direct connections between QSFP+ transceivers both MTP® connectors should be un-pinned female type, while for the connection with other MTP/MPO connectors, male pinned or female un-pinned

Product Spec Sheet G757524QPNDU100F

G757524QPNDU100F EDGETM MTP® trunks provide the backbone of the EDGE solution. With non-pinned MTP connectors on both ends, these fiber trunk cable assemblies are designed to



The New Era of 800G Optical Transceiver

Explore the evolution of 800G optical transceivers, their architectural interfaces, development trends, and the impact of AI deployment.



SFP Fiber Optic Connector Types: LC, SC, MPO Explained

MPO/MTP connectors are multi-fiber connectors used in high-density cabling systems rather than as direct interfaces on standard SFP modules. They are designed to carry multiple fibers within a single

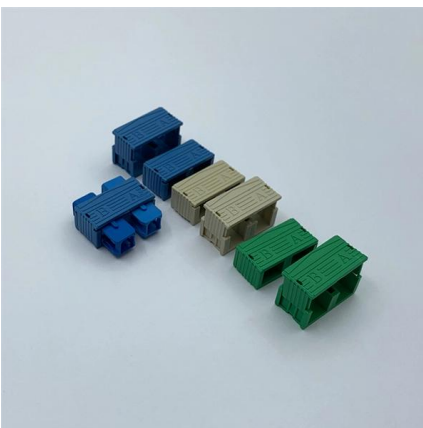


16-103_NEUTRIK_White Paper opticalCON MTP_TXT dd

QSFP transceivers contain a multi-fiber interface to connect MPO or MTP® cables directly, thereby eliminating breakout cables. This enhances the connection and reduces the risk of polarity-based

Custom 100GBASE-SR4 QSFP28 Module , MPO 100m/300m

I-Parallel Interface: Utilizes a standard MTP/MPO-12 connector to deliver 4x25Gbps native parallel optical lanes. Reach Configurations: Supports standard 100m routing on OM4 fiber, with specialized



A Comprehensive Guide to 400G OSFP Ethernet

Use Cases 800G Switch to 200G QSFP56 Switch: The OSFP 400G 2xSR4 module is connected using two direct-attach optical fiber links. Each MTP



Contact Us

For datasheets, pricing, or custom high-speed optical interconnect solutions, please visit:

<https://www.syropy.com.pl>