

Low-voltage distribution box installation process





Overview

Low-voltage installation requires careful design, wiring, grounding, protection, testing, documentation, and acceptance checks to ensure safe and reliable electrical operation. Make sure to reserve enough power outlets inside the box—at least three 5-port outlets, or install a dedicated power module. The recommended size for the box is 400mm × 300mm, which makes it easier to place equipment and. Whether you are an electrical contractor or a construction brigade, knowing how to properly and safely install distribution boxes is the basis of ensuring the safe operation of the entire system. Ensure location of installation should be adequately ventilated and free from dipping water, water logging, sources of heat, etc. You must make safety your top priority when working with low voltage distribution boxes.



Low-voltage distribution box installation process

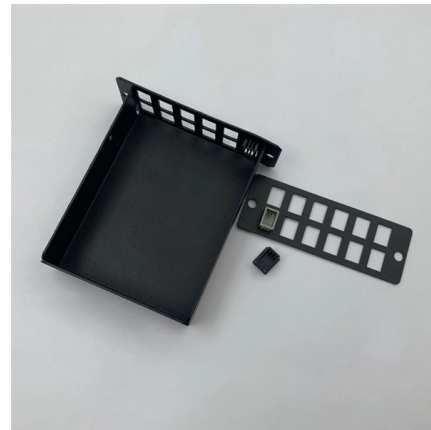


Low-Voltage Power Distribution and Electrical Installation Technology

Which is why products and systems featuring maximum safety and optimum efficiency are in demand. This comprehensive portfolio for low-voltage power distribution and electrical installation technology

Low-voltage distribution networks

In cities and large towns, standardized LV distribution cables form a network through link boxes. Some links are removed, so that each (fused) distributor leaving a substation forms a branched open-ended



- IP65/IP55 OUTDOOR CABINET
- WATERPROOF OUTDOOR CABINET
- 42U/27U
- OUTDOOR BATTERY CABINET

How to Install a Cable Distribution Box Safely and

In modern electrical systems, cable distribution boxes (also known as electrical distribution boxes or distribution boxes) play a crucial role as the key

Low-voltage electrical installations

Fig. 2.3. Front plate of the station with a schematic diagram of the network and distribution of measuring, signaling and control elements: 1 - circuit breaker of station, 2 - voltage regulator, 3 - switch of



Planning and installation of the low voltage switchgear

The following aspects should be considered in particular when planning low-voltage main distribution system: Point No 1 - Maximum permissible



Basics in low voltage distribution equipment

Low voltage distribution equipment typically operates at less than 600 volts; in contrast, medium voltage equipment affords a wider range of 600 to 38,000 volts. This paper provides a basic overview of the



How to Install a Distribution Box--A Comprehensive

Before starting the installation, finding a proper place for putting the distribution box is crucial, because it largely decides the safety and convenience





The installation requirements for the distribution box

Learn how to install a distribution box safely and correctly. Covers wiring, placement, standards, and expert tips for a compliant setup.



Waterproof and dustproof, reliable and safe

The outer classic sink design allows the sealing ring of the cabinet and door to be seamlessly compressed without leaving a trace of gaps



How to choose the right low voltage distribution box

Choose the right low voltage distribution box by matching capacity, safety, and environment to your needs for reliable and efficient electrical protection.

Low-Voltage Power Distribution and Electrical Installation Technology

The planning and operation of electrical power distribution systems are becoming more complex, and the technical demands placed on the underlying systems and products are rising - in particular with



An Extensive Library of Self-Developed Products



Low Voltage Distribution Panel: Guide for LV Distribution

A low-voltage distribution panel must match the actual site duty. Assessing loading, defining the right specification points, and accounting for the installation and maintenance factors



How to Install HV/LV Switchgear: Full Process & Global

Master high & low voltage switchgear installation with this expert guide. Learn unboxing, setup, busbar connections, and global standards for



ptb_AFSEC_low_voltage_en_lay4

Acknowledgements This AFSEC Technical guidelines for Low Voltage Electrical Installations was developed by the AFSEC Technical Committee 64 with the support of AFSEC Secretariat; PTB

Distribution switchboards

Distribution switchboards, including the Main LV Switchboard (MLVS), are critical to the dependability of an electrical installation. They must comply with well-defined standards governing



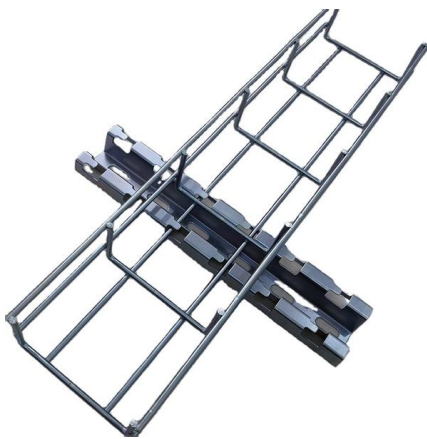
Low Voltage Installation: Wiring & Cabling Full Guide

Learn the fundamentals and best practices of low voltage wiring to enhance the safety and efficiency of your electrical installations.

Low-Voltage Distribution Box Installation Tips



Today, I'd like to share some details about installing a low-voltage distribution box. Make sure to reserve enough power outlets inside the box--at



Low Voltage Distribution Operation & Maintenance Manual Panel Boards

All safety codes, safety standards and/or regulations must be strictly observed in the installation, operation and maintenance of this equipment. Only authorized personnel should be allowed to work

Small distribution box installation steps

The steps to install a small distribution box include selecting a suitable location, installing the base, placing the distribution box, connecting the



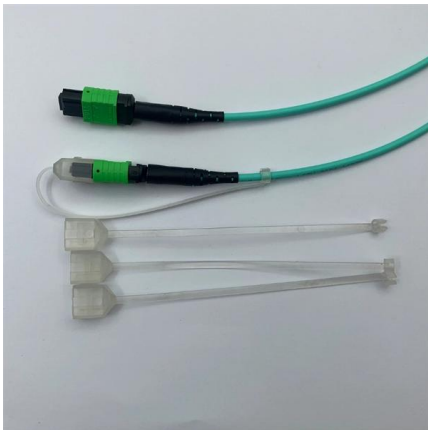
Design requirements and standards for low voltage

You should always start with a site assessment before installing a low voltage distribution box. Walk through the area and look for hazards like water,



MV/LV Power Substations Design and Schematics

2. Low voltage substations For loads up to about 300kVA the power is usually provided from the local supply authority's network at 400V. As for MV

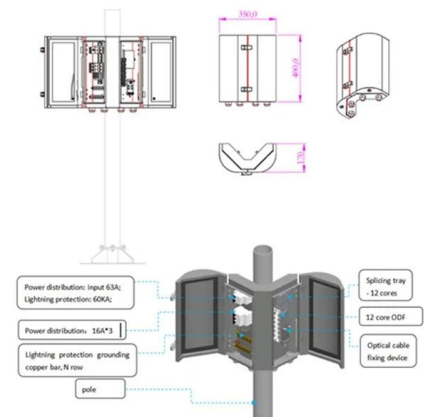


Low-Voltage Installation: Key Precautions and Acceptance Standards

Low-voltage installation is the process of installing electrical distribution, wiring, protection devices, grounding, panels, control circuits, and related equipment for building, industrial,

Installation and Wiring of High and Low Voltage Explosion-Proof

Generally, professional electricians should handle the wiring of explosion-proof distribution boxes, as they possess the necessary skills and safety equipment. In non-urgent cases,



Distribution Board Installation Guide

This document provides guidance on installing distribution boards. It discusses selecting a wiring system, protecting cables, safety precautions, technical



Underground Installation of Low Voltage Distribution Boxes

Low voltage distribution cabinets (LVDCs), also known as distribution cabinets, are essential infrastructure components that play a critical role in modern urban underground electrical distribution



Contact Us

For datasheets, pricing, or custom high-speed optical interconnect solutions, please visit:

<https://www.syropy.com.pl>