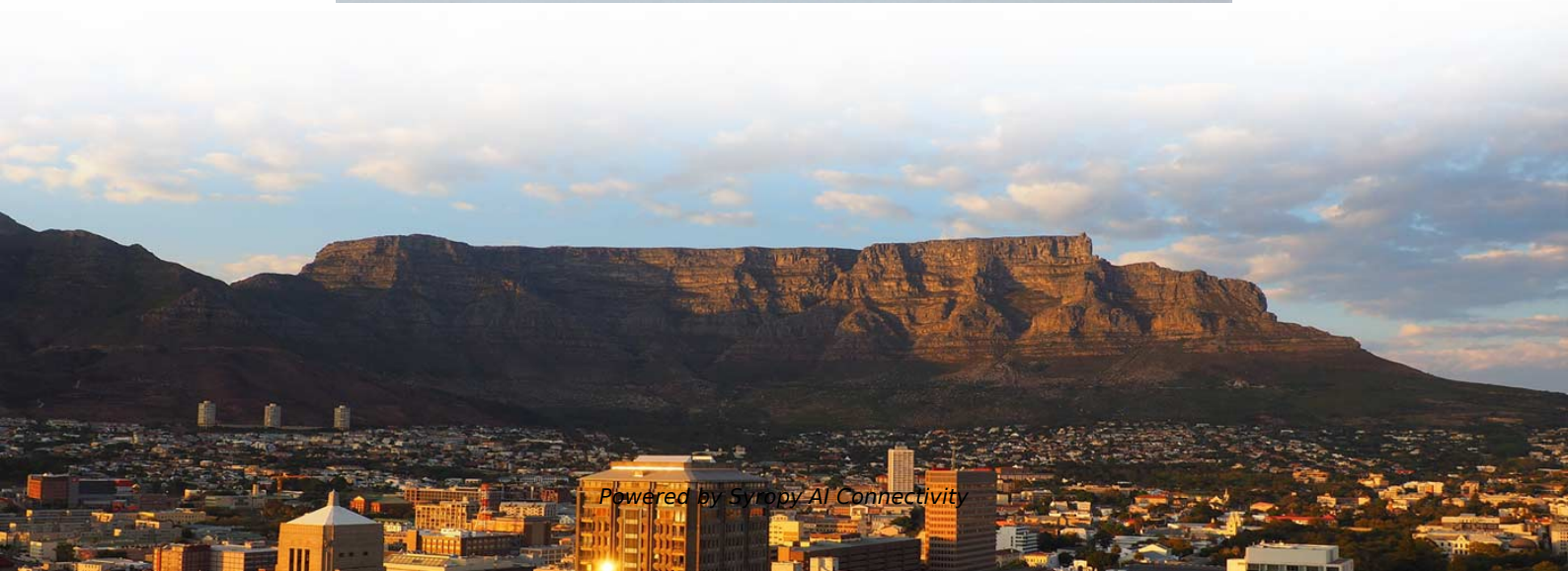


Low-voltage complete equipment inspection system





Low-voltage complete equipment inspection system



RG 105 Inspection of Low Voltage Electrical Installations

The inspection body shall make it clear to those seeking the inspection body's services where it may be necessary to close down or otherwise de-energise and isolate equipment in order to complete the

AEC Guidelines

Inspect adequacy and correct labeling of circuits, fuses, protective devices, switches, isolators, terminals, equipment/systems, especially multi-source equipment/systems;

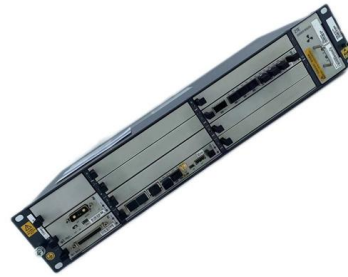


Electrical test equipment for use on low voltage electrical systems

This document provides advice and guidance on how to achieve this. This fourth edition includes current test equipment and references and links to further guidance have been updated. The

Everything you need to know about mandatory low-voltage inspections

In this article, you will find all the information on inspections of low-voltage installations, including legal obligations, checkpoints and benefits. What is a low voltage installation inspection and why is it



ELECTRICAL EQUIPMENT INSPECTION (EEI) CRITERIA GUIDE

It is also not the only things an inspector will examine or question a visitor. For a more complete list of these concerns please visit the above cited DOE web site. See appendix A for an electrical

Testing and maintaining tools and equipment

Everyone likely to be affected by electrical work must be kept safe with tools, testing equipment and personal protective equipment inspected and tested regularly.



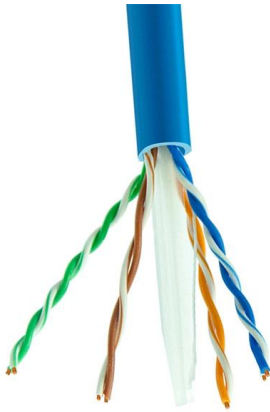
Ontology model of inspection record of low-voltage equipment in

In the power system, distribution is an important part, which is an important link between users and power supply departments. The economic, safe and stable operation of the distribution network plays



Understanding Electrical Inspection and Testing , ESUK

This blog focuses on electrical safety inspection and testing in relation to low voltage systems and includes requirements for electrical installations and also the in



What Are the Maintenance Inspections for Electrical

What Are the Maintenance Inspections for Electrical Equipment in High-Voltage Power Distribution Systems?. Systematically learning this knowledge can help

Guidelines to Visual inspection of Electrical Installations

What is important to look during this inspection? In general terms we are inspecting the installation with regard to personal safety, equipment age,



Automated Quality Inspection of High Voltage Equipment

Also, cloud services providers are continuously releasing out-of-the-box or easily adaptable solutions supporting visual inspection. This paper presents how we used image



Inspection, Test and Measurement Procedures for LV

Major inspection should be scheduled for power plant shutdowns and concentrate for low voltage switchboards on identifying contact wear, correct



VOLUME 04: TESTING OF ELECTRICAL LV INSTALLATION I

Principal Executive Director Our motto of preparing these documents under the series "Safety in Electrical Low Voltage Installations" is to reduce fire cases due to electrical faults and electrocution

Electrical Inspection

A leading authority in technical safety, quality, and environmental protection, with a strong commitment to excellence in every aspect of its operations.



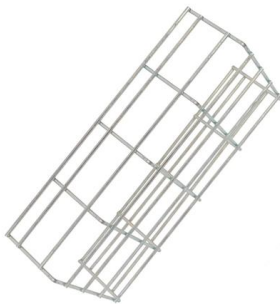
LV ELECTRICAL SYSTEMS TESTING

Testing & Commissioning Services Through our low voltage testing and commissioning services, we help ensure that your electrical installations,

Low Voltage Testing Laboratories



Our laboratories conduct a wide range of low voltage testing services for low voltage equipment, including short-circuit, arcing, load switching and other power testing .



Low Voltage Circuit Breaker Testing and Inspection

1.3 VISUAL INSPECTION OF EQUIPMENT Remove the circuit breaker arc chutes and phase barriers to perform a complete visual inspection of moving main and arcing contacts, and

Low Voltage Electrical Installations: A Practical Guide

Low voltage installations refer to electrical systems operating at voltages of 1,000V or less in AC and 1,500V or less in DC. These systems are common in homes,



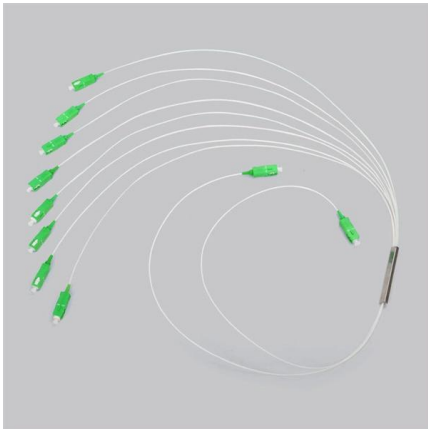
Essential Maintenance Checklist for Low Voltage Electrical Equipment

Follow this essential maintenance checklist to extend the lifespan, boost safety, and reduce downtime for your low voltage electrical equipment.



BioPreferred

I buy for the federal government Federal law, the Federal Acquisition Regulation, and Presidential Executive Orders direct federal agencies and their contractors to



Three most important routine tests for successful

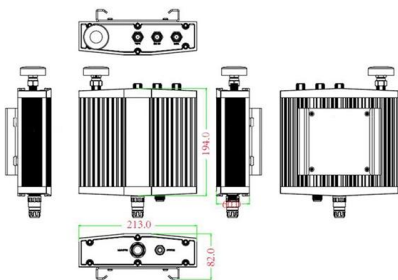
Three most important routine tests for successful verification of a low voltage switchgear By Edvard Csanyi Last updated on December 26th, 2025 ?

Low Voltage Installation Inspection , AE , TÜV Rheinland

Testing and inspection for complete low voltage installations Low voltage installations can be found in a variety of environments including industrial and construction settings, private and commercial real



Mechanical drawing



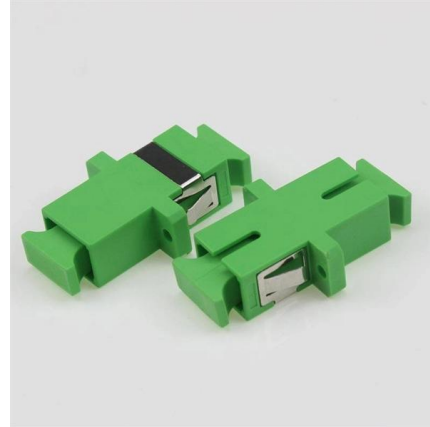
Guide to quality inspection of low voltage switchboards

Inspection during manufacturing The reasons for performing inspection during the manufacturing process is the complexity of some equipment

LV ELECTRICAL SYSTEMS TESTING



Through our low voltage testing and commissioning services, we help ensure that your electrical installations, switchgear, and distribution networks are functioning



Safe Work Practices on Low Voltage and Mechanical Apparatus

Summary This work instruction supports the Power System Safety Rules and its requirements assembled under Work on Low Voltage and Mechanical Apparatus - Category 4 and describe safe

Everything you need to know about mandatory low-voltage inspections

Everything you need to know about mandatory low-voltage inspections Low-voltage installations are essential for the electrical operation of homes, businesses and industrial environments.



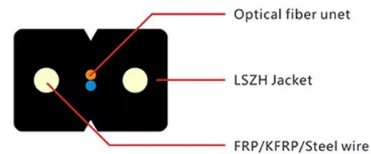
Safety Testing of Low-Voltage Switchgear and Controlgear Assemblies

After a transitional period of just over four years, professional planning, installation and testing of low-voltage switchgear and controlgear assemblies has been required to comply with the stipulations set



Inspection and Test Procedures for LV Cables

Cables, Low-Voltage, 600 Volt Maximum 1. Visual and Mechanical Inspection Compare cable data with drawings and specifications. Inspect



Electrical Inspection Checklists

Electrical Inspection Checklists This pdf contains 77 electrical inspection checklists taken from the 2014 Electrical Inspection Manual with Checklists. The checklists are in PDF format and can be completed

Contact Us

For datasheets, pricing, or custom high-speed optical interconnect solutions, please visit:
<https://www.syropy.com.pl>