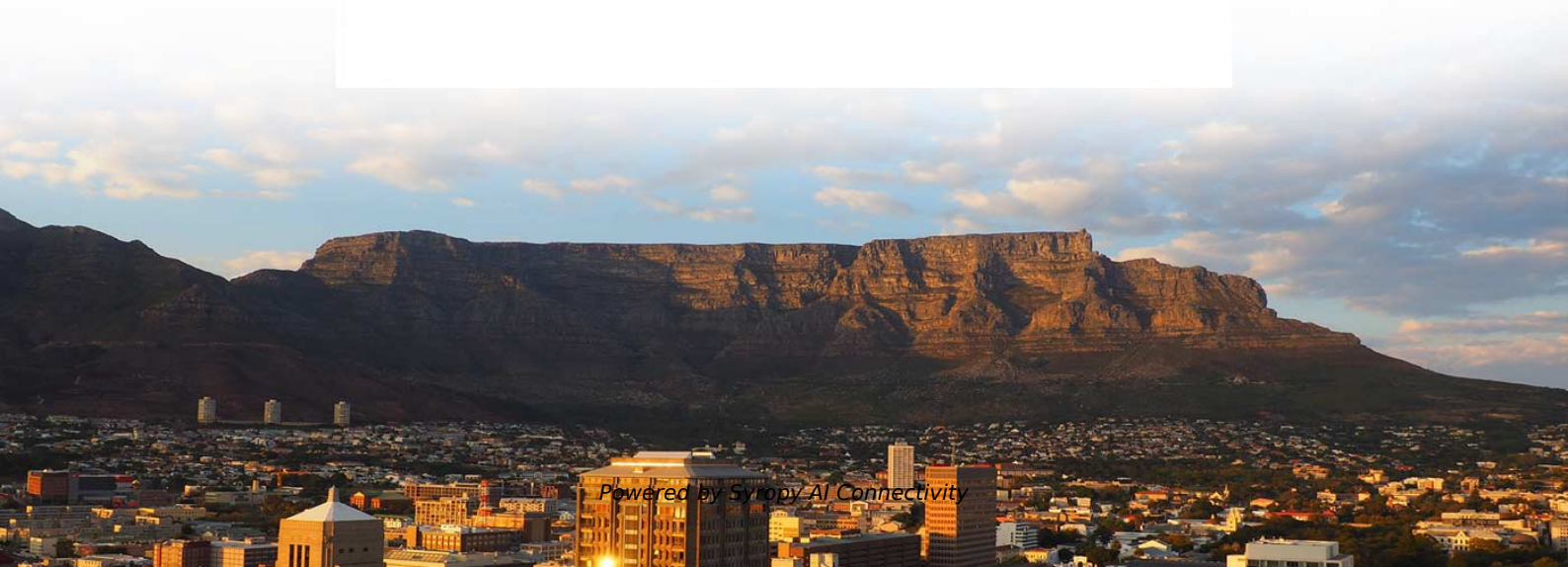




Syropy AI Connectivity

Low-loss selection guide for dual-port information panels in supercomputing centers





Low-loss selection guide for dual-port information panels in supercooled

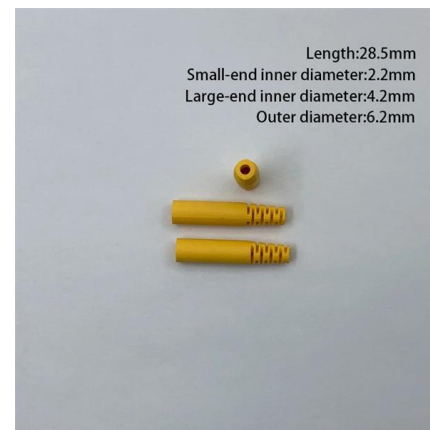


MAP-200-Based Insertion Loss/ Return Loss Testing Solution

It is an ideal lower-cost option for applications that do not require RL measurements. Its excellent source stability and launch monitoring minimizes reference frequency requirements. The mL-A2 uses the

Dual path features interaction network for efficient image super

We propose the Dual Path Features Interaction Network (DPFINet) for efficient image super-resolution (SR), which captures both global and local information at a low computational cost



AN10798 DisplayPort PCB layout guidelines

Right to make changes -- NXP Semiconductors reserves the right to make changes to information published in this document, including without limitation specifications and product descriptions, at

SYSTIMAX® ultra low-loss (ULL) solution guide , CommScope

Supporting them requires an end-to-end channel approach featuring higher bandwidth fiber and ultra low-loss modular connectivity solutions that enable you to meet lower loss budgets--now and in the



CENTERLINE 2500 Low Voltage Motor Control Centers and

CENTERLINE 2500 Low Voltage Motor Control Centers The Allen-Bradley® CENTERLINE® 2500 Motor Control Center (MCC) from Rockwell Automation® uses the latest technology in motor control

Electronic Components Distributor

Electronic Components Distributor - Mouser Electronics



A dual-path feature reuse multi-scale network for remote

In this paper, a novel dual-path feature reuse multi-scale network (DFMNet) is proposed to more effectively utilize multi-scale features in remote sensing images, enhancing the detailed



RTG4 Dual-Port Large SRAM Configuration



User Guide

A Dual-Port Large SRAM functions synchronously for memory write and read operations, setting up the addresses as well as writing and reading the data. Memory write and read operations are triggered at



Officetel-watcher/seen.json at main · siufuguv-hub/Officetel

Contribute to siufuguv-hub/Officetel-watcher development by creating an account on GitHub.

2.1.3.2.1 Dual-Port Large SRAM Configurator

The dual-port LSRAM configurator has three tabs: Parameter settings Port settings Memory initialization Parameter Settings The parameter settings include the optimization of LSRAM for High Speed or



SYSTIMAX® EHD ULL fiber panels solution guide

With concentrated port density and simplified design, our unique high-speed fiber panel system keeps your infrastructure scalable, manageable and agile. And, as part of our High Speed Migration



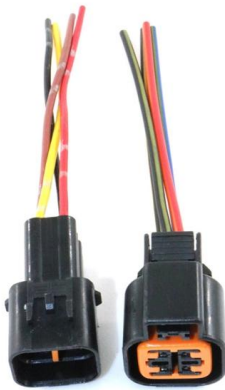
Home o SC25

The International Conference for High Performance Computing, Networking, Storage, and Analysis o 16-21 Nov 2025 o St. Louis, MO



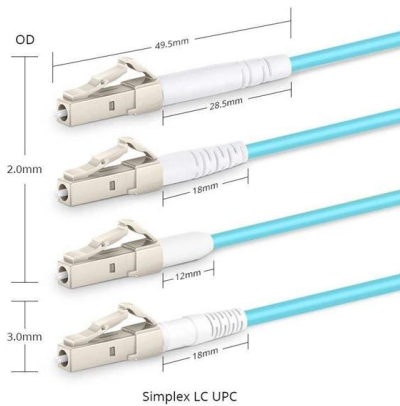
Power MOSFET Selection Guide

High Switching Frequencies Low Spiking Thermal Efficiency Low Leakage Specialist High Sides Improved Safe Operating Area Increasing switching frequency from 300KHz to 1MHz allows a 70 -



Panels

The panel proposal may include information such as a description of the panel topic or position statements by the panelists. You must convince the



Optical interconnection networks for high-performance systems

In order to be adopted in high-performance systems, optical switching technologies must demonstrate a path toward high-volume manufacture and ensure low cost per port.

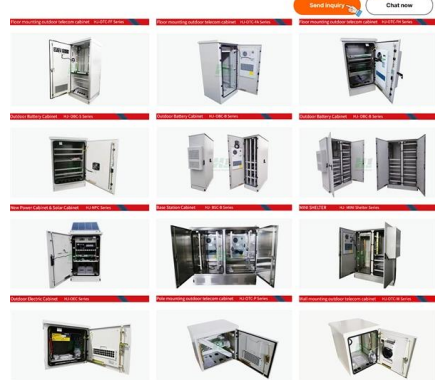


8592_BR_FiberSystemsSelectionGuide_R7 dd

This system selection guide gives you two ways to select the right system for your application.

Powerful manufacturers - 20+ years of experience - Support customization

For more product types, please contact customer service>>>

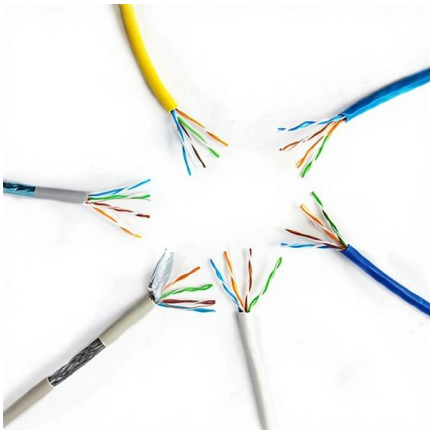
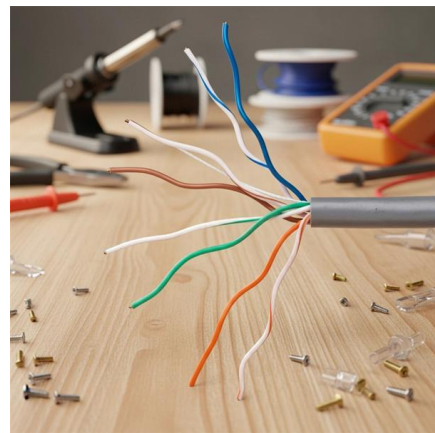


Supercomputing

A Diverse Community SC has built a diverse community of participants including researchers, scientists, application developers, computing center staff and management, computing industry staff, agency

Home o SC26

The International Conference for High Performance Computing, Networking, Storage, and Analysis o 15-20 Nov 2026 o Chicago, IL



RTG4 Dual-Port Large SRAM Configuration User Guide

This user guide describes how to configure a Dual-Port Large SRAM instance and how to define the way in which the signals are connected. For more details about the Dual-Port Large SRAM, see the

FatPaths: Routing in Supercomputers and



Data Centers when

Abstract--We introduce FatPaths: a simple, generic, and robust routing architecture that enables state-of-the-art low-diameter topologies such as Slim Fly to achieve unprecedented performance. FatPaths



Presentation

AI and Supercomputing Networks: Detailed Implementation Considerations for the New Challenges of Enhanced Ultra-low Latency Networks Jonathan Jew J& M Consultants, Inc jew@j-and-m Editor

Reference Manual Control Panels compliant with IEC Standards and

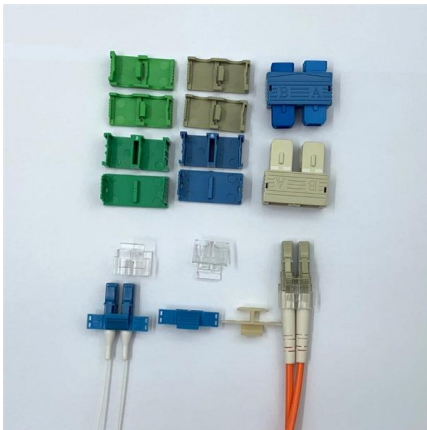
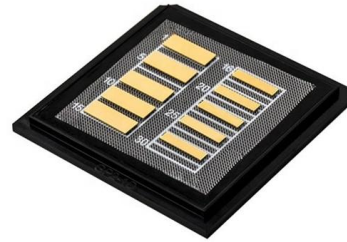
Further information about North American standards can be found in the Siemens guide "Industrial Control Panels and Electrical Equipment of Industrial Machinery for North America".



Full text of "NEW"

Full text of "NEW" See other formats Word . the, > < br to of and a : " in you that i it he is was for - with) on (? his as this ; be at but not have had from will are they -- ! all by if him one your

Find in-depth gaming news and hands-on reviews of the latest video games, video consoles, and accessories.



Panel Guides

This is our Panel Guide support pages. Please look through our links to find the panel guide that you are looking for.

Submission guidelines , The Journal of Supercomputing

The Journal of Supercomputing has discontinued the publication of author biographies and author photographs. Nowadays author biographies / author information is available on the internet by



Supercomputer Architecture

Supercomputing System Stack Device technologies Enabling technologies for logic, memory, & communication Circuit design Computer architecture semantics and structures Models of



High-Speed Interface Layout Guidelines (Rev. J)

Because longer via stubs resonate at lower frequencies and increase insertion loss, keep these stubs as short as possible. In most cases, the stub portion of the via present significantly more signal



High-Density Cabling Design Guide

Following the guidelines and best practices highlighted in this solution design guide will help provide you with the information required to successfully deploy a cabling infrastructure in your data center.

SYSTIMAX ULL fiber panels solution guide

The SYSTIMAX® iPatch® HD & UD fiber panels are a component of the imVision® automated infrastructure management (AIM) solution and provide intelligent connectivity to the data center.



2.1.3.2.1 Dual-Port Large SRAM Configurator

The PF_DPSRAM configurator automatically cascades LSRAM blocks to create wider and deeper memories by selecting the most efficient aspect ratio. It also handles the grounding of unused bits.



Contact Us

For datasheets, pricing, or custom high-speed optical interconnect solutions,
please visit:

<https://www.syropy.com.pl>