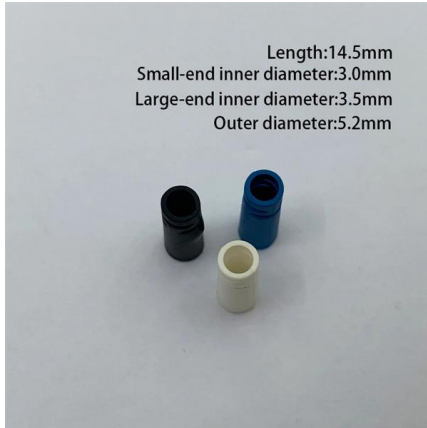


Low-loss and cost-effective data center interconnect OLT optical line terminals





Low-loss and cost-effective data center interconnect OLT optical lin

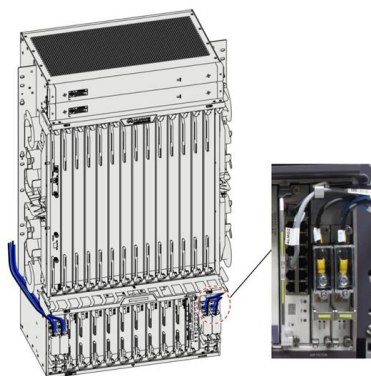


LPO vs NPO vs CPO: The Evolution of Optical Interconnects in AI

AICPLIGHT Posted on Apr 28 LPO vs NPO vs CPO: The Evolution of Optical Interconnects in AI Data Centers # lpo # npo # cpo As AI and supercomputing clusters evolve toward

How Optical Line Terminals (OLTs) Are Revolutionizing High-Speed

An Optical Line Terminal (OLT) is a high-capacity device that serves as the central hub of a Passive Optical Network (PON). Positioned in a service provider's data center or central office, the



OLT Deployment New Strategies for ISPs and Enterprises

As demand for fiber-optic broadband grows, service providers and businesses must optimize their OLT deployment strategies to ensure scalable, cost-effective, and high-performance

Understanding OLT, ONU, ONT and ODN in PON

OLT, ONU, ONT, and ODN are key components and acronyms used in Passive Optical Network (PON) architecture, which is a popular technology for



Data Center Network

So lution ns Data Center Optical Interconnection Solution This solution builds ultra-broadband, simplified, and intelligent DCI to meet customers' requirements for



OLT vs ONU vs ONT vs ODN: Fiber Optic Network

Learn differences between OLT, ONU, ONT, and ODN in fiber networks. Optimize your optical network knowledge.



Exploring the OLT (Optical Line Terminal)

Dive into the heart of fiber networks with our in-depth exploration of Optical Line Terminal (OLT). Uncover the crucial role it plays in revolutionizing high-speed data transmission and network



Sumitomo Electric Completes Delivery of Terrestrial

Sumitomo Electric Industries, Ltd. has improved the transmission loss of terrestrial optical fiber cables using PureAdvanceTM-110, a pure-silica-core,



H3C S7500X-G Series Optical Line Terminal (OLT)

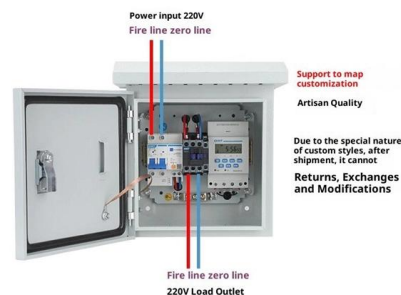
The S7500X-G OLT can achieve simultaneous Ethernet and PON access by adding standard GE/10GE/40G/100G Ethernet service modules, meeting users' hybrid networking needs.



Recent Advances of High-Speed Short-Reach Optical Interconnects

The ever-increasing demand for data centers and high-performance computing systems necessitate power-efficient, low-latency, and high-density interconnect design. This article reviews and analyzes

Product Wiring Diagram



Optical Interconnect Technology Analysis: LPO, NPO, CPO

Exploring optical interconnects for AI data centers: LPO for low-power, short-distance links, NPO for high-density, near-package connections,



OLTs (Optical Line Terminals) , GPON , Global , Zyxel

Zyxel's GPON OLTs offer advanced signal processing for dense deployments. Upgrade to gigabit symmetric services today and prepare for tomorrow's



What is an Optical Line Terminal? - OLT Working Principle

An Optical Line Terminal (OLT) consists of the following components - CPU, power supply, fan unit, service frame, and other uplink boards. Data is

Gigaopto --Professional Optical Transceiver Manufacturer

Hier sollte eine Beschreibung angezeigt werden, diese Seite lässt dies jedoch nicht zu.



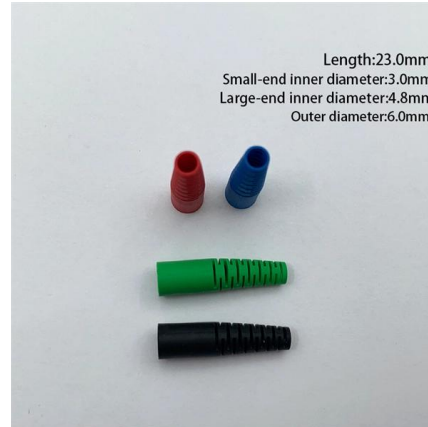
Understanding OLT, ONU, ONT and ODN: Building

ODNs are designed to minimize signal loss and ensure efficient distribution of data throughout the network. The integration of Optical Line Terminals (OLTs), Optical



How optical interconnect and optical processing are

Driven by the high-bandwidth, low-latency requirements of AI (as AI models are distributed across dozens of processing nodes), optical interconnect



What is OLT (Optical Line Terminal)? Types, Features

The full form of OLT is optical line terminal, which is a device used to connect the optical fiber and transfer signals. It's an important part of PON in FTTx.

LIDON: Loopback interconnect datacenter optical network

By using a controllable number of optical amplifiers, combined with optical components, LIDON can achieve as low power consumption as OPTUNS, which is much lower than that of the



A data center network featuring low latency and energy efficiency

In this paper, we introduce a novel optical interconnect for data center networks (DCNs) with low latency and high throughput. The hybrid architecture features MEMS OXCs for low cost. The low latency is





What are OLT, ONU, ONT and ODN in PON?

The OLT is typically located in a central office or data center and is responsible for managing and controlling the entire PON infrastructure. The OLT



What is OLT and Why is it Important in Fiber Networks

What is Optical Line Terminal (OLT)? An OLT is the main device in fiber networks, converting signals and managing data for fast, stable internet

Recent Advances of High-Speed Short-Reach Optical Interconnects

Abstract: The ever-increasing demand for data centers and high-performance computing systems necessitate power-efficient, low-latency, and high-density interconnect design.



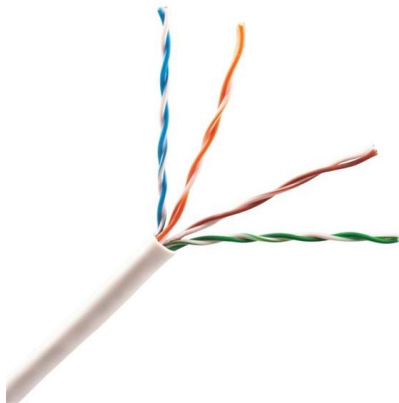
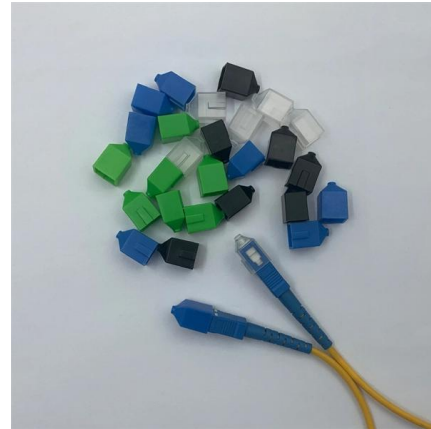
12.1 terabit/second data center interconnects using O

We compare potential configurations for increasing data center



ITPro Today, Network Computing, IoT World Today combine with

ITPro Today, Network Computing and IoT World Today have combined with TechTarget . The page you are looking for may no longer exist.

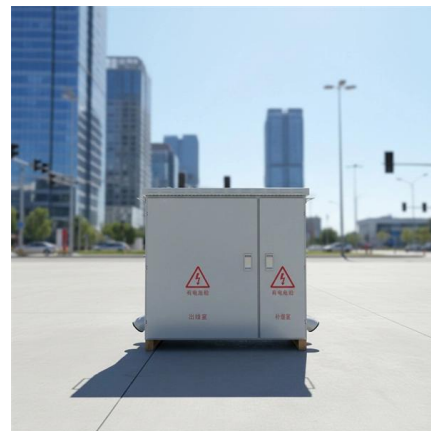


Data Center Interconnect

Data Center Interconnect using 400G-ZR optical modules and the OSFP-LS Arista dramatically simplifies Data Center Interconnect (DCI) using 400G-ZR optics and the OSFP-Line System (OSFP

OLT vs ONT - What's the Difference?

What is OLT (Optical Line Terminal) An OLT is a network device located at the service provider's central office. It serves as the control unit in a



Demystifying the Remote Optical Line Terminal

Demystifying the Remote Optical Line Terminal By Steve Harris and Adam Soccorsy Most broadband operators widely adopt fiber-to-the-home (FTTH) passive optical networks (PONs) by employing a



FS Community

Hier sollte eine Beschreibung angezeigt werden, diese Seite lässt dies jedoch nicht zu.



Grundkenntnisse über Optical Line Terminal (OLT)

Ein OLT (Optical Line Terminal), auch bekannt als Optical Line Termination, fungiert als Endpunkt-Hardwaregerät in einem passiven optischen Netzwerk. Das OLT enthält eine



Contact Us

For datasheets, pricing, or custom high-speed optical interconnect solutions, please visit:
<https://www.syropy.com.pl>