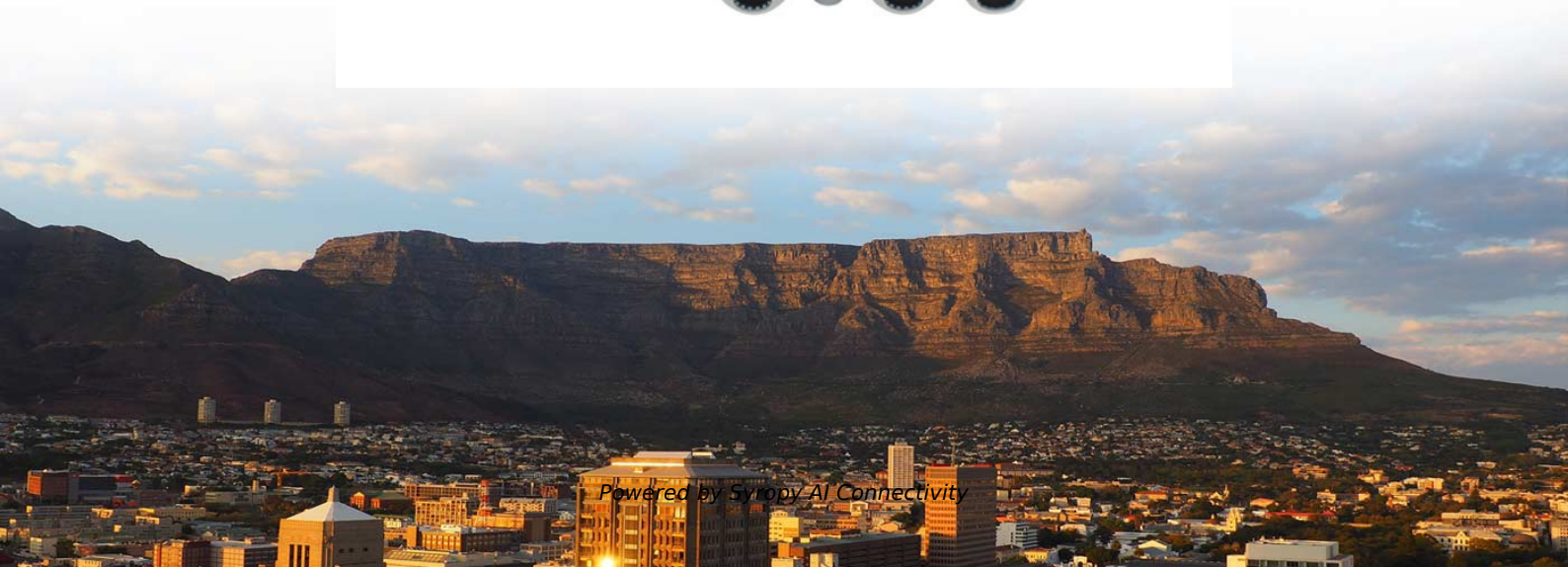
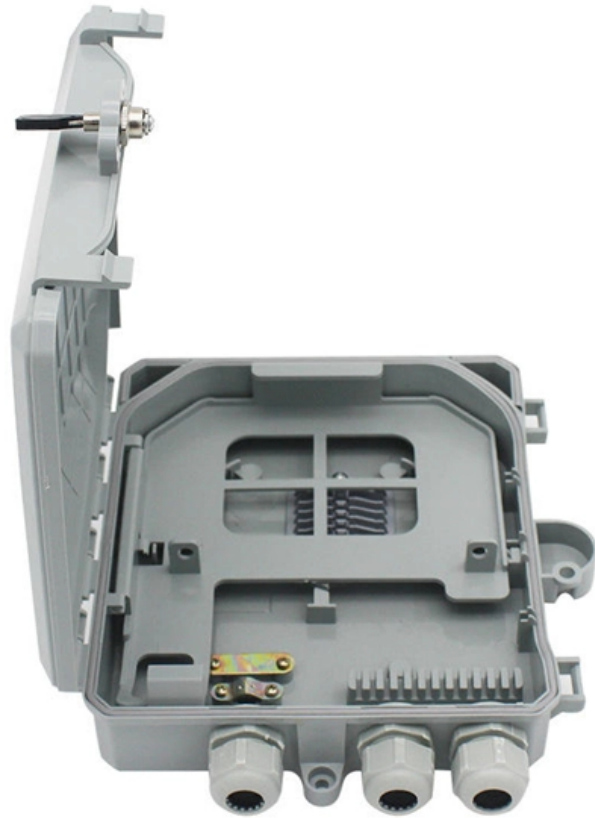


# **Low-loss Customization Process for Relay Protection CS Connectors**





## Overview

---

With optional additional lithography steps, we can achieve a more robust process required for eventual device scaling, highly reduced device footprint area, and the ability to form interconnects to. Consideration is given to availability and location of breakers, current sensing devices, and disconnect switches, as well as bus-switching scenarios, and their impact on the selection and application of bus protection. Abstract: Information on the concepts of protection of ac transmission lines is presented in this guide. Finally, skilled integration engineers can program communication processor functions such as the Real-Time Automation Controller (RTAC) from Schweitzer Engineering Laboratories (SEL) to integrate and concentrate information from a wide variety of microprocessor-based devices.



## Low-loss Customization Process for Relay Protection CS Connectors

---



### CONFIGURING MICROPROCESSOR-BASED RELAY SYSTEMS

In addition to customizing specific microprocessor-based relay capabilities, skilled integration engineers can also help utilities and industrial facilities design their microprocessor-based relay protection

### Relay-to-Relay Digital Logic Communication for Line Protection

INTRODUCTION Protection engineers, in concert with protective relay and communication product manufacturers, strive to achieve fast tripping for all transmission line faults through the use of



### Relay Scheme Design Using Microprocessor Relays

Prepared by working group C16 June 2014 This paper is intended to supplement to the existing 1999 relay trip circuit design paper to address the use microprocessor relays. The report will exclude ac



### Low frequency transformer based SOHO UPS design

All other components, including gate drivers, output voltage sensing and thermal protection circuitry as well as the relay, the AC input transformer, fuses and connectors, are located



on the top side of the



### MORE CASES PRESENTATIONS



### Principles and protection applications of low-impedance

The relay presented here is a high-speed low-impedance microprocessor-based current differential relay for power system busbars. The

### Slide 1

A number of bus protection schemes are presented; their adequacy, complexity, strengths, and limitations with respect to a variety of bus arrangements are discussed; specific application



### Coax Connectors for flexible Low Loss RF Cables

Connectors for flexible Low Loss RF Cables  
Telegärtner offers a wide range of RF connectors for various applications. They are used in mobile communication, industrial applications, test and



## IEC 61850 Engineering Guide

PCM600 Protection and Control IED Manager  
PCM600 offers all the necessary functionality to work throughout all stages of the protection relay's life cycle.



## Anderson Power

Hier sollte eine Beschreibung angezeigt werden, diese Seite lässt dies jedoch nicht zu.

## New Products, Videos, Tools & Latest Articles

Engineered for consistent performance, these connectors are ideal for structured cabling systems, industrial networking, and general data



## Low Loss RF cables and connectors from Telegärtner

Besides the wide range of RF connectors, Telegärtner also provides a considerable range of suitable coaxial low loss cables. Using this one-stop shopping option at



## IO-Link Handbook

IO-Link is a powerful technology that will play a pivotal role over time in factory process automation as well as other industries. It will not only save manufacturers billions every year but will expand new



## CONFIGURING MICROPROCESSOR-BASED RELAY SYSTEMS

Unfortunately, many owners fail to maximize the protection and value afforded by their new microprocessor-based relay systems. They may lack the time and/or skill to appropriately configure



## Best relay protection practices applied to shunt reactors

Connections & required protections This technical article explains the protection practices applied to shunt reactors and capacitors as well as to static



## Circuit Breaker Ratings - A Primer for Protection Engineer

Instrument transformers create well-recognized challenges for protective relays. Designed for the fundamental frequency component, instrument transformers may introduce transient errors.



### IEEE Guide for Protective Relay Applications to Transmission Lines

The purpose of this guide is to provide a reference for the selection of relay schemes and to assist less experienced protective relaying engineers in applying protection schemes to transmission lines.



### Relay-to-Relay Digital Logic Communication for Line Protection

The new, patented relay-to-relay logic communication technique repeatedly sends the status of eight programmable internal relay elements, encoded in a digital message, from one relay to the other



### Protection Relay Testing and Commissioning

ROUTINE FACTORY PRODUCTION TESTS These tests are done to show that protection relays are free from defects during manufacturing process. Testing will be done at several stages during



### CS CONNECT WITH CONFIDENCE

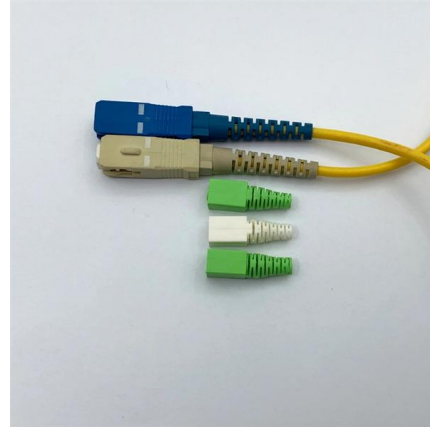
Patented Solutions d OSFP-MSA specifications. The CS® is currently standardized within TIA under TIA-604-19, and the SN® is in the process of standardization wit SENKO is the global leader in





## State-of-the-art in the industrial implementation of protective relay

The paper summarizes the operating principles of relay applications, the available measurements used by relays and the protection schemes for various faults that occur frequently in



## Connectors Design Guide\_2-17\_Vs1 dd

CONNECTOR BASICS Design engineers tasked with specifying interconnect components, including wire-to-wire, board-to-board and wire-to-board designs must understand the many types of



## Commissioning of Protective Relay Systems

One important complication of the technology shift is the increasing portion of the protection system design that resides in algorithms and logic in relays. Meanwhile, testing and



## Protective Relaying Philosophy and Design Guidelines

Protection systems are only one of several factors governing power system performance under specified operating and fault conditions. Accordingly, the design of such protection systems must be clearly



### **(PDF) Automatic Relay Protection Calibration Device**

The device can improve the efficiency of relay protection equipment inspection, reduce the technical threshold of operators, and reduce the probability



### **Product Guide REU615 Voltage Protection and Control**

1. Description The voltage protection and control relay REU615 is available in two standard configurations, denoted A and B. Configuration A is preadapted for voltage and frequency-based

### **Fiber Connectors - termination, plugs, assembly,**

Fiber connectors are connectors used as terminations of optical fiber cables. They are widely used in optical fiber communications and various other areas.



### **Review of Relay Processes and Design Optimization for Low**

Improved relay designs minimize parasitic electrostatic force issues and enhance functionality. The process flow is optimized to achieve the lowest switching voltages, while still ensuring reliable turn-off

### **A Comprehensive Evaluation Method for**



## Relay Protection Devices

Loss aversion exists typically in evaluations, where an equivalent loss produces greater psychological utility than a gain, making decision makers more focused



## SCHEMATIC REPRESENTATION OF POWER SYSTEM RELAYING

Working Group Assignment Report on common practices in the representation of protection and control relaying. The report will identify methodology behind these practices, present

## Contact Us

---

For datasheets, pricing, or custom high-speed optical interconnect solutions, please visit:  
<https://www.syropy.com.pl>