

# **Location diagram of the power distribution box at the booth**





## Location diagram of the power distribution box at the booth

---

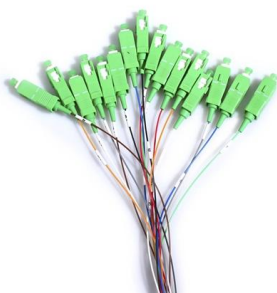


### ELECTRICAL SERVICES

Power will be installed in one location, typically on the floor somewhere along the back of the booth, as indicated in the following dia-grams: (We cannot guarantee that the outlet will be specifically located

### Power Distribution Boards: Understanding their role

Learn the anatomy and functions of a power distribution boards, stay safe working with it, and ensure reliability. Learn about their types and safe usage



### Understanding Distribution Boxes:A Comprehensive Guide

A distribution boxes is an essential device that manages the safe and efficient flow of electrical power throughout different areas of a building or facility.

### What Is The Internal Structure Of The Power Distribution

A distribution box is according to the electrical wiring requirements of the switchgear, measuring instruments, protection appliances, and auxiliary

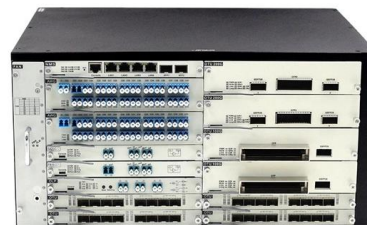


### Booth Electrical: How to Plan Power for Your Trade Show

One of the biggest challenges in booth electrical planning is deciding where power will enter the booth. Mark outlet locations directly on your floor plan

### A Step-by-Step Guide to Wiring an Electrical Panel Box

A Step-by-Step Guide to Wiring an Electrical Panel Box An electrical panel box, also known as a breaker box or a distribution board, is a crucial component of any



### What is the Internal Structure of The Distribution Box

What is a Distribution Box? Definition A distribution box is an essential electrical component used to manage and control the flow of electricity





## A Definitive Guide To Distribution Boxes

The distribution box acts as the center of power distribution, distributing electricity to all connected devices. A distribution box, also known as a distribution board, panel board, breaker



## Exhibit Booth Electrical

They provide the flexibility to position your equipment exactly where you want it, regardless of where your booth's power outlets are located.  
-Extra Printouts of

## A Guide to Temporary Electrical Installations for

Temporary electrical installations are systems designed to power exhibition booths, outdoor events, and temporary structures. As per their name,



## What is a Distribution Box? - A Comprehensive Guide

A distribution box organizes and controls power flow, ensuring safety and efficiency in electrical systems.

[electrical\\_services\\_grid\\_layout\\_usage\\_guide](#)



Electrical layouts are required whenever an outlet is needed at any other location within the booth except for the back wall. Exact measurements and/or comments that clearly indicate outlet locations



### Explore Power Distribution Box Types and Functions

Power distribution boxes are used in commercial and residential buildings and are part of the electrical system, also known as switchboards.

### How to confirm whether the installation location of the

The electrical distribution box plays a vital role in the power system. It is responsible for distributing electricity to various circuits and equipment.



### How Does a Power Distribution Box Work

Learn how a power distribution box works step-by-step--from incoming power to circuit protection and smart monitoring--for safe, efficient electricity delivery.



## Planning Your Electrical Needs

The main distribution point is the location of your main electrical drop, aka "the doghouse." If you are exhibiting in an in-line, the default location for a doghouse,



### What does a power distribution box do ?

The main function of the distribution box is to receive power and distribute it to various circuits. It can protect circuits, regulate voltage, and isolate and control

### Distribution Box Wiring Steps

?Location determination?: Determine the installation position of the circuit breaker according to the position of the circuit breaker installation hole on the box



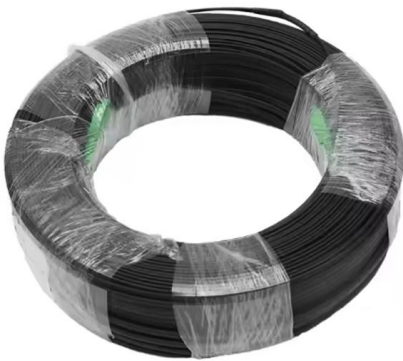
### Attachment 5, Explanation for Booth Water and Electricity Layout

The layout must clearly indicate the number, distribution, and intended location of the provided basic power sockets. If the layout is not submitted, the organizer will proceed with standard



## ELECTRICAL SERVICES

Location and load of all outlets. Please provide specific dimensions and wattages/amperages. Please do not simply place an X where power is required. Booth orientation. Please provide surrounding aisle

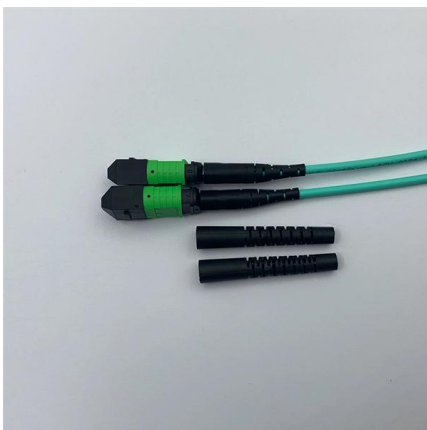


### Exhibit Electrical Strategies for Powering Your Booth

To help you avoid those headaches, we've put together a practical guide to ensure your exhibit booth electrical setup runs smoothly, efficiently, and without surprises.

### Planning Your Exhibit Booth Electrical Needs

To begin making an electrical diagram, you must first locate your main distribution point, located wherever your main electrical drop is. In-line exhibits will have their drop at the back of the



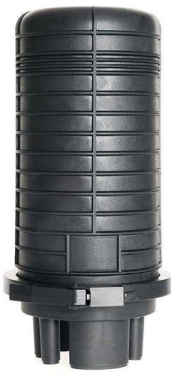
### Planning Your Exhibit Booth Electrical Needs

Composing your Electrical Diagram To begin making an electrical diagram, you must first locate your main distribution point, located wherever your main electrical drop is. In-line exhibits



## Planning Your Electrical Needs at a Trade Show

Identify the location and accessibility of electrical panels, available power capacities, and the proximity of outlets to your booth space. Understanding

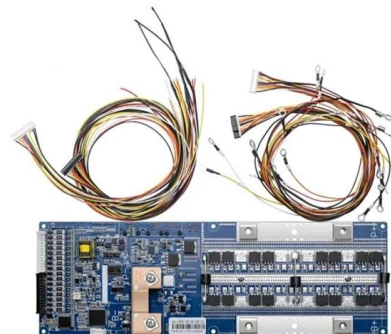


## The Complete Guide to Distribution Box: Installation, Types & More

Blog The Complete Guide to Distribution Box: Installation, Types & More By Admin Aug 2, 2025 No Comments # distribution box Introduction Electrical systems power our homes, offices, and

## Distribution Boards

Distribution boards, often referred to as electrical panels or breaker boxes, serve as the nerve center of any electrical system. Here we explore the crucial parts of a distribution board and gain insights into



## Distribution Boxes Explained: Types, Functions, and

Learn about distribution boxes, their types, functions, and safety features to ensure efficient and secure electrical power distribution in any building.



## Contact Us

---

For datasheets, pricing, or custom high-speed optical interconnect solutions, please visit:

<https://www.syropy.com.pl>