

# **Load Rating Table for Steel Cable Trays**

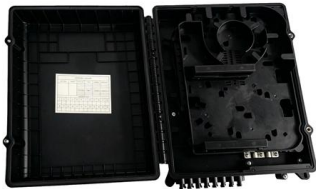




## Load Rating Table for Steel Cable Trays

---

### TECHNICAL AND SIZING DATA



By loading this tray more heavily, the designer must be careful not to exceed the total cable capacity as outlined in the Canadian Electrical Code (See following section on ladder tray sizing).

### LEGRAND CABLE TRAYS TECHNICAL GUIDE

Not all cable trays are equivalent. The mechanical and electrical characteristics, tests, certifications, overall quality management, recommendations mentioned in this technical guide only apply to our



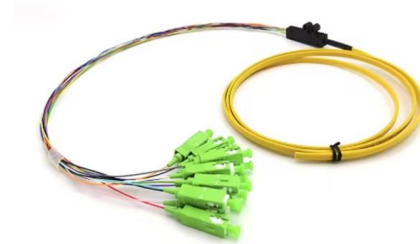
### B-Line series Cable Tray Design Considerations

Our wind certification report provides you with list of acceptable B-Line series cable tray supports, fittings and covers based off of the environmental conditions, cable loading, and type of cable tray in your



### Wyr-Grid® Overhead Cable Tray System

Limits on deflection from cable loading are set forth in EN 61537:2007. The safe working load (SWL) is the evenly distributed load at which the transverse deflection of the cable tray is less than 1/100th of



### **Enduro\_Specification\_Ladder Cable Tray\_04-30-21**

For International Standards, the manufacturer shall declare the tray system Safe Working Load (SWL) per the International Electrotechnical Commission (IEC) 61537 and publish in the form of a table or



### **26 05 36 Cable Trays for Electrical Systems**

Eaton B-Line series Engineer-approved equal METAL CABLE TRAYS Description: This product category covers metal cable trays and metal cable tray systems intended for field assembly and for



### **222 MANUFACTURING LTD**

HOW TO SELECT CABLE TRAY MATERIAL AND FINISH CODE Tray is offered in a variety of material types and finishes - aluminum, steel, stainless steel, paint ready. Refer to the material and finishes



## Tray and Ladder Sizing by Cable Capacity Calculator - IEC

Calculate tray and ladder sizes by cable capacity with our IEC-compliant calculator for efficient and accurate electrical installations.



### TECHNICAL AND SIZING DATA

Steel ladder tray has low thermal expansion (low coefficient) and provides electric shielding for low level control circuits when used in electromagnetic shielded ladder trays.

### NEMA Class Load Capacity Guide , PDF , Structural Engineering

The document provides a quick reference guide for various NEMA classes that specify load ratings and dimensions for cable tray systems. It includes NEMA classes 8A, 8B, 8C, 12A, 12B, 12C, 16A, 16B,



### Full cable tray systems specification document

B. Cable tray systems are defined to include, but are not limited to straight sections of [ladder type] [trough type] [solid bottom type] [channel type] cable trays, bends, tees, elbows, drop-outs, supports





## MECHANICAL PROPERTIES OF CABLE TRAY - Kiraç

Safe working load (SWL) is the maximum load which can be applied safely during normal cable management use. While testing, gradually increasing loads are



### Steel cable tray

Technical specifications Load ratings: 1.5 safety factor. All tray sections will support an additional 200 lb concentrated load on any portion of tray (side rail, rung, etc.) above and beyond published load class.



### NEMA Standard for Cable Tray: Complete Compliance Guide, Types,

Learn everything about nema standard for cable tray including classifications, load ratings, material types, and installation best practices. This guide helps engineers and contractors

#### Pre-Terminated Patch Panel

- Standard 19" width
- Max 144 fibers in 1U
- MPO/Fusion Dual-Purpose



Removable Cable Management Tray



Transparent Front Cover



High-Quality Matte Coated Steel

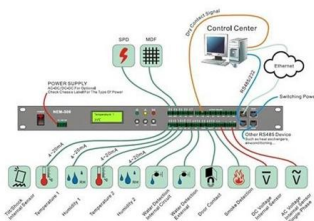
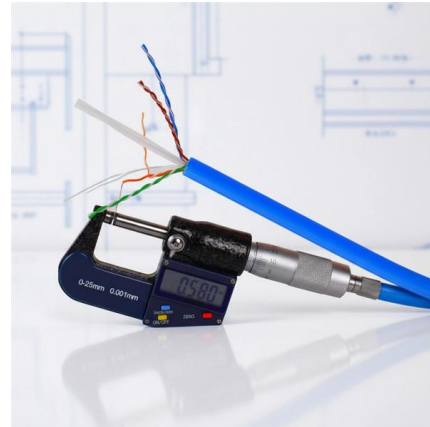
### GUIDE CABLE TRAYS TECHNICAL

Specifies requirements for metal cable trays and associated fittings designed for use in accordance with the rules of Canadian Electrical Code, Part I and the National Electrical Code®



## Cable Tray Load Calculation and Sizing: Your Easy Guide

Worried about cable tray capacity? Learn simple cable tray load calculation steps. This guide helps you pick the right tray every time, keeping

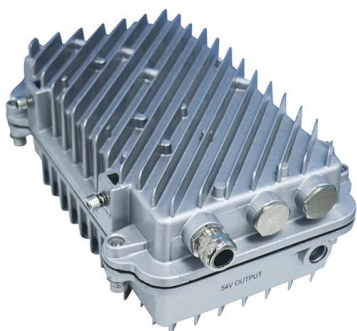


### Cope Ladder Master Spec

Cable Tray Hold Downs - Cable tray supported on standard 1-5/8 inch strut shall be held down with Cope style hold-down brackets. Such as the 9131 series for ladder type cable trays and 90XX series

### Cable Tray / Ladder / Aluminum NEMA Load Class: 20C+ CSA Load

TRAY GROUNDING CAPABILITY: Classified as an equipment grounding conductor per N.E.C. 392.7 with a maximum 1600 ampere rating. UL Cross Sectional area: 2.00 in<sup>2</sup> CONNECTORS: Supplied in



### CABLE TRAY SYSTEMS GUIDE

The design and cost of the cable tray is greatly affected by this designation. In order to determine the most appropriate and economical system, a class should be selected that reflects the actual total

### Cable Tray Raceway Fill and Load



## Calculations

The load ratings of the hardware that supports the cable tray must also be considered. Load ratings for some commonly used supports are shown in the tray



## B-Line series Cable Tray Design Considerations

Specifiers should be aware that some cable tray manufacturers do not account for this load reduction in their published cable tray load charts. Eaton's B-Line series wide cable trays use stronger rungs to



## Cable Tray Technical Guide A practical guide to product selection and

A practical guide to product selection and installation This guide for engineers and installers has been developed by ABB as a practical reference regarding cable tray characteristics, installation, and



## Technical information

Technical information CSA and NEMA loading classes The standard classes of cable trays, as related to their maximum design loads and to the associated design support spacing based on a simple beam



## B-Line series Cable Tray Design Considerations

Is your cable tray system optimized for safety, dependability, space and cost savings? Cable tray (or cable ladder) systems are a popular alternative to electrical conduit systems, as they have an



## Cable Ladder Cable Tray Weight Calculation Guide

Table of Contents Cable Tray Weight Calculation: The Basics The Cable Tray Weight Calculation is not a one-size-fits-all process. It can vary

## Snap Track Cable Tray Load Calculations

This document provides guidelines for determining load considerations when designing support systems for Snap Track cable tray systems. It discusses three



## Green Fiberglass Ladder Tray Very Light Fire Safety Frp Cable

Continuous Heavy Load or Long Spans: Its creep characteristic is more pronounced than metal's, making it unsuitable for very long spans (e.g., >4m) or sustained loads at its limit. Extremely Cost



## Contact Us

---

For datasheets, pricing, or custom high-speed optical interconnect solutions, please visit:

<https://www.syropy.com.pl>