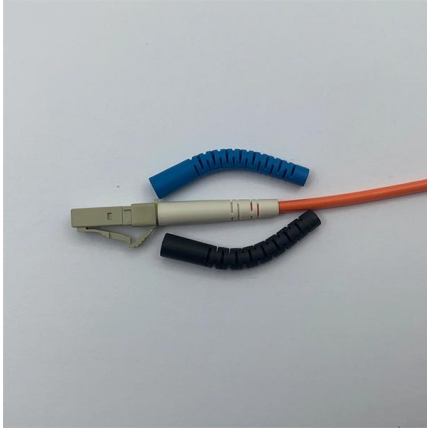


Lightly Managed Switch Broadband Aggregation





Lightly Managed Switch Broadband Aggregation



Is it possible to use a managed switch with link aggregation

The router supports link aggregation but the modem does not. Is it possible to plug a cat7 cable into a managed switch and then set the switch to link aggregate with the router to get the appropriate

Aggregation Switch: Increasing the Priority of Special Traffic

Networking Requirements Core switches set up a CSS that functions as the core of the entire campus network to implement high network reliability and forwarding of a large amount of data. In addition,



How To Set Up Switch Link Aggregation

I'm going to set up Link Aggregation between two gigabit switches: an 8 port Linksys SRW2008; and a 16 port Netgear GS716GT, shown in Figures 1 and 2 below. We



WAN Aggregation , A Smarter Take On Enterprise

Our broadband aggregation service leverages the power of WAN aggregation to consolidate your internet connections from various providers into a



Aggregation , TP-Link

Aggregation Series Switches Equipped with all-fiber ports, Aggregation Series Switches deliver up to 25 Gbps. With features such as Static Routing, DHCP Server, ACL, IGMP Snooping, STP, LAG, and



Everything You Need to Know About Aggregation Switch

Their aggregation switches are a set of managed, high-bandwidth switches that specialize in optimizing data transfer speeds and reducing network



What Is an Aggregation Switch and How to Choose?

An aggregation switch is a network device that consolidates traffic from multiple access switches, wireless access points, or other edge devices and forwards it to



What I want to do is set up: Link aggregation for all 4 ports of the modem/router to the managed switch, so that all computers on the network get maximum bandwidth to the internet Any



Stackable Aggregation Managed Switches

Provides 1G, 2.5G, and 10G speeds for flexible customization, ensuring optimal performance, compatibility, and scalability. Flexible interface options like copper,

bba_understanding.fm

Broadband access aggregation is the means by which connections are made among multiple technologies. These technologies include ISDN, DSL, cable, Ethernet, and wireless devices that are



Rockwell Automation Releases the Stratix 2500 Lightly Managed Switch

The Stratix 2500 lightly managed switch uses embedded Cisco technology and is part of the Rockwell Automation Integrated Architecture system. This helps to ease network configuration, management





Aggregation Network Switches , Grandstream Networks

Layer 3 aggregation switches that allow enterprises to build scalable, secure, high performance and smart business networks that are fully manageable and support

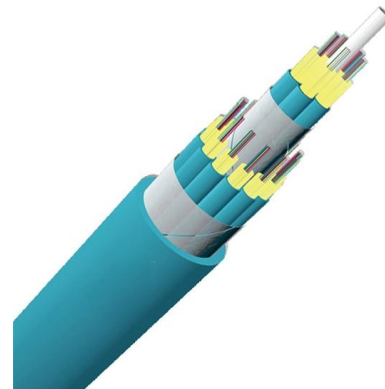


What Is Link Aggregation? Types & Key Benefits For

Learn how link aggregation can help enterprise businesses boost bandwidth and network reliability in this blog by TailWind.

What are Link Aggregation Groups (LAGs) and how do

All the physical links in a Link Aggregation Group (LAG) must operate in full-duplex mode at the same speed. You can use a LAG to directly connect



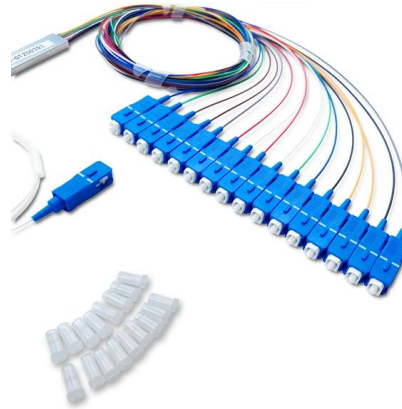
Aggregation Router

An 'Aggregation Router' is a device located in the services aggregation layer of a data center LAN that integrates important network services such as firewalls and server load balancers, allowing them to



Understanding Switch Management: Unmanaged vs. Lightly Managed Switches

As covered in this article, setting up or upgrading a network, and understanding switch management types is key to making the right choice. NETGEAR Business offers a wide range of



Ubiquiti USW-Aggregation UniFi 8-Port Layer 2

Ubiquiti USW-Aggregation Layer 2 10Gbps SFP+ 8 Port Gigabit Switch The Ubiquiti USW-Aggregation 8-Port Layer 2 Managed Rackmount 10-Gigabit SFP+ Switch

Everything You Need to Know About Aggregation Switch

Managed layer 2 switches bring several benefits to aggregation networks. They offer efficient traffic management functionalities, including packet



Link Aggregation Explained for Robust Networks

Link Aggregation combines multiple physical links into one logical connection for higher throughput and redundancy.



I believe you misunderstand a few things - chief of which is that on a consumer router you can't typically plug multiple network connections between the router and the a managed switch to

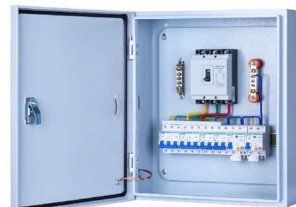


Link Aggregation: Static vs Dynamic, LACP, and MLAG

Understand how link aggregation (LACP, MLAG, static vs dynamic) improves bandwidth and redundancy. Learn configuration steps on Cisco and

Understanding Broadband Access Aggregation

Understanding Broadband Access Aggregation
Broadband access aggregation is the means by which connections are made among multiple technologies. These technologies include ISDN, DSL, cable,



Switch Features: Managed vs Unmanaged, Aggregation, Layer 2 vs

Learn the difference between managed and unmanaged switches, and how switch aggregation can enhance your network performance. We also cover the key distinctions between Layer 2 and Layer 3 switch



What are Link Aggregation Groups (LAGs) and how do

What are Link Aggregation Groups (LAGs) and how do they work with my managed switch? Link aggregation lets a switch treat multiple physical links



WAN Aggregation , A Smarter Take On Enterprise

Learn how WAN aggregation enhances bandwidth, reduces latency, increases scalability, and more to optimize enterprise networks in this blog. [Read](#)

Enhance Your Network with a Link Aggregation Switch:

Discover the benefits, configuration, and best practices of using a link aggregation switch to enhance your network. Combine multiple Ethernet links into



Stratix 2500 Lightly Managed Switch Addresses Evolving Networking Needs

This is where a lightly managed option like the Stratix 2500 switch delivers exceptional value." When installed out of the box, the Stratix 2500 industrial Ethernet switch can prioritize critical



What Is an Aggregation Switch and How to Choose?

Discover the role of aggregation switches. Explore differences between aggregation, access, and core switches, and choose the right model for your network.



LIGHTLY MANAGED SWITCH CLAIMS THE BEST OF BOTH WORLDS

Rockwell Automation reckons that its new lightly managed industrial Ethernet switch addresses evolving networking needs and closes gap between unmanaged and managed switches.



The differences between managed and unmanaged

Managed vs. unmanaged switches: What are the differences? Managed and unmanaged network switches differ in various ways, including



Aggregation Switches: LANCOM Systems GmbH

Every LANCOM aggregation switch was developed specifically with the aim of reducing operating costs (TCO): all ports are native and conform to industry



Contact Us

For datasheets, pricing, or custom high-speed optical interconnect solutions, please visit:

<https://www.syropy.com.pl>