

Lighting Distribution Box Set Quota





Lighting Distribution Box Set Quota



Phltd 400A Power Distribution Distro Equipment Box

PHLTD stage power distribution lighting box is the device that provides power supply and protection for various stage lighting equipment.

Set Lighting Technician's Handbook: Film Lighting Equip

The Set Lighting Technician's Handbook focuses on what is important when working troubleshooting, teamwork, set protocol, and safety. It describes



Lighting Distribution Box in the Real World: 5 Uses You'll

Lighting distribution boxes are essential components in electrical systems, serving as hubs that distribute power safely and efficiently across various applications. As infrastructure and building

Common use occasions of lighting distribution box

- 3. Indoor lighting distribution box (such as residential indoor distribution box, hotel room distribution box, etc.);
- 4. Lighting metering distribution box, generally can be set in combination with floor or functional



Set Lighting Technician's Handbook

The Set Lighting Technician's Handbook focuses on what is important when working on-set: trouble-shooting, teamwork, set protocol, and safety. It describes tricks and techniques for operating a vast



Global Lighting Distribution Box Market Global Trade Dynamics 2024

Our comprehensive market research report, conducted by STATS N DATA, aims to provide investors and organizations with a thorough understanding of the Global Lighting Distribution Box Industry



How to Choose the Right Size and Capacity for a Lighting Distribution

Selecting an incorrectly sized distribution box can lead to costly upgrades or safety risks. The right choice depends on a careful calculation of current and future electrical loads.

Lighting Distribution Box Market Report:



Trends, Forecast and

The global lighting distribution box market is expected to grow with a CAGR of 6.1% from 2025 to 2031. The major drivers for this market are the increase in construction activities, rising demand for smart

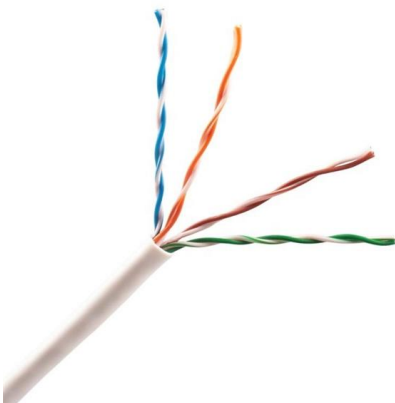


Top Features to Look for in a Professional Lighting Distro Box

Choosing the right lighting distribution box involves more than just picking the first available option. For professional event setups, features like circuit protection, scalability, easy setup,

Power Distribution Box

Electricity is the fundamental element and source to the lights. Stable and reliable distribution of power plays an important role in a successful lighting performance.



Lighting Distribution Box Charting Growth Trajectories: Analysis and

Discover the booming Lighting Distribution Box market! This comprehensive analysis reveals key trends, drivers, restraints, and regional insights for 2025-2033, featuring prominent



Lighting Distribution Box Market Value & Growth Outlook 2035

o Focus on developing modular and scalable distribution box designs that can easily adapt to varying installation environments and customer needs. This flexibility will cater to emerging

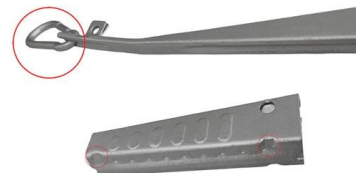


How to choose a distribution box of the right size for a project based

I learned this lesson the hard way early in my career when I undersized a distribution box for what seemed like a simple retail store setup. Fast forward six months when they wanted to add specialty

Distribution board

A distribution board (also known as panelboard, circuit breaker panel, breaker panel, circuit breaker, electric panel, fuse box or DB box) is a component of an electricity supply system that divides an



13U 18 Way 400A Stage Lighting Power Distro Box

Professional 13U stage lighting power distro box with 3-phase 400A camlock in/out, L5-20 and L14-50R outputs, Schneider 600A breaker, and shock-mount case. Ideal for events, AV, and touring setups.



Set Lighting Technician's Handbook: Film Lighting

A friendly, hands-on training manual and reference for lighting technicians in motion picture and television production, this handbook is the most



Lighting Power Distribution Box 108 Channels

Discover SX's reliable lighting power distribution box. Quality assured, factory-direct pricing, and customizable options for all your event needs.



What is the difference between lighting distribution box

When the total incoming line current of lighting distribution is greater than 63A, it is also classified as power distribution box. The power distribution circuit breaker



Lighting Distribution Box Market Report , Global Forecast From 2025

The demand for lighting distribution boxes is significantly influenced by the continuous growth in the construction sector. As both residential and commercial construction projects surge, the need for





Lighting Distribution Box

Q Can I request customization or OEM branding on power distribution boxes? Yes, factory custom Lighting Distribution Box services allow full OEM branding, tailored to fit your company's guide on



Lighting Distribution Box Market (2024-2034)

The Standard Lighting Distribution Boxes held the largest market share in 2024, accounting for approximately 55% of the global market. The growth of this segment is driven by the



Distribution boxes , Boels

Hire at Boels EX Distribution Box 400V 63A > 1x63A, 2x32A,1x16A, 6x230V/3p CEAG



Global Lighting Distribution Box Market Research Report 2025

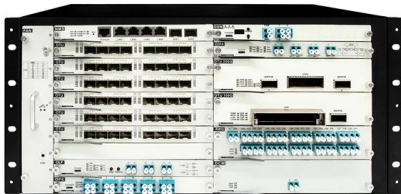
This report aims to provide a comprehensive presentation of the global market for Lighting Distribution Box, with both quantitative and qualitative analysis, to help readers develop business/growth





Lighting Distribution Box Market Size, Market Overview & Forecast

Access detailed insights on the Lighting Distribution Box Market, forecasted to rise from USD 1.2 billion in 2024 to USD 2.5 billion by 2033, at a CAGR of 8.9%. The report examines critical market trends,



Power & Distribution

Power & Distribution Power and Distribution (PD) is also referred to as 'Electrical Distribution', 'Set Power' or sometimes just simply 'Power'. PD consists of the the

Contact Us

For datasheets, pricing, or custom high-speed optical interconnect solutions, please visit:
<https://www.syropy.com.pl>