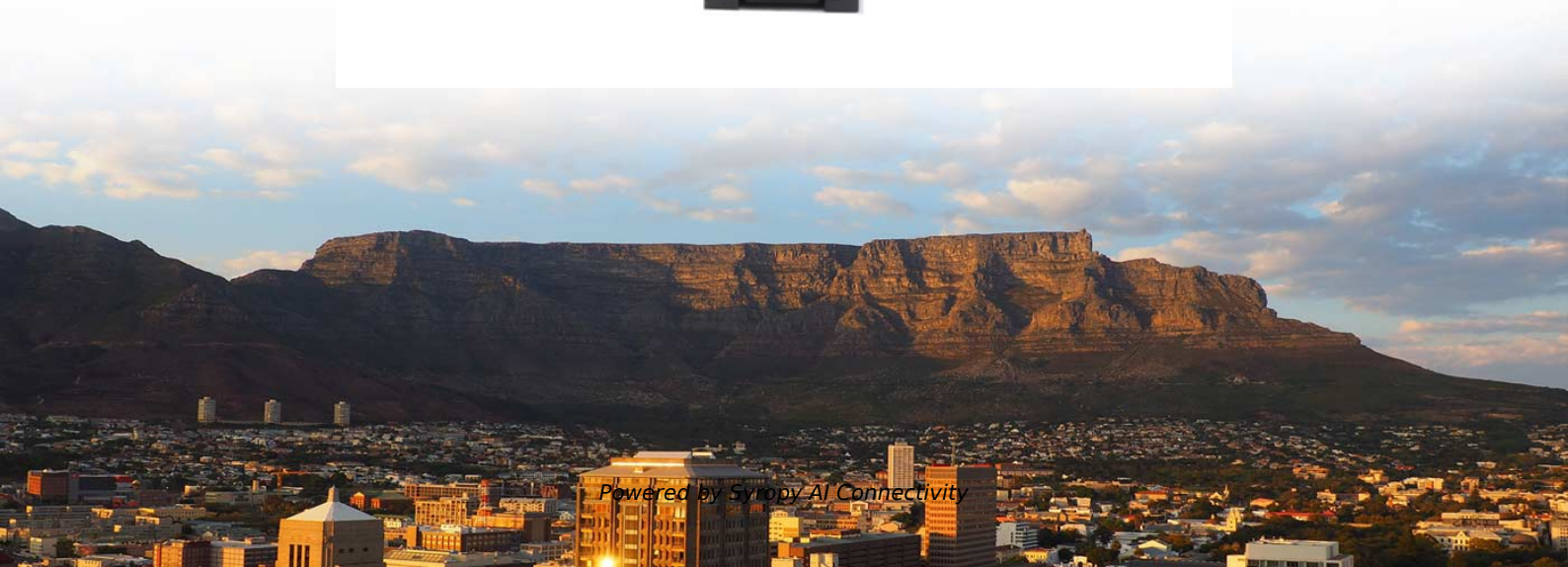




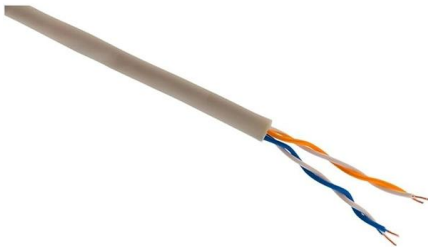
Syropy AI Connectivity

Lighting Distribution Box Interface Specification Table Diagram





Lighting Distribution Box Interface Specification Table Diagram



The Complete Guide to Understanding Lighting Control

A lighting control diagram is a visual representation of how various lighting fixtures are connected and controlled within a space. It provides a detailed overview of

Distribution Box: Types and Functions , Axis-Electricals

A distribution box ensures that electrical supply is distributed in the building, also known as a distribution board, panel board, breaker panel, or electric panel.



Product Catalog



Construction & Specification of SMDB, MDB, FDB LV

Such drawings show the proposed method of construction of the cubicles, method of supporting equipment and busbars, full details of busbar layout, method of

The ABC's of DALI

The purpose of this document is to provide a reference guide for architects, engineers, lighting designers and anyone seeking an understanding of the revolutionary Digital Addressable



Distribution Board Specifications , PDF , Electrical Connector

This document outlines the specifications for the supply of lighting and power distribution boards, including technical requirements and compliance with Indian standards. It details the construction,



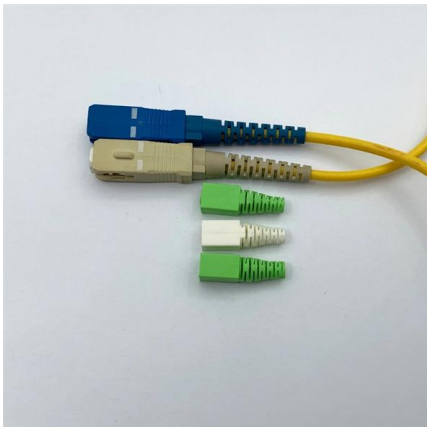
The Lighting Specification Process

The final component of the lighting specifications is the product data/matrix/catalog sheets. These provide a "visual" reference of the



Specifying with DALI

Table 3-2 showcases different scenarios where DALI lighting control can be applied effectively. While it is not a complete list, it provides insights into the diverse applications of DALI.





Intelligent panelboard for lighting control and energy

The manufacturer of the lighting control panelboard shall be regularly engaged in manufacture of electrical distribution equipment, lighting control and/or energy management equipment of types and



DMX Technical Guide For Lighting Controls

Lighting System Type: The light source is the basis for selecting all other components. The lighting system will be made with selected LED tape or fixtures. Multiple output channels may be available for

18 LIGHTING DISTRIBUTION BOARD.cdr

DATA SHEET FOR FLP LIGHTING DISTRIBUTION BOARD (LDB) TECHNICAL DATA: PRODUCT ENCLOSURE : CAT NO : MCDB / 186 & RCP / 215 : FLAME PROOF (Ex - d), G a s G r o u p I I



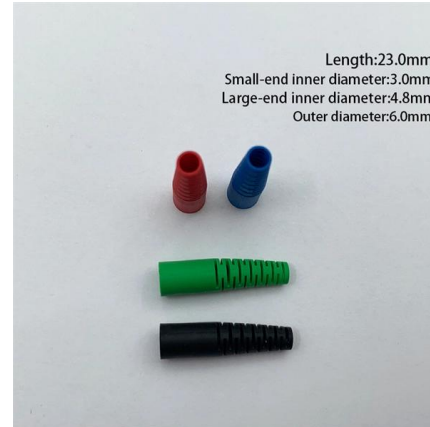
Digital Addressable Lighting Interface (DALI) control gear

Dimlevel[] is a look-up table (LUT) which converts DALI arc power level to its equivalent BCCU dim level LUT is automatically generated by DALICG02 APP when BCCU apps exist in project



Lighting design guide

Lighting design can also be achieved using published photometric data, such as that included on the product pages of this guide. Average illumination via the lumen method of calculation can provide

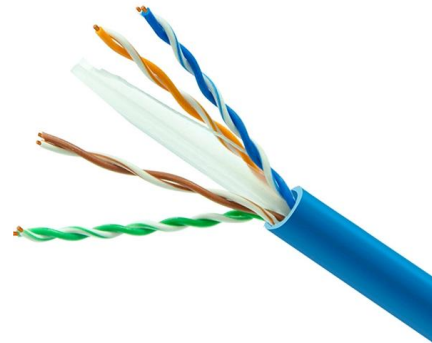


TECHNICAL CATALOGUE DATA

Many renowned manufacturers today provide relevant technical specifications for their luminaires online. These specifications, which are subject to permanent

LT Distribution Box Specifications , PDF

This document provides a summary of the key components of an LT distribution box suitable for 100KVA transformers. It includes 6 holes of 50mm diameter for cable



HCS_CX_Panels_CSI_Specs_with_Dimming_Section_260926

Where shown on the drawings, the contractor shall furnish and install a low-voltage lighting control system consisting of, but not limited to, panels with relays, 0 - 10vdc dimmers, graphic user

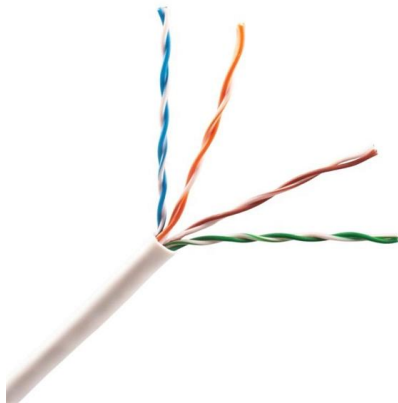


DISTRIBUTION BOARDS CATALOG

Table (1) ITEM DESCRIPTION Standard IEC61439-1& 3 Busbar Rating (AFW) 100, 250 No of Phase 3 Voltage Rating (V)-AC (50/60 Hz) 110-415 Mounting Type Flush No. of Ways (3 Phase) 6, 9, 12, 18,

LoRawan outdoor base station

- * Industrial Internet gateway
- * Compatible with LoRaWAN network,
- * ClassA/B/C mode
- * Support 8/16 channel
- * Supports PoE power
- * supply and backup battery power supply
- * 10KV lightning protection



Interconnect/distribution box design resources , TI

View the TI Interconnect/distribution box block diagram, product recommendations, reference designs and start designing.

GOVERNMENT OF INDIA

In the above context, the General Specification for Electrical Works (Internal) aims to lay down General guidelines to ensure safe, efficient, reliable, economical use of electricity.



From standard 1U to 6U sizes to fully customized Non-standard enclosures.

TECHNICAL SPECIFICATION I.R.O. 63,100,160 & 315 KVA

For temperature rise test, a distribution box with all assembly of Isolator / Porcelain cutouts shall be kept in an enclosure such that the temperature outside the box shall be maintained at 50 ° C.



Technical Specifications for Outdoor LT Distribution boxes with

Scope: The scope of this specification covers Weather / Vermin proof LT distribution boxes (LTD) with controllers, MCCB, MCB, Bus bars, Contactors, CT's, Energy Meter, LT gas filled fixed capacitor, DC



APPENDIX 9B Standard Drawings for Electrical Design

All interfaces with remote equipment should be clearly shown, using appropriate symbols, and clearly identified. See Figure B-7 for an electrical control diagram.

2013

ety. Homes, Offi ces, Industry, Schools, Hospitals, Transportation, Communication, Road Lighting, Markets all depend on reliable Electric Su ply. Life comes to a standstill without electri



1. Electrical Single Line Diagram Guidance

SINGLE LINE DIAGRAM (SLD) Or, ONE LINE DIAGRAM The single-line diagram is the blueprint for electrical system analysis. It is the first step in preparing a critical response plan, allowing you to



TECHNICAL SPECIFICATION FOR LT DISTRIBUTION BOX

General Technical Particulars for LT Distribution Boxes : - The L.T. Distribution Boxes should be of the dimensions as per the drawing & details in the table furnished.



31-SDMS-07C

31-SDMS-07C Rev.0 SPECIFICATIONS FOR LOW VOLTAGE DISTRIBUTION PANEL WITH ALUMINUM BUS BAR, MAIN CIRCUIT BREAKER AND 300A OUTGOING MCCBs. This document

Installation guide

Auxiliary/UL924 input is a programmable dry contact interface that is active low. A dry contact input is connected between the AUX/UL924 and GND terminals on the DyNet connector strip.



Contact Us

For datasheets, pricing, or custom high-speed optical interconnect solutions, please visit:
<https://www.syropy.com.pl>