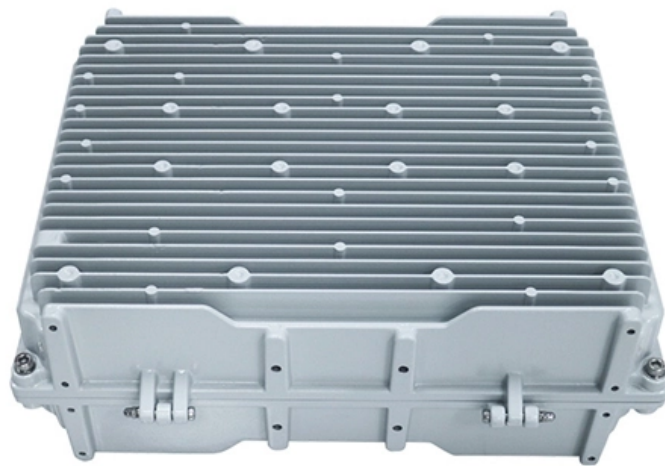


Light Sensor Programming Control Module





Overview

In this tutorial, you'll learn how to interface Arduino with LDR Sensor (Light Sensor) and use it to detect darkness & light. We'll create a couple of Arduino LDR code example projects to practice what we'll learn in this tutorial. Without further ado, let's jump right into it! In this tutorial, we are going to learn: Or you can buy the following kits: Disclosure: Some links in this section are Amazon affiliate links. If you make a purchase through these links, we may earn a commission at no extra cost to you. This Arduino Light sensor circuit is a simple example that shows you how to connect light sensors such as photoresistors, photodiodes, and phototransistors, to an Arduino. LDRs are widely used in a variety of applications, including power saving systems, smart escalators, smart.



Light Sensor Programming Control Module



Arduino light sensor: A beginner's tutorial on DIY light

Arduino light sensor. A beginners project on using a light sensor with an Arduino Uno Introduction In this beginner-friendly Arduino light sensor project, you will learn

Light Magic: Using LM393 and Arduino UNO

Automatic light control using a photosensitive LDR sensor module and Arduino. Find this and other hardware projects on Hackster.io.



How to use LDR Sensor Module with Arduino

It is widely used in various applications such as automatic lighting systems, security devices, and environmental monitoring. The LDR Sensor



LDR Module

Learn how a LDR light sensor module works, how to connect the LDR light sensor module to ESP32, how to program ESP32 to detect the light. The detail



Light Sensor: A Simple Arduino Tutorial - Easyelecmodule

Additionally, a light bulb with motion sensor--a common smart home device that combines light-sensing and motion-detection functions--also relies on



Sensor Kit

Plug in the Grove Light Sensor module to the Analog Pin marked A3 on your Grove Base Shield. Attach the Shield to your Arduino UNO R3 / R4 and connect it to



Light Sensor LED Brightness Control System With

Light Sensor LED Brightness Control System With ATMEGA328 UNO V3.0 R3 for Arduino: ICStation team introduce you this light sensor LED brightness control



How to detect light using an Arduino

When using a light sensor module, refer to its datasheet or documentation to understand its pinout and operating characteristics. How are



How to Use Light Sensors With Arduino

How to Use Light Sensors With Arduino - Lesson #10 Build a light-sensing LED with Arduino and learn how photoresistors work in your projects.

Arduino Light Sensor - Circuit and Code Example

This is a quickstart guide to the Arduino light sensor circuit. You'll learn how to connect the circuit on a breadboard and the needed code.



What is a Light Sensor? Types, Uses, Arduino Guide

A light sensor is a photoelectric device that converts light energy (photons) detected to electrical energy (electrons). Seems simple? There is more



Raspberry Pi Light Sensor using an LDR

This Raspberry Pi light sensor tutorial takes you through all the steps to get the LDR sensor setup correctly so you can use it in a project.

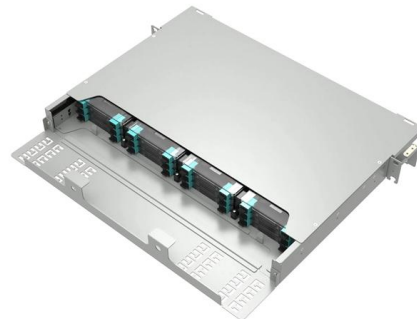


15 Best Arduino Light Sensor Modules That Will

The top 15 Arduino light sensor modules that will brighten your projects, offering accuracy and ease of use, are waiting to be explored in detail.

Arduino Light Sensors

Arduino Light Sensors Introduction Light sensors are essential components in many electronic projects that need to detect or respond to light levels. They convert



Arduino Interfacing with LDR Sensor: Guide and Code

Connect an LDR sensor to your Arduino! Step-by-step guide with wiring diagram and example code for light-sensitive projects.



Light Sensor

Learn: how light sensor works, how to connect light sensor to ESP32, how to code for light sensor, how to program ESP32 step by step. The detail instruction, code,

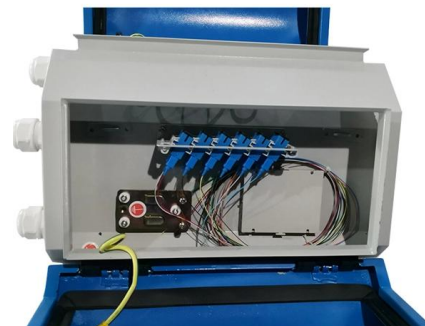


Smart Lighting Control & Automation for Every Room

Discover Control4 smart lighting solutions that enhance wellness, security, and ambiance. Automate scenes, control brightness and color, and create the perfect

Arduino LDR Sensor (Light Sensor) Interfacing

In this tutorial, you'll learn how to interface Arduino with LDR Sensor (Light Sensor) and use it to detect darkness & light. We'll create a couple of Arduino LDR code



Automatic Light Control System Using LDR and Arduino

Build an automatic light control system using an Arduino and LDR (Light Dependent Resistor). This project demonstrates how to create a light



Arduino DIY LED Control with LDR Sensor (Photoresistor)

Arduino DIY LED Control with LDR Sensor (Photoresistor) This example demonstrates how to use an LDR (Light Dependent Resistor) darkness



WebiTelecomms Cabling

Arduino Interfacing with LDR Sensor: Guide and Code

Learn how to connect and use an LDR sensor with an Arduino board for light detection applications. Includes wiring diagram and Arduino code.

Arduino Nano ESP32

Learn how a LDR light sensor module works, how to connect the LDR light sensor module to ESP32, how to program Arduino Nano ESP32 to detect the light. The



Arduino DIY LED Control with LDR Sensor (Photoresistor)

Arduino Introduction In this project I am going to demonstrate how to Control LED through LDR. This project will involve using a little a bit of code and



What is a Lighting Control Module? Essential Guide Inside!

Discover how lighting control modules are revolutionizing the smart lighting industry, offering enhanced efficiency and customization. Learn how



Arduino

Learn how a LDR light sensor module works, how to connect the LDR light sensor module to Arduino, how to program Arduino to detect the light. The detail

LED Control

Introduction ¶ The LED control (LEDC) peripheral is primarily designed to control the intensity of LEDs, although it can also be used to generate PWM signals for other



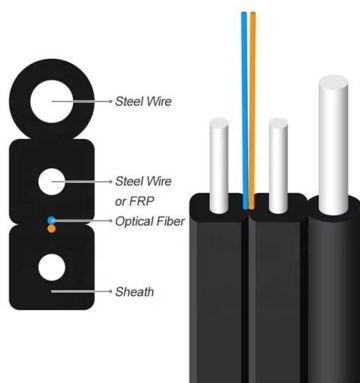
Master LED control system programming

Case study: A smart home lighting system with advanced LED control Consider a smart home system controlling 256 RGB LEDs across multiple rooms. An ESP32 microcontroller with Wi-Fi enables



Arduino Light Sensor - Circuit and Code Example

This Arduino Light sensor circuit is a simple example that shows you how to connect light sensors such as photoresistors, photodiodes, and



Light Sensor Triggers LED - Arduino Tutorial

Introduction Interfacing a Light-dependent resistor (LDR) with an Arduino microcontroller to control an LED based on the ambient light level is a simple yet powerful way to create projects that

Interfacing TSL2591 Ambient Light Level Sensor with

This Arduino tutorial shows how to interface the TSL2591 sensor with Arduino board where light intensity is printed on LCD and Serial Monitor.



Contact Us

For datasheets, pricing, or custom high-speed optical interconnect solutions, please visit:
<https://www.syropy.com.pl>