

Liechtenstein Consulting Access Switch QSFP





Liechtenstein Consulting Access Switch QSFP



QSFP and QSFP+ Interconnect Solutions

QSFP and QSFP+ Interconnect Solutions A Quad Small Form-factor Pluggable (QSFP+) solution designed for high-density applications Molex's quad small form-factor pluggable (QSFP+)

QSFP+ Port Operations and Switch Fabric Mode

QSFP+ Ports Operations and Switch Fabric Mode This chapter describes the application-specific integrated circuit (ASIC) mapping and configuration of quad small form-factor pluggable plus

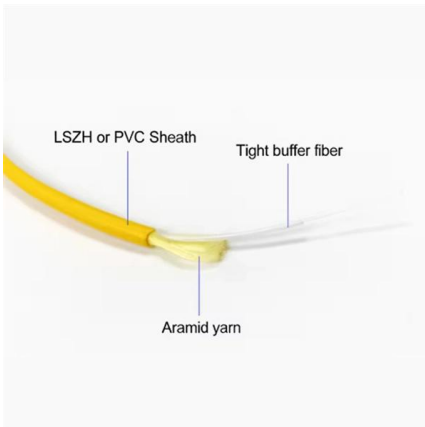


SFP vs QSFP+ vs OSFP: the Differences and Upgrade

Explore the differences between SFP, QSFP+, and OSFP transceiver modules. Learn when to upgrade your networking infrastructure for optimal

SwitchX 36 Port QSFP Ethernet Switch Installation Guide

SwitchX 36 Port QSFP Ethernet Switch Installation Guide P/N:MSX1035B-1BRR, MSX1035B-1SFR, MSX1036B-1BRR, MSX1036B-1SFR

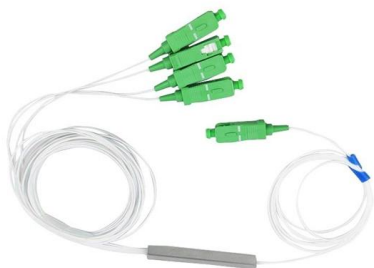


QNAP Upgrades 100GbE Switch QSW-M7308R-4X! Adds support for

Taipei, Taiwan, March 13, 2025- QNAP® Systems, Inc., a leading computing, networking, and storage solutions innovator, has enhanced its 100GbE Lite-L3 managed switch, QSW-M7308R-4X. The

2025 SFP vs QSFP Port on Switches: Key Differences, Benefits, Cases

Discover the differences between SFP and QSFP port on switch. Learn about speed, bandwidth, transmission distance to choose for your enterprise or data center.



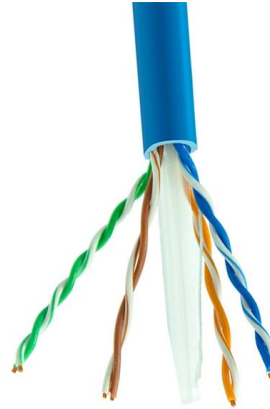
S8550-6Q2C, 8-Port Ethernet L3 Switch mit halber

Der S8550-6Q2C ist ein Hochbandbreiten-Switch für Campus-Kern- und



Factsheet Open Access Fibre Rollout Liechtenstein

Liechtenstein is internationally unique -probably the only country where vertical separation via a passive open access network truly works and has created an exceptionally competitive market (>10

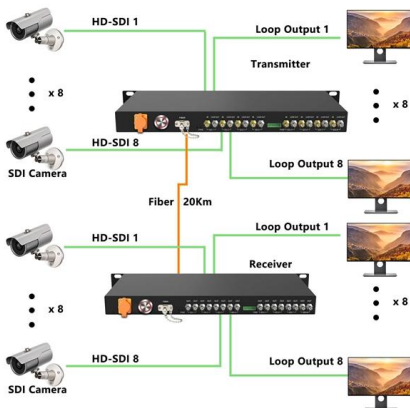


Felder Sprenger + Partner

FELDER SPRENGER + PARTNER is a fully licensed trust company in Liechtenstein. How can we help you?

Using a 40GbE (QSFP+) NIC with a 10GbE Switch (SFP+)

One question we get in our inbox regularly is how can you use a 40GbE (QSFP+) NIC with a 10GbE (SFP+) switch. Followers of STH will notice we stopped purchasing 10GbE (SFP+)



What is QSFP & QSFP28 Port? Everything You Need to

What is QSFP Port? Like an SFP port, a QSFP port is a physical cage and connector in a high-speed networking device that accepts only a QSFP form



IT Solutions and Services in Liechtenstein , IT Consulting Firm

Highly specialized industries benefit from IT Consulting and Services in Liechtenstein that align advanced technology strategies with niche financial and industrial needs.



QSFP-Switches verstehen: Ein umfassender Leitfaden

Entdecken Sie mit diesem umfassenden Leitfaden die neuesten QSFP-Switches für moderne Netzwerklösungen. Erfahren Sie mehr über

SFP vs QSFP: Key Differences and How to Choose for

SFP is still common in 1G/10G/25G access networks, while QSFP dominates 40G/100G/200G/400G backbone and AI/HPC clusters. This article breaks down



QFX10002 Port Panels

The port panel of the QFX10002-72Q consists of 72 quad small-form factor pluggable plus (QSFP+) ports that support 10-Gbps, 40-Gbps and 100-Gbps port speeds. Of these 72 ports, 24 ports accept



QFX10002 Switch Hardware Guide

Determining Transceiver Support for the QFX10002 The QFX10002 has quad small form-factor pluggable plus (QSFP+) ports for use as uplinks, downlinks, or as access ports. These 40-Gigabit



Understanding QSFP+ and its applications in your

Understanding QSFP+ and its applications in your network QSFP+ is a type of pluggable transceiver used to connect a network device to a copper or

S7600-24X2Q, Layer 3+ 24-port 10GbE Managed

Experience the QSFPTEK S7600-24X2Q, a Layer 3+ aggregation switch. Each QSFP+ port splits into 4x 10G, providing adaptable 10G and 40G fiber links. Ideal



SFP vs SFP+ vs QSFP28 vs QSFP-DD: 2026 Optical

SFP vs SFP+ vs QSFP28 vs QSFP-DD: Master optical transceiver selection for 1G to 800G AI networks with our lab-verified guide.



Tax Consulting , FS+P

TAX CONSULTING FS+P is one of the leading tax consultancies in Liechtenstein. Dr. Marco Felder was formerly the Director of the Fiscal Authority of the Principality of Liechtenstein, in which function he

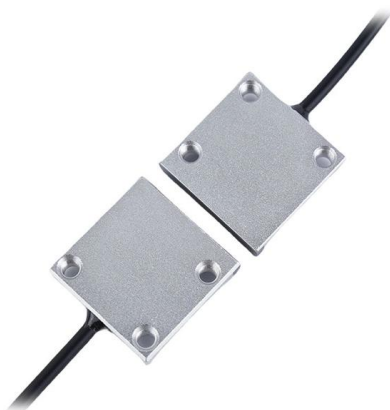
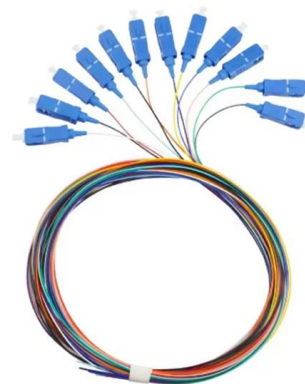


The Ultimate Guide to QSFP Cables

Explore the ultimate guide to QSFP cables. Learn QSFP types, differences from SFP, installation methods, and benefits for high-speed data

QSFP28 Compatible Switches: Complete Guide by Vendor

QSFP28 compatible switches explained: Cisco, Arista, Juniper, and NVIDIA platforms. Learn breakout support, FEC settings, and compatibility verification.



QSFP functionality & compatibility

Are there any limitations or do the lanes behave like any traditional switch port? Would an adapter like QSFP-SFPP-ADPT be better for connecting 10 Gb devices and forming LAGs? At least



HPE Switch QSFP+ and QSFP28 Modules , Product Support

HPE Switch QSFP+ and QSFP28 Modules: Access product support documents and manuals, software, download drivers by operating environment, and view product support videos.



QSFP+ verstehen und seine Anwendungen in Ihrem Netzwerk

QSFP+, das 2012 auf den Markt kam, war eine Weiterentwicklung der ursprünglichen QSFP-Transceiver, die 2006 auf den Markt kamen, und kann eine höhere Datenübertragungsrate

QFX10002 Fixed Ethernet Switches

All switches support quad small form-factor pluggable plus transceiver (QSFP+) and QSFP28 ports for 40GbE and 100GbE speeds, respectively.



Ethernet Network Data Switches

S7300-48TE4X2Q, 48-Port Multi-Gigabit Ethernet L3 Switch, 48x 100M/1000M/2.5GBASE-T RJ45 Ports, with 4x 10G SFP+ and 2x 40G QSFP+ Uplinks, Support Stacking, BGP



**Beratung und Consulting ,
Wirtschaftskammer Liechtenstein**

Rechnungswesen, Lohnbuchhaltung,
Unternehmensberatung, Compliance, Steuern
Bonatera Beratungs-Anstalt Beratung und
Consulting Finanzdienstleistungen Auring 52
9490 Vaduz



QSFP+ Port Operations and Switch Fabric Mode

QSFP+ ports can operate as either 40 Gigabit Ethernet or 4x10 Gigabit Ethernet modes on the Cisco Nexus 6004 switch. The default mode is 40 Gigabit Ethernet for the fixed QSFP+ ports and QSFP+

Contact Us

For datasheets, pricing, or custom high-speed optical interconnect solutions,
please visit:
<https://www.syropy.com.pl>